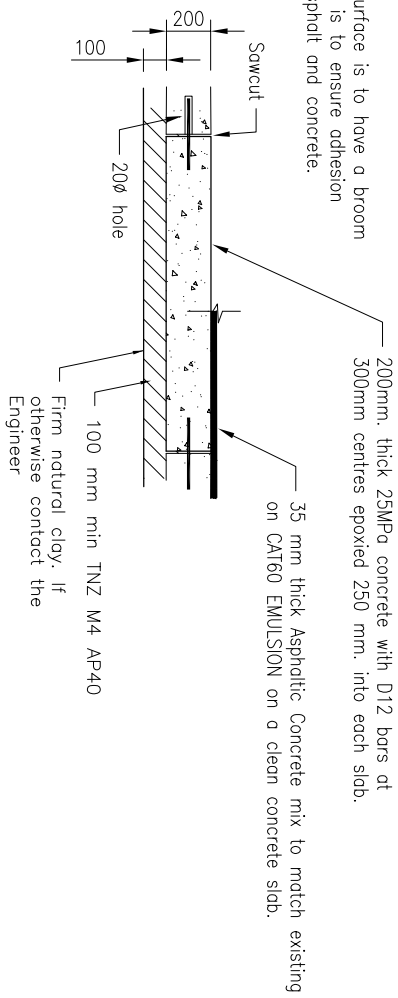


Concrete surface is to have a broom finish. This is to ensure adhesion between asphalt and concrete.



CONCRETE PAVEMENT REPAIR

1. These drawings illustrate the minimum requirements of Council. The contractor may elect to use superior alternatives with the approval of the Engineer.
2. Reinforcement bars are to be D12 (300MPa) and 500mm long. Set into a 20mm diameter drill hole with Epoxcrete UA or alternative.
3. Existing concrete is to be clean and free of any debris, dirt and loose material. The concrete edge has to be vertical to prevent breaking and crocking at the lower face.
4. Where full depth repairs are required the subgrade CBR is to be tested and pavement depth design approved by the Engineer. All repairs to be finished flush with the existing road surface.
5. If the edge of the repair is within 1 metre of a construction joint, a crack or the edge of existing pavement, then the existing pavement within this zone is to be replaced as part of the repair reinstatement.

Prepared By:



CONCRETE PAVEMENT REPAIRS

SCALE: _____ NTS

DRAWN: _____ H RASSOL

ISSUE DATE: _____ 11/2008

APPROVED: _____

PLAN No. _____ 2008/0110 Issue A