



Plan your new journey

Write down the details of your new bus journey and keep it with you.

From (start):

To (destination):

On: Weekday / Sat / Sun (circle one)
 DATE

To: arrive before / depart after (circle one)
 AM/PM

Fare with AT HOP card:

 Fare without AT HOP card:

Walk to (bus stop or station):

Take @ time:

Transfer required? Yes / No

Transfer @

Take @ time:

2nd transfer required? Yes / No

Transfer @

Take @ time:

Get off at:

Walk to:

Estimated arrival time:

Cut out and keep with you

Catch the bus? You need to read this.



Big changes to bus services in South Auckland, Pukekohe and Waiuku from Sunday 30 October 2016



October 2016

Introducing the Southern New Network Get Ready. Set. Go...

The biggest ever change to Auckland's bus and train network kicks off on Sunday 30 October 2016.

It's a simpler, more integrated network that will completely change the way people travel.

New bus routes, bus timetables and bus companies, better customer information and a new bus-train interchange at Otahuhu Station are all ready to go. But that's not all.

Expect more buses, more often, across South Auckland and new bus services for Pukekohe and Waiuku. Three new Frequent routes that will run every 15 minutes between 7am and 7pm, 7 days a week, including one along Great South Rd between Otahuhu and Papakura. Plus a bus to the airport which runs till midnight.

Our new trains are already moving thousands of people and helping to ease congestion. Having local buses

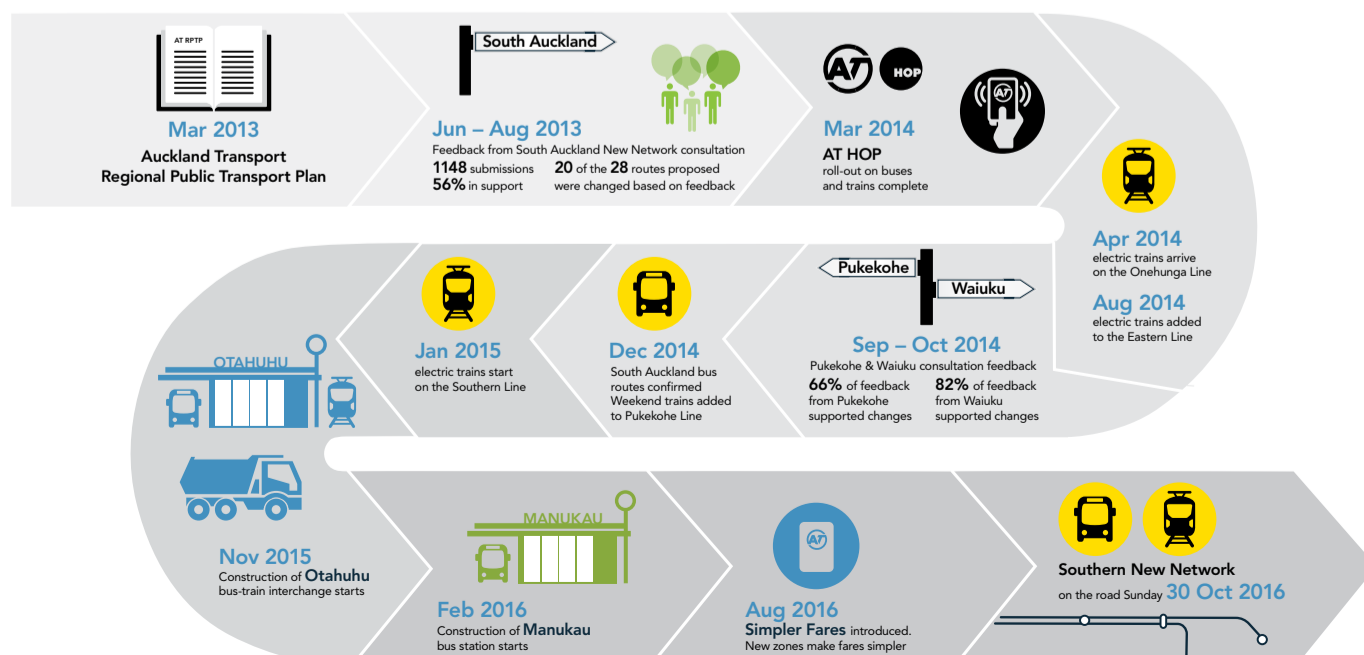
connecting at train stations will make it easier to transfer between buses and trains. Pukekohe train station is being redeveloped and there's a new bus station being built at Manukau.

There's a lot going on to give people more choices and better connections to the places they want to go. We realise a change this big is never easy.

Some people will need to transfer, others will have a new bus route, but everyone will need to get a hold of their new bus timetable to get ready so they don't miss the bus.

Before any changes happen we'll be out in the community, helping you get ready. See page 3 for public information events.

Key steps we took on the road to the Southern New Network



What are the main benefits?

- **SIMPLE** – a simpler network will make public transport a more attractive and easier option for a wider range of activities, as well as new or one-off trips.
- **FREQUENT** – more buses will run frequently throughout the day, 7am – 7pm, 7 days a week. Buses will operate outside the hours 7am to 7pm, but at reduced frequencies.
- **CHOICE** – with new Simpler Fares introduced in August, you'll be able to take advantage of connecting to more destinations. For more information go to AT.govt.nz/SimplerFares

Everything about buses will change on Sunday 30 October

There will be new bus routes, new timetables, more buses more often and for some people the need to transfer to a train to complete their journey. We have several tools to help you make a plan and get ready.

Plan your journey

In three easy steps the online Journey Planner will help you plan your travel. All you need to do is type in your 'from' and 'to' locations and the time you want to travel.

- 1 Where are you starting your journey from?
- 2 Where do you want to go?
- 3 When do you want to go? **It is important to select a date from Sunday 30 October onwards for your new journey details.**

The Journey Planner can be accessed from your smartphone, tablet or desktop computer.

Go to AT.govt.nz/journeyplanner

Visit our Customer Service Centres

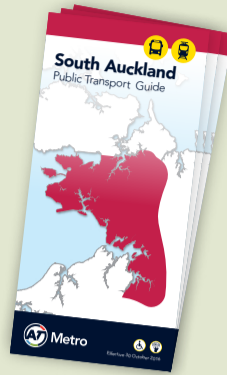
Get assistance from our friendly AT staff at our Customer Service Centres:

Pukekohe Train Station, Papakura Train Station, Manukau Train Station, Botany Town Centre, Newmarket Train Station, AUT City Campus, and Britomart Transport Centre.

Printed timetables

Timetables and suburb guides for buses, trains and ferries can be viewed and downloaded from our website, or pick one up from our Customer Service Centres.

You can order another suburb timetable or extra copies of timetables by calling our Call Centre or sending an email to timetables@AT.govt.nz



Please provide the following:

- ✓ Postal address
- ✓ Contact phone number
- ✓ The route number or the name of the timetable(s), that you need
- ✓ The quantity required



Track My Bus app

Track My Bus is an app that lets you track the progress of your bus in real-time, so you'll always know how much time is up your sleeve. You can save your favourite bus routes and stops, and count down the stops until you're on board.

With the app you can:



- Save multiple bus stops and bus routes
- See in real-time where your bus is on your favourite routes
- Track the progress of your bus from the ten stops before your one
- See when a bus has arrived or already gone

Available from the App Store or Google Play

Get to know your train services

Trips to and from the city for many people will need to be made by train. Local buses will connect at train stations and passengers will need to transfer to the train for trips to the city. Trains on the Southern and Eastern Line run every 10 minutes during peak times.



To get to Manukau from the Southern Line, passengers should transfer to an Eastern Line service at Puhinui Station.

To get to Sylvia Park, Panmure and Glen Innes from the Southern Line, transfer at Otahuhu Station.

After last trains from Monday to Thursday, there is a bus service **322** which has two late night trips between Britomart and Otahuhu Station via Great South Rd.

Free train text updates

To get text updates on train services, register your mobile phone at AT.govt.nz/trainupdates



Moving to a more Connected Network

Auckland's current public transport network is complex, and many routes operate infrequently. With the help of thousands of customers who participated in the consultations held over the last three years, we have re-designed the network across the whole of Auckland – something that has never been done on this scale before.

A more connected network means we can make services much more frequent using the same number of buses, although more journeys will require a bus-to-bus or bus-to-train transfer. Improved bus frequencies, more direct routes, Simpler Fares and new bus stations at Otahuhu, Manukau and Pukekohe will help make it easier for people to connect.

A new way of travelling to the city

Buses will no longer run from South Auckland all the way into Central Auckland, **except:**

- Mangere – **309** and limited peak service **309x**
- Papakura – **360x** limited peak only motorway express service.
- Otahuhu – **322** in peak periods Monday to Friday and after last trains Monday to Thursday along Great South Rd.

Otherwise travel to the city is by taking your local bus to a train station and transferring to a train.

From the city, travel is by taking a train to your local station and transferring to a local bus.

How to get to Symonds St and the city's university campuses

- from Britomart take one of the frequent buses that travel via Symonds St.
- from Newmarket Station take one of the frequent buses that travel via Symonds St.
- from Mangere the 309 and 309x travel to the city via Symonds St and Karangahape Rd.

The following peak services travel via Symonds St and Anzac Ave **322** **360x**

Come talk to us to plan your new journeys

Come along to a public information event happening near you. More events are listed on our webpage.

Spread the word

If you know other people who will be affected by these changes, including other members in your household, please encourage them to plan their own new journeys.

Where to find us	Location	Date	Time
Sir Edmund Hillary Library, Papakura	209 Great South Rd, Papakura	Wed 5 Oct	09:00 – 19:00
Takanini Farmers Market - The AmBUSador events bus	163 Airfield Road, Takanini	Sat 8 Oct	09:00 – 13:30
Sylvia Park Shopping Centre - near the Coffee Club and courtyard	286 Mt Wellington Highway, Mt Wellington	Sun 9 Oct	09:00 – 19:00
Friendship House Community Centre next to Manukau Library courtyard	20 Putney Way, Manukau	Thurs 13 Oct	09:00 – 16:00
Papatoetoe Night Market	Hunters Plaza, 217 Great South Rd, Papatoetoe	Fri 14 Oct	17:30 – 23:00
Otara Flea Market - The AmBUSador events bus	Newbury Street Carpark, Otara	Sat 15 Oct	07:00 – 12:00
Papatoetoe Town Hall	35 St George Street, Papatoetoe	Mon 17 Oct	15:00 – 19:00
Dress-Smart, Onehunga	151 Arthur St, Onehunga	Thurs 20 Oct	10:00 – 19:00
Mangere Market	Mangere Town Centre	Sat 22 Oct	07:00 – 14:00
Franklin Market, Pukekohe - The AmBUSador events bus	Massey Avenue Carpark, Pukekohe	Sat 22 Oct	08:00 – 12:00
Waiuku Town Centre - The AmBUSador events bus	Constable Road Carpark	Sat 22 Oct	13:30 – 15:00
Manurewa Market	Northcrest Way, Manurewa	Sun 23 Oct	07:00 – 12:00
Botany Town Centre – next to Starbucks	Botany Town Centre	Fri 28 Oct	09:00 – 21:00
Otahuhu Bus Station Opening and Southern New Network Community Day	Walmsley Rd, Otahuhu next to train station	Sat 29 Oct	09:00 – 17:00

Southern New Network Community Celebration

Bring the family along to a fun community day on Saturday 29 October to celebrate the opening of the Otahuhu Bus Station (next to the train station) and launch of the new bus services. AT staff will be there to help you plan your new journeys.

A new look for buses

Buses operating within South Auckland, Pukekohe and Waiuku will all be painted in the new silver and blue AT Metro bus colours.

Check the sign at the front of the bus for the route number and destination.



Simpler, easier to understand new bus stop timetables

Hundreds of bus stops across South Auckland, Pukekohe and Waiuku will display a new timetable.

They will tell you which bus services use the bus stop and how often the bus will come during the day. The new timetables are clearer, easier to read and include more bus service information.

Every bus stop timetable will show you the final destination of that particular route. The image below is a mock up of a bus stop timetable.



Example Bus Stop
Near Location

Towards Suburb, Area

Fare zone: Manukau North

Buses from this stop: **77 888 999** Stop **6771**

You are here ▶ Great South Rd - Ryan Pl

please signal driver

FREQUENT																																													
77 Towards Manukau Station	888 Towards Highbrook & Panmure																																												
<table border="1" style="width: 100%; border-collapse: collapse;"> <thead> <tr> <th>MON TO FRI</th> <th>SATURDAY</th> <th>SUNDAY*</th> </tr> </thead> <tbody> <tr> <td>05:25, 05:55, 06:25, 06:55, 07:20</td> <td>05:45, 06:15, 06:45, 07:10, 07:30</td> <td>06:16, 06:46, 07:16, 07:31</td> </tr> <tr> <td colspan="3">then approx. every 15 mins</td> </tr> <tr> <td>19:35</td> <td>19:35</td> <td>19:30</td> </tr> <tr> <td colspan="3">until</td> </tr> <tr> <td>19:54, 20:24, 20:54, 21:24, 21:54, 22:24, 22:54, 23:24</td> <td>20:00, 20:30, 21:00, 21:30, 22:00, 22:30, 23:00, 23:30</td> <td>20:00, 20:30, 21:00, 21:30, 22:00, 22:30, 23:00</td> </tr> <tr> <td colspan="3">Evening buses</td> </tr> </tbody> </table>	MON TO FRI	SATURDAY	SUNDAY*	05:25, 05:55, 06:25, 06:55, 07:20	05:45, 06:15, 06:45, 07:10, 07:30	06:16, 06:46, 07:16, 07:31	then approx. every 15 mins			19:35	19:35	19:30	until			19:54, 20:24, 20:54, 21:24, 21:54, 22:24, 22:54, 23:24	20:00, 20:30, 21:00, 21:30, 22:00, 22:30, 23:00, 23:30	20:00, 20:30, 21:00, 21:30, 22:00, 22:30, 23:00	Evening buses			<table border="1" style="width: 100%; border-collapse: collapse;"> <thead> <tr> <th>MON TO FRI</th> <th>SATURDAY</th> <th>SUNDAY*</th> </tr> </thead> <tbody> <tr> <td>05:25, 05:45</td> <td></td> <td></td> </tr> <tr> <td colspan="3">then approx. every 20 mins</td> </tr> <tr> <td colspan="3">until</td> </tr> <tr> <td colspan="3">14:05 - 19:05</td> </tr> <tr> <td colspan="3">then approx every 20 mins</td> </tr> <tr> <td colspan="3">Afternoon buses</td> </tr> </tbody> </table>	MON TO FRI	SATURDAY	SUNDAY*	05:25, 05:45			then approx. every 20 mins			until			14:05 - 19:05			then approx every 20 mins			Afternoon buses				
MON TO FRI	SATURDAY	SUNDAY*																																											
05:25, 05:55, 06:25, 06:55, 07:20	05:45, 06:15, 06:45, 07:10, 07:30	06:16, 06:46, 07:16, 07:31																																											
then approx. every 15 mins																																													
19:35	19:35	19:30																																											
until																																													
19:54, 20:24, 20:54, 21:24, 21:54, 22:24, 22:54, 23:24	20:00, 20:30, 21:00, 21:30, 22:00, 22:30, 23:00, 23:30	20:00, 20:30, 21:00, 21:30, 22:00, 22:30, 23:00																																											
Evening buses																																													
MON TO FRI	SATURDAY	SUNDAY*																																											
05:25, 05:45																																													
then approx. every 20 mins																																													
until																																													
14:05 - 19:05																																													
then approx every 20 mins																																													
Afternoon buses																																													
999 Towards East Tamaki & Botany																																													
<table border="1" style="width: 100%; border-collapse: collapse;"> <thead> <tr> <th>MON TO FRI</th> <th>SATURDAY</th> <th>SUNDAY*</th> </tr> </thead> <tbody> <tr> <td>06:00</td> <td>06:00</td> <td>07:00</td> </tr> <tr> <td colspan="3">then approx. every 30 mins</td> </tr> <tr> <td>22:30</td> <td>19:00</td> <td>19:00</td> </tr> <tr> <td colspan="3">until</td> </tr> <tr> <td>20:00, 21:00, 22:00</td> <td>20:00, 21:00, 22:00</td> <td>20:00, 21:00, 22:00</td> </tr> <tr> <td colspan="3">Evening buses</td> </tr> </tbody> </table>				MON TO FRI	SATURDAY	SUNDAY*	06:00	06:00	07:00	then approx. every 30 mins			22:30	19:00	19:00	until			20:00, 21:00, 22:00	20:00, 21:00, 22:00	20:00, 21:00, 22:00	Evening buses																							
MON TO FRI	SATURDAY	SUNDAY*																																											
06:00	06:00	07:00																																											
then approx. every 30 mins																																													
22:30	19:00	19:00																																											
until																																													
20:00, 21:00, 22:00	20:00, 21:00, 22:00	20:00, 21:00, 22:00																																											
Evening buses																																													

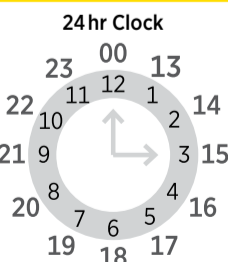
For more information visit www.AT.govt.nz or call 09 366 6400

Bus stop timetables will no longer show every bus departure time. The new look will show the **First** bus of the day, the **Frequency** (how often) of the bus route and **Evening** bus times.

Times are approximate. Actual bus frequency may vary due to traffic, road conditions or other unplanned circumstances.

24 hr Clock

Bus times have been changed to 24 hour clock format. Train times are also in 24 hour clock format.



Fare Zone

tells you what Fare Zone you are in.

Key Station or Connection Point

This symbol indicates a location to connect to other bus and train services to complete your journey. Either a bus to bus transfer or transfer from a bus to a train.

Peak Services

The dashed line indicates services which operate only during morning and afternoon peak periods, Monday to Friday.

Frequent Services

The thick line indicates high frequency services, that run throughout the day, seven days a week.

Destination

Where the bus service ends.

Key changes for your neighbourhood

Refer to the map on page 5 for more detail or go online to our webpage [AT.govt.nz/newnetworksouth](https://at.govt.nz/newnetworksouth) to view individual route maps.

Frequent bus services every 15 minutes, 7am to 7pm, 7 days a week

Three new Frequent bus services taking you across South Auckland, connecting you to local town centres and train stations.

31 Mangere Town Centre, Papatoetoe Train Station, Hunters Corner, Otara, East Tamaki and Botany.

32 Mangere Town Centre, Massey Rd, Otahuhu Station, Otahuhu Town Centre and Sylvia Park.

33 Great South Rd - Papakura, Takanini, Manurewa, Manukau, Hunters Corner, Otahuhu Town Centre and Otahuhu Station.

How to get to the hospitals

The 283 has been renumbered to the **321**

The **321** Hospitals bus goes to Middlemore Hospital, Otahuhu, Great South Rd to Ellerslie Station, Greenlane Clinical Centre, Auckland City Hospital and then to Britomart.

Auckland City Hospital options - From Newmarket or Britomart you can catch one of the many buses that go past the hospital.

Middlemore Hospital options - There are frequent trains to Middlemore Hospital. Catch a bus to your local train station and transfer on to a train.

From Mangere the **326** will take you to Gray Ave on the Mangere side of Middlemore Station.

From Otara take the **575** or from Otahuhu take the **321** Hospitals bus.

The Airporter **380** to Auckland Airport

The **380** Airporter runs every 30 minutes, seven days a week.

The Airporter stops at the International and Domestic terminals and elsewhere on the airport precinct.

It also links Manukau, Papatoetoe Station, Mangere Town Centre and Onehunga.

Late night buses

The **322** bus service has two late night trips after last trains, Monday to Thursday. It travels in both directions between the city and Otahuhu Station along Great South Rd.

NiteRider bus

After midnight the NiteRider is an easy way to get home after a Friday or Saturday night out in the city.

Go to our webpage to view the route maps.

N10 via Manukau Rd to Onehunga, Mangere, Papatoetoe and Otara.

N11 via Great South Rd to Otahuhu, Hunters Corner, Manukau, Manurewa and Papakura.

Great South Rd

Frequent **33** travels between Papakura, Manurewa, Manukau, Hunters Corner and Otahuhu.

Peak service **322** travels between Otahuhu and the city.

Hospitals bus **321** travels between Otahuhu, Ellerslie Station and Greenlane Clinical Centre.

NiteRider **N11** travels from the city to Papakura.

Mangere & Mangere Bridge

Frequent buses from Mangere Town Centre:

- **31** to Papatoetoe, Otara and, Botany
- **32** to Otahuhu Station, Otahuhu Town Centre, and Sylvia Park
- Other local buses from Mangere Town Centre **313** **324**
- A new bus for Boggust Park, Favona to Otahuhu **324**
- Buses between Onehunga and Mangere Town Centre via Mangere Bridge **309** **309x** **313** **380**
- The **380** Airporter between Onehunga, Mangere Bridge, Mangere Town Centre, Airport, Papatoetoe and Manukau remains.
- NiteRider **N10** from the City via Manukau Rd and Onehunga.

Manukau

Manukau will become a central hub for South Auckland buses. The map on page 5 shows all services through Manukau.

- The only buses that will still use the stops outside Westfield Shopping Centre on Leyton Way are the Airporter **380** and long distance coaches.

All other buses will stop near Manukau Station on Davies Ave, until the new bus station is built.

- Frequent **33** Great South Rd service between Otahuhu & Papakura.
- A new peak only circuit **368** **369** between Manukau and Wiri Industrial area.
- A new limited peak only service **352** and the **353** travels through the East Tamaki Industrial area.

Manurewa

Bus stops outside Southmall and Northcrest Shops on Great South Rd will close.

All buses will now use the bus stops at the Manurewa train interchange behind Southmall.

- Wattle Downs service **363** will only go to Manurewa and not to Manukau. To get to Manukau, change on to the Frequent bus **33** at Manurewa.

Otahuhu & Otahuhu Town Centre

Otahuhu Station will become a key connection point for buses and trains. The map on page 5 shows all services through the station.

- **All buses to and from the station will also serve the town centre.**
- Travel to the city by train or the limited peak only service **322** along Great South Rd.
- A new Frequent bus **32** between Sylvia Park and Otahuhu along Mt Wellington Highway.

Otara

- Frequent **31** bus for travel towards Papatoetoe Station and Mangere or towards East Tamaki and Botany.
- New journey to the city is by train. To get to Papatoetoe Station take the Frequent **31** bus. Another option is the **325** to Otahuhu Station.
- New bus journeys to Manukau. The **325** travels via Chapel Downs. The other is the **361** via Tui Rd and Great South Rd.

Onehunga

- The **309** travels to the city via Pah Rd and Manukau Rd. Other bus options to the city include the **302** and **312** via Royal Oak.
- Levels of service will be similar to what currently operates on these roads.
- The 392 has been renumbered to the **390**

Papakura

- Frequent Great South Rd **33** service.
- Travel to the city is by train. The only bus option to the city is the limited peak only motorway express service **360x**
- New Porchester Rd **365** service.
- New Cosgrave Rd **371** service.
- New Karaka Harbourside **378** service.
- Keri Hill **372** Red Hill **373** and Rosehill/Pahurehure **377** will travel through the town centre and connect at the train station. Travel onwards is either by train or the Frequent Great South Rd **33** service.
- Bus service **376** retained between Papakura and Drury.

Papatoetoe & Hunters Corner

- Frequent services **31** **33**
- New journey to the city is by train. The Frequent **31** connects at Papatoetoe Station.
- Bus options to Manukau include the **313** bus via Puhinui and the Airporter **380** via Carruth Rd or by the Eastern Line train.
- NiteRider **N11** from the city to Papakura via Great South Rd.

Takanini

- New Porchester Rd bus **365** to Manurewa Randwick Park, Takanini Station and Papakura.
- New Cosgrave Rd bus **371** between Takanini Station, Bruce Pulman Park, Old Wairoa Rd and Papakura.
- Frequent Great South Rd **33** service.



South Auckland New Network Map

All current South Auckland bus services are changing except for school bus services. However there will be some changes to school buses in 2017. More detailed information is available online including individual route maps, timetables and a list of new bus stops and bus stops closing.

AT.govt.nz/newnetworksouth Follow us on Twitter @AKITransport

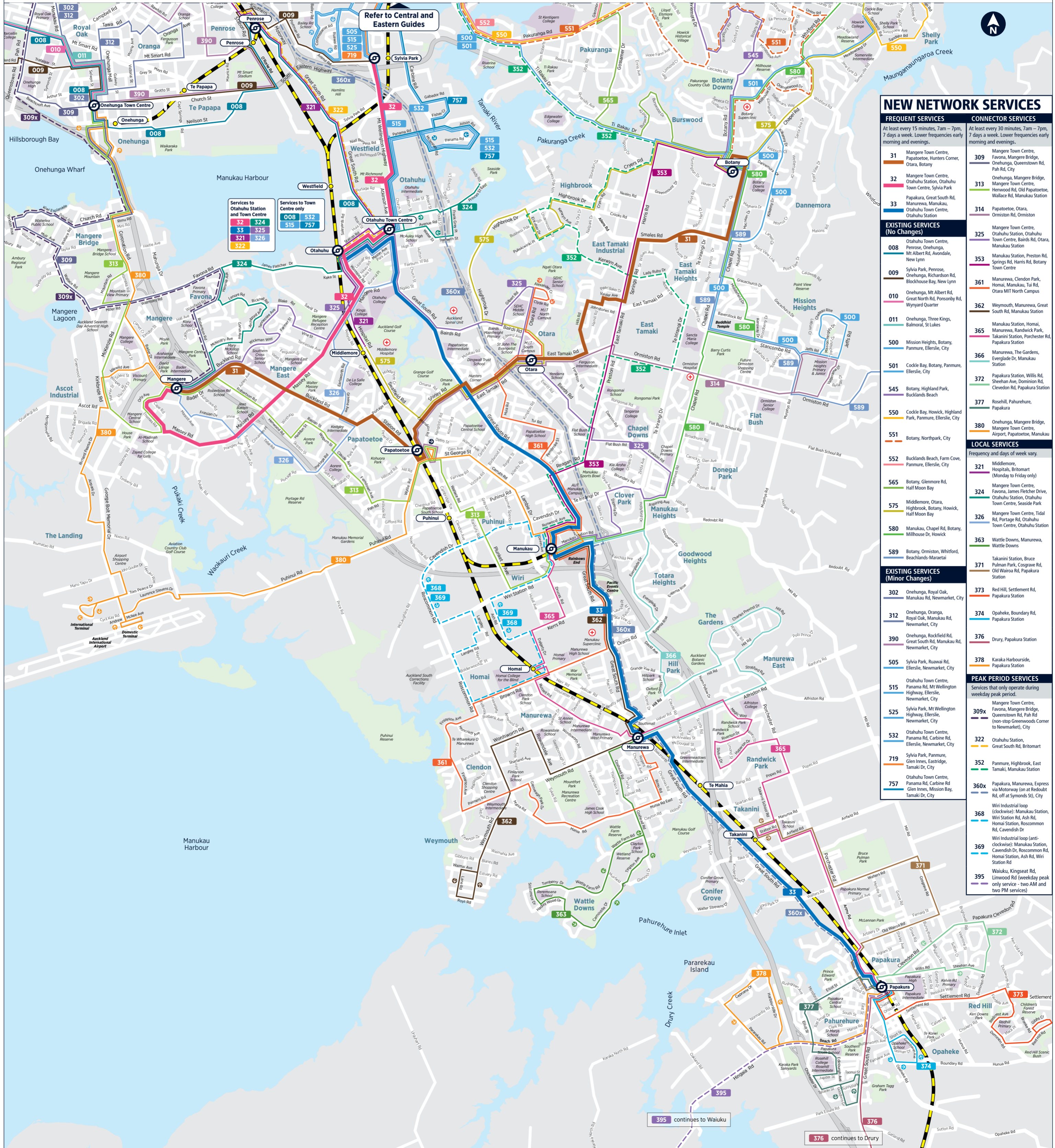
The following bus services are not changing:

008 009 010 011 500 501 545 550 551 552 565 575 580 589

Some other Central Auckland bus routes that connect at Panmure, Sylvia Park, Otahuhu and Onehunga are affected by the Southern New Network changes. In particularly bus routes that travel along Tamaki Drive, Mt Wellington and Manukau Road corridors. These changes take place from **Sunday 30 October 2016**. To check which bus routes are affected go to our webpage AT.govt.nz/newnetworksouth

How to read this map

- Look for your start and end point
 - What is your nearest bus route?
 - Follow that route
 - You may need to transfer to another bus or train to complete your journey
- Refer to your local area bus and train timetable for times and details



NEW NETWORK SERVICES

FREQUENT SERVICES
At least every 15 minutes, 7am – 7pm, 7 days a week. Lower frequencies early morning and evenings.

- 31 Mangere Town Centre, Papatoetoe, Hunters Corner, Otara, Botany
- 32 Mangere Town Centre, Otahuhu Station, Otahuhu Town Centre, Sylvia Park
- 33 Papakura, Great South Rd, Manurewa, Manukau, Otahuhu Town Centre, Otahuhu Station

CONNECTOR SERVICES
At least every 30 minutes, 7am – 7pm, 7 days a week. Lower frequencies early morning and evenings.

- 309 Mangere Town Centre, Favona, Mangere Bridge, Onehunga, Queenstown Rd, Pah Rd, City
- 313 Onehunga, Mangere Bridge, Mangere Town Centre, Hemwood Rd, Old Papatoetoe, Wallace Rd, Manukau Station
- 314 Papatoetoe, Otara, Ormiston Rd, Ormiston
- 325 Mangere Town Centre, Otahuhu Station, Otahuhu Town Centre, Bards Rd, Otara, Manukau Station
- 353 Manukau Station, Preston Rd, Springs Rd, Harris Rd, Botany Town Centre

EXISTING SERVICES (No Changes)

- 008 Otahuhu Town Centre, Papatoetoe, Onehunga, Mt Albert Rd, Avondale, New Lynn
- 009 Sylvia Park, Penrose, Onehunga, Richardson Rd, Blockhouse Bay, New Lynn
- 010 Onehunga, Mt Albert Rd, Great North Rd, Ponsonby Rd, Wyndham Quarter
- 011 Onehunga, Three Kings, Balmoral, St Lukes
- 500 Mission Heights, Botany, Panmure, Ellerslie, City
- 501 Cockle Bay, Botany, Panmure, Ellerslie, City
- 545 Botany, Highland Park, Bucklands Beach
- 550 Cockle Bay, Howick, Highland Park, Panmure, Ellerslie, City
- 551 Botany, Northpark, City

LOCAL SERVICES

- Frequency and days of week vary.
- 321 Middlemore, Hospitals, Britomart (Monday to Friday only)
 - 324 Mangere Town Centre, Favona, James Fletcher Drive, Otahuhu Station, Otahuhu Town Centre, Seaside Park
 - 326 Mangere Town Centre, Tidal Rd, Portage Rd, Otahuhu Station
 - 363 Wattle Downs, Manurewa, Wattle Downs
 - 371 Takapuna Station, Bruce Pulman Park, Cosgrave Rd, Old Wairoa Rd, Papakura Station
 - 373 Red Hill, Settlement Rd, Papakura Station
 - 374 Opaheke, Boundary Rd, Papakura Station
 - 376 Drury, Papakura Station
 - 378 Karaka Harbourside, Papakura Station

EXISTING SERVICES (Minor Changes)

- 302 Onehunga, Royal Oak, Manukau Rd, Newmarket, City
- 312 Onehunga, Oranga, Royal Oak, Manukau Rd, Newmarket, City
- 390 Onehunga, Rockfield Rd, Great South Rd, Manukau Rd, Newmarket, City
- 505 Sylvia Park, Ruawai Rd, Ellerslie, Newmarket, City
- 515 Otahuhu Town Centre, Panama Rd, Mt Wellington Highway, Ellerslie, Newmarket, City
- 525 Sylvia Park, Mt Wellington Highway, Ellerslie, Newmarket, City
- 532 Otahuhu Town Centre, Panama Rd, Carbine Rd, Ellerslie, Newmarket, City
- 719 Sylvia Park, Panmure, Glen Innes, Eaststage, Tamaki Dr, City
- 757 Otahuhu Town Centre, Panama Rd, Carbine Rd, Glen Innes, Mission Bay, Tamaki Dr, City

PEAK PERIOD SERVICES

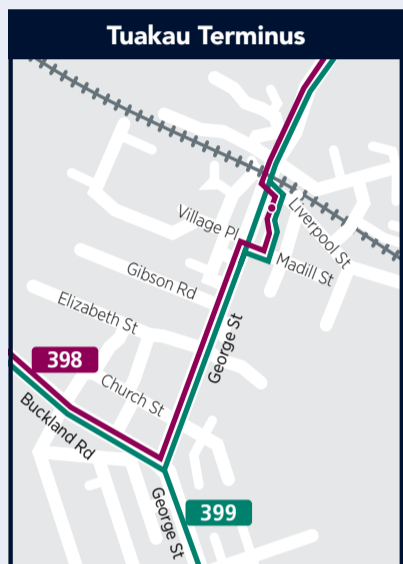
- Services that only operate during weekday peak periods.
- 309x Mangere Town Centre, Favona, Mangere Bridge, Queenstown Rd, Pah Rd (non-stop Greenwoods Corner to Newmarket), City
 - 322 Otahuhu Station, Great South Rd, Britomart
 - 352 Panmure, Highbrook, East Tamaki, Manukau Station
 - 360x Papakura, Manurewa, Express via Motorway (on at Redoubt Rd, off at Symonds St), City
 - 368 Wiri Industrial loop (clockwise): Manukau Station, Wiri Station Rd, Ash Rd, Homai Station, Roscommon Rd, Cavendish Dr
 - 369 Wiri Industrial loop (anti-clockwise): Manukau Station, Cavendish Dr, Roscommon Rd, Homai Station, Ash Rd, Wiri Station Rd
 - 395 Waiuku, Kingsseat Rd, Linwood Rd (weekday peak only service - two AM and two PM services)

Pukekohe New Network Map

We have more information online at AT.govt.nz/newnetwork

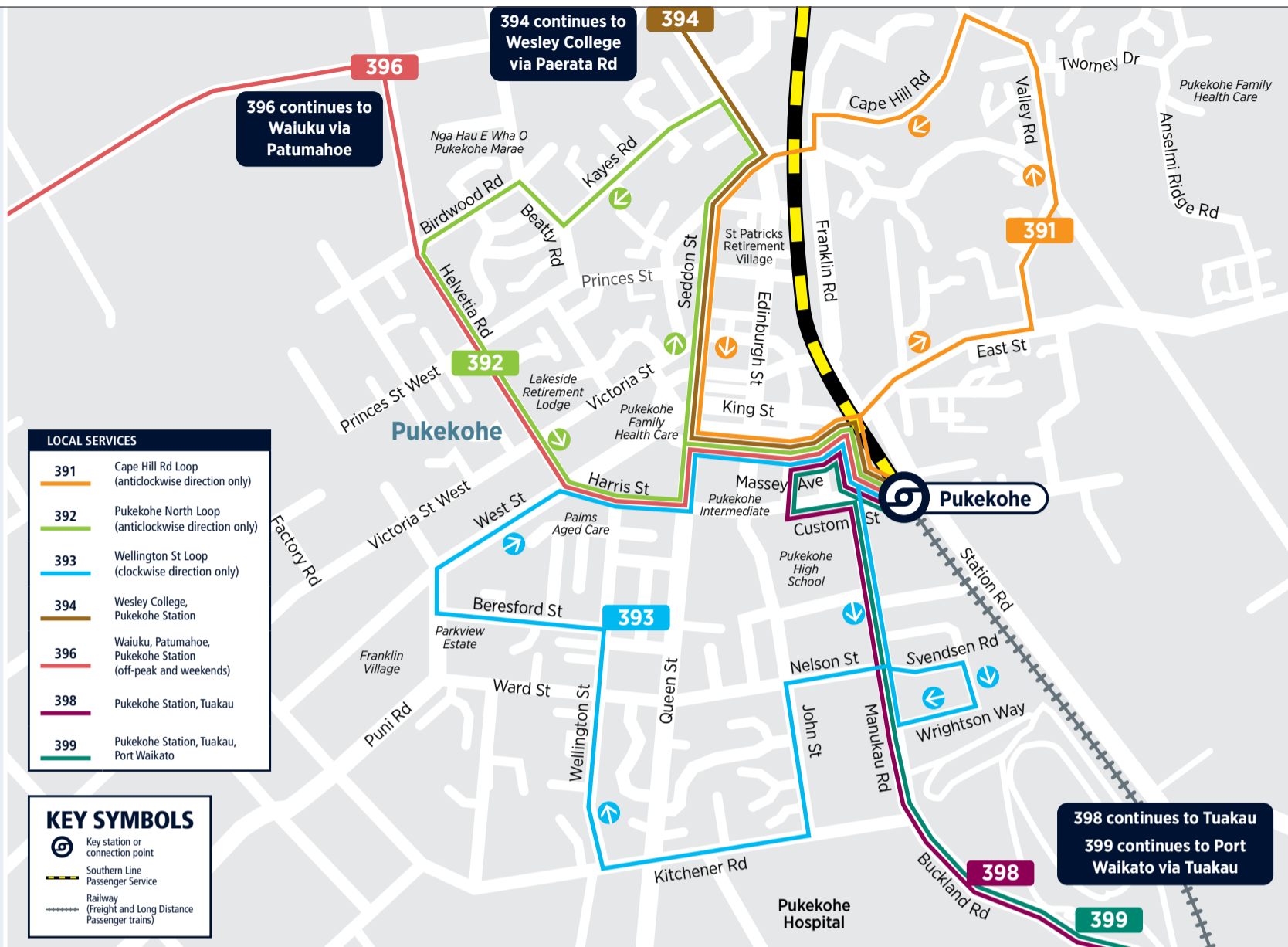
Pukekohe

- Three new bus services for Pukekohe, running every 30 minutes, seven days a week.
- Pukekohe local loop services will serve the town centre, shopping area and connect with train services at the station.
- A limited bus service from Pukekohe to Wesley College/Paerata.
- Removal of bus services between Paerata and Papakura.



LOCAL SERVICES	
391	Cape Hill Rd Loop (anticlockwise direction only)
392	Pukekohe North Loop (anticlockwise direction only)
393	Wellington St Loop (clockwise direction only)
394	Wesley College, Pukekohe Station
396	Waiuku, Patumahoe, Pukekohe Station (off-peak and weekends)
398	Pukekohe Station, Tuakau
399	Pukekohe Station, Tuakau, Port Waikato

KEY SYMBOLS	
	Key station or connection point
	Southern Line Passenger Service
	Railway (Freight and Long Distance Passenger trains)



Tuakau and Port Waikato buses

The 476 has been renumbered to **398** and the 50 has been renumbered to **399**. These buses will now all travel via Massey Ave and end at Pukekohe Station. Travel to Papakura or the city will be by train. These buses have had some time changes to better fit with the train timetable.

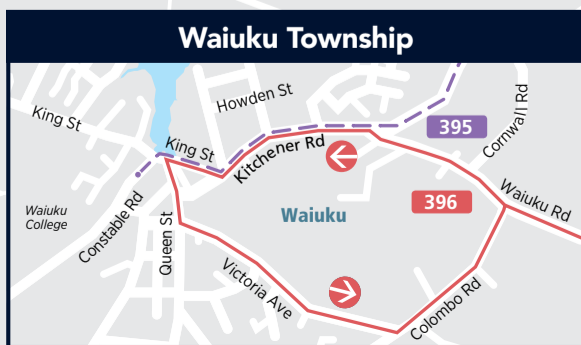
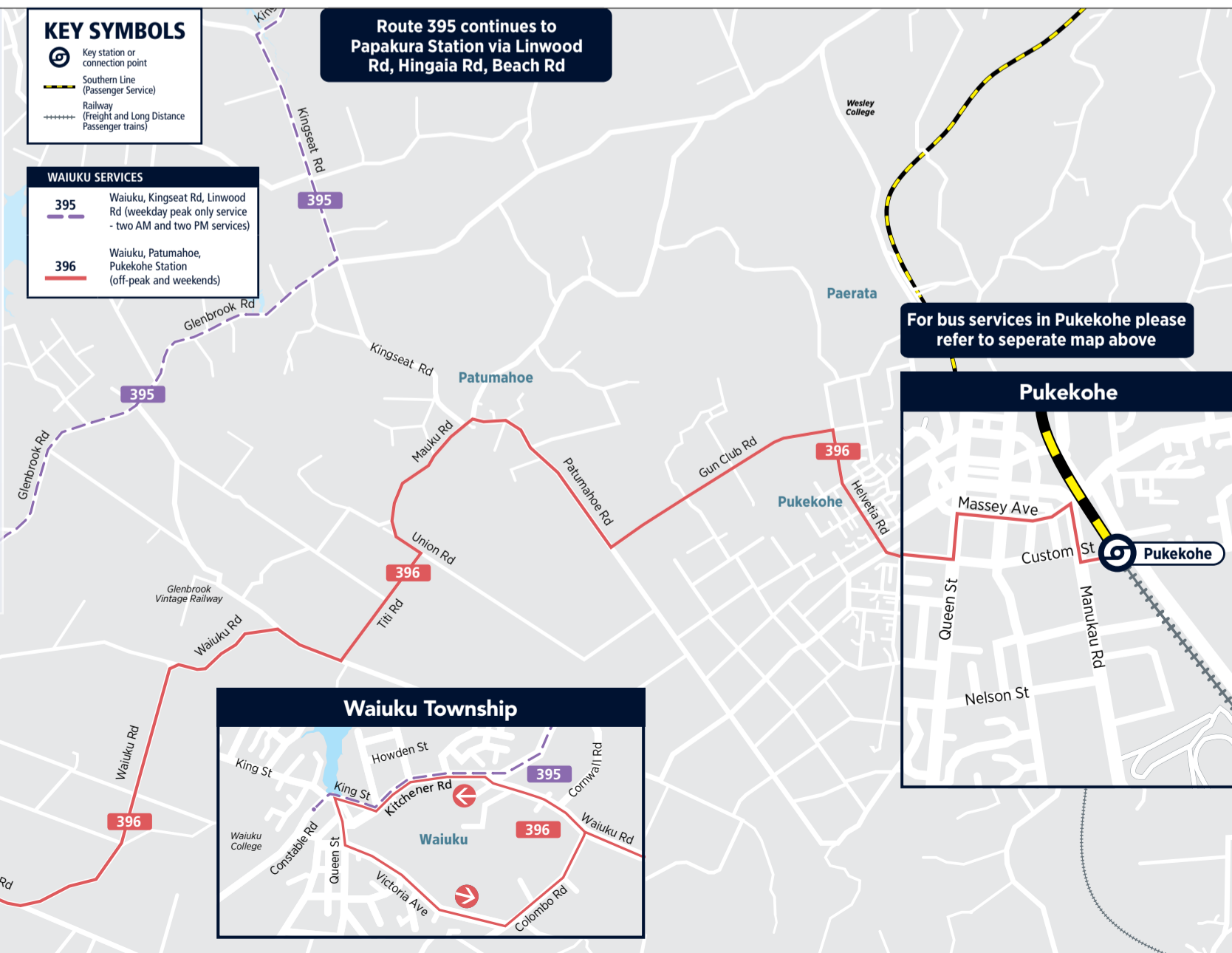
Waiuku New Network Map

Waiuku

- A peak weekday Waiuku to Papakura service which will go via Kingseat. This is the same route as the current 479.
- A new route between Waiuku and Pukekohe, seven days a week.
- It was planned to run the Waiuku bus route **396** via the Glenbrook Vintage Railway station during opening hours. However a suitable solution for buses to stop and turn around at Glenbrook Station is still being explored. In the meantime it will be possible to travel on the **396** bus to reach the Waiuku end of the Glenbrook Vintage Railway.

KEY SYMBOLS	
	Key station or connection point
	Southern Line (Passenger Service)
	Railway (Freight and Long Distance Passenger trains)

WAIUKU SERVICES	
395	Waiuku, Kingseat Rd, Linwood Rd (weekday peak only service - two AM and two PM services)
396	Waiuku, Patumahoe, Pukekohe Station (off-peak and weekends)



Hours of operation and frequencies

The information below is to give an overview of the hours buses and trains operate and how often they run.

- Refer to your local bus or train timetable for **actual** start and finish times and frequencies of services. The times are in a 24 hour clock format.
- All day frequency is generally between 07:00 to 19:00 every day
- Peak frequencies are generally between 07:00 to 09:00 in the morning and between 16:00 and 18:00 in the evening
- Evening frequencies generally apply after 19:00 every day, and before 07:00 on weekends

ROUTE	DESCRIPTION	WEEKDAYS				SATURDAY - SUNDAY		
		First bus/ last bus	Peak frequency (min)	All-day frequency (min)	Evening Frequency (min)	All-day frequency (min)	Evening frequency (min)	
	Pukekohe Line: first train to Papakura 05:03, last train from Britomart, Mon-Thur 20:58		20	60	60	60	60	
	Southern Line: first train to Britomart 05:06, return train Mon-Thur 22:28		10	20	20	30	30	
	Eastern Line: first train to Britomart 05:17, return train Mon-Thur 22:12		10	20	20	30	30	
31	Mangere Town Centre, Papatoetoe, Hunters Corner, Otara to Botany	05.30 23.30	15	15	30	15	30	
32	Mangere Town Centre, Massey Rd, Otahuhu to Sylvia Park	05.30 23.00	15	15	30	15	30	
33	Great South Rd, Papakura, Manurewa, Manukau to Otahuhu	05.00 midnight	15	15	30	15	30	
309	Mangere Town Centre, Favona, Onehunga, Pah Rd to City Centre via Manukau Rd and Newmarket	05.30 22.30	30	30	30	30	30	
309x	Mangere Town Centre, Favona, Pah Rd to City (Express) (non stop from Greenwoods Corner to Newmarket)	Limited peak only	25	Four services in the morning. Four return services in the evening peak.		N/A		
313	Onehunga to Manukau via McKenzie Rd, Mangere, Ferndown Ave and Papatoetoe	05.30 23.30	20	30	30	30	30	
314	Papatoetoe, Otara, Ormiston Rd via Shirley Rd and East Tamaki Rd	06.00 19.30	20	30	-	30	30	
321	Middlemore, Hospitals, Britomart	05.30 19.00	20	30	-	N/A		
322	Otahuhu, Great South Rd to City	Peak only	20	Additional two late night trips after last trains Mon to Thur 22:45 & 23:15.		N/A		
324	Mangere Town Centre, Favona, Otahuhu to Seaside Park via Boggust Park, James Fletcher Dr and Otahuhu Town Centre	06.00 19.30	30	60	-	60	-	
325	Mangere Town Centre, Otahuhu, Bairds Rd, Otara to Manukau via MIT North Campus and Chapel Downs	05.30 23.00	15	30	30	30	30	
326	Mangere Town Centre, Tidal Rd to Otahuhu Station via Portage Rd, Mangere Rd and Otahuhu Town Centre	06.30 19.00	30	60	-	60	-	
352	Panmure, Highbrook, East Tamaki, Manukau Station	Limited peak only	20	Services run every 20 minutes from 05:30 to 08:45. Then services start again from 14:00 to 19:00.		N/A		
353	Manukau Station, Preston Rd, Springs Rd to Botany Town Centre	06.00 22.30	30	30	30	30	60	
360x	Papakura, Manurewa to City (Express) via motorway. On at Redoubt Rd, off at Symonds St	Limited peak only	20/30	Three services in the morning, 06:10, 06:30, 06:50. Return services from city 16:05, 16:35, 17:05.		N/A		
361	Manurewa, Clendon Park, Manukau to Otara via Browns Rd, Tui Rd and MIT North Campus	05.30 23.30	20	30	30	30	30	
362	Weymouth to Manukau Station via Manurewa and Great South Rd	05.30 23.30	20	30	30	30	30	
363	Wattle Downs to Manurewa Loop via Coxhead Rd	05.45 21.45	30	60	60	60	60	
365	Manukau, Homai, Manurewa, Randwick Park, Takanini Station to Papakura via Russell Rd and Porchester Rd	05.30 23.00	20	30	30	30	60	
366	Manurewa, The Gardens to Manukau via Everglade Drive	06.00 23.30	15	30	30	30	60	
368	Wiri Industrial Loop Clockwise (Peak only) Manukau Station via Ash Rd, Homai Station, Roscommon Rd and Cavendish Dr	05:30 - 09:00 16:00 - 18:30	30	Services alternate to leave every 15 minutes from Manukau Station.		N/A		
369	Wiri Industrial Loop Anti clockwise (Peak only) Manukau Station via Cavendish Dr, Roscommon Rd, Homai Station and Ash Rd	05:15 - 09:15 15:45 - 18:15	30			N/A		
371	Takanini Station, Bruce Pulman Park, Cosgrave Rd via Old Wairoa Rd to Papakura Station	06.00 21.30	30	60	60	N/A		
372	Keri Hill Loop to Papakura Station via Willis Rd, Dominion Rd and Clevedon Rd	05.30 23.30	20	30	30	30	30	
373	Red Hill, Settlement Rd to Papakura Shops via Redcrest Ave and Papakura Station	05.00 21.30	30	60	60	60	60	
374	Opapeke Loop to Papakura Shops via Boundary Rd and Greenhaven Ave	05.30 21.30	30	60	30	N/A		
376	Drury to Papakura Shops via Great South Road and Papakura Station	06.00 21.00	30	60	60	60	60	
377	Rosehill, Pahurehure to Papakura Station via Jupiter St and Elliot St	05.30 23.00	20	30	30	30	60	
378	Karaka Harbourside to Papakura Station via Capriana Dr	05.30 21.00	30	60	60	60	60	
380	Onehunga, Mangere Town Centre, Airport, Papatoetoe, Manukau	04.30 Midnight	30	30	30	30	30	
391	Cape Hill Rd Loop via East St and Cape Hill Rd (anticlockwise direction only)	05.30 21.30	20	30	60	30	60	
392	Pukekohe North Loop via Seddon St and Helvetia Rd (anticlockwise direction only)	05.30 21.30	20	30	60	30	60	
393	Wellington St Loop via Manukau Rd, West St (clockwise direction only)	05.30 21.30	20	30	60	30	60	
394	Wesley College to Pukekohe Station Limited service. Peak services supplemented by midday services. No regular frequency.	05.30 17.30	60	-	-	120	-	
395	Waiuku, Kingseat Rd, Linwood Rd to Papakura via Glenbrook Rd, Kingseat and Karaka,	Limited peak only	60	Two morning services 05:48 & 06:48. Two return services 17:47 & 18:47.		N/A		
396	Waiuku, Patumahoe to Pukekohe Station via Waiuku Rd (off peak and weekends)	07.30 17.00	-	120	Monday to Friday, five services a day. On weekends four services a day.			
398	Pukekohe Station to Tuakau	Limited peak only	Limited peak Monday to Friday and limited trips Wednesdays only.			N/A		
399	Port Waikato, Tuakau to Pukekohe Station	Thursdays only					N/A	
N10	City, Manukau Rd to Otara via Onehunga, Mangere and Papatoetoe							
N11	City, Great South Rd to Papakura via Otahuhu, Hunters Corner, Manukau and Manurewa	Two trips on Friday and Saturday nights: 01:25 and 03:10, leaving from the city.						