

200mm DO NOT SCALE - IF IN DOUBT, ASK

150
100
90
80
70
60
50
40
30
20
10
0

ORIGINAL SIZE A1



LEGEND

- NEW WHITE ROADMARKING
- EXISTING ROADMARKING
- EXISTING KERBLINE
- EXISTING BROKEN YELLOW LINES 'NSAAT'
- REPAINT BROKEN YELLOW LINES 'NSAAT'
- NEW / RELOCATED SIGN / BELISHA BEACON
- EXISTING SIGN
- NEW FOOTPATH
- ANTI-SKID
- NEW SPEED TABLE
- NEW TACTILE PAVERS
- NEW DIRECTIONAL TACTILE PAVERS
- VEHICLE CROSSING
- NEW STREET LIGHT
- EXISTING STREET LIGHT
- NEW / EXISTING FLAG POLE



AUCKLAND TRANSPORT
 MASS ACTION PEDESTRIAN
 IMPROVEMENTS
 58 EBAN AVENUE, HILLCREST
 SHEET 1 OF 2

FOR CONSULTATION			
Date Stamp 25 OCTOBER 2018			
A1	NTS	A3	NTS
Drawing No. 144272 CS3-100			Rev. A

200mm DO NOT SCALE - IF IN DOUBT, ASK

150

100

90

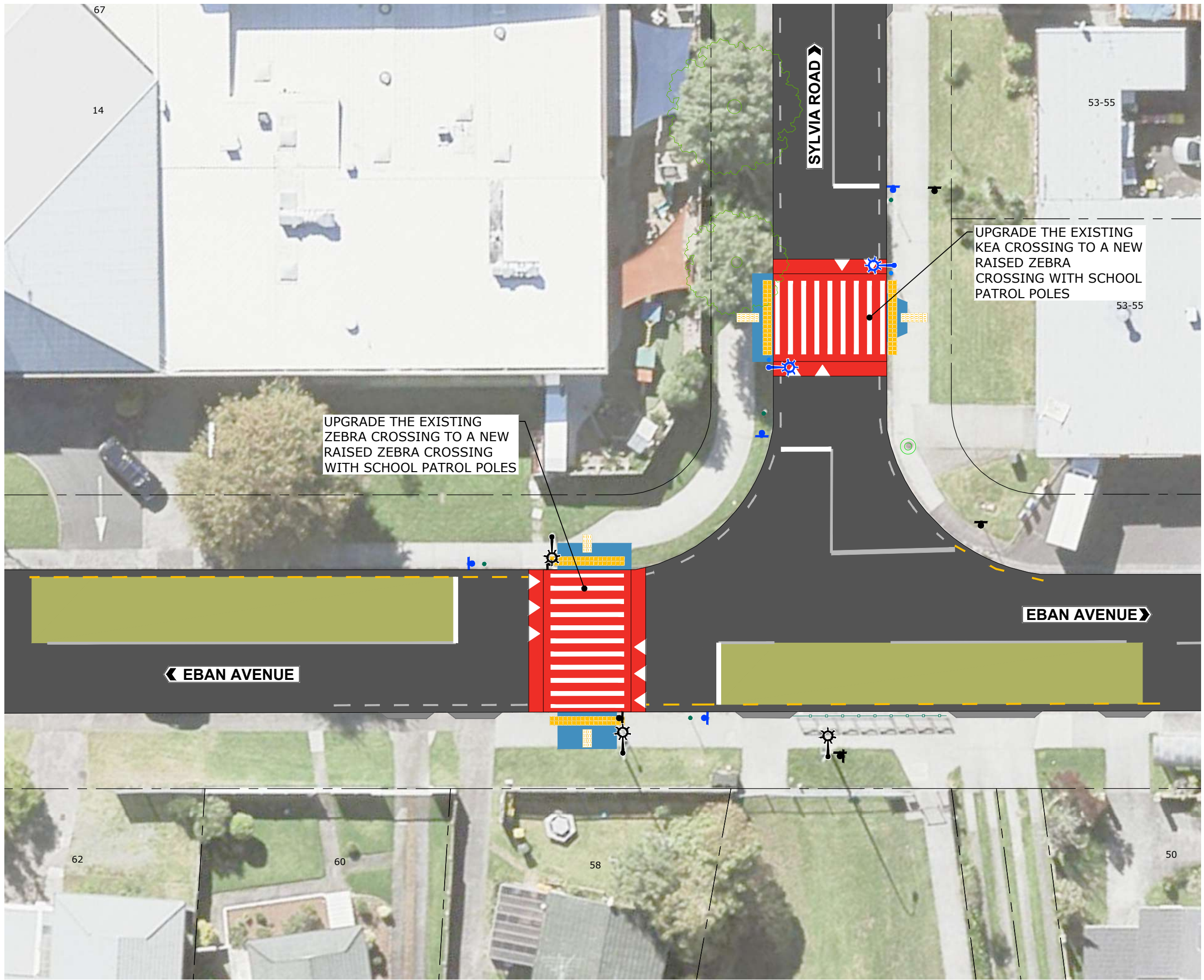
80

70

60

50

ORIGINAL SIZE A1



LEGEND

- NEW WHITE ROADMARKING
- EXISTING ROADMARKING
- EXISTING KERBLINE
- EXISTING BROKEN YELLOW LINES 'NSAAT'
- REPAINT BROKEN YELLOW LINES 'NSAAT'
- NEW / RELOCATED SIGN / BELISHA BEACON
- EXISTING SIGN
- NEW FOOTPATH
- ANTI-SKID
- NEW SPEED TABLE
- NEW TACTILE PAVERS
- NEW DIRECTIONAL TACTILE PAVERS
- VEHICLE CROSSING
- NEW STREET LIGHT
- EXISTING STREET LIGHT
- NEW / EXISTING FLAG POLE



AUCKLAND TRANSPORT
 MASS ACTION PEDESTRIAN
 IMPROVEMENTS
 58 EBAN AVENUE, HILLCREST
 SHEET 2 OF 2

FOR CONSULTATION

25 OCTOBER 2018

A1	NTS	A3	NTS
Drawing No. 144272 CS3-101		Rev. A	