



PRINCIPAL'S REQUIREMENT




Why have we adopted ConstructSafe as a principal's requirement?

Construction is regarded as a high-risk industry by the health and safety regulator, WorkSafe New Zealand. Raising the health and safety capability of the people that work in construction is a critical element of improving the overall health and safety performance of the industry.


As clients of construction in New Zealand we have the greatest influence over standards for health and safety in the industry. Far too many of our people in the New Zealand construction industry either fail to make it home from work or have their lives permanently changed through serious injury or ill-health.

Over and above the legal duty of care, client organisations like us have a clear ethical obligation to use our influence to create a step change in our industry's health and safety performance.


 **ConstructSafe** *is the standard for health and safety competency certification in the New Zealand construction industry*


 **ConstructSafe** *is an independent assessment of worker Health & Safety competency, using a standard which is set by the industry field experts; the people who undertake this type of work on a regular basis*


 **ConstructSafe** *is adapted to be applicable to all forms of construction work and sites*


 **ConstructSafe** *provides value for clients, constructors and individual workers through:*

- *Efficiency benefits*
- *Reduction in training time and costs*
- *Shorter more site-specific risk focused induction processes*
- *Less repetition and duplication of effort across organisations and projects*
- *Improved worker engagement in health and safety*
- *Assurance of a reasonably practicable standard*

 **ConstructSafe** *delivers insight into specific areas of worker capability, allowing learning to be focused where it matters*

 **ConstructSafe** *measures independently that a person meets a standard and can identify where they need the most help to improve.*


 **ConstructSafe** *assists with supplier selection processes by enabling contractors to provide information on worker health and safety competency*

 ConstructSafe is an industry led competency standard with hundreds of organisations already signed up to the scheme:

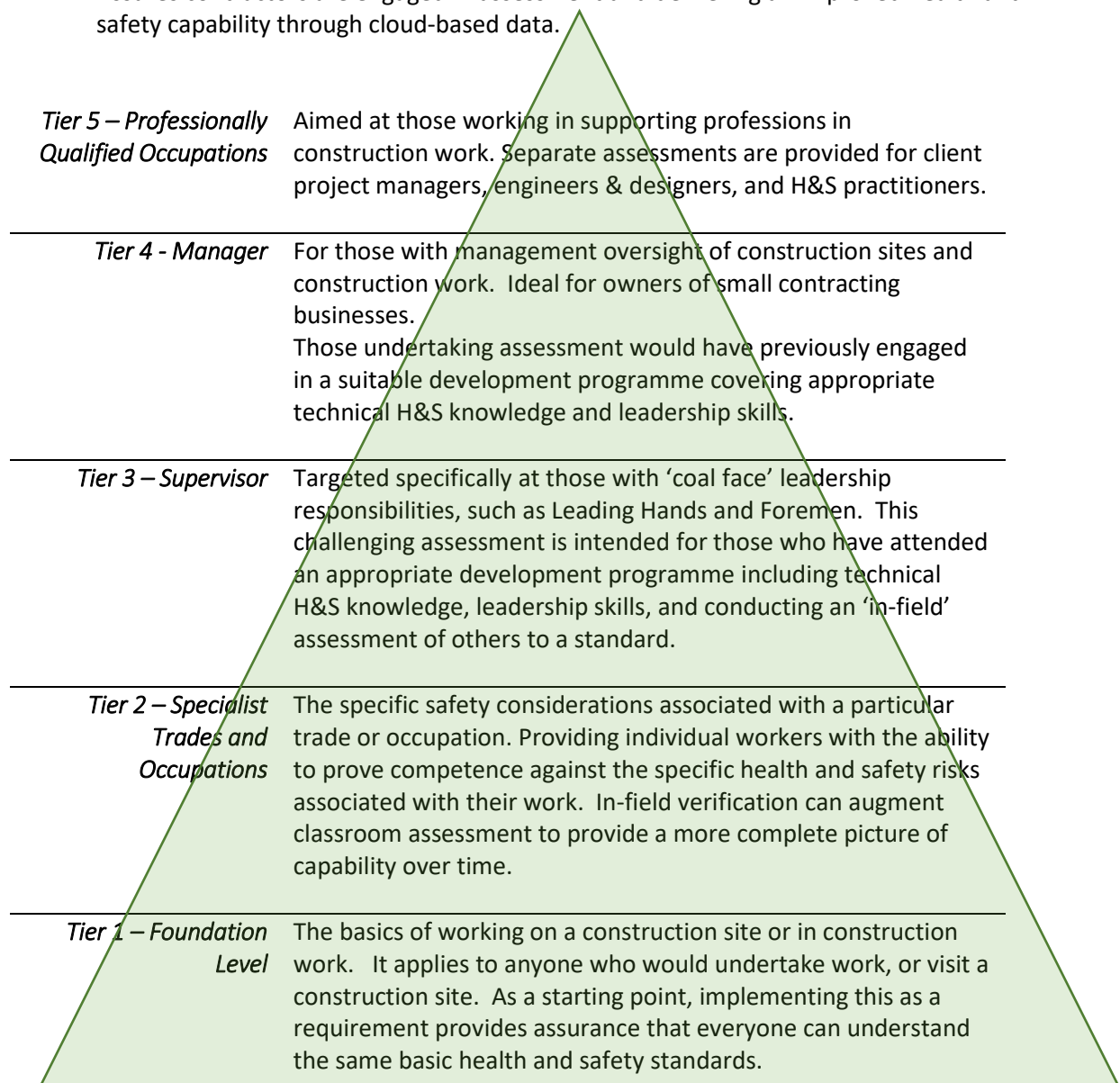


How are we effecting a positive change?

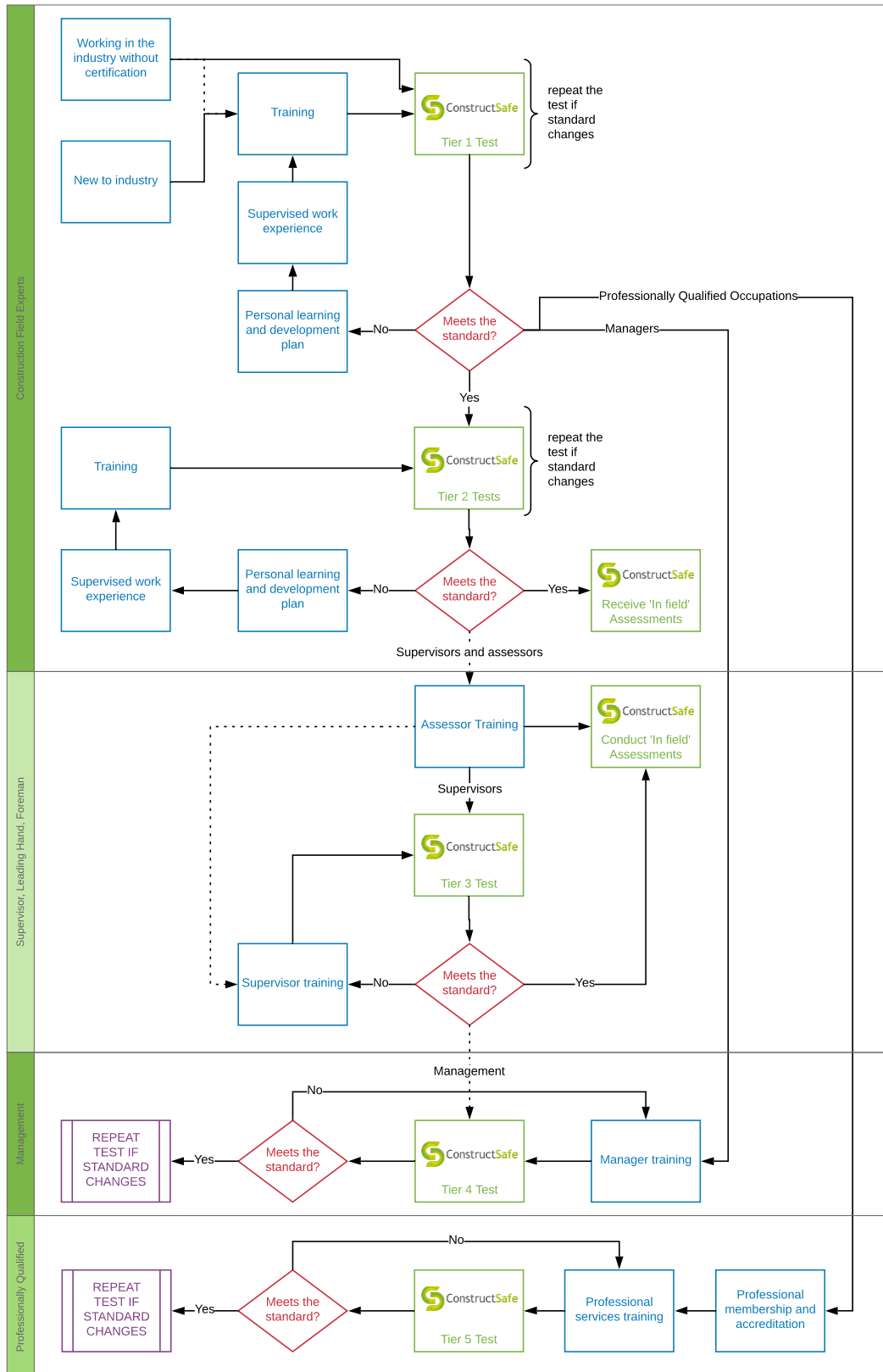
We will influence health and safety standards within our supply chain by setting a clear health and safety expectation for consistent standards of health and safety competency.

 **ConstructSafe** Is the standard we expect for health and safety competency because it:

- Provides a simple 5 Tier approach that covers health and safety standards across the plethora of construction related trades and occupations.
- Sets a minimum Tier 1 Foundation competency that applies to everybody, regardless of role.
- Enables access to competency information and data through 'in the cloud' open source information.
- Delivers easy to use technology infrastructure for classroom and 'in the field' assessments.
- Assures contractors are engaged in assessment and delivering an improved health and safety capability through cloud-based data.



How does ConstructSafe competency certification fit into a connected training and certification system?



What steps are we taking to apply ConstructSafe as the standard?

Application of the standard is in two parts:

- Principal's requirement for contracting organisations in the supply chain to adopt the scheme; and
- Expectations for site/contract induction and site access.

Principal's Requirement for ConstructSafe

The ConstructSafe competency assessment scheme provides the construction industry with a framework for individuals to demonstrate health and safety competence. It enables construction sites to reduce the potential for untrained or inexperienced workers from creating hazardous situations for themselves or others. It is an industry lead scheme which helps raise the health and safety standards and creates a safer and more competent New Zealand workforce.

Auckland Transport has universally adopted the ConstructSafe competency assessment scheme as a principal's requirement. All construction sites and construction work are expected to meet the minimum requirement of ConstructSafe Tier 1 (Foundation Health and Safety Competence) for all workers. Workers entering a construction site or carrying out construction work, who have not attained Tier 1 competency **will** be authorised to enter construction sites but will be required to be appropriately supervised at all times, until they attain the standard within the defined learning and development plan.

A reasonable timeframe for a worker to be admitted to site under supervision arrangements will normally be 30 days, unless the individual training and development states otherwise for a legitimate learning reason (e.g. engaged on a longer-term numeracy and literacy programme) This provides adequate time for a worker to achieve appropriate information, instruction, supervision, or training in order to enable a successful assessment at Tier 1 Foundation Level.

Auckland Transport will require case by case exemptions for those requiring a longer period of development (e.g. a numeracy and literacy development programmes). Evidence will be required that the individual is enrolled and engaged in a suitable training programme.

Auckland Transport requires the construction supply chain to adopt future Tiers of ConstructSafe as and when they become available; Auckland Transport will consult on reasonable timescales and notice for adoption. It is expected that contracted organisations engaging in construction work or entering construction sites to proactively engage in preparing their workers (including sub-supply chain) for relevant ConstructSafe assessments appropriate to their trade or occupation.

Plant Operators' Competency Scheme

Auckland Transport requires those who operate construction mobile plant in the supply chain to operate the ConstructSafe Plant Operator's Competency Scheme. It is expected that:

All contractors currently operating mobile plant **employing 50 people, or more** are to:

- Sign-up as ConstructSafe assessor organisations

- Appoint ConstructSafe moderators & assessors
- Engage operators in ConstructSafe Tier 2 Mobile Plant testing and app use
- Start in-field verification checks on own and sub-contractor operators

All contractors currently operating mobile plant **employing less than 50 people** are to:

- Engage operators in ConstructSafe Tier 2 Mobile Plant testing and app use
- Start in-field verification checks on own and sub-contractor operators

And are encouraged to consider:

- Signing-up as ConstructSafe assessor organisations; and
- Appointing moderators & assessors

Implementation

This requirement is applicable across the organisation and supply chain where construction work is present and where construction sites are established.

Associated Definitions

Applies to anyone carrying out **work of any kind** on a **“construction site”**.



ConstructSafe **“construction site”** includes any place where construction work is being carried out or to which the workers have access, but does not include a workplace within the site which is set aside for purposes other than construction work (e.g. site offices);



ConstructSafe applies to all those who are carrying out **any “construction work”**.

“construction work” means the carrying out of any building, civil engineering or engineering construction work and includes:

- (a) the construction, alteration, conversion, fitting out, commissioning, renovation, repair, upkeep, redecoration or other maintenance (including cleaning which involves the use of water or an abrasive at high pressure, or the use of corrosive or toxic substances), de-commissioning, demolition or dismantling of a structure or asset;
- (b) the preparation for an intended structure, including site clearance, exploration, investigation (including site survey) and excavation (including archaeological investigations), and the clearance or preparation of the site or structure for use or occupation at its conclusion;
- (c) the assembly on site of prefabricated elements to form a structure or the disassembly on site of the prefabricated elements which, immediately before such disassembly, formed a structure;

- (d) the removal of a structure, or of any product or waste resulting from demolition or dismantling of a structure, or from disassembly of prefabricated elements which immediately before such disassembly formed such a structure;
- (e) the installation, commissioning, maintenance, repair or removal of mechanical, electrical, gas, compressed air, hydraulic, telecommunications, computer or similar services which are normally fixed within or to a structure;
- (f) the installation, commissioning, maintenance, repair, movement or removal of utilities (including gas, electricity, water or communications infrastructure) (excluding overhead line and tower working which have industry specific competency and licencing requirements).

Expectations for site/contract induction and site access

Supplier organisations must provide appropriate induction and access arrangements that include checks that **ALL** workers engaging in construction work or accessing construction sites either:

- hold a current¹ ConstructSafe Tier 1 Competency; or
- Are appropriately supervised until they achieve a ConstructSafe Tier 1 Competency.

Presentation of any physical card or certificate will not be accepted as a suitable check. ConstructSafe checks must be made by:

- Checking the individual using the website portal (<http://www.constructsafe.kiwi/check/profile>); or
- Using the ConstructSafe app to check the cloud record (<https://play.google.com/store/apps/details?id=com.constructsafe.constructsafe> or <https://itunes.apple.com/nz/app/constructsafe/id1242272450?mt=8>); or
- Receiving a ConstructSafe competency report from any organisation committed to the scheme (<http://www.constructsafe.kiwi/SignUp/Companysignup.html>).

ConstructSafe monitors the location of all competency checks made through the system and can provide information on volumes of checks for any given location or site.

¹ Currency of ConstructSafe assessments is referred to by version rather than expiry date. Version numbers are divided into major and minor revisions. Assessments will only expire if there has been a major revision in issue for 12 months. Major revisions are communicated widely and sufficient notice is provided when a new major revision is available. Expired assessment versions will be highlighted when records are checked in the system.