

New Lynn to Avondale Shared Path Newsletter

July 2020



Artist's impression of the underpass leading through into Chalmers Reserve from St Georges Road



Welcome to the first newsletter for the New Lynn to Avondale Shared Path Project - a new walking and cycling route along the rail corridor between New Lynn and Avondale.

Auckland Transport (AT) has partnered with the Whau Local Board, Auckland Council and the NZ Transport Agency to build the 2.9km shared path which will grow our cycling network to connect communities and provide more access to safe cycling infrastructure.

The project started earlier in the year and now after a short hiatus thanks to the COVID-19 pandemic, we are back underway! Read on to learn a bit more about the project, what it aims to achieve and where we are up to at this stage.



Similar shared pathway already in place in Auckland



PROJECT BENEFITS



A safer, more appealing route

for pedestrians and people on bikes.



Easier access

to local train stations and town centres with new wayfinding signage.



Reduced traffic congestion

and air pollution from vehicles.



Designed with safety in mind

with lighting and landscaping improvements.



Sign Up! Keep up to date with our regular construction updates throughout the project. Just send an email to NL2A@dempseywood.co.nz with the subject 'sign up'

Expanding our network

As Auckland's population grows, we need to provide more choices and find ways to make it easier and safer for people to walk or ride a bike in our city.

We want to create a future where everyone feels comfortable riding a bike - we can only do this if there are safe, connected places making it easier for people of all ages, abilities and backgrounds to ride and walk - whether it be to school, work, the local shops, the football grounds or to visit friends or family.

The New Lynn to Avondale Shared Path will create a continuous walking and cycling link between New Lynn Train Station, Avondale Train Station, Waterview shared path, the Northwestern cycleway and city centre networks. The path will be mostly off-road and will cross the Whau River on a new purpose-built bridge (which will stand alongside the existing rail bridge) - now under construction as seen in the images to the right.

It will also connect with the Te Whau Pathway, which follows the west side of the Whau River in Avondale, and other local walking and cycling routes.

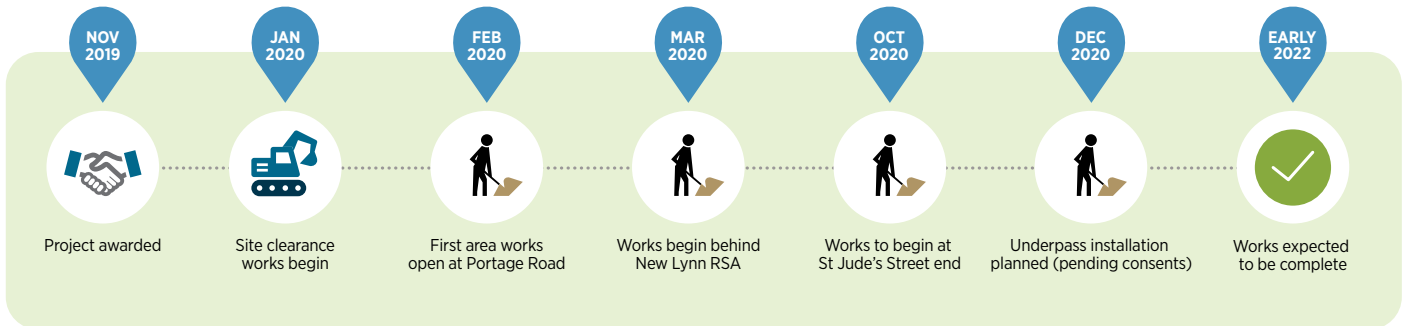


Artist's impression of the new shared path alongside the railway line.



Timeline

As Auckland's population grows, we need to provide more choices and find ways to make it easier and safer for people to walk or ride a bike in our city.



Work progress update

Construction firm Dempsey Wood have been contracted to carry out the project, with work beginning earlier this year.

While there may have been delays to the project due to the COVID-19 lock-down in March and April, the team have been working hard to get the project programme back on track.

- A time-lapse camera, set up behind the Huckleberry store on Portage Road, shows huge progress on the new bridge across the Whau River tributary.
- We are also working on the path extension behind the New Lynn RSA (opposite Lynn Mall) where the new path will connect directly opposite the New Lynn Rail Station. See the progress photograph over the page.
- Over the coming months, work areas will be opening up on Veronica Street (New Lynn), St Georges Road (Avondale), in Chalmers Reserve and at/near Avondale Rail Station.
- By late December, when works are expected to be in full-swing, our workforce will have swelled to around 100 people.

Time-lapse view of construction at the new Whau River crossing near Portage Road. What you can see is the new temporary staging bridge, which has been built to support the cranes in building the permanent new bridge to the right – immediately next to the railway bridge. The rusty-red tubes you see will create the pile foundations for the new bridge.

Whau Bridge: 3.22pm 19/2/2020



Whau Bridge: 4.00pm 12/6/2020



Artist's impression of the completed Whau Bridge



Works underway behind the New Lynn RSA on the corner of Hetana Street and Totara Avenue – undertaking the very first concrete pour as part of the Project in May 2020.

Whau fish recovery

Prior to starting any construction works in the vicinity of the Whau River tributary nearest our work site, our team undertook a recovery mission to recover and relocate native fish and eels. In January 2020, we set out with traps and electric fishing equipment to ‘sweep’ the waterway for fish life.

In all, 120 creatures were found in the small area of stream around our work site. 23 banded kōkopu and 97 eels, including three juvenile short-fin eels, were located. These species are native to NZ’s ecosystem and a vital part of the healthy recovery of the Whau River system.



The eels and fish were collected in buckets (as shown) and transported further along the river where they were released in a similar habitat which would be unaffected by any disruption of the tributary during works.



For more information on the project visit:

[AT.govt.nz/projects-roadworks/new-lynn-to-avondale-shared-path](https://at.govt.nz/projects-roadworks/new-lynn-to-avondale-shared-path).

You can contact Auckland Transport on **09 355 3553** or email **projects@at.govt.nz**