



Project Update

AMETI Phase One Project Update

4 May 2012

Work underway on busway bridge

Proof drilling on Ellerslie Panmure Highway has commenced ready for the arrival of a much larger 65 tonne drilling rig on Monday. This rig will start drilling for the 50 metre long piles needed to support the abutment of the new busway bridge. The very hard basalt rock originating from lava flows from the last Mt Wellington eruption, is only a few metres deep and overlays soft material, so 24 long piles are needed to reach strong sandstone rock 50 metres below. One of these piles will need to be done at night later this month - noisy work, and we will provide further information closer to the time.

Work is also starting on the new abutment wall approaches for the busway bridge on the east side of the railway. Work is ongoing at nights over the next week or so with Ellerslie Panmure Highway closed eastbound, to temporarily strengthen the existing bridge, so part of its abutment walls under the footpath can be removed to construct the new bridge.

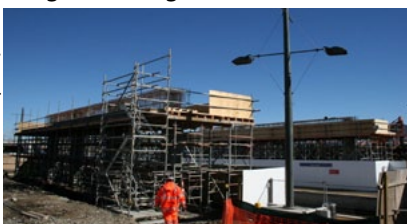


Busway bridge east abutment ready to start retaining wall.

Pedestrian Plaza

The new 20 metre wide plaza is taking shape with supporting columns in place. Ten 19 metre long beams are being prefabricated off-site and will be brought in at night in about a week's time to be placed on the columns across the tracks.

The plaza should be available for pedestrians to get more easily from one platform to the other within the next two months.



Pedestrian Plaza ready for concrete and beams.

Underground Services Progress

There has been work since early January trenching a new route for the critical underground services that currently run under the north footpath of Ellerslie Panmure Highway rail overbridge. This work to divert services to the south side is nearly complete, meaning the existing footpath can be demolished and services removed to allow room for the piling and abutment construction for the new busway bridge to safely continue. The temporary footpath in the closed traffic lane will be maintained until an alternative route is available across the new Mountain Rd bridge and/or the new pedestrian plaza.

Noisy works and vibration

Excavation continues, with rock breaking equipment being used next to Panmure Station for the covered box the new road will run through. This is about 50% complete and is progressing well.



Left: Complex arrangement of underground utilities with combined services trench.

To assist in moving very hard basalt rock, controlled minor blasting will be carried out about once or twice a week. This is quieter than rock breaking, however nearby properties may feel a small vibration. It will be carried out mid-morning between scheduled trains, pedestrians may be asked to wait a few minutes before entering Mountwell Crescent, the station platforms and possibly the Ellerslie Panmure Highway footpath near the station. There will be no delay to trains or for people catching them.

Mountain Road Bridge



The new Mountain Road Bridge is taking shape, with the concrete now on the bridge deck.



The approaches to Mountain Road Bridge are now in the process of being stabilised.

Demolition of Spotlight

The old Spotlight building is in the process of being demolished to make way for the new alignment where Mountain Road meets Jellicoe Road.



Jellicoe Road nightwork

The work to facilitate removal of the power poles on the western side of Jellicoe Road has progressed over the last two weeks and will continue for approximately three more weeks.

This will enable the next section of Mountain Road works to commence, from the new Mountain Road Bridge we are currently constructing across to where Jellicoe Road meets Pleasant View Road.

Please be assured all works are noise monitored to meet with compliance standards, however we would like to thank residents for their patience while we carry out this work.



Park and Ride facility

The new Park and Ride facility on Mountain Road is now operating. Seven native Pohutakawa were relocated to the rain gardens in the Park and Ride allowing the trees to be retained after being moved for the realignment of Mountain Road.



Give us your feedback: We are committed to keeping residents, businesses and commuters informed of the progress on AMETI and welcome any feedback or suggestions you may have. Contact Greg Horne on 09 355 3553.