

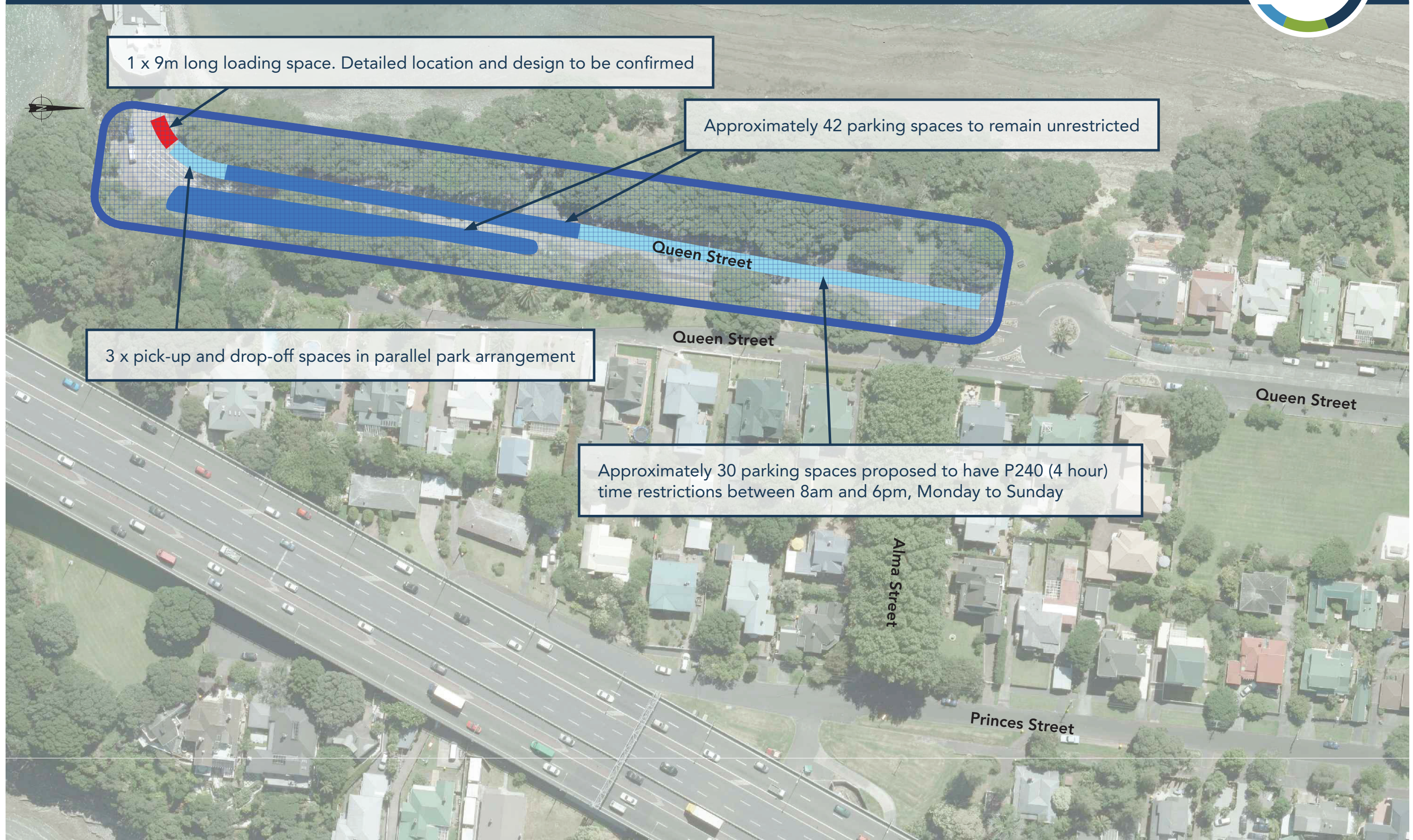
Northcote Point Proposed Parking Scheme

Area Overview Map



Northcote Point Proposed Parking Scheme

AREA 1: Wharf



Northcote Point Proposed Parking Scheme

AREA 2: Residential – Option A



Time restricted parking spaces to be P60 (1 hour)
between 8am and 6pm, Monday to Sunday

To remain: existing Authorised Vehicles
Only At All Times, Permit Holders Only

4 x P60 parking spaces

5 x P60 parking spaces

5 x P60 parking spaces

9 x P60 parking spaces

4 x P60 parking spaces

5 x P60 parking spaces

5 x P60 parking spaces

5 x P60 parking spaces

5 x P60 parking spaces

To remain: existing No Stopping At All
Times on southern side of Alma Street



Northcote Point Proposed Parking Scheme

AREA 2: Residential – Option B



To be removed: existing Authorised Vehicles
Only At All Times, Permit Holder Only

Residential parking zone with parking restrictions:

- All parking within the area will have P60 (1 hour) time restrictions between 8am and 6pm, Monday to Sunday.
- Residents will be able to apply for parking permits which exempt their vehicles from the time restrictions. One-day permits for visitors will also be available.

To remain: existing No Stopping At All
Times on southern side of Alma Street



Northcote Point Proposed Parking Scheme

AREA 3: Northcote Point Shops



Time restricted parking spaces to be between 8am and 6pm, Monday to Sunday

4 x P180 (3 hour) parking spaces

16 x P180 (3 hour) parking spaces

To remain: all existing restrictions

12 x P180 (3 hour) parking spaces

