

# Auckland Transport Quarterly Indicators Report 2015/16

June 2016

**1. Executive summary****2. External indicators****3. Performance by Strategic Theme**

3.1 Prioritise rapid, high frequency public transport

3.2 Transform and elevate customer focus and experience

3.3 Build network optimisation and resilience

3.4 Ensure a sustainable funding model

3.5 Develop creative, adaptive, innovative implementation

## 1 Executive summary

### SOI performance summary



Twelve SOI measures have met their year end performance targets, thirteen measures have exceeded their target, three measures have not met their target and one measure is not yet available.

The following are the three measures which have not meet their year end performance targets:

- 1) Fatalities and serious injury crashes on the local road network  
Reasons / explanations are detailed in page 10 of this quarterly report
- 2) Annual number of cycling trips in designated areas in Auckland (all day)  
Reasons / explanations are detailed in page 11 of this quarterly report
- 3) Travel times on key freight routes (Great South Road north bound)  
Reasons / explanations are detailed in page 11 of this quarterly report

- On target to exceed performance measure (more than 2.5% above target)
- On target to meet performance measure (within +/- 2.5% of target)
- Not on target to meet performance measure (more than 2.5% below target)

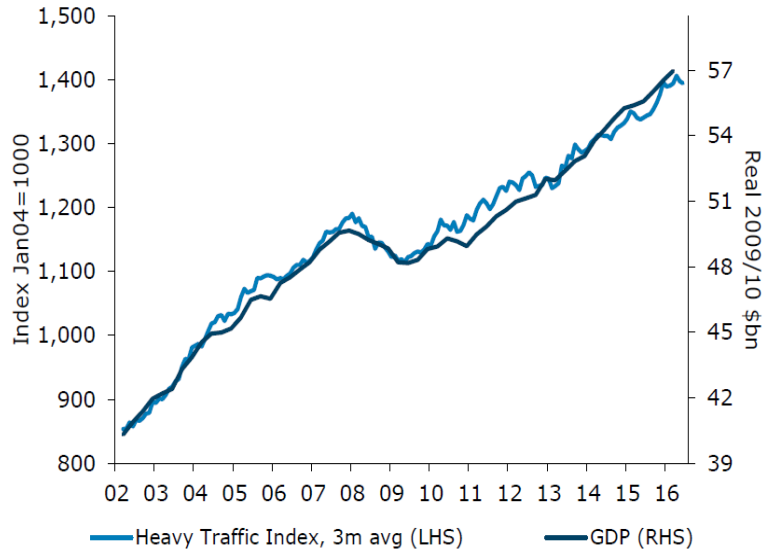
■ Data not available

**1. Executive summary****2. External indicators****3. Performance by Strategic Theme**

- 3.1 Prioritise rapid, high frequency public transport
- 3.2 Transform and elevate customer focus and experience
- 3.3 Build network optimisation and resilience
- 3.4 Ensure a sustainable funding model
- 3.5 Develop creative, adaptive, innovative implementation

## 2. External indicators

### 2.1 ANZ Truckometer

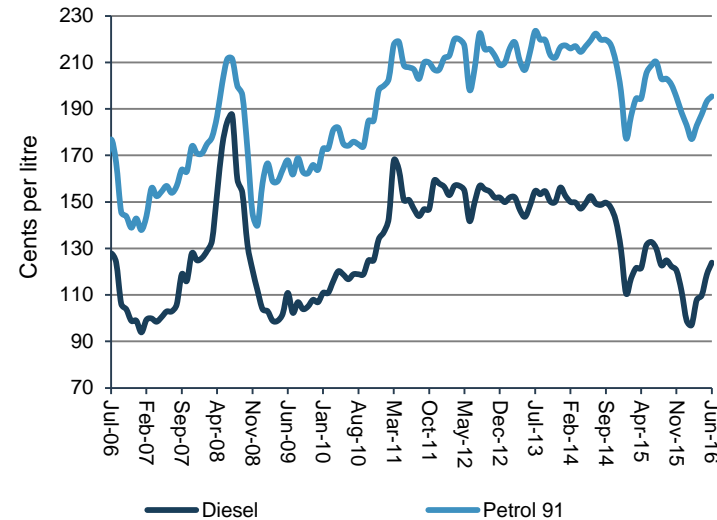


The ANZ Truckometer uses NZTA traffic data as an indicator of national economic activity. The index rose 4.7% in the month of June (seasonally adjusted), unwinding its falls in April and May to make for a flat quarter. The index accordingly suggests Q2 GDP growth was weaker than that seen in Q1, but the index has been volatile lately.

Source: ANZ Truckometer

Source: ANZ, NZ Transport Agency, Statistics NZ

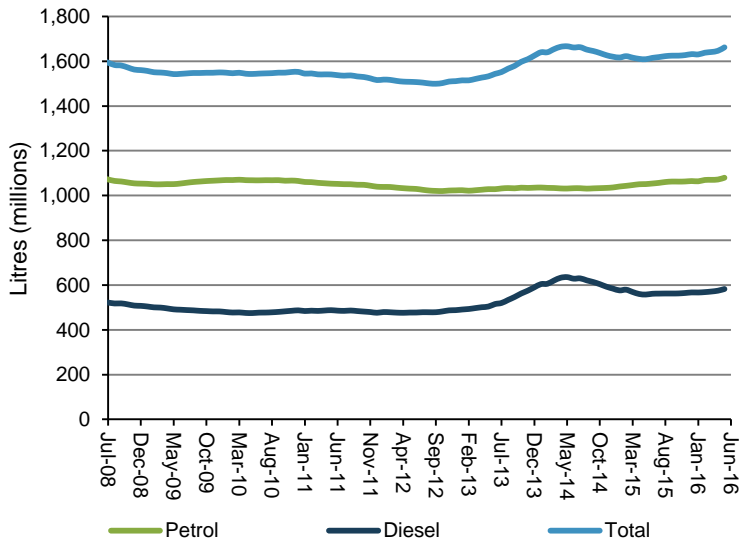
### 2.2 Monthly fuel prices



In May 2016 petrol prices have increased by 2.9% and diesel prices have increased by 8.1% compared to April 2016.

Source: Ministry of Business, Employment and Innovation

### 2.3 Auckland fuel sales

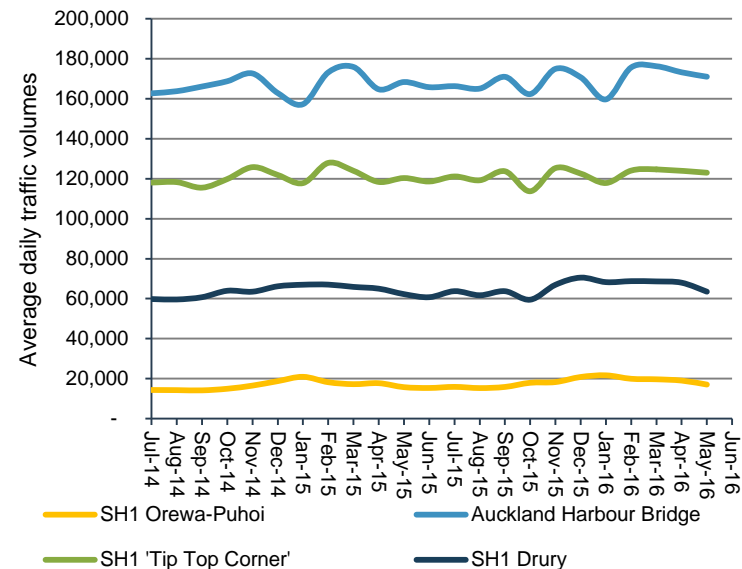


Total petrol sales for the year to May 2016 were 11.5% higher than May 2015.

Petrol sales in May 2016 were 9.0% higher and diesel sales were 16.4% higher than May 2015.

Source: Auckland Council fuel tax returns

### 2.4 State Highway average daily traffic volumes

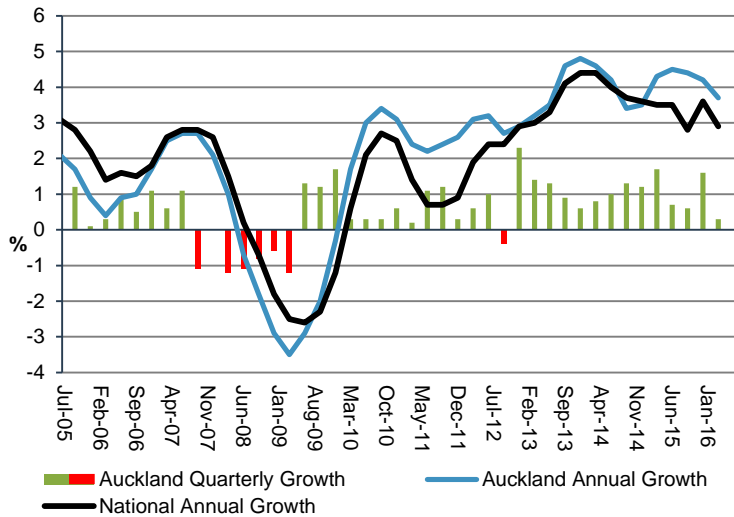


Compared to May 2015, average daily traffic volumes in May 2016 were up 2% on SH1 at Drury, up 2% on SH1 at Tip Top Corner, up 2% on the Auckland Harbour Bridge and up 8% on SH1 between Orewa and Puhoi.

Source: NZTA Data

2. External indicators

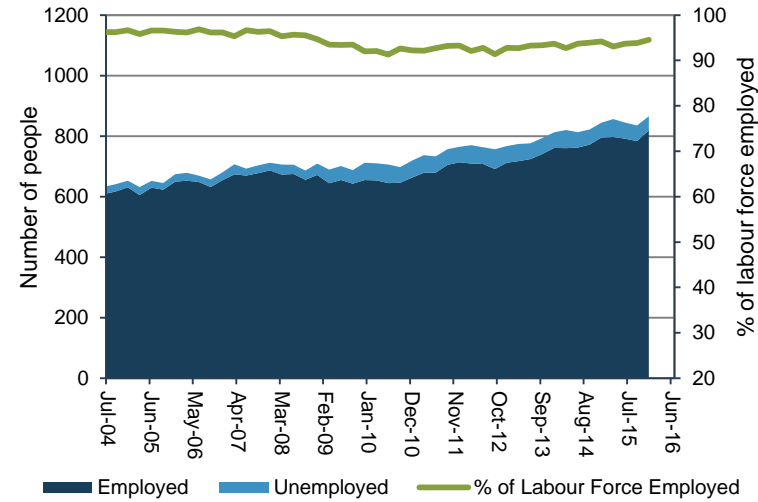
2.5 Auckland economic activity



Economic activity increased 0.3% in the March 2016 quarter. The year-on-year growth rate for Auckland was 3.7%. Nationally, annual average growth was 2.9%.

Source: ANZ Regional Trends: Auckland

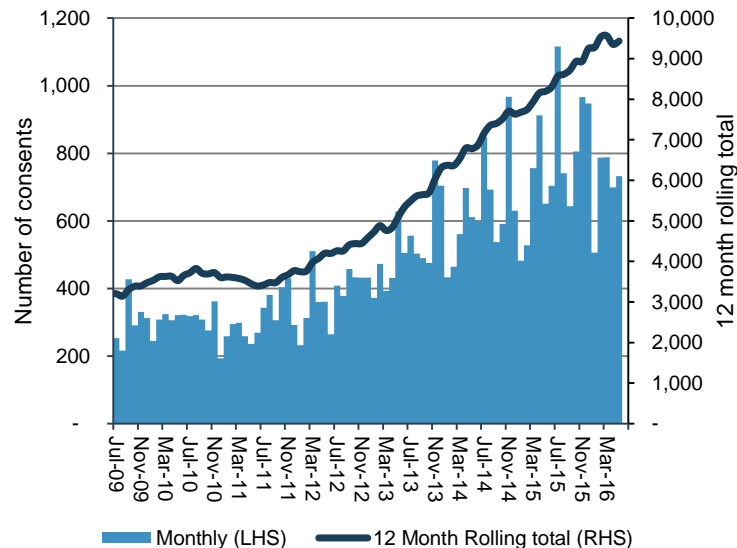
2.6 Auckland labour force



Auckland employment in the March 2016 quarter totalled 820,300, up 2.9% on March 2015. Unemployment totalled 57,600 in the March 2016 quarter, down 3.0% from March 2015, but up 22.6% from December 2015.

Source: Statistics NZ Quarterly Labour Force Survey

2.7 Auckland dwelling consents issued

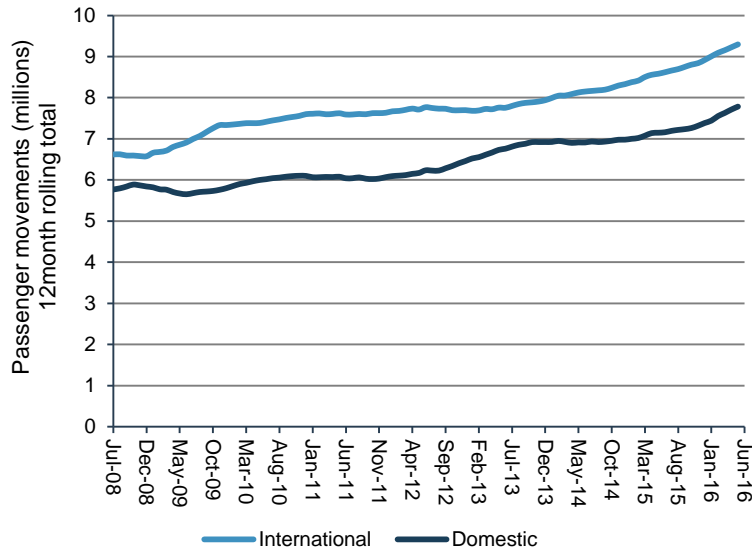


732 consents were issued in May 2016, up 12.4% on May 2015. The 12 month rolling total to May 2016 was 15.1% higher than the May 2015 figure.

Source: Statistics NZ

2. External Indicators

2.8 Auckland Airport passenger movements

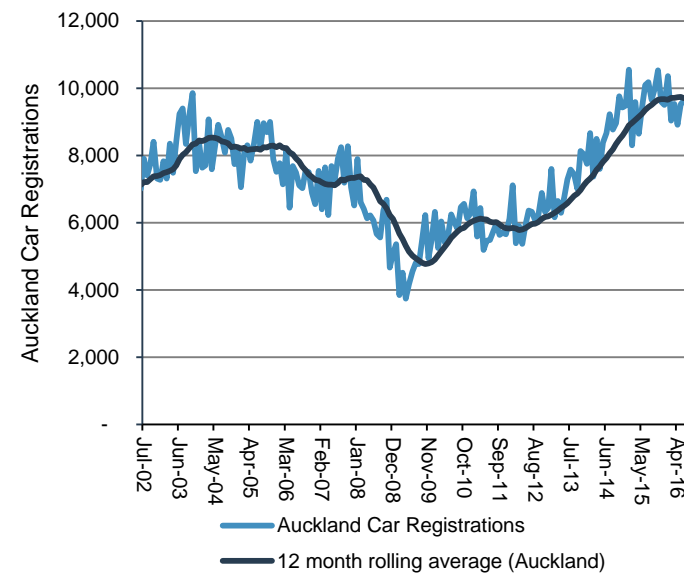


A total of 17.0 million passenger movements were recorded through Auckland airport in the year to May 2016, an increase of 8.6% on the year to May 2015.

In the month of May 2016, international passenger numbers were up 8.3% and domestic passengers up 8.9% compared to May 2015.

Source: AIAL monthly traffic report

2.9 Auckland car registrations



This graph shows the number of cars first registered to an Auckland postal code.

There were 9,634 Auckland car registrations in June 2016, 4.6% less than June 2015. Car registrations outside of Auckland increased 1.8% over this time period.

Source: NZTA Vehicle registration Centre

## **1. Executive Summary**

## **2. External Indicators**

## **3. Performance by Strategic Theme**

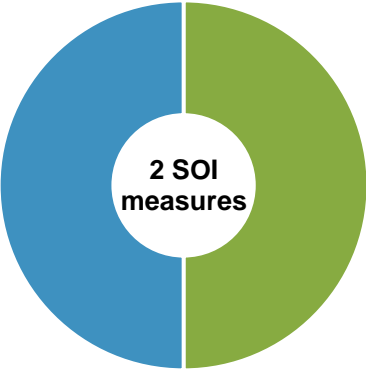
- 3.1 Prioritise rapid, high frequency public transport
- 3.2 Transform and elevate customer focus and experience
- 3.3 Build network optimisation and resilience
- 3.4 Ensure a sustainable funding model
- 3.5 Develop creative, adaptive, innovative implementation



### 3.1 Prioritise rapid, high frequency public transport

Strategic theme	Measure	SOI 2015/16 Year End Target	Quarter 1	Quarter 2	Quarter 3	Quarter 4	Measure Commentary
Prioritise rapid, high frequency public transport	Total public transport boardings	84.47 million	●	●	●	●	Patronage growth has tracked slightly below the amount required to meet the year end performance measure, but is within 2.5% of the target.
	Boardings on rapid or frequent network (rail, busway, FTN bus)	Increase at faster rate than total boardings	●	●	●	●	RTN + FTN boardings are growing significantly faster than total boardings.

#### Performance and future outlook



**2 SOI measures**

**Total public transport boardings**

Total public transport boardings are slightly below the amount required to meet the year end SOI target. However the 12 month rolling total is within 2.5% of the target.

January 2016 = 81,538,217  
 February 2016 = 81,563,597  
 March 2016 = 81,415,701  
 June 2016 = 82,904,160

**Boardings on rapid and frequent services**

Quarter 4 saw significantly higher RTN + FTN growth rates than total boardings.

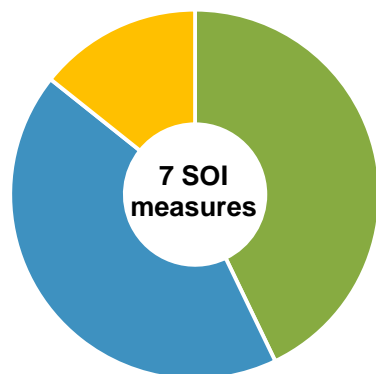
- On target to exceed performance measure (more than 2.5% above target)
- On target to meet performance measure (within +/- 2.5% of target)
- Not on target to meet performance measure (more than 2.5% below target)

■ Data not available

### 3.2 Transform and elevate customer focus and experience

Strategic theme	Measure	SOI 2015/16 Year End Target	Quarter 1	Quarter 2	Quarter 3	Quarter 4	Measure Commentary
Transform and elevate customer focus and experience	Percentage of public transport passengers satisfied with their public transport service	83%	●	●	●	●	Overall satisfaction with public transport services (84%) is consistent with the June 2015 result (84%).
	Percentage of residents satisfied with the quality of roads in the Auckland region	70%	●	●	●	●	Satisfaction with the quality of roads in Auckland (69%) is consistent with the June 2015 result (69%).
	Percentage of residents satisfied with the quality of footpaths in the Auckland region	65%	●	●	●	●	Satisfaction with the quality of footpaths in Auckland (65%) is consistent with the June 2015 result (65%).
	Percentage of residents satisfied with road safety in the Auckland region	60%	●	●	●	●	Satisfaction with road safety in Auckland (65%) is consistent with the June 2015 result (65%).
	PT punctuality (weighted average across all modes)	92%	●	●	●	●	Public transport weighted average punctuality was 94.6%.
	Change from the previous financial year in the number of fatalities and serious injury crashes on the local road network, expressed as a number	Reduce by at least 9	●	●	●	●	There has been an increase in deaths and serious injuries in Auckland. See below for detailed commentary.
	Percentage of customer service requests relating to roads and footpaths which receive a response within specified time frames	85%	●	●	●	●	June 2016 YTD average = 88% which is 3% above the 85% SOI target. Please note that this result does not yet include all customer service requests.

#### Performance and future outlook



#### Deaths and serious injuries (DSI)

The local road DSI (deaths plus serious injuries) SOI target is 390. The actual rolling 12 month total for local road DSI for the SOI period is significantly higher at 537.

Fatal and serious crashes on the local road network have increased significantly across the year, particularly in urban areas. In response, Auckland Transport has been supporting NZ Police's targeted enforcement initiatives with education and awareness promotions in urban environments targeting speed, alcohol, pedestrian and cycle safety, restraint use, and young drivers. Equally, Auckland Transport has been implementing a number of speed management, pedestrian safety, intersection safety and general road safety improvements in both urban and rural high-risk environments.

Auckland Transport has been supporting NZ Police's targeted enforcement initiatives with education and awareness campaigns where possible and is beginning to implement recommendations from the stock-take of road safety performance completed in May 2015.

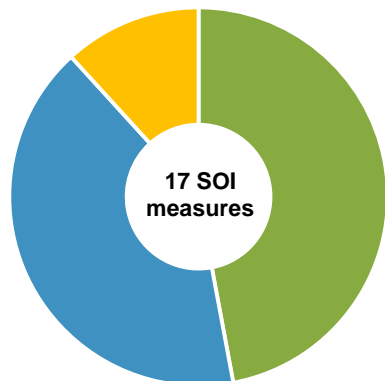
- On target to exceed performance measure (more than 2.5% above target)
- On target to meet performance measure (within +/- 2.5% of target)
- Not on target to meet performance measure (more than 2.5% below target)

■ Data not available

### 3.3 Build network optimisation and resilience

Strategic theme	Measure	SOI 2015/16 Year End Target	Quarter 1	Quarter 2	Quarter 3	Quarter 4	Measure Commentary	
Build network optimisation and resilience	Arterial road productivity	54% of the ideal achieved	●	●	●	●	The 12 month rolling average to June 2016 is 60.0%, which is 6% above the SOI target.	
	New cycleways added to regional cycle network	7.4 km	●	●	●	●	11.8km of new cycleways were built between July 2015 and June 2016, which is 4.4km above the SOI target.	
	Annual number of cycling trips in designated areas in Auckland (all day)	1.1 million	●	●	●	●	The 12 month rolling total to June 2016 (995,828) is below target.	
	Travel times on key freight routes	Maintain baseline travel times for the 85th percentile	● ● ● ● ● ● ● ● ● ●	● ● ● ● ● ● ● ● ● ●	● ● ● ● ● ● ● ● ● ●	● ● ● ● ● ● ● ● ● ●	Baseline travel times have been maintained on nine of the ten key freight routes monitored under Auckland Transport's SOI.	
	Road maintenance standards (ride quality) as measured by smooth travel exposure (STE) for all urban and rural roads	Urban 83%				●	●	The 2015/16 result: 87%
		Rural 93%				●	●	The 2015/16 result: 96%
	Percentage of the sealed local road network that is resurfaced	8%		●	●	●	●	8.2% of the network has been resurfaced / rehabilitated in the July - June 2016 period. This compares to the SOI target of 8%.
	Percentage of footpaths in acceptable condition (as defined by AT's AMP)	99%				●	●	Data for this measure is collected on an annual basis through a network condition survey. The 2015/16 result is 99.5%.

#### Performance and future outlook



**Travel time on key freight routes:** Baseline travel times have been maintained on nine of the ten key freight routes monitored under Auckland Transport's SOI. The exception is Great South Road northbound. Actions have been undertaken to better understand and solve delays on this route, including installing CCTV cameras, undertaking traffic signal improvements and detailed investigation on queuing issues on the route.


**Cycle trips in designated areas:** Cycling counts remain significantly below the numbers required to meet AT's SOI target of 1.1m.

January 2016 = 941,466  
 February 2016 = 947,413  
 March 2016 = 954,153  
 June 2016 = 995,828

### 3.4 Ensure a sustainable funding model

Strategic theme	Measure	SOI 2015/16 Year End Target	Quarter 1	Quarter 2	Quarter 3	Quarter 4	Measure Commentary
Ensure a sustainable funding model	PT farebox recovery	46-48%	●	●	●	●	Total public transport farebox recovery in May 2016 was 51.2%.

#### Performance and future outlook



**PT farebox recovery**

Combined farebox recovery has increased from 46.9% in May 2015 to 51.2% in May 2016. This indicates farebox revenue is increasing higher than service costs.

Results for individual modes are as follows:  
 Ferry 81.4%  
 Bus 52.3%  
 Rail 38.6%

Please note that there is a one month time lag for farebox recovery information. As such, this report analyses May 2016 results against the SOI target.

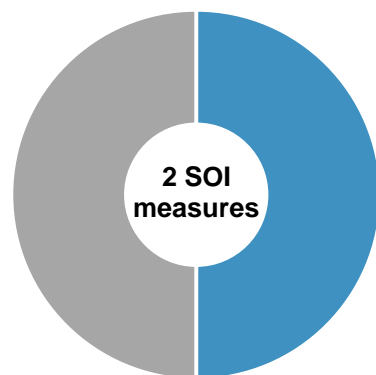
- On target to exceed performance measure (more than 2.5% above target)
- On target to meet performance measure (within +/- 2.5% of target)
- Not on target to meet performance measure (more than 2.5% below target)

■ Data not available

### 3.5 Develop creative , adaptive, innovative implementation

Strategic theme	Measure	SOI 2015/16 Year End Target	Quarter 1	Quarter 2	Quarter 3	Quarter 4	Measure Commentary
Develop creative, adaptive, innovative implementation	Parking occupancy rates (peak 4-hour, on street)	70% - 90%	●	●	●	●	May 12 month rolling average: 89.1%.
	Number of car trips avoided through travel planning initiatives	17,500					2015/16 result will be available in late July 2016.

#### Performance and future outlook



#### Parking occupancy rates (peak 4-hour, on street)

12 month rolling average parking occupancy has increased from 85.7% in May 2015 to 89.1% in May 2016. The current result is at the top end of the SOI target range.

- On target to exceed performance measure (more than 2.5% above target)
- On target to met performance measure (within +/- 2.5% of target)
- Not on target to meet performance measure (more than 2.5% below target)

■ Data not available