



Harbourmaster

Harbourmaster's Direction 1-16 Downtown Ferry Terminal Basin

Foreword

Following an incident involving wash from propulsion systems, and periods where access to wharves within the Downtown Ferry Basin has been obstructed for prolonged periods due to increasing size and number of vessels using the basin, the Auckland Harbourmaster issues this Direction.

In line with the Port and Harbour Safety Code the Harbourmaster has assessed the situation and taken steps to help prevent further incidents. To this end this Direction aims to set down periods where arrival of large ships and/or use of tugs within the Downtown Ferry Terminal Basin cause concern, and to prohibit restrict this activity. The Direction also sets out a clear procedure for the testing or use of any Propulsion or Manoeuvring equipment of large vessel within the basin.

This direction replaces Harbourmaster Direction 1-15.

Preamble

These directions are issued under section 33F of the Maritime Transport Act 1994. They:

- I. Define the limits of the "Downtown Ferry Terminal Basin".
- II. Prescribe the manner in which vessels must navigate within this zone.

Definitions

"Harbourmaster" means a Harbourmaster which is appointed under Section 33D of the Maritime Transport Act 1974.

"Manoeuvring equipment" includes any equipment used to assist a vessel with berthing, unberthing, holding station or any similar activity or equipment.

"Passenger ferry" means a commercial vessel operated as part of a scheduled service registered with Auckland Transport, regardless of whether operating on such service at the time.

"Pilot" in relation to any ship, means any person not being the master or a member of the crew of the ship who has conduct of the ship.



Harbourmaster

“Propulsion equipment” includes any machinery used to propel a vessel.

“Tug” means any vessel used to assist in the berthing of another vessel by means of being connected to or pushing on the other vessel.

“Vessel” has the same meaning as a “ship” in the Maritime Transport Act 1994.

Application

This direction applies to all vessels, with the exception of passenger ferries.

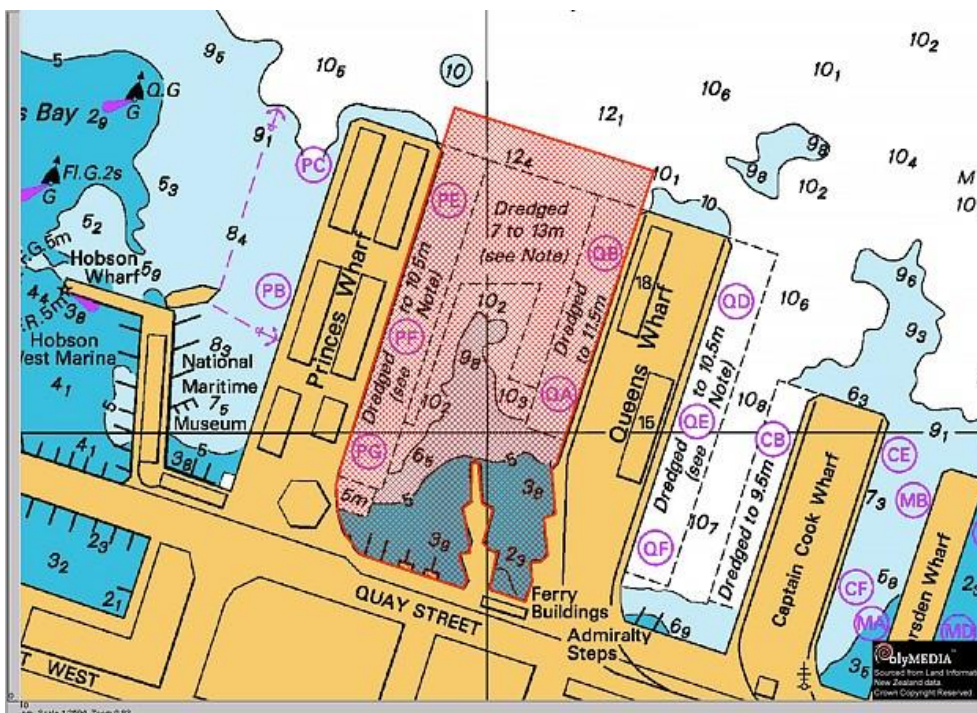
Exemptions

The Harbourmaster may, upon written application, issue an exemption for a time period, vessel or specific class of vessels. This will be done on a case-by-case basis, and only where the overall harbour safety standards can be maintained.

Location

The Downtown Ferry Terminal Basin includes all waters contained between Princes and Queens Wharves and extends to 50 metres north of the northern end of the wharves.

(shaded red in the chart below)





Harbourmaster

Purpose

To ensure the safety of navigation by:

- i) Removing conflict between competing user groups at certain busy periods.
- ii) Ensuring no unexpected wash creates a hazard to vessels manoeuvring.

Conduct of vessels

- 1) No vessel of 500 gross tonnage or greater shall operate, test or otherwise use any manoeuvring or propulsion equipment without a pilot onboard unless the vessel has the prior written permission of the Harbourmaster.
- 2) The Master and/or Pilot of a vessel of 500 gross tonnage or greater when testing propulsion or manoeuvring equipment within the Downtown Ferry Terminal Basin shall broadcast an “all ships” warning on VHF Ch 12 prior to undertaking the testing, and a further message to confirm completion of the test.
- 3) The Master and/or Pilot of a vessel of 500 gross tonnage or greater having completed a berthing manoeuvre, or about to commence a departure manoeuvre within the Down Town Ferry Terminal Basin shall broadcast an “all ships” message on VHF Ch 12 stating the fact.
- 4) Between the hours of 07:30 to 09:00 hours and 16:30 to 18:00 hours daily (excluding Saturday and Sunday);
 - a) No vessel of 500 gross tonnage or greater shall;
 - i) Manoeuvre within the downtown ferry terminal basin,
 - ii) Operate any propulsion or manoeuvring equipment.

Limitations

Every vessel shall observe maritime rules, bylaws and codes:

- i) Maritime Rule 22; and
- ii) Auckland Council Navigation Safety Bylaws; and
- iii) Harbour Master Directions.

Harbourmaster's Office

Ph: (09) 362 0397, email: Harbourmaster@AT.govt.nz