

Franklin Road Improvements

Community Liaison Group meeting

27 September 2016



Contractor Update

Franklin Road Upgrades

Water Main Renewals and Wastewater Separation Works



Stage 1 works – Review Sept 2016

- Successful Site establishment in Weld St next to motorway
- Service locations completed from Wellington St to Napier St.
- Excavation pits for the installation of new water main pipes
- Letter drop for night works on Monday and Tuesday, for new valve installation
- New sewer main marked out on Franklin Road, above Wellington Street
- Contacting residents along Collingwood Road and Franklin Road, regarding sewer separation.
- Dawn blessing on 29 September

Stage 1 works – Planned Oct 2016

- Construction of new waste water line from existing manhole in Wellington Street to first proposed manhole in Franklin Rd
- Complete water main installation and Vector ducting between Wellington St and Napier St.
- Preparation for water main installation between Napier St to bottom of Franklin Rd
- Night works to install new valve installation
- Working to obtain building consent for private sewer separation works on 43, 45, 47, 49 51 and 53
- Contacting residents along Collingwood Road and Franklin Road, regarding sewer separation

Sewer connection



Open cut section; from footpath to new manhole in road.

Drill section behind traffic barriers, drilling downhill on Franklin Road

Items to note.

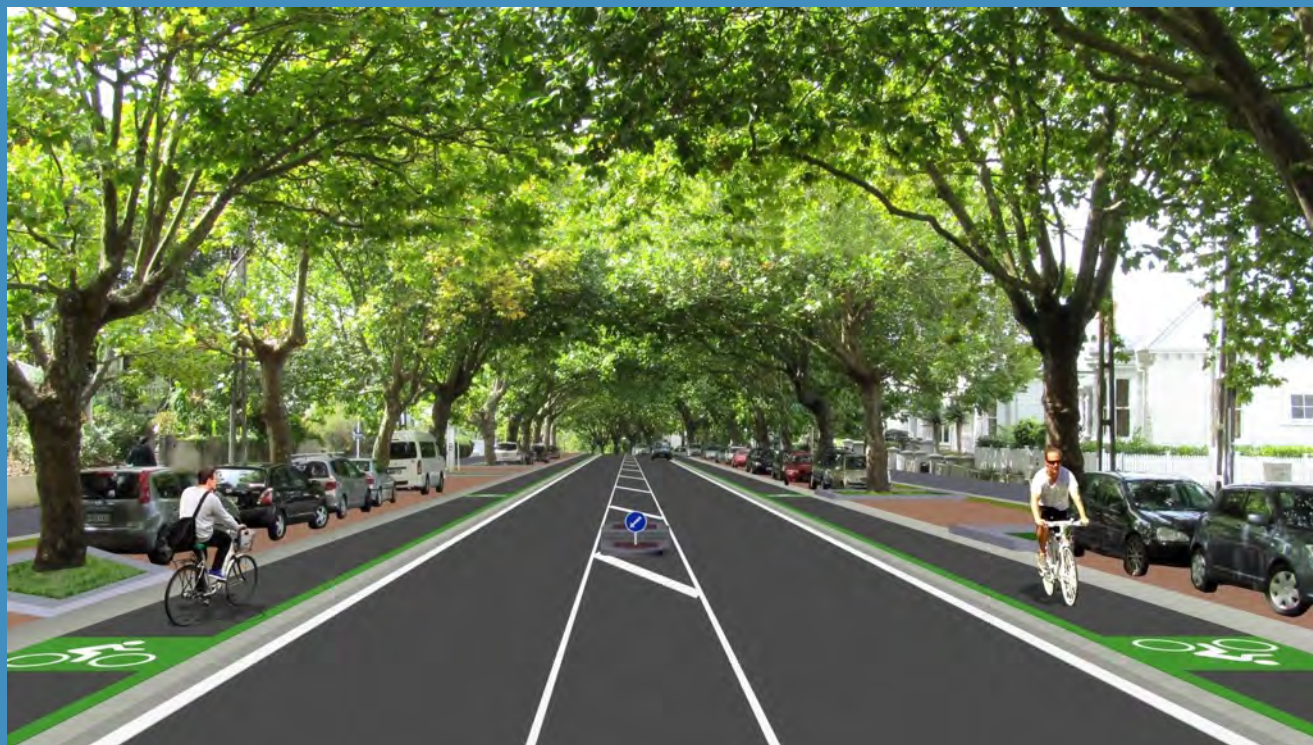
- Open cut section from footpath to new manhole in franklin Road
- Footpath will be required to be closed during open cut section.
- In drill section, drill rig will remain behind barriers and drill downhill to new manhole.
- Site will be secured with fences overnight.

DURATION OF PROPOSED WORKS

- START: 03.10.2016
- COMPLETED: 03.11.2016
- WEEKS : 6 WEEKS

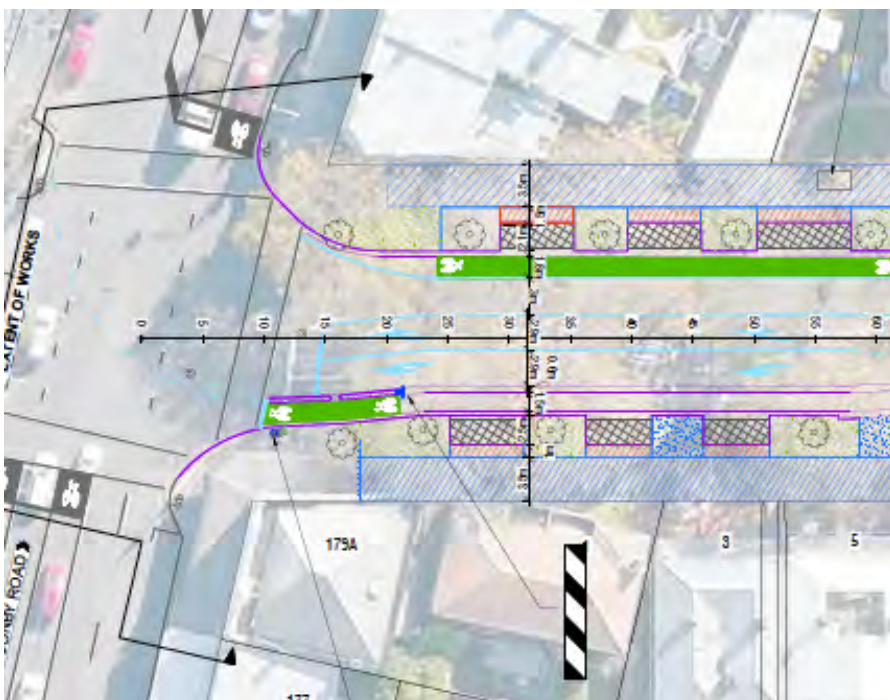


AT Design Update

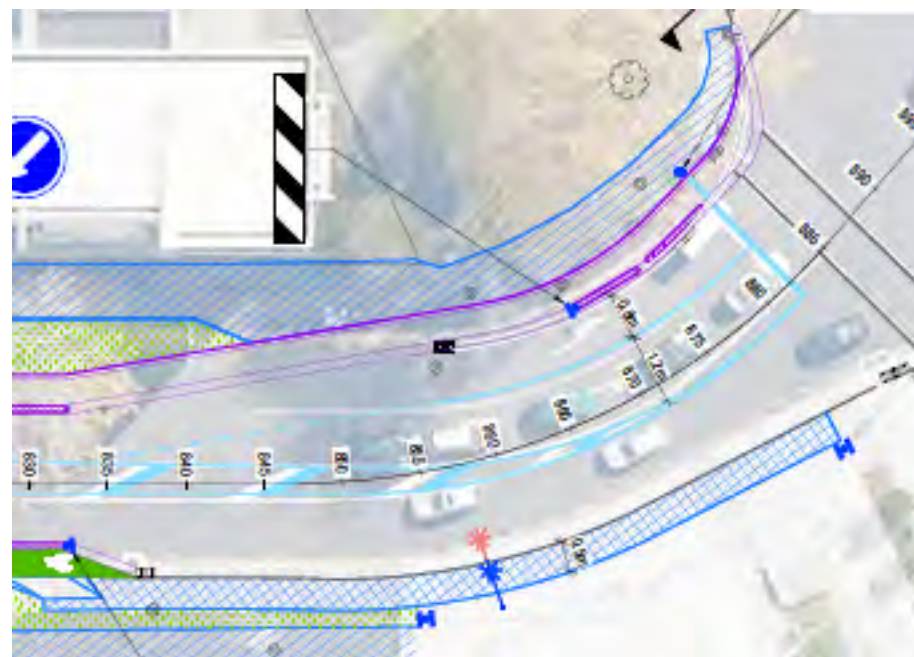


Intersections

Ponsonby Road

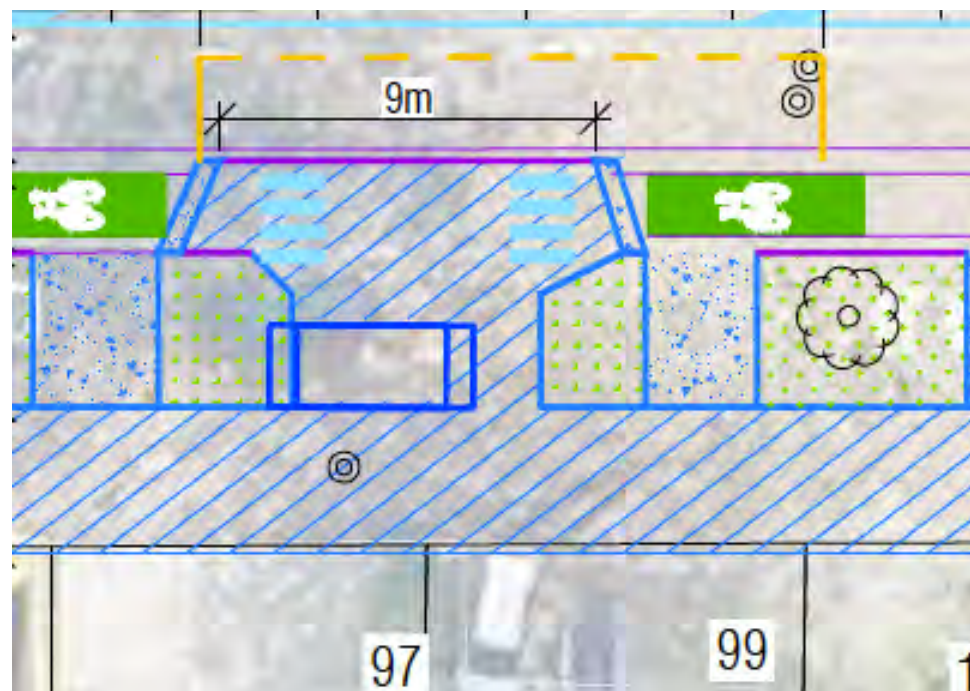


Victoria St



New bus stop

- New Bus Stop outside Nos 97 and 99 Franklin Road
- Will include a bus shelter



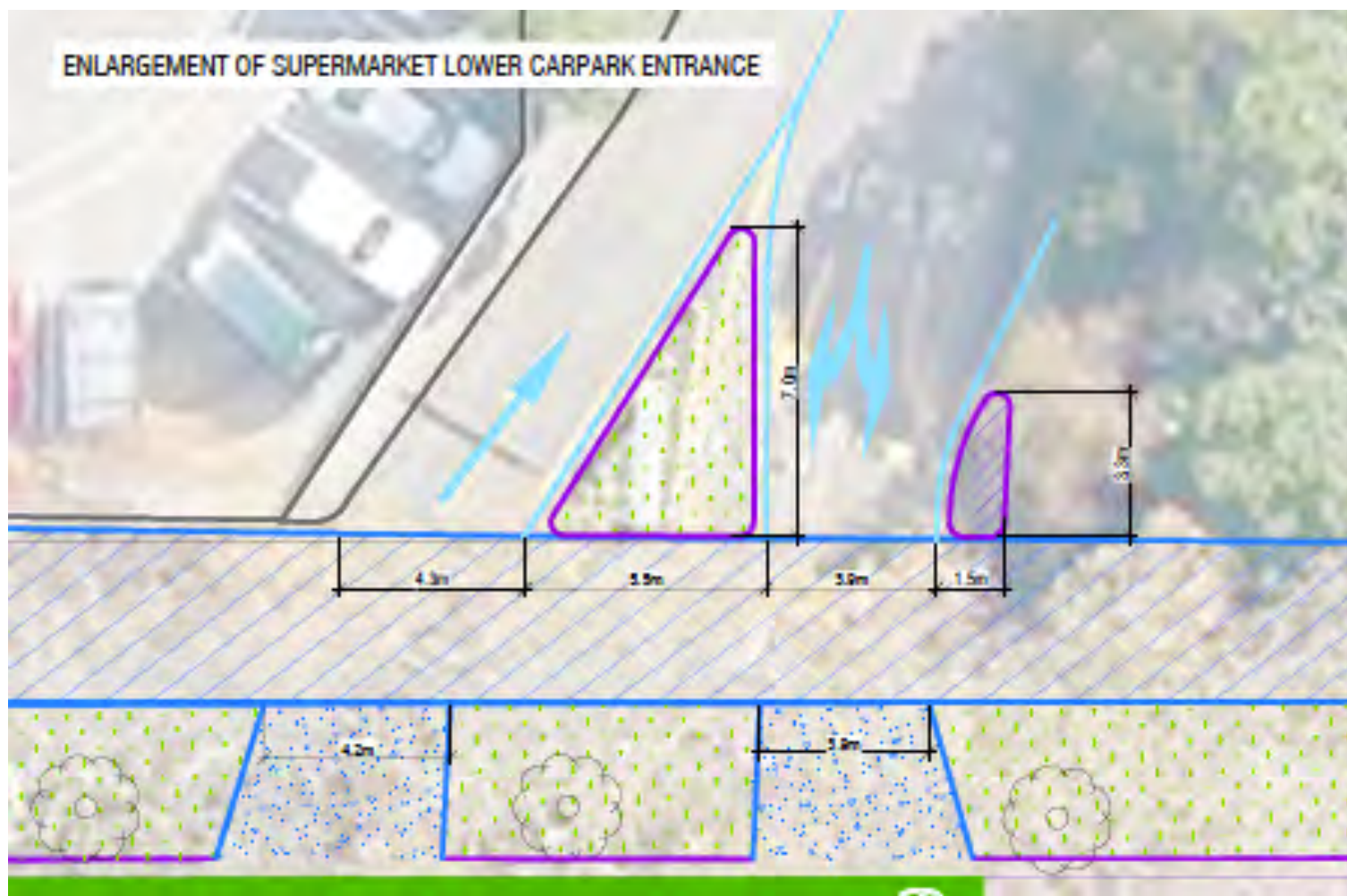
Redesign of driveways

- The locations of driveways needs to be correct
- Some owners are already in the process of planning to redevelop their properties
- We are collecting information from owners who have redevelopment plans **in the next two years only**. These owners still need to get permits, but the location of the new driveway can be included in the works
- Anything planned after that will have to go through the usual Council building and resource consent process.
- We need this info to make sure street lighting poles are placed correctly and to enable property owners to apply for permits in time for construction (April /May 2017)

Relocation of carparks

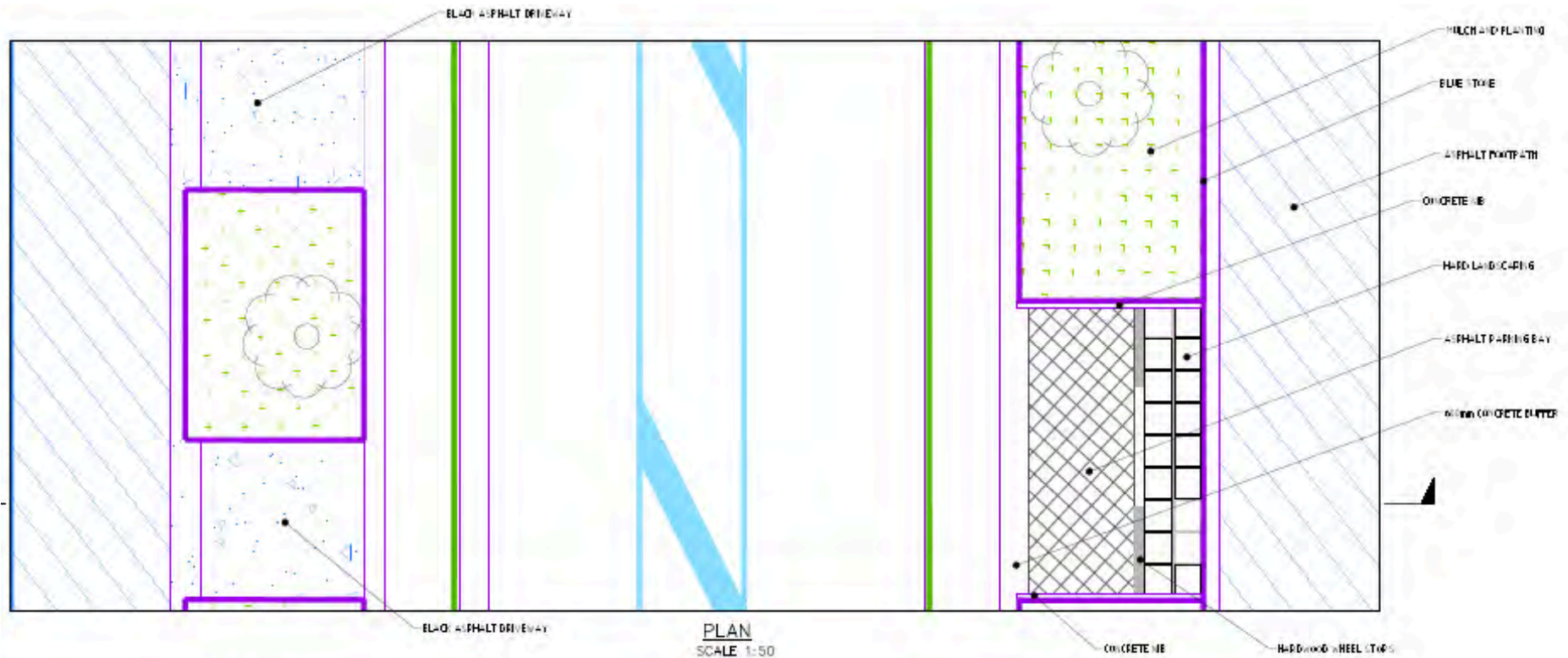
- The current P5 carparks outside the daycare on Wellington St will be relocated to the other side of the road
- The new zebra crossing on Wellington St provides a safe crossing place for parents and children
- Two existing carparks on England St (RHS) near the intersection with Franklin Rd will be removed
- Consultation will start next week with those properties directly affected by the new bus stop, and parking reconfiguration

New World entrance



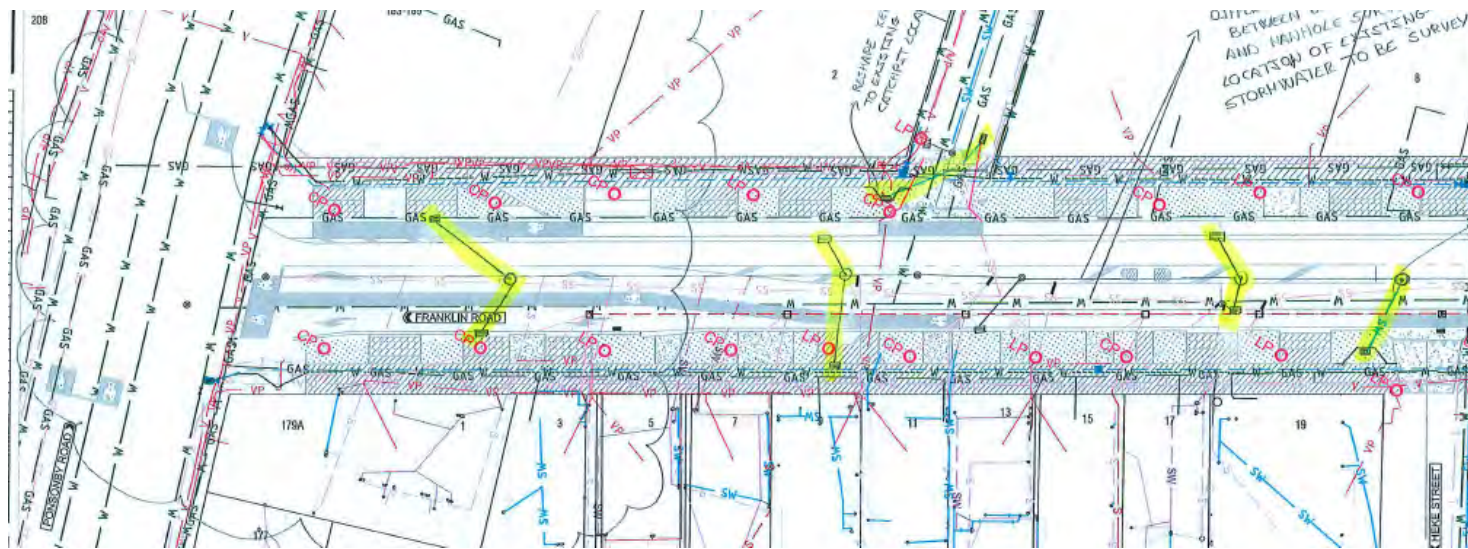
Landscape Design

- Parking bay material to be Asphaltic Concrete (AC)
- Tree pit material - Mulch



Stormwater Design

- Design includes more than **40 new catch pits (fitted with tetra traps)**, which is a significant improvement from the current situation (8 catchpits)
- Upgrade SW line from Wellington St To Victoria St
- SW line separation from sewer line at top end



Any Issues?

Thank you.

