

Manukau Bus Station

September 2017



Construction update

The new Manukau Bus Station is making great progress.

The roof is on and the façade is almost completely glassed in. Our contractor can now start work on the interior fit-out while adding the finishing details to the exterior of the building.

Outside the immediate construction zone, the most obvious activities are the lane closure on Putney Way for construction of footpaths, rain gardens and landscaping. Once the south side of Putney Way is finished, in conjunction with Panuku Development Auckland,

we will undertake a major upgrade of the rest of the street between Osterley Way and Davies Avenue.

Over the next two months, we will also be creating the new bus entry from Osterley Way and completing some necessary services connections. This may cause some disruption for pedestrians, but we will do what we can to minimise any inconvenience. Signs for alternative routes will be clearly displayed.



Manukau Bus Station Site early September 2017, new bus entry being constructed

Health & safety during construction

Complying with the Health and Safety at Work Act 2015 (HSWA), New Zealand's workplace health and safety law is very important to Auckland Transport. Health and safety isn't just about compliance, it's about getting everyone: contractors, AT staff, and the general public, home healthy and safe.

When undertaking a project like the Manukau Bus Station health and safety is considered from several points of view.

A construction site can be a dangerous place with high risk activities such as working at height, working around heavy and moving machinery, working below ground and working in different seasons and climates. Wind and rain, can play havoc and pose real risks.

The construction site incorporates a lot of safety features to mitigate the risks and all operations on site are heavily controlled. AT only employs contractors that have acceptable, approved health and safety systems and a

For more information

Email Rob.Faata@at.govt.nz

Phone 021 539 436 or visit AT.govt.nz/manukaustation



site specific health and safety plan is developed for each project. Independent health and safety auditors verify that the health and safety plans are strictly adhered to and that all regulations are complied with.

Once complete, the Manukau Bus Station will be an operation that puts people and operating vehicles together. That is the nature of a bus station. There will be travellers, workers and passersby who will be close to buses, cars, trucks and bicycles.

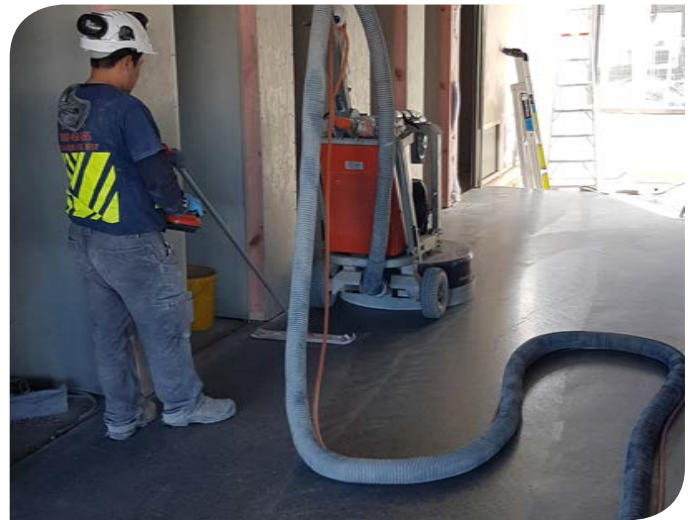
There will be people with various disabilities using the facility and there is always a risk of anti-social behaviour. Natural events such as earthquakes and severe weather must be considered and the buildings need to be easily maintained so that they don't deteriorate and become unsafe.

Our designers have considered all of these issues and incorporated many safety features into the building and its surrounds to ensure everyone's wellbeing. Some of these features are:

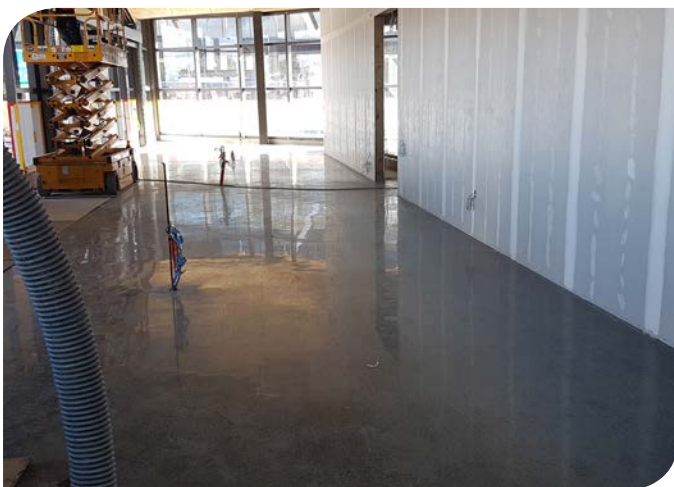
- Bus manoeuvring control system to control bus movement around the station and controlled access from the station concourse out to the bus bay boarding area. Doors will only open if there is a bus in its designated bay that is ready for boarding
- An open and unobstructed well-lit public space monitored via 64 surveillance cameras
- Large roof overhangs to provide weather protection at entry to the building and for bus boarding
- Minimal use of stairs
- Improved pedestrian crossings on the adjacent streets and improved street lighting.



Auckland Transport's Mark Hitchcock, Scott Keene and Sean Corbett look happy with progress. AT has seven retail spaces available for lease in the bus station



Robotic floor grind and polish machine making the bare concrete floor and producing a high-shine hard-wearing floor



The end result is shiny and slip resistant floor.



Scissor lift action. There more than 40 elevated work platforms on the site