

LENGTHEN EXISTING BUS STOP
(8AM TO 9.30AM, 2.30 TO 3.30PM,
SCHOOL DAYS ONLY)

REPLACE EXISTING 'P10, 8AM - 9AM, 3PM - 4PM,
MON - FRI' WITH NEW 'P10, 8AM - 9AM, 3PM -
4PM, SCHOOL DAYS ONLY' SIGNS

RELOCATE EXISTING BUS STOP SIGN AND
CHANGE OPERATION TIME (8AM TO 9.30AM,
2.30 TO 3.30PM, SCHOOL DAYS ONLY)

INSTALL SOLID WHITE LINE ON
FOOTPATH BEHIND KERB NEXT
TO BUS STOPS

INSTALL SOLID WHITE LINE ON
FOOTPATH BEHIND KERB NEXT
TO BUS STOPS

CHANGE OPERATION TIME ON BUS STOP
SIGNS TO 8AM TO 9.30AM, 2.30 TO
3.30PM, SCHOOL DAYS ONLY

LEGEND

- EXISTING KERB
- EXISTING ROADMARKING
- - - EXISTING ROADMARKING TO BE REMOVED
- NEW ROADMARKINGS
- ⊣ EXISTING SIGN
- ⊣ REMOVE EXISTING SIGN
- ⊣ PROPOSED SIGN
- DRIVEWAY



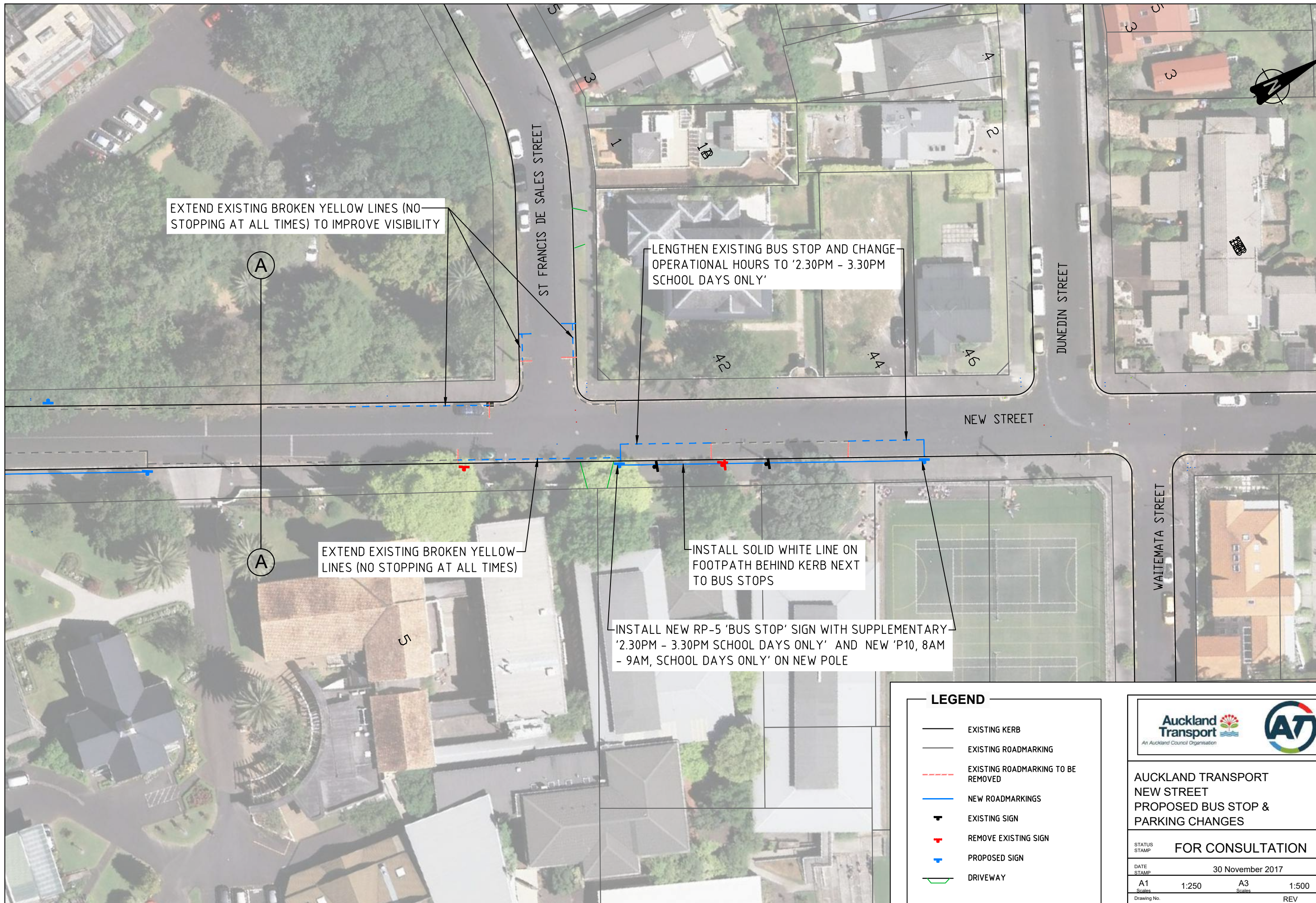
**AUCKLAND TRANSPORT
NEW STREET
PROPOSED BUS STOP &
PARKING CHANGES**

STATUS
STAMP **FOR CONSULTATION**

DATE
STAMP 30 November 2017

A1 1:250 A3 1:500

Drawing No. 001 REV A



EXTEND EXISTING BROKEN YELLOW LINES (NO STOPPING AT ALL TIMES) TO IMPROVE VISIBILITY

LENGTHEN EXISTING BUS STOP AND CHANGE OPERATIONAL HOURS TO '2.30PM - 3.30PM SCHOOL DAYS ONLY'

EXTEND EXISTING BROKEN YELLOW LINES (NO STOPPING AT ALL TIMES)

INSTALL SOLID WHITE LINE ON FOOTPATH BEHIND KERB NEXT TO BUS STOPS

INSTALL NEW RP-5 'BUS STOP' SIGN WITH SUPPLEMENTARY '2.30PM - 3.30PM SCHOOL DAYS ONLY' AND NEW 'P10, 8AM - 9AM, SCHOOL DAYS ONLY' ON NEW POLE

LEGEND

- EXISTING KERB
- EXISTING ROADMARKING
- EXISTING ROADMARKING TO BE REMOVED
- NEW ROADMARKINGS
- EXISTING SIGN
- REMOVE EXISTING SIGN
- PROPOSED SIGN
- DRIVEWAY



**AUCKLAND TRANSPORT
NEW STREET
PROPOSED BUS STOP &
PARKING CHANGES**

STATUS: **FOR CONSULTATION**

DATE: 30 November 2017

A1 1:250 A3 1:500

Drawing No. 002 REV A