

ORIGINAL SIZE A1
0 10 20 30 40 50 60 70 80 90 100 150 200mm
DO NOT SCALE - IF IN DOUBT, ASK



LEGEND

- TREE TO BE REMOVED
- RELOCATED STREETLIGHT
- NEW PRAM CROSSING
- NEW KERBLINE
- BROKEN YELLOW LINES "NO PARKING"
- NEW / RELOCATED SIGN
- NEW FOOTPATH
- VEHICLE CROSSING REINSTATEMENT



AUCKLAND TRANSPORT
REGIONAL FOOTPATH PROJECTS 17-18
HIBISCUS COAST HIGHWAY, OREWA
PROPOSED FOOTPATH PLAN
SHEET 1 OF 3

FOR CONSULTATION

Date Stamp 16/02/2018

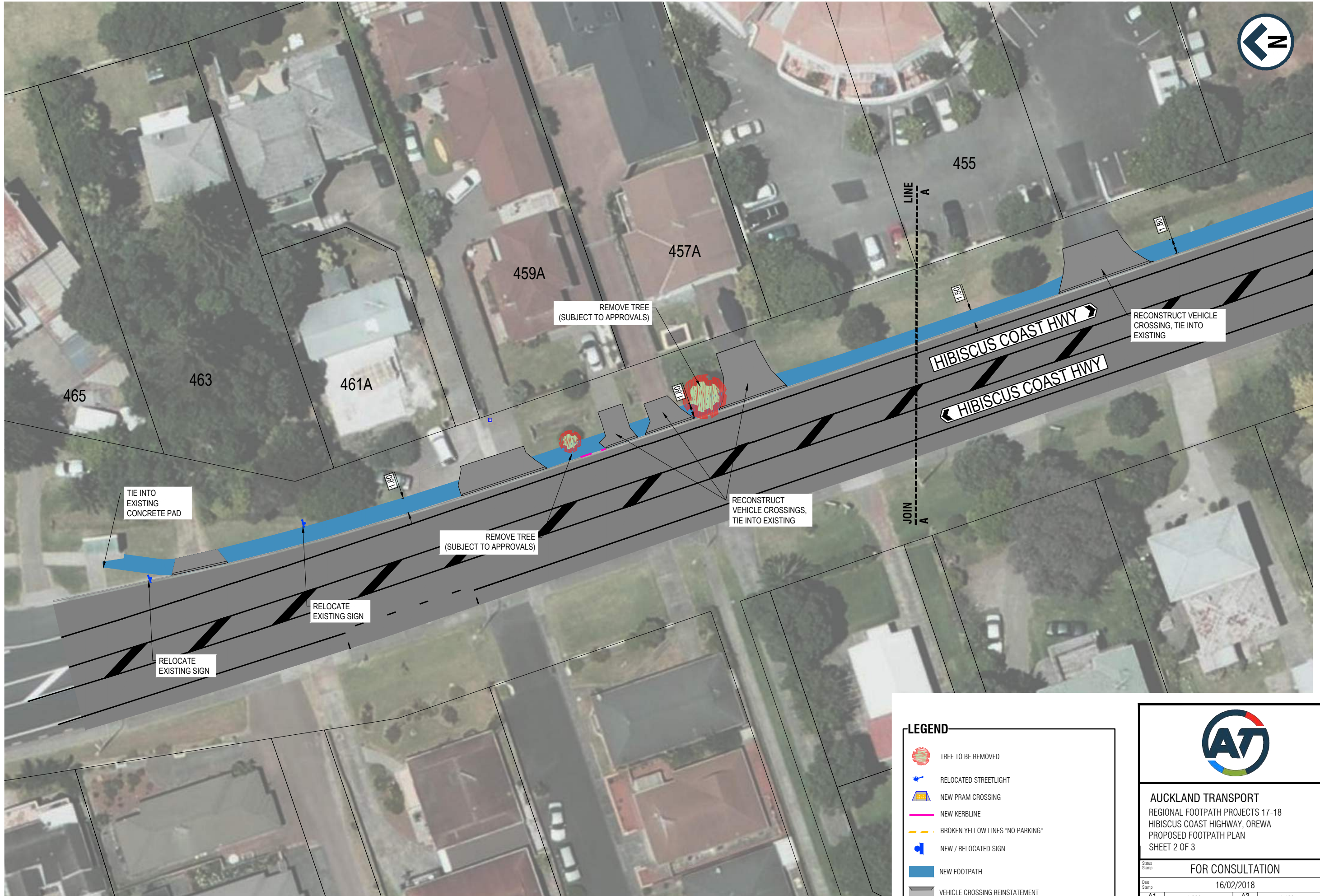
A1 Scales 1:500 A3 Scales 1:1000

Drawing No. NC-01-02-078-TRA-3000

Rev.

0

ORIGINAL SIZE A1
DO NOT SCALE - IF IN DOUBT, ASK



0 2 4 8 12
Full Size (A1) 1:200 ; Half Reduction (A3) 1:400
SCALE (m)

LEGEND

- TREE TO BE REMOVED
- RELOCATED STREETLIGHT
- NEW PRAM CROSSING
- NEW KERBLINE
- BROKEN YELLOW LINES "NO PARKING"
- NEW / RELOCATED SIGN
- NEW FOOTPATH
- VEHICLE CROSSING REINSTATEMENT



AUCKLAND TRANSPORT
REGIONAL FOOTPATH PROJECTS 17-18
HIBISCUS COAST HIGHWAY, OREWA
PROPOSED FOOTPATH PLAN
SHEET 2 OF 3

FOR CONSULTATION

Status Stamp

Date Stamp

16/02/2018

A1

1:200

A3

1:400

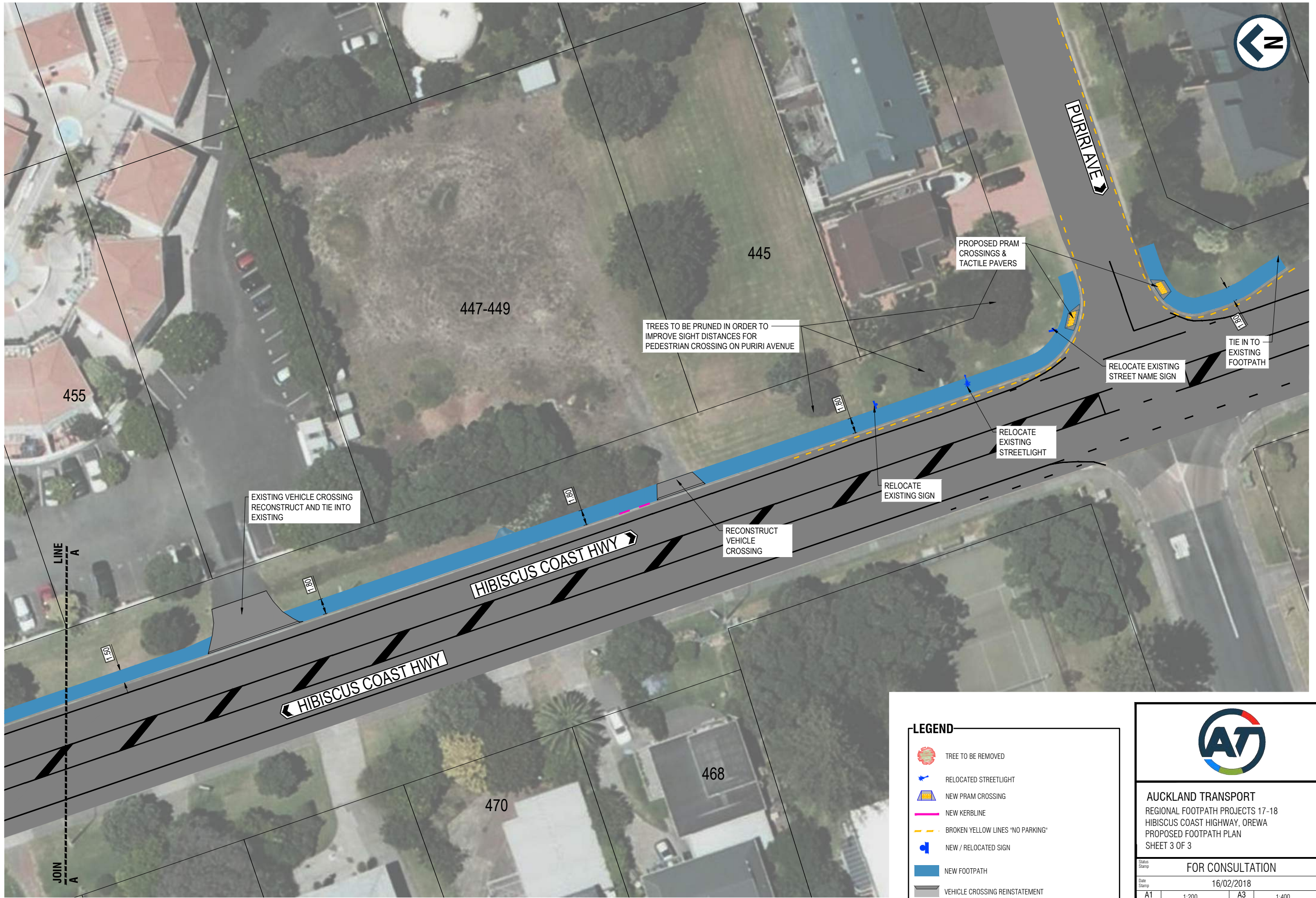
Drawing No.

NC-01-02-078-TRA-3001

Rev.

0

ORIGINAL SIZE A1
DO NOT SCALE - IF IN DOUBT, ASK



0 2 4 8 12
Full Size (A1) 1:200 ; Half Reduction (A3) 1:400
SCALE (m)

LEGEND

- TREE TO BE REMOVED
- RELOCATED STREETLIGHT
- NEW PRAM CROSSING
- NEW KERBLINE
- BROKEN YELLOW LINES "NO PARKING"
- NEW / RELOCATED SIGN
- NEW FOOTPATH
- VEHICLE CROSSING REINSTATEMENT



AUCKLAND TRANSPORT
REGIONAL FOOTPATH PROJECTS 17-18
HIBISCUS COAST HIGHWAY, OREWA
PROPOSED FOOTPATH PLAN
SHEET 3 OF 3

FOR CONSULTATION

Date Stamp 16/02/2018

A1 Scales 1:200 A3 Scales 1:400

Drawing No. NC-01-02-078-TRA-3002

Rev.

0