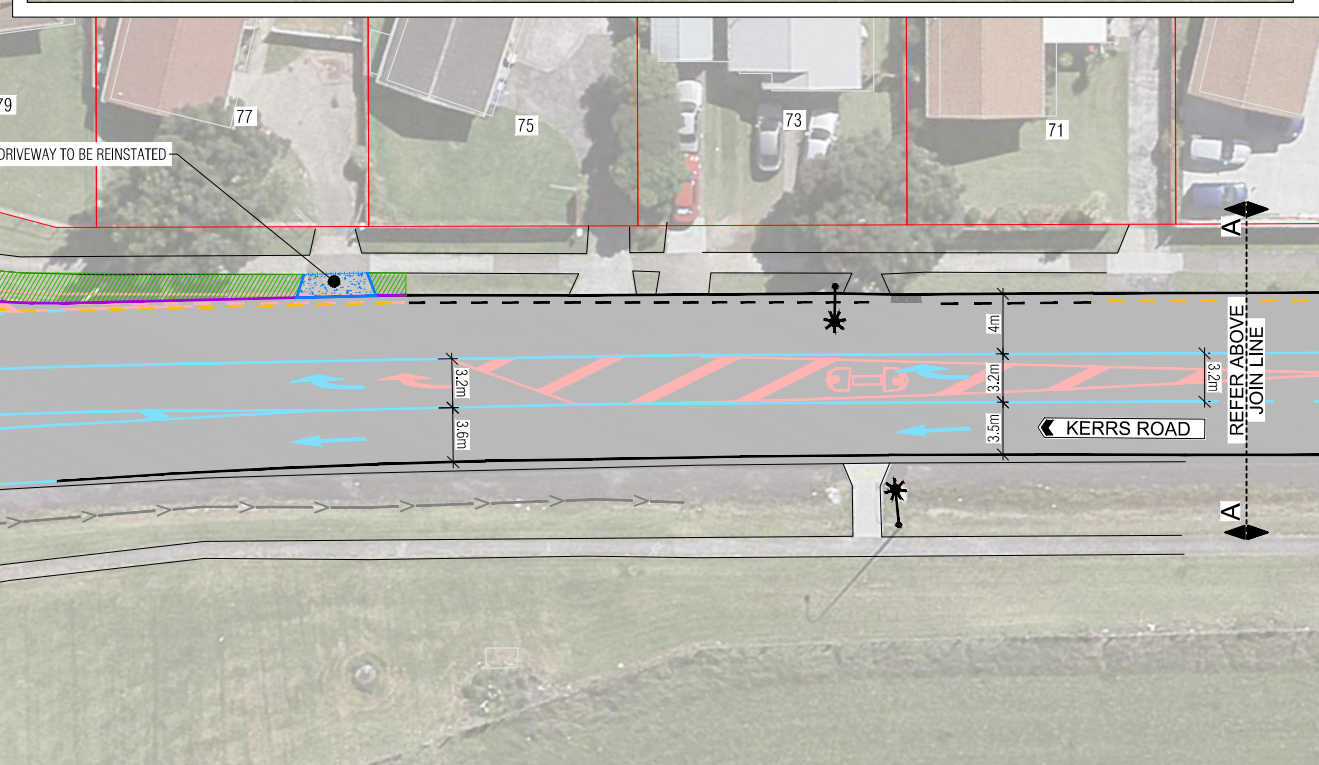
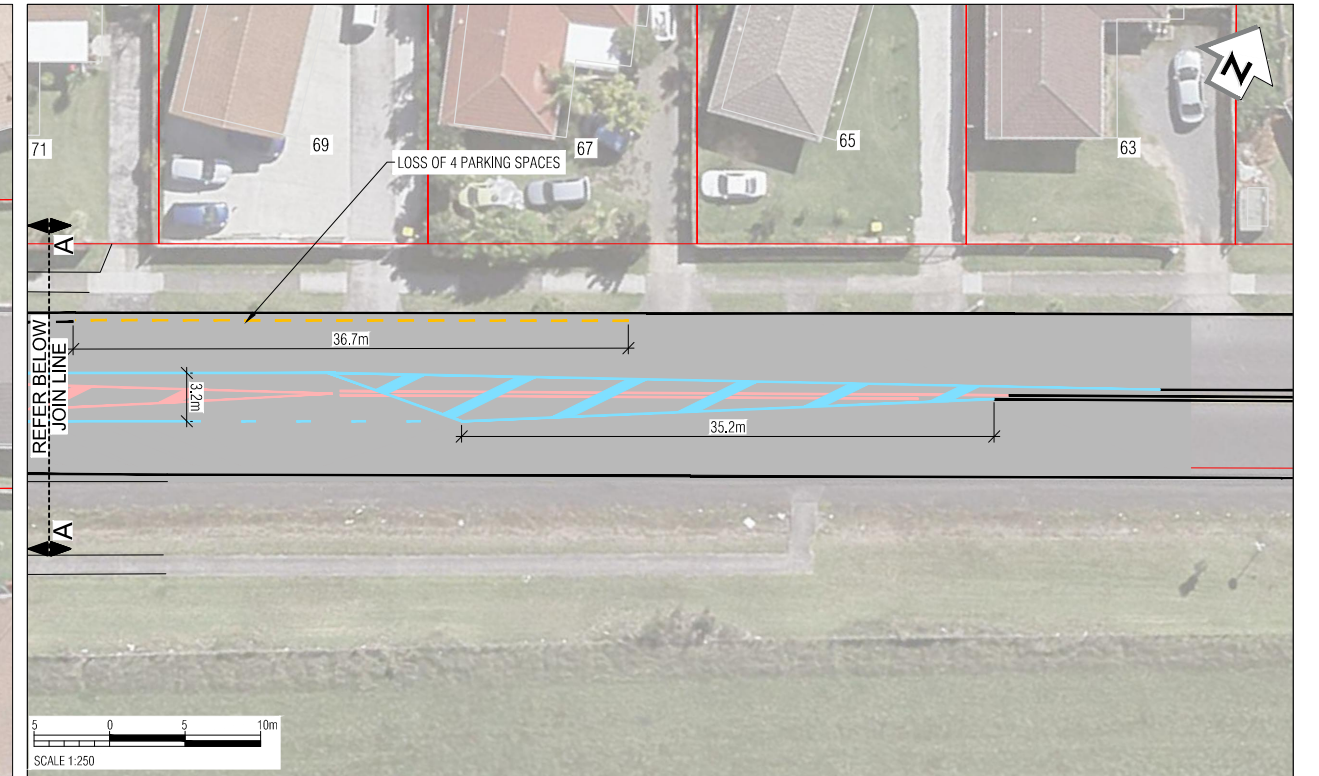
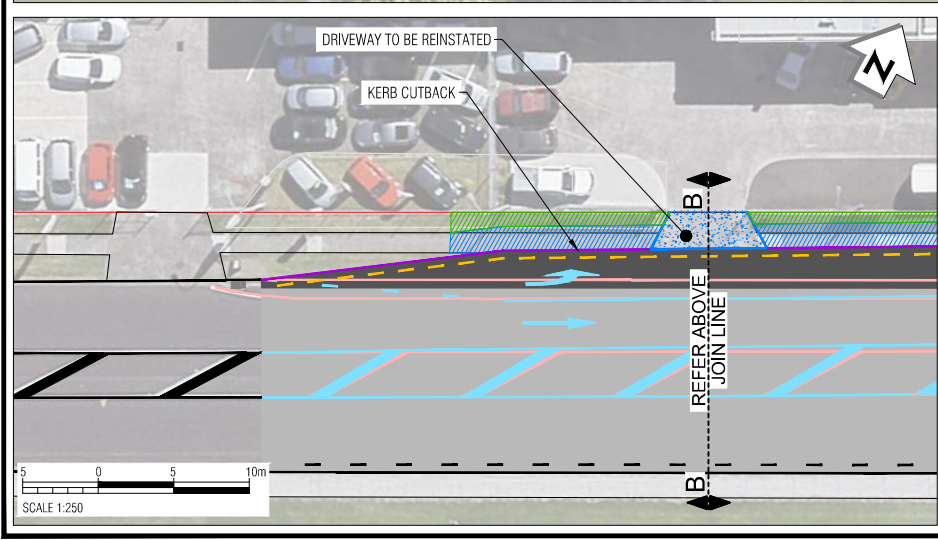
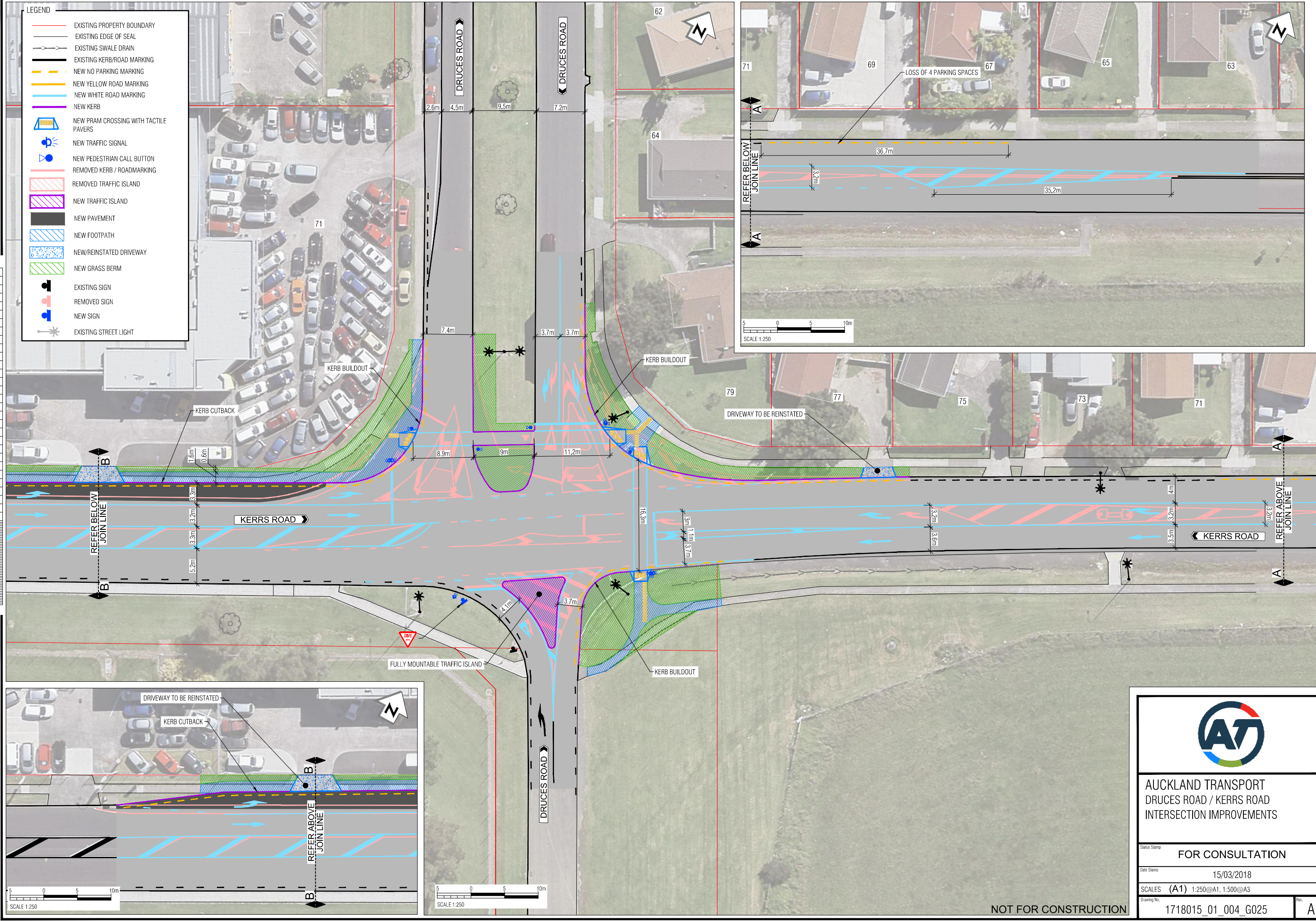


DO NOT SCALE - IF IN DOUBT, ASK

ORIGINAL SIZE A1

Last modified: Jan 20 2016 By

- LEGEND
- EXISTING PROPERTY BOUNDARY
 - EXISTING EDGE OF SEAL
 - EXISTING SWALE DRAIN
 - EXISTING KERB/ROAD MARKING
 - NEW NO PARKING MARKING
 - NEW YELLOW ROAD MARKING
 - NEW WHITE ROAD MARKING
 - NEW KERB
 - NEW PRAM CROSSING WITH TACTILE PAVERS
 - NEW TRAFFIC SIGNAL
 - NEW PEDESTRIAN CALL BUTTON
 - REMOVED KERB / ROADMARKING
 - REMOVED TRAFFIC ISLAND
 - NEW TRAFFIC ISLAND
 - NEW PAVEMENT
 - NEW FOOTPATH
 - NEW/REINSTATED DRIVEWAY
 - NEW GRASS BERM
 - EXISTING SIGN
 - REMOVED SIGN
 - NEW SIGN
 - EXISTING STREET LIGHT



AUCKLAND TRANSPORT
DRUCE'S ROAD / KERRS ROAD
INTERSECTION IMPROVEMENTS

Status Stamp	FOR CONSULTATION
Date Stamp	15/03/2018
SCALES	(A1) 1:250@A1, 1:500@A3
Drawing No.	1718015_01_004_G025
Rev.	A

NOT FOR CONSTRUCTION

\\nzak11s01\projects\2012 Onwards\Auckland Transport\805 09536 TTEP5\00 Job Folder\1718211-Druces Rd_Kerrs Rd Improve\5 0 CAD\CAD\1718015_01_004_G025