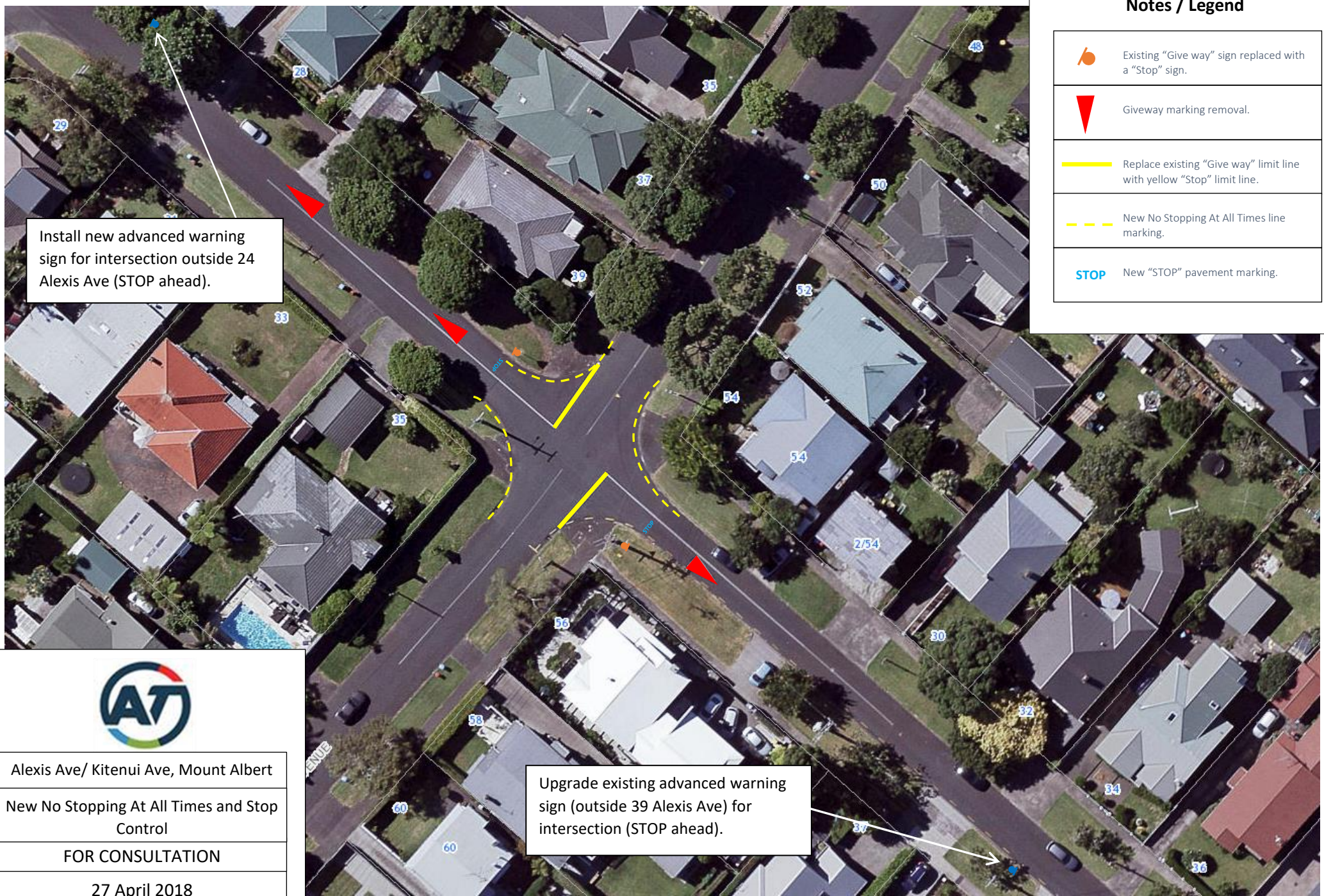


Notes / Legend

	Existing "Give way" sign replaced with a "Stop" sign.
	Giveaway marking removal.
	Replace existing "Give way" limit line with yellow "Stop" limit line.
	New No Stopping At All Times line marking.
	New "STOP" pavement marking.



Install new advanced warning sign for intersection outside 24 Alexis Ave (STOP ahead).

Upgrade existing advanced warning sign (outside 39 Alexis Ave) for intersection (STOP ahead).



Alexis Ave/ Kitenui Ave, Mount Albert
 New No Stopping At All Times and Stop Control
 FOR CONSULTATION
 27 April 2018