



Construction Phase Communication and Consultation Plan

AMETI Eastern Busway
Stage 1 –
Panmure to Pakuranga

April/2019



Document Details

Document name	Status	Document No.	Author
Construction Phase Communication and Consultation Plan (CCP)	Draft for Submission	AEB1-CR-2001	Tania Reynolds

Document History and Status

Revision	Date	Author	Reviewed by	Approved by	Status
1	25-02-19	T Reynolds	J Scott		Draft
2	22-03-19	C Reynolds	J Scott		Draft for Submission
3	18-04-19	H Davidson	O Seychell	J Weller	Final for Certification

Revision Details

Revision	Details
1	Initial Draft for Discussion.
2	Draft for Submission (incorporates comments from AT and has been reviewed by Jacobs against the Pre-Construction CCP)
3	Final for Certification (incorporates feedback from Auckland Council review 11-04-19 and 18-04-19)

Integrated Management Structure

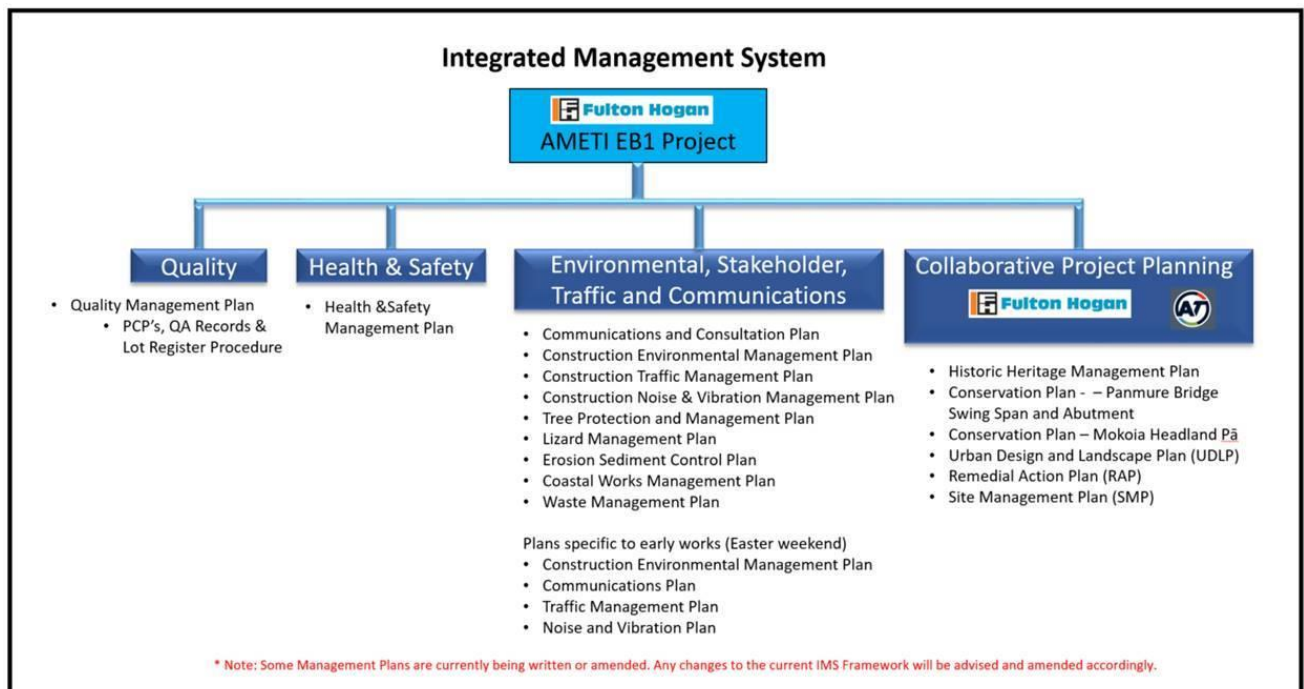


Table of Contents

1	Introduction.....	2
1.1	Purpose	2
1.2	Scope and Framework	2
1.3	Structure	3
1.4	Review and Update Requirements	3
2	Project Background.....	4
2.1	Project Overview	4
3	Legislative Requirements	5
3.1	Resource Consents and Designations	5
3.2	Key Result Areas	7
4	Engagement Strategy	8
4.1	Engagement Goal, Principals and Objectives.....	8
4.2	Expected Outcomes	8
4.3	Communications Framework	8
4.4	Parties to be engaged	9
4.4.1	Mana Whenua / Iwi	9
4.4.2	Key Stakeholders.....	10
4.4.3	Directly Affected Property Owners and Occupiers (Whole, Partial or Adjacent)	10
4.4.4	Neighbouring Property Owners and Occupiers (Including on Haul-Routes)	11
4.4.5	Wider Community	11
4.5	Tools and Techniques	11
5	Management Processes	15
5.1	Reporting and Meetings.....	15
5.2	Feedback Management Process	16
5.3	Enquiries and Complaints.....	17
5.4	Complaints.....	18
5.5	Response Timeframes.....	20
5.6	Branding and Logos	20
5.7	Email Management.....	21
5.8	0800 Phone Management	21
5.9	Incident Management	21
5.10	Media Enquires.....	22
5.11	Media Releases.....	22
5.12	Official Information Requests and Privacy Act.....	23
5.13	Risks and Opportunities.....	23
5.14	Website, Social Media and Newsletters	23
5.15	Photography	23
5.16	Engagement Database - Darzin	23
5.17	Signage and Hoardings	24
5.18	General Notification Periods.....	24
5.19	Inductions and Training	24
5.20	Key Messages and Q & As.....	24
5.21	Roles and Responsibilities.....	24
6	Implementation	28
6.1	Overall Implementation Approach	28
7	Appendix A - A list of stakeholders directly affected and affected in proximity parties	29
8	Appendix B - A list of key stakeholders.....	30

1 Introduction

1.1 Purpose

This Communication and Consultation Plan (CCP) has been developed to guide the Project Team, Fulton Hogan (FH) and Auckland Transport (AT) in community and stakeholder communications through the construction of the AMETI Eastern Busway Stage 1 – Panmure to Pakuranga (the Project) works.

The objective of the CCP is to set out a framework to enable appropriate communication and consultation is undertaken with the community, stakeholders, directly affected parties and affected in proximity parties during the construction phase of the project.

This Plan outlines the objectives of engagement and level of influence on decision making (the WHY and WHAT), WHO will be engaged, HOW engagement will be undertaken and timeframes (the WHEN) for engagement.

AT and FH are working together to deliver the engagement required for the Project – a ‘joined at the hip’ collaborative approach.

1.2 Scope and Framework

This Plan provides the framework for communication, consultation and engagement with the community, stakeholders, affected parties and affected in proximity parties¹ planned to inform the Project team through the development of the Project construction. It is designed to support associated works and structured to be able to grow to reflect any changes as the project progresses.

The project team have requirements to engage in order to meet statutory obligations and a best practice approach set out for the Project. This Plan is designed to address those obligations and requirements, including:

- The Land Transport Management Act (2003);
- The Heritage NZ Pouhere Taonga Act (2014);
- The Resource Management Act (RMA) (1991);
- Execution of consultation and engagement to meet the conditions set out in the AMETI Stage 2 A Designation (granted under the RMA)
- Execution of consultation and engagement to meet the conditions set out in the associated resource consent conditions (granted under the Auckland Council Unitary Plan);
- Best practice stakeholder and community engagement within IAP2 values and framework: and
- Engagement with stakeholders and affected parties in informing Management Plans, including but not limited to:
 - Construction Environmental Management Plan;
 - Communications and Consultation;
 - Traffic Management Plan;
 - Construction Noise and Vibration;
 - Site Management Plan;
 - Historic Heritage Management Plan;
 - Conservation Plans;
 - Urban Design and Landscape Plans;
 - Lizard Management Plan;
 - Tree Protection and Management Plan;
 - Coastal Works Management Plan;
 - Erosion and Sediment Control Plan;
 - Contaminated Soils Management Plan;
 - Investigation Works Plan;
 - Remedial Action Plan; and
 - Stormwater Operation and Maintenance Plan.

This Plan references and replaces the AT Pre-Construction Communication and Consultation Plan (most recently dated October 2018). As such, this Plan draws on the engagement already undertaken by AT and its Council predecessors over many years.

It is acknowledged that this Plan sits within a framework of other relevant project plans available to the project team.

This Plan is based on the International Association of Public Participation (IAP2) principles and core values. The IAP2 framework provides internationally recognised best practice engagement principles. IAP2 sets out a community engagement spectrum of participation depending on the decisions to be made and the associated level of influence the community can have on a Project.

1.3 Structure

This Plan is specifically designed to address the Project works. This document sets out the overall engagement requirements that apply to the Project.

Additional “Mini Plans” will be produced for events or significant engagement activities. E.g. around information days, significant road closures/openings, closure/opening of bus stops/stations. Mini Plans will still sit within and under this Plan. Contents of Mini Plans will include:

1. What / Where / When in relation to the event - detail / duration
2. Why the work / event is taking place
3. Who needs to be engaged (stakeholders)
4. How they will be engaged
5. The objectives of the Mini Plan
6. FAQs and Key Messages specific to the event/duration
7. Roles and responsibilities of the team during the event/duration
8. Detailed implementation plan

1.4 Review and Update Requirements

The CCP is a live document and will be updated to reflect progress and changes in approach as the Project proceeds and in response to any feedback being received from the community, stakeholders, directly affected parties and affected in proximity parties in relation to the Project and the management of its effects.

At least 20 working days prior to commencement of construction of any stage of the project or activity (whichever is relevant), AT (on behalf of FH) will submit the CCP to the Council’s Team Leader, Southern Monitoring to certify that the Plan complies and is consistent with the relevant designation condition(s).

Any material update to this Plan shall be provided to the Auckland Council Team Leader, Southern Monitoring for renewed certification (as per designation 17).

If, in the course of amendments undertaken as part of the review process, a material change to this Plan is made, those parties affected by the change must be notified within one month of the material change occurring (as per designation condition 23).

A copy of this plan will be available on the Project website and at the construction site office.

2 Project Background

2.1 Project Overview

Auckland Manukau Eastern Transport Initiative (AMETI) is the collective name given to a group of transport projects for the eastern suburbs of Auckland. AMETI is designed to provide an integrated multi-modal transport system that supports population and economic growth in East Auckland. It does this by providing improved alternative modes of transport beyond reliance on private vehicles, thereby helping to manage the effects of congestion on roads.

The Project comprises the construction, operation and maintenance of a multi modal transport corridor providing for better connections and accessibility between (and within) Panmure and Pakuranga town centres for all transport users. The Project is being undertaken by Auckland Transport (AT) as the Requiring Authority (RA) and continues on from the newly constructed Panmure bus/rail interchange and Te Horeta Road (Stage 1).

The Project includes the reconfiguration of the Panmure Roundabout to a signalised intersection, provision of a new 2.4-kilometre-long dedicated urban from this intersection along Lagoon Drive, across the Tamaki River via a new busway specific bridge on a parallel alignment with the existing Panmure road Bridge, and along Pakuranga Road to the intersection with Ti Rakau Drive. The Project will also provide for shared and dedicated cycle and footpaths along its entire length and includes ancillary activities to mitigate adverse effects (including effects on cultural values) associated with the Project. The Project footprint is shown in Figure 1 below.



Figure 1 Project Footprint

The Panmure and Pakuranga area, in which the Project is being undertaken, is a busy, built up urban area. Land uses adjacent to the Project works include commercial, low density residential housing (mainly made up of single detached dwellings and units), community facilities and Pakuranga Plaza – a large shopping mall.

3 Legislative Requirements

3.1 Resource Consents and Designations

This Plan has been developed in accordance with the relevant designation conditions. Table 1 identifies the conditions relating to communication and consultation, and which section(s) of this Plan address those conditions.

Table 1: Relevant designation conditions

Condition Number	Summary of Condition Text as relevant to this Plan	Relevant Sections of this Plan
10, 11,12 and 13	<p>Ongoing engagement with Mana Whenua through a forum is required for the duration of the project until the completion of construction. An invitation for membership on the kaitiaki forum must extend to (but not limited to) representatives of:</p> <ul style="list-style-type: none"> a. Ngāi Tai ki Tāmaki Tribal Trust; b. Ngāti Maru Runanga; c. Ngāti Paoa Iwi Trust; d. Ngāti Tamaoho Trust; e. Ngāti Te Ata Waiohū; f. Ngāti Whanaunga Inc Soc; g. Ngāti Whātua Ōrākei; h. Te Ākitai Waiohū; i. Te Kawerau a Maki; j. Te Ahiwaru Waiohū; and k. Te Patukirikiri. <p>The role of the forum is outlined in condition 12. Among many requirements, input into some management plans, input into recognition of cultural values through art, urban design and planting.</p>	Sc 4.4.1
14, 15 16 and 17	Sets out the requirements and expectations in relation to management plan certification, of which this Communication and Consultation Plan is one.	Sc 1.4
18	A copy of the latest certified version of this Communication and Consultation Plan is to be made available for public viewing on the Project website and a hard copy held and made available for viewing at each construction site.	Sc 4.5 (Table 2 – tool 19) Sc 5.13
19	The Requiring Authority is to implement a collaborative working process with its contractor team and the Auckland Council's Team Leader, Southern Monitoring (or representative) for dealing with day to day construction processes, including monitoring compliance with the designation conditions, the CEMP and other management plans, and any material changes to the management plans associated with construction of the project. This collaborative working process must:	Sc 1.1
19a	Identify a "key contact" person representing the Requiring Authority and a "key contact" person representing the contractor team to work with the Council's Consent Monitoring officer(s); and	Sc 5.21 (Table 8)
19b	The "key contacts" are to be identified in the CEMP and must meet at least monthly unless a different timeframe is agreed with the Council Consent Monitoring Officer(s).	Sc 5.21 (Table 8) Sc 5.1
19	The purpose of these meetings is to report on compliance with the designation conditions and with the CEMP, other management plans and material changes to those management plans, and on any matters of non-compliance including how they have been addressed.	Sc 5.1 (Table 3)
19c	<p>The purpose and function of the collaborative working process is to:</p> <p>Assist as necessary the Council's Team Leader Southern Monitoring (or representative) to confirm that:</p>	Sc 5.1

Condition Number	Summary of Condition Text as relevant to this Plan	Relevant Sections of this Plan
	<p>i. The works authorised by this designation are being carried out in compliance with the designation conditions, the CEMP and other Plans and any material changes to these plans; and</p> <p>ii. All monitoring and recording monitoring results are in compliance with the requirements of the CEMP and other plans and any material changes to these plans.</p>	
19d	Subsequent to a confirmed outline plan, provide a mechanism through which any changes to the design, CEMP or other plans which are not material changes triggering the requirement for a new outline plan, can be required, reviewed and confirmed by agreement between the Council's Consent Monitoring Officer and the Requiring Authority without further formality;	Sc 5.1
19e	Advise where changes to construction works may require an update to the CEMP or other management plan. Any update to the CEMP or other management plan must remain consistent with the relevant objective or purpose of the relevant CEMP or management plan; and	Sc 5.1
19f	Identify and review any concerns or complaints received from, or related to, the construction works monthly (unless a different timeframe is mutually agreed with the Council's Team Leader Southern Monitoring (or representative)) and the adequacy of the measures adopted to respond to these.	Sc 5
20	A contact person must be available during standard working hours and a 24 hour phone contact for the duration of the construction period to answer and/ or follow-up on public enquiries and concerns about the Project and construction works.	Sc 4.5 (Table 2 - Channel 17), 5.3, 5.4 (Table 5), 5.7, 5.21 (table 8)
21	The Requiring Authority must prepare and submit a CCP to the Council's Team Leader, Southern Monitoring for certification. The CCP is to be implemented and complied with for the duration of construction of the AMETI Stage 2A project. The objective of the CCP is to set out a framework to enable appropriate communication and consultation is undertaken with the community, stakeholders, directly affected parties and affected in proximity parties during the construction phase of the project.	This Plan
22	The CCP is to set out and/or include the following:	Sc 4.5, 5.4
	a. Inform the community of construction progress and future construction activities and constraints that could affect them (including activities that will cause any noise, vibration, dust and lighting effects, information on temporary traffic disruptions and suggested alternative routes to avoid traffic disruption, temporary restrictions on navigation of the Tamaki River channel);	
	b. Provide early information on key project milestones;	Sc 4.5
	c. Obtain and specify a reasonable timeframe (being not less than 10 working days), for feedback and inputs from directly affected and affected in proximity parties regarding the construction of the Project and implementation of the CEMP or other subsidiary management plans; and	Sc 4.5
	d. Respond to queries and complaints including, but not limited to:	Sc 5.3 – 5.5
	i. Who is responsible for responding;	
	ii. How responses will be provided; and	
	iii. The timeframes in which the responses will be provided.	
	e. A communications framework that details the Requiring Authority's communication strategies, the accountabilities, frequency of communications and consultation, the range of communication and consultation tools to be used (including any modern and relevant communication methods, newsletters or similar, advertising etc.), and any other relevant communication matters;	Sc 4.3, 4.5
	f. Details of the Communication and Consultation Manager for the Project including their contact details (phone, email and postal address);	Sc 5.21 (Table 8)
	g. Methods for identifying, communicating and consulting with people affected by the Project including but not limited to:	Sc 4.4, 4.5
	i. All residential and business property owners and occupiers directly affected or affected by proximity to the project (specifically providing the owner and occupiers of the building at 13-17 Queens Road with at least six months' notice before works commence on the retaining structure adjacent to the building at 13-17 Queens Road);	

Condition Number	Summary of Condition Text as relevant to this Plan	Relevant Sections of this Plan
	<p>ii. All community and education facilities directly affected or affected by proximity to the project, including methods to assist these facilities to consult with their customers/stakeholders;</p> <p>iii. Key stakeholders including the Council's Parks Department;</p> <p>iv. The wider community; and</p> <p>iv. Network utility operators.</p>	
	h. Methods for communication and consulting in advance of proposed hours of construction activities outside normal working hours and on weekends and public holidays, to directly affected and affected by proximity parties (including surrounding communities, and the owner and occupiers of the building at 13-17 Queens Road);	Sc 4.4.3, 4.4.4, 4.5
	i. Methods for communicating with directly affected and affected by proximity parties (including surrounding communities), bus (public and private) operators, taxi operators, bus users, education facilities with walking school bus services and travel management plans, and the general public in advance of temporary traffic management measures and permanent changes to road networks and layouts;	Sc 4.4.5, 4.5
	j. Methods for communicating and consulting in advance of construction works with emergency services (Police, Fire and Emergency, Ambulance) on the location, timing and duration of construction works, and particularly in relation to temporary road lane reductions and/or closures and the alternative routes or detours to be used; in relation to temporary road lane reductions and/or closures and the alternative routes or detours to be used;	Sc 4.4.2, 4.5
	k. Specific communications proposed for updating stakeholders including affected parties on construction timeframes;	Sc 4.5
	l. Confirmation that stakeholders including affected parties will be updated on construction timeframes at least every two months both prior to and during construction; and if construction is postponed, affected parties will continue to be updated;	Sc 4.5 (Table 2 – Channel 1)
	m. Methods for consulting with residents along local roads proposed to be used for the project works, as well as Carey College and residents adjacent to construction yards;	Sc 4.4.2, 4.5
	n. Methods for consulting and communicating with the Harbourmaster and river users to manage temporary navigation restrictions of the Tamaki River channel safely;	Sc 4.4.2, 4.5
	o. Methods for communicating and consulting in advance of construction works, regarding changes to staff and customer parking and supplier deliveries in the Panmure town centre;	Sc 4.5
	p. The process for Concerns and Complaints Management (receiving, acknowledging, responding and reporting to the community on actions taken);	Sc 5.3 - 5.5
	q. A list of stakeholders directly affected and affected in proximity parties to be communicated with;	Appendix A
	r. Details of any feedback received from those consulted with. Where feedback is received through the CCP consultation process, the CCP must include details of:	Sc 5.2
	s. How feedback has been incorporated into this and/or other management plans; and	Sc 5.2
	i. Where feedback has not been incorporated the reasons why.	
	t/u. As relevant specific linkages and cross-references to where mitigation proposed through the CEMP and management plans contributes to achievement of the CPP's objectives. A summary of the communication and consultation undertaken between the Requiring Authority and parties consulted and communicated with. This summary is to include any outstanding issues or disputes raised by parties.	Sc 5.2
40-43	Relates to building condition surveys and post-construction condition assessments. Prior to construction, a building condition survey must be undertaken of any building or structure that has been identified and assessed as potentially affected by vibration damage arising from construction.	4.5 and 6

3.2 Key Result Areas

Key Result Areas (KRAs) are currently under negotiation with AT. It is proposed that there be a KRA relating to stakeholders and the community.

4 Engagement Strategy

This section outlines the engagement strategy proposed for the Project. It identifies:

- Objectives of engagement which set the tone for all engagement undertaken;
- IAP2 Framework applied to ensure a robust approach;
- Parties (people and groups) identified as integral to successful implementation; and
- Tools and techniques planned to be utilised in the execution.

Further detail on implementation and management processes are provided in sections 5 and 6 below.

4.1 Engagement Goal, Principals and Objectives

The primary goal of engagement for this Project is:

From the Pre-construction CCP:

We are committed to delivering the Project as fast as possible with as little disruption as possible to businesses, commuters and the community and will work with them to achieve this.

To build and maintain effective and constructive relationships with all stakeholders and the community, including positive interactions with directly affected land owners and neighbours, with the aim of managing effects, enhancing support for the Project and the positive reputation of all project partners.

Our principles of engagement are to:

- Commit to understanding and addressing the communication needs and expectations of all stakeholders, including affected parties and affected in proximity parties;
- Present one face to the public and to all stakeholders for the Project; and
- Appoint a Communication and Consultation Manager (Stakeholder Manager) to be the one point of contact for feedback, queries and complaints with a coordinated response in accordance with AT agreed procedural guidelines.

Our objectives of engagement are to:

- Educate, inform and positively engage with affected stakeholders about work progress, construction activities and any constraints and timelines that may affect them in order to mitigate or minimise disruptions;
- Implement and maintain an “early warning/no surprises” approach. Minimise inconvenience to key stakeholders and the community by providing timely and regular information regarding any scheduled disruptions to traffic, public transport services, access to property or any other construction impacts;
- Provide a consistent ‘one face’ approach for the Project;
- Form and maintain strong relationships with key stakeholders; and
- Obtain, manage and respond to feedback, queries and complaints.

4.2 Expected Outcomes

The following is a summary of expected outcomes as a result of implementing this Plan:

- Strong relationships with key stakeholders;
- Positive interaction with directly affected and affected in proximity parties;
- Robust information received to inform the CEMP and other management plans;
- Informed community;
- Informed public transport and road users
- Information is provided early on, prior to key project milestones;
- Informative and useful online presence;
- Positive media coverage; and
- Reduced misinformation.

4.3 Communications Framework

Engagement for this Project will follow the International Association of Public Participation (IAP2) best practice guidelines. The level of engagement will depend on the stakeholder and the level of effect. The spectrum of engagement (refer to Figure 2 below) will range from inform (e.g. wider community) through to Collaborate (e.g. Iwi /Mana Whenua).

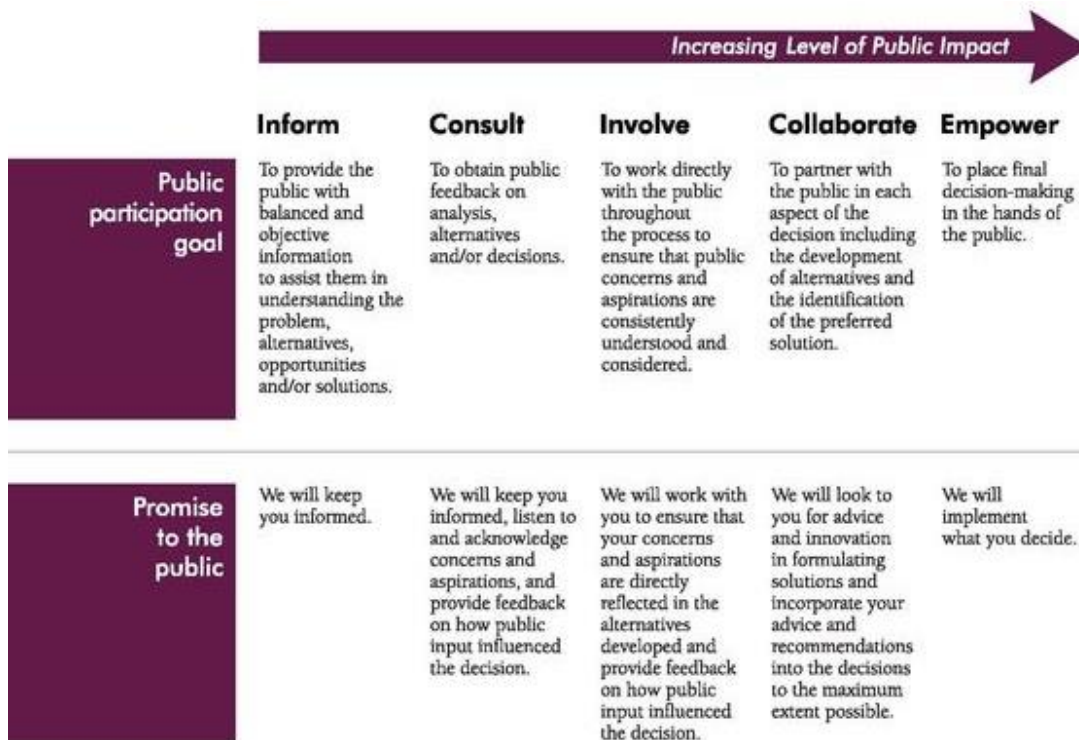


Figure 2: IAP2 spectrum of public participation (Source: iap2.com)

4.4 Parties to be engaged

In order to engage appropriately with the Project's interested parties, they have been grouped as follows:

- Mana whenua / Iwi;
- Key stakeholders (including CLG, Key Stakeholder Forum, key local businesses and organisations);
- Directly affected and affected in proximity property owners and occupiers (whole, partial or immediately adjacent);
- Neighbouring property owners and occupiers (including on haul-routes);
- Wider community.

These are further detailed below.

A full list of Project key stakeholders is provided in Appendix B

4.4.1 Mana Whenua / Iwi

An AMETI mana whenua forum (monthly hui) was established in 2012 for the purposes of undertaking kaitiakitanga responsibilities associated with the Project and has been the primary engagement tool, applying the Māori tikanga (process) of kano ki te kano (face to face). This kaitiaki forum comprises those mana whenua groups who expressed an interest in being involved in the Project and its related activities. Eleven mana whenua self-identified their interest in AMETI and are currently part of the forum:

- Ngāti Paoa
- Ngāti Tamaoho
- Ngāti Maru
- Ngāi Tai Ki Tāmaki
- Ngāti Whanaunga
- Ngāti Tamatera
- Te Ahiwaru/Makaurau
- Te Akitai Waiohua
- Te Patukirikiri
- Ngāti Te Ata
- Ngāti Whātua Orākei
- Te Kawerau a Waki

Regular hui have been held and will continue to be held (currently monthly) with intermittent workshops to discuss discrete pieces of work. The mana whenua forum will continue to address matters such as input into the preparation of the following management plans:

- Historic Heritage Management Plan;
- Lizard Management Plan;
- Urban Design and Landscape Plan; and
- the CEMP.

The forum will continue to address additional matters such as:

- Archaeology including assistance with discovery protocols;
- Kōiwi and artefact discovery;
- Cultural induction for construction contractors;
- Cultural monitoring;
- Incorporating cultural recognition elements into features of the Project; and
- Ongoing provision of mātauranga Māori input.

The forum can also provide written advice to AT on these matters for consideration.

- AT own the relationship with mana whenua and retain responsibility for interactions with the forum. FH team members will attend hui and provide information as requested and required.
- FH will ensure that protocols are followed for recovery and preservation of taonga, kōiwi, and other items of interest to Māori discovered during construction. These protocols will be identified in the Historic Heritage Management Plan and CEMP.

All project staff (AT and FH) will be provided a cultural induction in accordance with iwi guidelines.

Mana whenua are seen as partners to the Crown in relation to the Project and are participating in the Project at the Involve-Collaborate level on the IAP2 spectrum.

4.4.2 Key Stakeholders

Stakeholders are identified as any group or organisation representing a collective interest in the Project over and above the interests of individuals within the general public. Stakeholder organisations identified to be engaged with include:

- Auckland Council and Auckland Transport in a stakeholder capacity (e.g. Stuart McAlpine re buses);
- Auckland Harbour Master
- Elected representatives including MPs, Ward Councillors and Local Board members;
- Government organisations such as Department of Conservation, Heritage NZ Pouhere Taonga, Ministry of Education;
- Auckland Council and Environmental Protection Authority (EPA) in a regulatory capacity;
- Residents and business associations; including residents adjacent to construction yards
- Emergency services (Police, Fire and Emergency, Ambulance);
- Key local businesses (Panmure Town Centre);
- Utility operators (including Watercare, Chorus, Vodafone and Vector);
- Environmental groups;
- Carey College;
- Bike Auckland and local cyclists; and
- Transport organisations.

A list of key stakeholders is attached as Appendix B to this CCP and are maintained in the project Engagement Database – Darzin.

Engagement with stakeholders is owned by AT and FH. Each key stakeholder has an identified relationship owner within the Project team – either from AT or FH. Primary methods of engagement are one-on-one meetings and group meetings.

Key stakeholders are participating in the Project at the Consult-Collaborate level on the IAP2 spectrum.

4.4.3 Directly Affected Property Owners and Occupiers (Whole, Partial or Adjacent)

Directly affected property owners include those properties which are physically impacted by the Project footprint / designation (i.e. purchase is required) and/or have project construction requirements for access/works e.g. for fence work (i.e. a licence to occupy is required). It is noted that properties required permanently, either in whole or part, will be or have been purchased by AT.

Our contact with these properties will include both owners and tenants.

All property owner relationships have been managed by AT to date. Going forward, the relationship will be managed by FH, with support from AT as necessary.

Directly affected property owners and identified neighbours are participating in the Project at the Consult – Involve level on the IAP2 spectrum.

4.4.4 Neighbouring Property Owners and Occupiers (Including on Haul-Routes)

Identified Neighbours are those whose properties are in close proximity to the works, but are not within the designation and are not impacted by property purchase or licence to occupy requirements. These properties may be on haul routes or similar. Our contact with these properties will include both owners and tenants.

All property owner relationships have been managed by AT to date. Going forward, the relationship will be managed by FH, with support from AT as necessary.

Identified neighbours are participating in the Project at the Consult level on the IAP2 spectrum.

4.4.5 Wider Community

- The wider community include anyone else (outside of those identified in 4.4.1 – 4.4.4 above) with an interest in the Project. This may include the surrounding communities, road users, public transport users, enthusiasts etc.

AT has existing email/text/web systems in place to communicate with public transport and road users in Auckland (including taxi companies and bus operators) and these will be utilised where the AMETI construction impacts on bus and other transport services.

AT will remain responsible for engagement with the wider community through key overall Project messaging and broader level detail through newsletters, advertising etc. FH will provide support as required to inform this.

Contact with the wider community will be primarily through newsletters, letter drops and email communications by way of a self-selected mailing list.

The wider community will be participating in the Project at the Inform-Consult level on the IAP2 spectrum.

4.5 Tools and Techniques

To ensure the level of communication with stakeholders and affected community groups is effective, a number of different communication channels will be used. These are described more fully in Table 2 below.

- Unless specified, the frequency of communication for the various tools outlined below will be as required, depending on the nature of the activity to be undertaken and the scale of the effect. AT have specifically provided the owner and occupiers of the building at 13-17 Queens Road with six months' notice before works commence on the retaining structure adjacent to the building at 13-17 Queens Road.
- The purpose of these tools is to inform the community of construction progress and future construction activities and constraints that could affect them including (but not limited to) activities that will cause any noise, vibration, dust and lighting effects, information on temporary traffic disruptions and suggested alternative routes to avoid traffic disruption, temporary restrictions on navigation of the Tamaki River channel);
- Methods for communicating and consulting in advance of construction works with emergency services (Police, Fire and Emergency, Ambulance) on the location, timing and duration of construction works, and particularly in relation to temporary road lane reductions and/or closures and the alternative routes or detours to be used will be undertaken in accordance with the Construction Traffic Management Plan.
- The Project engagement team will identify which stakeholders need to be consulted, which tool is most appropriate to use and the frequency of consultation required.

Table 2: Communication Tools and Techniques

Channel	Tool: Publication	Usage / Content
1	Bi-Monthly AMETI Project Newsletter	Project wide updates around up and coming construction activities, interesting stories from site, progress etc. These are distributed to 20,000 properties and online. Where construction is postponed affected parties will continue to be updated. Wholly managed by AT. Content ideas and information support from FH as required.
2	Monthly Construction Update – progress and look-ahead	E-notices that provide advance notification of the proposed work activities and potential impacts. These can include photographs from site progress over the previous month. These will be emailed to the project mailing lists through self-selection. Directly affected parties will be encouraged to sign up too.

Channel	Tool: Publication	Usage / Content
		Wholly managed by AT. Content ideas and information support from FH as required.
3	Weekly traffic and changes report	<p>Key traffic disruptions, road closures and other critical or helpful information for the week ahead.</p> <p>Emailed weekly (if required) to the project distribution list which people can sign up to.</p> <p>Wholly managed by FH.</p>
4	Letters	<p>Letters to explain upcoming works (e.g. noisy night work), potential impacts or to address a particular issue with specifically targeted residents or stakeholders.</p> <p>Letterbox or email according to the recipient's preferences or distribution requirements.</p> <p>Letters in accordance with Site Specific Noise and Vibration Management Plans</p> <p>Wholly managed by FH. Letters approved by AT prior to delivery.</p>
5	Information Sheets	<p>A one-page information sheet featuring details on a particular aspect of the Project. For example, construction techniques, dust and noise mitigation.</p> <p>Distribution online or hard copy.</p> <p>Information sheets in accordance with Site Specific Noise and Vibration Management Plans</p> <p>Wholly managed by AT. Content ideas and information support from FH as required.</p>
6	Posters	<p>Advertising construction activities, associated detours and disruptions.</p> <p>Displayed at information stations, project offices and AT designated locations.</p> <p>Wholly managed by AT. Content ideas and information support from FH as required.</p>
7	Reports	<p>Monthly reports highlighting the key issues, current and planned communication and engagement activities and performance for the reported period.</p> <p>These will be supplied by FH.</p>
8	FAQs and Q&As	<p>Approved responses to frequently asked questions.</p> <p>Distribution email or online.</p> <p>Wholly managed by AT. Content ideas and information support from FH as required.</p>
9	Calling Cards	<p>Able to be left at properties when we have called in and owner not home.</p> <p>AT to develop and print for FH use.</p>
10	Feedback forms	<p>Feedback forms will be made available at all information sessions. These will encourage the community to comment on whether they feel that they are being kept up to date on progress and voice concerns.</p> <p>Wholly managed by AT. Content ideas and information support from FH as required.</p>
11	Business Cards	<p>Containing contact details of the project email, phone, website. Distributed to all team members who can then pass on to stakeholders and the community as required.</p> <p>AT to develop and print for FH use.</p>

Channel	Tool: Face to Face	Usage / Content
12	One-on-one discussions	<p>One-on-one meetings with residents, businesses or organisations to address specific concerns.</p> <p>One on one discussions in accordance with Site Specific Noise and Vibration Management Plans.</p> <p>This may include one on one discussions with the Harbourmaster and river users, including waka ama groups, to manage temporary navigation restrictions of the Tamaki River channel safely in accordance with the Coastal Works Management Plan.</p> <p>FH will look after residents and businesses. AT will remain responsible for key stakeholder organisations.</p>
13	Info Hub	<p>An info-hub is being considered in Panmure or Pakuranga Town Centre for the public to visit in case they have concerns or questions.</p> <p>This is wholly managed by AT.</p>
14	Door knocks	<p>Advising businesses of construction impacts and timeframes that will particularly affect individuals or properties, particularly as part of the listed affected parties in the designation and resource consent conditions and those listed in Site Specific Noise and Vibration Management Plans</p> <p>This will be undertaken by FH with support from AT as required.</p>
15	Project briefings	<p>Regular update sessions with AT, harbourmaster, business groups, government or transport operators informing them of project progress. These sessions are particularly useful for individuals and organisations associated with the project, but who are not directly involved in the day-to-day operations.</p> <p>Wholly managed by AT. Content ideas and information support from FH as required.</p>
16	BBQs	<p>Street and area BBQs are planned as a way of connecting with the community.</p> <p>Wholly managed by AT. Support from FH as available.</p>

Channel	Tool: Electronic	Usage / Content
17	0800 information phone	<p>The FH 0800 number will be printed on all external and internal communications to encourage community members to call with any enquiries. The number is operational 24/7 and will answered by AT. AT will then direct any calls through to FH, who will also be available 24/7.</p>
18	Project email address	<p>Public project-specific email address (ameti@fultonhogan.com). Printed on all external and internal communications to encourage community members to email with any enquiries.</p> <p>The community will be encouraged to contact AT via the Project email address. The email inbox will be an essential mechanism for capturing community feedback and enabling community members to contact the team at a time which is convenient to them.</p> <p>The email address will be managed by FH.</p>
19	AT website	<p>FH will provide AT with information for its dedicated AMETI EB1 project page on the AT website. This will include this Plan, works alerts, and information about road detours and disruptions. It will also provide construction progress photos and updates. Community members will be directed to the website for project updates.</p> <p>AT/travel plan east is likely landing page for all construction information on the project.</p>

The website is wholly managed by AT. FH will supply information as required to be uploaded.

Channel	Tool: Advertising and Media	Usage / Content
20	Print and social media	Print, social media and outdoor media will be used to communicate significant impacts such as road closures and detours and advise of upcoming community information sessions. All print and social media is managed by AT.
21	Radio announcements	Radio announcements will be used for significant changes such as major disruption to services and road detours. All radio announcements will be managed by AT.
22	Media Releases	Released as appropriate at key project milestones. These will be wholly managed by AT.
23	Signage and hoardings	Project signage, hoarding and detour signage will be produced by FH to show traffic detours and changes to bus, cycle and haulage routes (as required under project Traffic Management Plans and the Coastal Works Management Plan). All other signage, such as way-finding with mascot Kirby, will be produced by AT. In addition to site safety, construction site hoardings will be located and designed to maintain an acceptable standard of amenity for the adjoining community.

Channel	Tool: Database	Usage / Content
24	Darzin	All communication and correspondence with stakeholders undertaken prior to and during construction will be recorded in Darzin. Darzin will remain the primary communications database for the Project. FH engagement staff will be trained in the use of Darzin and will be jointly responsible with AT engagement staff for keeping all records up to date in Darzin.

Channel	Tool: Learning Opportunities	Usage / Content
25	Community education	Visiting and presenting about the construction of the Project at local educational facilities; and Providing interpretative signage for things like the historic Panmure Bridge Swivel Span and Abutment, stormwater treatments used for mitigation for the Project; Mokoia Pā, etc. These activities will be developed and executed by AT, with attendance and support from FH as available.
26	Mini-workshops and team sessions	Ongoing team training and development in areas of communication, incident management, complaint processes, media requirements etc. Managed through the FH and AT teams.

27	Community feedback forms	Community feedback through community surveys or similar. Surveys should be undertaken at least once during the design phase, annually during construction and at least every two years during operation. Wholly managed by AT. Content ideas and information support from FH as required.
----	--------------------------	--

Channel	Tool: Property Management	Usage / Content
28	Building pre-condition surveys	Building pre-condition surveys are planned for all parties identified as directly affected or affected by proximity (as per the conditions of the designation in accordance with the Construction Noise and Vibration Management Plan and any Site Specific Construction Noise and Vibration Management Plans). Precondition surveys will be undertaken prior to works starting. Following completion of works, a further survey will be undertaken. This will be managed by FH.
29	Site-specific noise and/or vibration monitoring	As needed, monitoring may take place to ensure compliance with conditions of consent. This will be on an as needed basis in accordance with the Construction Noise and Vibration Management Plan and any Site Specific Construction Noise and Vibration Management Plans. This will be managed by FH.

5 Management Processes

5.1 Reporting and Meetings

The FH Stakeholder Manager will meet with the AT AMETI Communications Team each week during the construction phase of the Project on all key community relations and stakeholder management issues (refer to Table 3 below).

For any high risk issues, the FH Stakeholder Manager will report to the AT AMETI Communications Team immediately about any high-risk issues or concerns that will:

- Have the potential to attract media attention; and/or
- Present reputational risk to the Project participants.

On an at least monthly basis, FH will report on compliance with the designation conditions and with the CCP and any material changes or any matters of non-compliance including how they have been addressed including any confirmed agreements between the Council's Consent Monitoring Officer and FH/AT.

Table 3: Reporting Methods

Tool	Responsibility	Description
Urgent Notifications	FH Stakeholder Manager	Immediately report any issues or concerns to AT AMETI Communications Team when they may result in media interest or present reputational risk to the project participants.
Weekly meeting	FH Stakeholder Manager	Provide information to AT AMETI Communications Team on all key community relations and stakeholder management issues including: <ul style="list-style-type: none"> • Details of 'live', 'emerging' and 'horizon' issues and mitigation strategies • A breakdown of stakeholder meetings held and proposed for the following month • A summary of enquiries and complaints received, agreements made and issues to be resolved • A 12 week look ahead of construction program and aligned communication activities

		<ul style="list-style-type: none"> • Potential media opportunities/risks • Any information published • Opportunities to promote construction milestones. • Compliance with the designation conditions and with the CCP and any material changes or any matters of non-compliance including how they have been addressed. <p>Minutes from these meetings will be recorded in the project communications database.</p> <p>The key objectives of the meetings are to:</p> <ul style="list-style-type: none"> • Address any contentious issues that may affect the reputation of AT and the contractor; • Assist in facilitating a two-way flow of information between the Project and stakeholder so that construction impacts and the safety of people can be optimally managed; and • Monitor stakeholder satisfaction.
Communications Database (Darzin)	FH Stakeholder Manager	<p>Record all communication and correspondence (i.e. meetings, telephone conversations, emails) with affected parties and stakeholders.</p> <p>Notes should include contact details of stakeholders, a record of the main items of discussion (particularly around the identification and management of adverse effects), any undertakings from AT and agreed actions.</p> <p>AT Communications team are responsible for directly recording all communication and correspondence they carry out with affected parties and stakeholders in Darzin.</p>

5.2 Feedback Management Process

As part of the pre-work for each construction activity, stakeholders who are directly and potentially affected by the work to be carried out are identified and feedback received during consultations is managed in the following manner.

Directly affected parties

- Those identified as directly affected parties are approached initially via property addressed letters which provide an overview of the upcoming work and the likely impact. Where additional activity such as a Building Condition Survey (BCS) is identified as recommended (either by Client, Complaint or through the Site Specific Construction Noise and Vibration Management Plans), letters are sent to the owners of the property. Depending upon the circumstances owners and/or occupiers are requested to contact the FH Stakeholder Manager within a stated timeframe to arrange for one-on-one discussion regarding the upcoming activity. Where responses are not received by the FH Stakeholder Manager within the stated timeframe, the FH Stakeholder Manager will complete a series of door knocks to attempt to communicate with the owner or occupier. If there is no response to door knock activity, calling cards requesting contact will be left in a visible place for the owner or occupier.
- All letters and communications include details of the AMETI 0800 number and an email address as a communication channel for all concerns and feedback.
- The FH Stakeholder Manager supported by appropriate FH or AT Project Team members will complete one-on-one conversations to address affected parties concerns as applicable. Where specific information or feedback is sought such as plans relating to Noise, Vibration, Dust, Traffic / Pedestrian Management etc, these plans will also be discussed and made available to the affected party.
- All concerns and feedback received from affected parties are logged in Darzin and passed onto the appropriate parties for consideration, such as FH Project Leads or Auckland Transport Stakeholder Managers depending upon the nature of the parties concern or feedback.
- Each month a record of feedback activity will be reviewed by the FH Stakeholder Manager to check that all actions (where required) have been closed out. This will also include any outstanding issues or outstanding disputes raised.
- Where applicable, feedback will be incorporated into this CCP, CEMP and/or other subsidiary management plans through the prescribed management plan review process.
- Responses are provided back to the affected parties once received, including where feedback has not been incorporated, the reasons why.

Neighbouring Property Owners

- Those identified as affected in proximity parties will receive notifications of upcoming works letters distributed to their residential letterboxes or business locations which provide an overview of the upcoming work and the likely impact.
- All letters and communications include details of the AMETI 0800 number and email address as a communication channel for all concerns and feedback.
- All concerns and feedback received from affected parties are logged in Darzin and passed onto the appropriate parties for consideration, such as FH Project Leads or Auckland Transport Stakeholder Managers depending upon the nature of the parties concern or feedback.
- Each month a record of feedback activity will be reviewed by the FH Stakeholder Manager to check that all actions (where required) have been closed out. This will also include any outstanding issues or outstanding disputes raised.
- Where applicable, feedback will be incorporated into this CCP, CEMP and/or other subsidiary management plans through the prescribed management plan review process.
- Responses are provided back to the affected parties once received, including where feedback has not been incorporated, the reasons why.

5.3 Enquiries and Complaints

The process below outlines how community enquiries (including general queries, compliments and other feedback) will be handled as they are received via phone, writing or face to face. Complaints will be handled in this manner until they are defined as a complaint.

All enquiries will be handled in a responsive and proactive manner, with an acknowledgement and contact made within one working day of receipt. All such contacts will be recorded in Darzin. Any enquiry not related to the Project works must be passed back to AT as soon as possible. The process for managing general enquiries or complaints is set out in the below flowchart (Figure 3).

Stakeholder Queries Flowchart

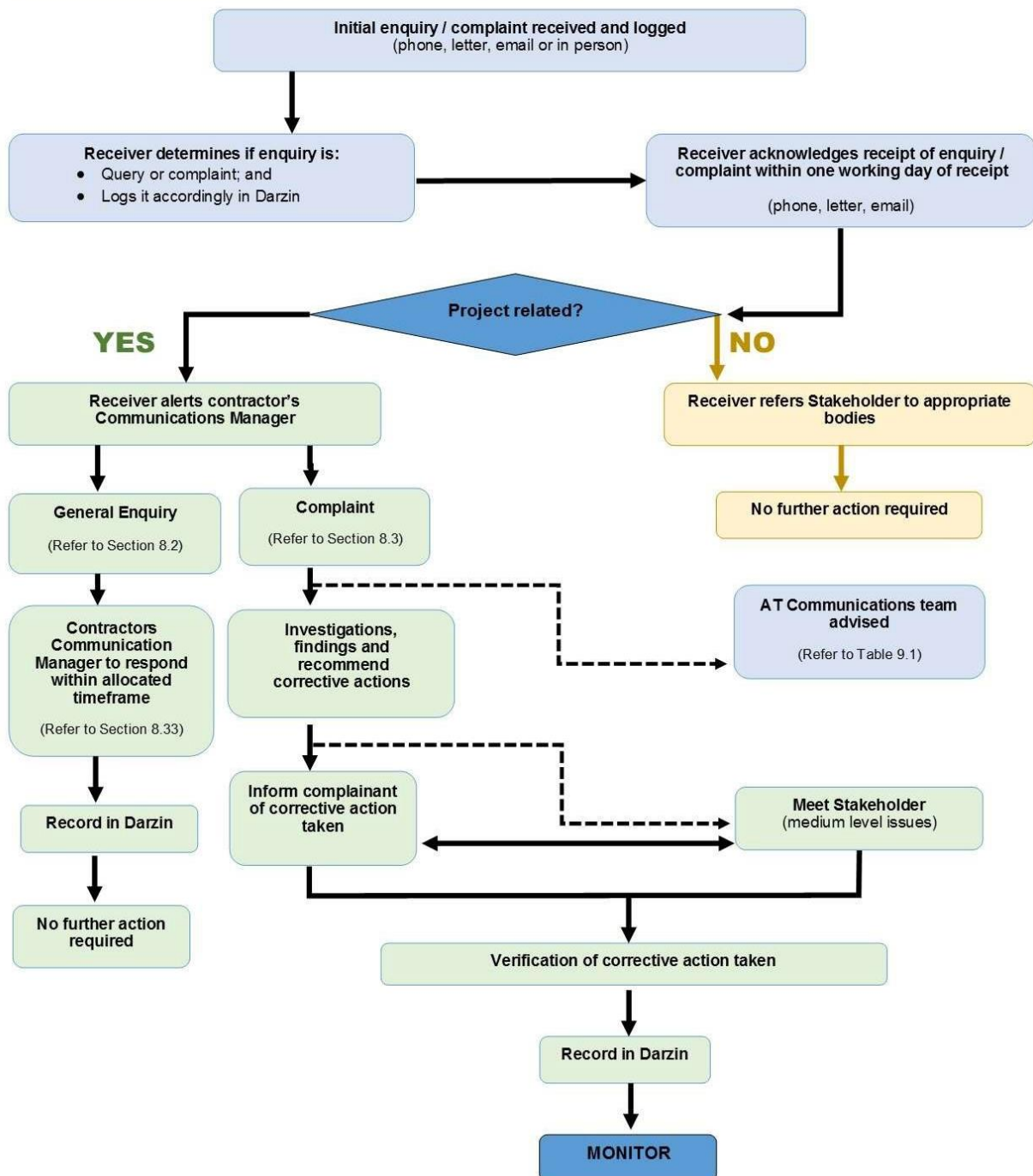


Figure 3 – Public Queries Flowchart

5.4 Complaints

Some enquiries will be defined as complaints.

The following provides guidance in determining whether or not an expression of dissatisfaction is classified as a complaint. The International Standards Organisation provides a definition of complaint in ISO 9000:2015:

Expression of dissatisfaction made to an organisation, related to its product or service, or the complaints-handling process itself, where a response or resolution is explicitly or implicitly expected.

To further clarify this in relation to construction works, the following diagram is useful:

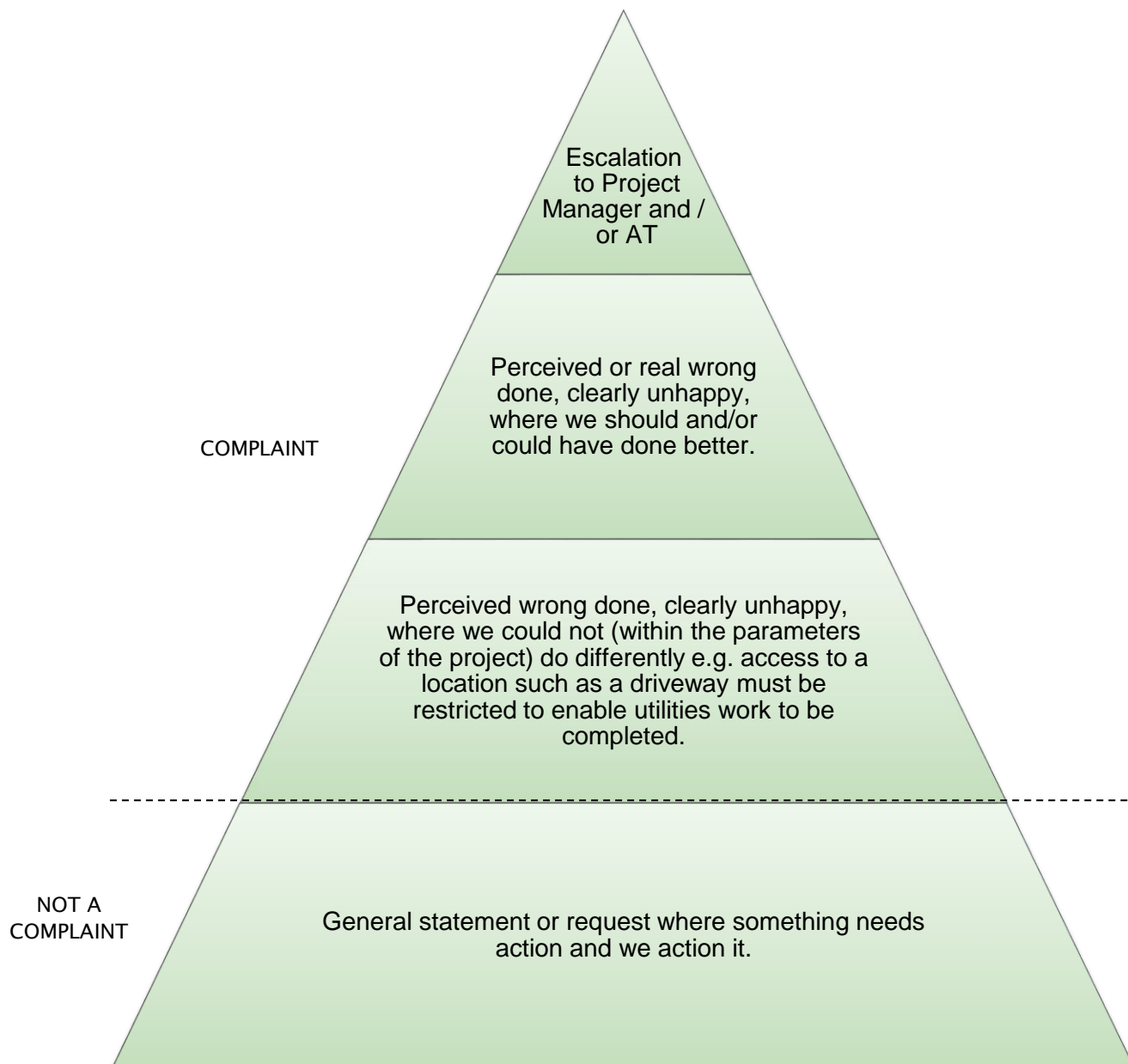


Figure 4: Complaint definition diagram

All Project related complaints will be dealt with in a responsive manner so that stakeholders concerns are heard and addressed. This approach is designed to develop a relationship of trust and reliability between the community and project team.

The Project will be contactable 24/7 by Freephone number which will be managed by FH.

When a complaint is received by any member of the project team, details of this should be forwarded to the FH Stakeholder Manager and Project Director. On receipt of this information, the FH Stakeholder Manager/ team shall contact the complainant and/or enquirer directly and follow the protocols outlined in the table below.

The project team will comply with all reasonable directions from AT in relation to the resolution of any escalated complaints.

Environmental complaints will be managed in a manner consistent with the relevant CEMP process. This will include addressing and reviewing complaints at the monthly meeting with Auckland Council.

Table 4: Complaints Process

Stage	Description
1	All complaints are forwarded to the FH Stakeholder Manager and FH Project Director

2	The FH Stakeholder Manager acknowledges the complaint immediately by phone or writing. If the FH Stakeholder Manager is not available, the FH Project Director (or their nominated representative from the project team) acknowledges the complaint.
3	The contact details of the complainant and details of the complaint are entered into the Darzin database.
4	Acknowledgement of a complaint is provided within <u>one working day</u> of receipt. Major complaints such as building damage will be addressed as soon as is practicable. Formal acknowledgement shall be made within <u>five working days of receipt</u> .
5	The FH Stakeholder Manager works closely with the FH Project Director and delivery team to resolve complaints. They will be proactive in keeping complainants informed of what action is being taken to address their concerns.
6	If a complaint cannot be resolved within the complaints process timeframe, the complainant will be invited to a meeting with the FH Stakeholder Manager and FH Project Management team.
7	All meetings are recorded in Darzin to ensure that a complete record of times, dates and location of meetings is maintained.
8	When a complaint is resolved it should be 'closed out' as an action in Darzin. Each month a record of complaints activity will be reviewed by the FH Stakeholder Manager to check that all actions have been closed out. This will also include any outstanding issues or disputes raised.
9	One month after a complaint has been closed out, the FH Stakeholder Manager will make a follow up call to the complainant and record any feedback in Darzin.
10	Complaints data will be reviewed regularly by the FH Stakeholder Manager, together with the contractor Project Director to identify any trends. If required, improvements to project processes and mitigation strategies will be implemented to minimise future complaints.

5.5 Response Timeframes

Table 5: Response timeframes for general enquiries/ complaints

Enquiry Channel	Response Timeframe
Written correspondence (letters)	Within five working days of receipt of the enquiry/complaint by the contractors Communication Team.
General correspondence (including emails) and 24/7 Project Information Line Calls	Acknowledgement is provided within one working day of receipt of the enquiry/complaint by the FH Communication Team. Resolved within two working days if practicable, unless there is an escalation due to scale or complexity, in which case this will be provided as soon as practicable.

5.6 Branding and Logos

All communication materials and signage developed will adhere to the AT Branding Guidelines. The Branding Guidelines are available from AT upon request.

FH will:

- Communicate the requirements of the Branding Guidelines to the wider project team; and
- Ensure that the brand and reputation is successfully promoted during the delivery of the Project.

Branding will be applied consistently the project, including:

- Project name;
- Approved logo;
- Colour palette and layout standards;
- Typeface;
- Graphical elements;
- Site apparel/office uniforms;
- Approved business card and email signature format;
- Standard templates for documents and other communication materials; and

- Approval processes.

The overall AT branding will be supported with the FH brand, which will be used to provide a local and dedicated community face for the appointed construction delivery team.

Guidelines for all project collateral will be in line with AT standards to ensure consistency.

The AMETI Communication and Engagement Manager needs to sign off and give approval to any designs with regard to communication materials and signage for the Project.

5.7 Email Management

A project specific email address has been established by AT. All general project emails to directly affected parties, neighbours, the public and community based stakeholders must be sent through this email address.

All community/stakeholder emails must be recorded in the project engagement database - Darzin.

5.8 0800 Phone Management

AT has an established call centre number for enquiries. For the Project, callers will be connected through to a dedicated line direct to the FH Communication Team. This will remain in place throughout the construction phase of the Project.

This number (0800 300 007) will feature across all Project signage, communication material, the AT project website, and other collateral, and provide 24-hour access to the construction team.

Any calls will divert to a specific mobile phone which sole purpose is to answer such calls. This phone will be managed by the stakeholder team.

The phone will be answered 24/7 by either the FH stakeholder team or a dedicated project answer service.

If a call is answered by the answer service, callers will be asked if the call is urgent and requires immediate response, or if a message can be taken to respond within business hours. When a message is taken, an email is sent to the relevant stakeholder manager and to the project area email inbox.

If the call is urgent, the call will be diverted by the answer service through to a member of the project team. This works by way of a list of pre-identified people who are equipped to respond, such as the site manager, construction manager or project manager. The answer service carries on through the list until the call is answered by a team member.

5.9 Incident Management

The FH Emergency Management and Environmental Incident procedures (required to be included as part of the CEMP) for the Project will outline and describe how emergencies and potential crisis situations will be managed. It will ensure that any further harm to a person, property, the environment, reputation or loss is minimised.

A crisis or emergency is a potential or actual incident that:

- Poses significant harm to people, property, the environment or the local community; and
- Requires assistance from external emergency service agencies.

It is not a small-scale incident that can be managed without the mobilisation of the Incident/Crisis Management team and without the assistance of external emergency agencies. For example, a first aid injury or small spill.

In the event of a crisis or emergency, members of the Project Team and any sub-contractors will:

- Activate the Emergency Response and Incident Management Plan which details all Health and Safety processes;
- Notify the AT Project Director immediately (within 10 minutes);
- Provide the AT Project Director with all relevant information that may be needed as a result of an incident; and
- Provide the appropriate senior experienced personnel to support AT in responding to or meeting with the community, media or public.

FH and its contractors must not contact or provide information to any person, media or public, other than that which is required to directly manage the incident or to comply with the law, without the prior written approval of the AT Project Director.

In the event of an incident generating a large number of calls or emails requiring action, AT and the FH Stakeholder Manager will take ownership of prioritising and delegating responses to the project team.

5.10 Media Enquires

All media enquiries will be channelled through the AMETI Communications and Engagement Manager, who will discuss the recommended approach with the AT AMETI EB1 Project Director.

The media spokesperson for the Project is the AT AMETI EB1 Project Director. The communications contact on behalf of the media spokesperson is the AMETI Communications and Engagement Manager:

The FH team is required to adhere to AT's media protocols which include:

- Reporting to AT immediately on any matters which may be contentious or affect the reputation of AT or the Project;
 - Providing a very quick turnaround on facts if AT is required to front the camera;
 - The FH Project Director collaborating with the AMETI Communications and Engagement Manager to be the approved spokesperson for specific technical responses to media enquiries;
 - Briefing FH staff, including subcontractors to adhere to the media protocols. Briefings will occur as part of the staff induction;
 - Not communicate with the media or responding to media enquiries without express approval from AT; and
 - Providing full support to the AT AMETI Communications Team for any media activities including providing resources, personnel and promotional materials or assisting with event management and site access.
- AT's requirements for media activities will be discussed and organised at the regular meetings between the FH Stakeholder Manager and the AMETI Communications and Engagement Manager.

The following process outlines how media enquiries will be handled.

Table 6: Process for managing media enquiries

Stage	Description
1	FH and subcontractors direct all media enquiries to the FH Stakeholder Manager.
2	The FH Stakeholder Manager forwards the enquiries through to the AMETI Communications and Engagement Manager, together with any relevant information.
3	The FH Stakeholder Manager assists the AMETI Communications and Engagement Manager to prepare responses to the enquiries.
4	If appropriate, a combined FAQ sheet is prepared between AT and FH with standard explanations, descriptions and responses to common media issues or questions.

5.11 Media Releases

Media releases/invitations will be issued around key milestones, major works that will have an impact on the local or wider public and support the project objectives.

Releases will be prepared by the AMETI Communications and Engagement Manager, reviewed by the AT Project Director and approved by AT. Any media releases mentioning key stakeholders will be approved by the said stakeholder prior to release. Releases will be issued by the AT media manager, posted on the AT project website and supported by social media links.

FH will support AT's handling of all media enquiries and opportunities. The following process outlines how media releases will be produced.

Table 7: Process for producing media releases

Stage	Description
1	The AMETI Communications and Engagement Manager identifies opportunities for positive stories such as programme milestones. These help to raise the profile of the Project and assist in communicating messages to a wider range of stakeholders.
2	The AMETI Communications and Engagement Manager prepares media releases in collaboration with the FH Stakeholder Manager and Project Director.
3	All potential opportunities are provided to the AMETI Communications and Engagement Manager for consideration and a final decision.
4	Media releases are issued by the AMETI Communications and Engagement Manager, posted on the AT project website and supported by social media.
5	Electronic versions of articles and features are circulated to the contractors and AT staff.
6	AT retains a copy of all media articles and features electronically on Darzin.

5.12 Official Information Requests and Privacy Act

FH will assist AT to comply with all Project related requests received under the Local Government Official Information and Meetings Act and Privacy Act in accordance with the requirements of the Local Government Act 2002.

AT will collate the information, respond to the requestor and record the request and information provided in a database.

FH is required to:

- Provide the required information to AT in a timely manner; and
- Not release any information directly to the person making the request.

5.13 Risks and Opportunities

AT's guiding principles for the management of issues and risks are as follows:

- Prevention – We will anticipate potential community impacts and manage risk at the source through effective process design, and through clear and open communication between the various participants and the community.
- Planning – We will conduct detailed planning for known issues, such as noise, property access, traffic and commuter disruptions, which have specific impacts on particular stakeholders or sectors of the community.
- Proactive behaviours – Our 'early warning/ no surprises' approach to community relations is predicted on being proactive and engaging early and actively with those who may be affected by our works. This will assist the AMETI Project Team to prevent potential risks from becoming issues and also enable community feedback to inform planning and prevention strategies.
- Active listening – We will listen to the community to understand specific issues and concerns and work with stakeholders, affected parties and community members to develop practical and targeted mitigation measures that will address those issues.

Risks around stakeholder engagement will be managed through the Project risk management process. All stakeholder risks are to be included in the Project risk register, monthly risk review meetings and reporting as appropriate.

5.14 Website, Social Media and Newsletters

The dedicated AMETI EB1 Project page on the AT website will be an integral part of the Project's communications strategy. It will be a 'one stop shop' for vital and interesting information for both the local community and wider audience. It will also provide links to other information produced by AT and FH which will include, but not be limited to, the CCP (this plan), newsletters, brochures and social media posts.

FH will provide information to the AT AMETI Communications Team that can be used for the website and newsletters.

5.15 Photography

Release forms will be signed by persons captured in any photographs or videos proposed for external use.

Time-lapse photography is planned.

5.16 Engagement Database - Darzin

Darzin, the communications database, is essential for recording the details of engagement with all parties. The database is already in place and will be added to as required during the course of the Project to reflect successive communications.

Appropriate team members will be trained in the intricacies of the database and the setup of it to ensure consistency throughout the project life.

All stakeholder meetings will be documented, and where appropriate, agendas provided. The meeting notes will be recorded both in the relevant stakeholder file in Darzin, and where further actions are required, these are to be logged and the appropriate action taken to close them out.

All contacts with the community and the actions resulting from these contacts need to be recorded in the database within 24 hours.

The AMETI Communications and Engagement Manager will work closely with the project delivery team to monitor progress and identify activities that may impact on stakeholders. This includes helping the project

team understand activities that may cause particular concern to the community, such as activities in close proximity to culturally and environmentally sensitive sites.

The contact details stored in the database must be kept up to date and key stakeholder organisations regularly reviewed to ensure currency e.g. following elections.

5.17 Signage and Hoardings

Signage will be used to inform the local community and the public about the Project including:

- Why the works are being performed and by whom;
- Provide directional and safety information, particularly about transport detours (including traffic management measures, changes to the road networks and layouts);
- Provide opportunities for learning (i.e. providing interpretative information with regard to Mokoia Pā, cultural values and stormwater treatments used for mitigation for the Project).
- Contact information and how to find out more about the Project.

FH will:

- Ensure that site signage aligns with AT branding guidelines;
- Place signs to be located in prominent places throughout the Project area; and
- Position signs well in advance of works or detours commencing.

Kirby the project Mascot – used for Way-finding.

AT will remain responsible for artwork, wayfinding and messaging on hoardings.

5.18 General Notification Periods

The following notification periods apply when engaging with the community:

- General construction - Three days for any activity with the potential to impact on any member of the community.
- Signage - Five days for signage to be erected prior to changes in access and traffic arrangements or as stipulated in associated TMPs e.g. pedestrian routes, cycle ways, bus stops, traffic conditions.
- Emergency works – provide written notification and door knocking of immediately adjacent properties affected within two hours of commencing works.
- Traffic and access – Five days' notice via email to all key traffic and transport stakeholders.
- Night works – Ten days' notice to community, including social media.

5.19 Inductions and Training

Community and culture will form part of the inductions package for the project. All personnel working on the project will be trained on the communication requirements, with a particular focus on incident management, incident reporting, community enquiries/complaints and media enquiries.

Inductions will be regularly updated to address any actions taken in response to community issues.

Mana whenua cultural inductions will be prepared for the construction team at the kick off of on-site activities and at each new work phase. A section on culture will also form part of the standard project induction.

Stakeholder and community specific training sessions will be held with the full team at least once per year to ensure the team remain fresh on processes and actions.

5.20 Key Messages and Q & As

The key messages reflect the project objectives and form the basis for the Project's overall strategy for informing and getting feedback from those impacted. While these will remain constant throughout the Project duration and beyond, they will at times be supported by other messages that reflect construction activity and/or other influencing factors.

5.21 Roles and Responsibilities

FH and AT will work together in the following ways:

- During construction, all communications with local communities and stakeholders will be the responsibility of FH, in collaboration with AT.
- AT will be responsible for communicating with the wider Auckland population and key political and cultural stakeholder groups, including but not limited to business associations, residents' groups and mana whenua.

- FH will provide regular information and updates to AT on Project progress.
- All the Project personnel will be advocates for the Project and receive ongoing public relations, issues, crisis and media training for the construction phase.
- The Project will be closely monitored to ensure stakeholder satisfaction.

The table below sets out the key team members relevant to the area of community and stakeholder engagement.

Table 8: Key team members

Name and Role	Responsibilities
Norman Collier AT AMETI EB1 Project Director	<p>Providing strategic direction to all work streams to provide an integrated approach to the delivery of the Project.</p> <p>Overseeing project planning, acquisition, design, constructability, procurement, stakeholder engagement, communications, programme and financial control.</p> <p>Identifying and managing project risks and issues.</p> <p>Regular reporting to the AT board, AT Senior Management and Project Control Group (PCG).</p>
Matt Poland AT AMETI Communications and Engagement Manager	<p>Main point of contact for anyone affected by or interested in the Project until the commencement of the construction phase of the Project and establishment of a 24-hour contact service.</p> <p>Informing the affected parties of Project progress and likely commencement of construction works and programme.</p> <p>Managing AT AMETI Communications and Stakeholders.</p> <p>Approving all designs with regard to communication materials and signage for the Project.</p>
Irene Vano AT AMETI Communications Consultation Coordinator	<p>Supporting the AT AMETI Communications and Engagement Manager.</p>
Yvette Nichols AMETI TDM Engagement Coordinator	<p>Supporting the AT AMETI Communications and Engagement Manager.</p> <p>Engaging with schools and businesses to develop travel plans and communicate the TDM initiative with stakeholders and the community.</p>
Greg Horne Stakeholder Relationship Advisor	<p>Supporting the AT AMETI Communications and Engagement Manager.</p> <p>Providing support through mail drops and face to face communications with affected parties.</p> <p>Managing the stakeholder issues register.</p>
Nicola Bishop AT Principal Planner	<p>Main point of contact for implementation of, and compliance with designation and resource consent conditions.</p> <p>Oversight for any additional consent requirements.</p> <p>Main point of contact with Auckland Council and Heritage New Zealand Pouhere Taonga.</p>
Patrick Morris AT Health and Safety Manager	<p>Health and Safety regime for the Project.</p>

Name and Role	Responsibilities
	Being informed of all incidents, according to severity and time scales as outlined in the Health and Safety Plan for the contractor.
Jon Bennetts AT Communication and engagement support	Supporting the AT AMETI Communications and Engagement Manager. Providing technical support through presentations and face to face communications with affected parties.
Isabella Wang Compliance Monitoring Officer	Regulatory Compliance
James Weller FH Project Manager	Contractor construction delivery. Building relationships through engaging and communicating with key stakeholders. Building trust in the team's capabilities by personally leading the process and providing expertise in specialist areas. Alerting the Project Ambassador to stakeholder groups, individuals or issues that need attention. Providing technical information, construction progress/Project milestone information to AT for briefings and the AMETI Hui's (kaitiaki forum). Leading the response to issues management and crisis management. Ensuring that subcontractors adhere to the contractor Project communication protocols and procedures.
Jenny Scott – FH Stakeholder Manager 027 703 5284 Jenny.Scott@fultonhogan.com PO Box 11-900, Ellerslie, Auckland 1542	Main point of contact for anyone affected by or interested in the Project during the construction phase. Establishment of a 24-hour contact service. Immediately reporting high risk issues to the AT Communications team. See 'Reporting high risk issues' below. Reporting weekly to AT at the Stakeholder and Communications meeting on all key community relations and stakeholder management issues. See 'Weekly reporting' below. Working with AT to assist in communicating with all stakeholders, affected parties, affected proximity parties, community and education facilities, and the community. Informing the community of Project progress and likely commencement of construction works and programme. Working with the Contractor Project Director to manage and track stakeholder relations and risks. Providing communications collateral and strategic advice to the Project Director on critical stakeholder engagement, communications and relationship building.

Name and Role	Responsibilities
	<p>Coordinating with key communications contacts at lead organisations associated with the Project, including AT.</p> <p>Assisting in delivering communication activities to stakeholders as required.</p> <p>Assisting the AT AMETI Communications team with media enquiries.</p> <p>Managing stakeholder enquiries and complaints.</p>
<p>FH Communications Team</p> <p>0800 300 007</p> <p>Ameti@fultonhogan.com</p>	<p>Briefing the subcontractors at mandatory site inductions. This includes the standards and requirements for community relations and protocols to follow when approached by a member of the public or the media.</p> <p>Ensuring that subcontractors follow project protocols on a day-to-day basis and that they behave appropriately in and around the site parameters.</p> <p>A dedicated contact person who will be responsible 24/7 for any public enquiries relating to the Project.</p>
<p>Jason Haggerty</p> <p>FH Environmental Manager</p>	<p>All interactions relating to environmental matters.</p>
<p>Kelly Foy</p> <p>FH Traffic Manager</p>	<p>All interactions relating to traffic management concerns.</p>
<p>FH Staff and Subcontractors</p>	<p>Directing all public and media enquiries to the contractor Project Ambassador.</p> <p>Identifying themselves as a member of the project team and the company they work for.</p> <p>Using approved haul routes so that access to and egress from the sites is undertaken with minimum disruption to the local community.</p> <p>Parking only in designated project parking areas.</p> <p>Working within approved construction hours.</p> <p>Working within the conditions specified in the Permits to Notify.</p> <p>Showing consideration for stakeholders and community members at all time while working on the Project and when travelling to and from the Project site.</p>

6 Implementation

6.1 Overall Implementation Approach

The AMETI Communications and Engagement Manager will work closely with the Project delivery team to monitor construction progress and identify activities that may impact on stakeholders, affected parties, affected in proximity parties located in the 'Community of Interest' and/or wider community.

The communication and consultation programme aims to engage and inform the primary audience of local residents/businesses, affected and affected in proximity parties, stakeholders and road users about the Project before major construction commences. This will prioritise face-to face interaction and access to information to ensure affected parties are aware of the Project scope and effects and feel confident in the ability of AT and the contractor to deliver the Project with the least possible impact.

Once general information on the Project has been disseminated, the FH Stakeholder Manager will liaise directly with affected parties on a regular basis.

A secondary audience of the wider Auckland population will be engaged through wider reaching communications channels including but not limited to outdoor advertising, social media, print media and events. The key messages for this audience will be the benefits of the Project and advanced communication of changes to road function to enable informed choice and ensure travel-related information is readily available.

7 Appendix A - A list of stakeholders directly affected and affected in proximity parties

PROPERTY ADDRESS	SUBURB	POST CODE
1 Cleary Road	Panmure	Auckland 1060
64A Pakuranga Road	Pakuranga	Auckland 2010
45/68 Mountain Road	Mount Wellington	Auckland 1072
1 Dayspring Way	Pakuranga	Auckland 2010
1 Kerswill Place	Pakuranga	Auckland 2010
1 Dowling Place	Pakuranga	Auckland 2010
1 Millen Avenue	Pakuranga	Auckland 2010
1/11 Monaco Place	Mount Wellington	Auckland 1072
1 Monaco Place	Mount Wellington	Auckland 1072
21 Pakuranga Road	Pakuranga	Auckland 2010
1 Pakuranga Road	Pakuranga	Auckland 2010
3/34 Latham Avenue	Pakuranga	Auckland 2010
2/27 Pakuranga Road	Pakuranga	Auckland 2010
1 Tamaki Bay Drive	Pakuranga	Auckland 2010
30 Queens Road	Panmure	Auckland 1072
1/10 Basin View Lane	Panmure	Auckland 1072
1 Sunset View Road	Panmure	Auckland 1072
1/10 Dayspring Way	Pakuranga	Auckland 2010
1/10 Mountain Road	Mount Wellington	Auckland 1072
1/10 Riverlea Avenue	Pakuranga	Auckland 2010
1/11 Browns Avenue	Pakuranga	Auckland 2010
2/11 Dayspring Way	Pakuranga	Auckland 2010
1/101 Pakuranga Road	Pakuranga	Auckland 2010
A/11 Latham Avenue	Pakuranga	Auckland 2010
11 Pakuranga Road	Pakuranga	Auckland 2010
1/11 Dayspring Way	Pakuranga	Auckland 2010
1/13 Latham Avenue	Pakuranga	Auckland 2010
1/13 Monaco Place	Mount Wellington	Auckland 1072
1/11 Monaco Place	Mount Wellington	Auckland 1072
1/9 Millen Avenue	Pakuranga	Auckland 2010
1/12 Ireland Road	Panmure	Auckland 1060
1/22 Church Crescent	Panmure	Auckland 1072
1/12 Millen Avenue	Pakuranga	Auckland 2010
2/15 Pakuranga Road	Pakuranga	Auckland 2010
1/16 Kerswill Place	Pakuranga	Auckland 2010
1/16 Latham Avenue	Pakuranga	Auckland 2010
2/16 Latham Avenue	Pakuranga	Auckland 2010
1/13 Williams Avenue	Pakuranga	Auckland 2010
1/17 Dowling Place	Pakuranga	Auckland 2010
1/13A Pakuranga Road	Pakuranga	Auckland 2010
1/17 Riverlea Avenue	Pakuranga	Auckland 2010
1/14 Dowling Place	Pakuranga	Auckland 2010
1/18 Domain Road	Panmure	Auckland 1072
1/14 Latham Avenue	Pakuranga	Auckland 2010
1/19 Lagoon Drive	PANMURE	Auckland 1072
1/14 Riverlea Avenue	Pakuranga	Auckland 2010
1/19 Williams Avenue	Pakuranga	Auckland 2010
1/15 Dowling Place	Pakuranga	Auckland 2010
1/21 Latham Avenue	Pakuranga	Auckland 2010

1/15 Latham Avenue	Pakuranga	Auckland 2010
1/22 Riverlea Avenue	Pakuranga	Auckland 2010
1/15 Pakuranga Road	Pakuranga	Auckland 2010
1/24 Mountain Road	Mount Wellington	Auckland 1072
1/16 Bridge Street	Panmure	Auckland 1072
89/68 Mountain Road	Mount Wellington	Auckland 1072
1/25 Lagoon Drive	Panmure	Auckland 1072
1/27 Lagoon Drive	Panmure	Auckland 1072
1/27A Pakuranga Road	Pakuranga	Auckland 2010
1 Millen Avenue	Pakuranga	Auckland 2010
1/17 Kerswill Place	Pakuranga	Auckland 2010
11 Millen Avenue	Pakuranga	Auckland 2010
1/17 Latham Avenue	Pakuranga	Auckland 2010
25 Pakuranga Road	Pakuranga	Auckland 2010
25A Pakuranga Road	Pakuranga	Auckland 2010
27B Pakuranga Road	Pakuranga	Auckland 2010
3 Millen Avenue	Pakuranga	Auckland 2010
1/19 Latham Avenue	Pakuranga	Auckland 2010
3I Mountain Road	Mount Wellington	Auckland 1072
1/30 Latham Avenue	Pakuranga	Auckland 2010
1/2 Browns Avenue	Pakuranga	Auckland 2010
1/32 Riverlea Avenue	Pakuranga	Auckland 2010
1/2 Monaco Place	Mount Wellington	Auckland 1072
1/33 Kerswill Place	Pakuranga	Auckland 2010
45 Pakuranga Road	Pakuranga	Auckland 2010
1/20 Riverlea Avenue	Pakuranga	Auckland 2010
1/36 Latham Avenue	Pakuranga	Auckland 2010
1/38 Latham Avenue	Pakuranga	Auckland 2010
52A Lagoon Drive	Panmure	Auckland 1072
1/4 Dillimore Avenue	Pakuranga	Auckland 2010
1/22 Church Crescent	Panmure	Auckland 1072
1/40 Latham Avenue	Pakuranga	Auckland 2010
1/23 Browns Avenue	Pakuranga	Auckland 2010
1/44 Riverlea Avenue	Pakuranga	Auckland 2010
1/23 Latham Avenue	Pakuranga	Auckland 2010
1/49 Church Crescent	Panmure	Auckland 1072
1/49 Mountain Road	Mount Wellington	Auckland 1072
1/24 Riverlea Avenue	Pakuranga	Auckland 2010
1/52 Jellicoe Road	Mount Wellington	Auckland 1072
1/53 Pakuranga Road	Pakuranga	Auckland 2010
1/25 Williams Avenue	Pakuranga	Auckland 2010
55 Mountain Road	Mount Wellington	Auckland 1072
1/27 Browns Avenue	Pakuranga	Auckland 2010
1/6 Monaco Place	Mount Wellington	Auckland 1072
1/27 Kerswill Place	Pakuranga	Auckland 2010
1/60 Jellicoe Road	Mount Wellington	Auckland 1072
1/7 Mountain Road	Mount Wellington	Auckland 1072
1/27 Pakuranga Road	Pakuranga	Auckland 2010
1/81A Pakuranga Road	Pakuranga	Auckland 2010
8/27 Pakuranga Road	Pakuranga	Auckland 2010

1/29 Browns Avenue	Pakuranga	Auckland 2010
1/9 Latham Avenue	Pakuranga	Auckland 2010
1/2B Dowling Place	Pakuranga	Auckland 2010
1/9 Mountain Road	Mount Wellington	Auckland 1072
10 Browns Avenue	Pakuranga	Auckland 2010
51 Pakuranga Road	Pakuranga	Auckland 2010
1/31 Pakuranga Road	Pakuranga	Auckland 2010
10 Dowling Place	Pakuranga	Auckland 2010
1/31 Tamaki Bay Drive	Pakuranga	Auckland 2010
10 Latham Avenue	Pakuranga	Auckland 2010
1/32 Latham Avenue	Pakuranga	Auckland 2010
10 Monaco Place	Mount Wellington	Auckland 1072
3C Mountain Road	Mount Wellington	Auckland 1072
16 Mountain Road	Mount Wellington	Auckland 1072
1/33 Pakuranga Road	Pakuranga	Auckland 2010
10 Tamaki Bay Drive	Pakuranga	Auckland 2010
1/34 Latham Avenue	Pakuranga	Auckland 2010
5/9 Mountain Road	Mount Wellington	Auckland 1072
1/36 Church Crescent	Panmure	Auckland 1072
50B Riverlea Avenue	Pakuranga	Auckland 2010
1/36 Church Crescent	Panmure	Auckland 1072
1/10 Williams Avenue	Pakuranga	Auckland 2010
1/4 Browns Avenue	Pakuranga	Auckland 2010
2/68 Mountain Road	Mount Wellington	Auckland 1072
10/9 Mountain Road	Mount Wellington	Auckland 1072
1/101 Pakuranga Road	Pakuranga	Auckland 2010
50/68 Mountain Road	Mount Wellington	Auckland 1072
1/4 Williams Avenue	Pakuranga	Auckland 2010
103 Pakuranga Road	Pakuranga	Auckland 2010
B/55 Pakuranga Road	Pakuranga	Auckland 2010
1/42 Church Crescent	Panmure	Auckland 1072
1/43 Pakuranga Road	Pakuranga	Auckland 2010
10A Browns Avenue	Pakuranga	Auckland 2010
1/44 Latham Avenue	Pakuranga	Auckland 2010
62 Queens Road	Panmure	Auckland 1072
2/10 Williams Avenue	Pakuranga	Auckland 2010
1/45A Pakuranga Road	Pakuranga	Auckland 2010
48/68 Mountain Road	Mount Wellington	Auckland 1072
1/46 Latham Avenue	Pakuranga	Auckland 2010
11 Kerswill Place	Pakuranga	Auckland 2010
1/48 Latham Avenue	Pakuranga	Auckland 2010
2/9 Mountain Road	Mount Wellington	Auckland 1072
1/11 Tamaki Bay Drive	Pakuranga	Auckland 2010
1/46 Latham Avenue	Pakuranga	Auckland 2010
1/5 Dowling Place	Pakuranga	Auckland 2010
11 Williams Avenue	Pakuranga	Auckland 2010
1/5 Kerswill Place	Pakuranga	Auckland 2010
11/9 Mountain Road	Mount Wellington	Auckland 1072
1/51 Riverlea Avenue	Pakuranga	Auckland 2010
58 Queens Road	Panmure	Auckland 1072

1/55A Pakuranga Road	Pakuranga	Auckland 2010
1/52 Latham Avenue	Pakuranga	Auckland 2010
6/27 Pakuranga Road	Pakuranga	Auckland 2010
46 Queens Road	Panmure	Auckland 1072
1/54 Jellicoe Road	Mount Wellington	Auckland 1072
52/68 Mountain Road	Mount Wellington	Auckland 1072
1/55 Pakuranga Road	Pakuranga	Auckland 2010
7/27 Pakuranga Road	Pakuranga	Auckland 2010
1/55A Pakuranga Road	Pakuranga	Auckland 2010
2/9 Latham Avenue	Pakuranga	Auckland 2010
1/59 Pakuranga Road	Pakuranga	Auckland 2010
11A Kerswill Place	Pakuranga	Auckland 2010
1/6 Browns Avenue	Pakuranga	Auckland 2010
11A Pakuranga Road	Pakuranga	Auckland 2010
1/6 Dillimore Avenue	Pakuranga	Auckland 2010
12 Monaco Place	Mount Wellington	Auckland 1072
12 Mountain Road	Mount Wellington	Auckland 1072
1/6 Mountain Road	Mount Wellington	Auckland 1072
1/12 Tamaki Bay Drive	Pakuranga	Auckland 2010
3/53 Pakuranga Road	Pakuranga	Auckland 2010
1/68 Mountain Road	Mount Wellington	Auckland 1072
12 Williams Avenue	Pakuranga	Auckland 2010
1/7 Millen Avenue	Pakuranga	Auckland 2010
3E Mountain Road	Mount Wellington	Auckland 1072
1/48 Latham Avenue	Pakuranga	Auckland 2010
1/7 Pakuranga Road	Pakuranga	Auckland 2010
18/68 Mountain Road	Mount Wellington	Auckland 1072
1/75 Pakuranga Road	Pakuranga	Auckland 2010
12A Tamaki Bay Drive	Pakuranga	Auckland 2010
1/7A Mountain Road	Mount Wellington	Auckland 1072
C/44 Latham Avenue	Pakuranga	Auckland 2010
1/8 Dillimore Avenue	Pakuranga	Auckland 2010
13 Dayspring Way	Pakuranga	Auckland 2010
1/8 Latham Avenue	Pakuranga	Auckland 2010
13 Dowling Place	Pakuranga	Auckland 2010
13 Riverlea Avenue	Pakuranga	Auckland 2010
1/8 Williams Avenue	Pakuranga	Auckland 2010
13 Tamaki Bay Drive	Pakuranga	Auckland 2010
90/68 Mountain Road	Mount Wellington	Auckland 1072
12/68 Mountain Road	Mount Wellington	Auckland 1072
3F Mountain Road	Mount Wellington	Auckland 1072
1/9 Millen Avenue	Pakuranga	Auckland 2010
3G Mountain Road	Mount Wellington	Auckland 1072
10/68 Mountain Road	Mount Wellington	Auckland 1072
51A Pakuranga Road	Pakuranga	Auckland 2010
13B Pakuranga Road	Pakuranga	Auckland 2010
125 Queens Road	Panmure	Auckland 1072
14 Browns Avenue	Pakuranga	Auckland 2010
10 Pakuranga Road	Pakuranga	Auckland 2010
14 Kerswill Place	Pakuranga	Auckland 2010

14 Millen Avenue	Pakuranga	Auckland 2010
10/10 Basin View Lane	Panmure	Auckland 1072
1A Riverlea Avenue	Pakuranga	Auckland 2010
10/68 Mountain Road	Mount Wellington	Auckland 1072
14 Tamaki Bay Drive	Pakuranga	Auckland 2010
14 Williams Avenue	Pakuranga	Auckland 2010
84/68 Mountain Road	Mount Wellington	Auckland 1072
105 Pakuranga Road	Pakuranga	Auckland 2010
1/4 Williams Avenue	Pakuranga	Auckland 2010
109-113 Queens Road	Panmure	Auckland 1072
1/14 Dowling Place	Pakuranga	Auckland 2010
1/14 Latham Avenue	Pakuranga	Auckland 2010
11 Domain Road	Panmure	Auckland 1072
2/14 Riverlea Avenue	Pakuranga	Auckland 2010
11 Dowling Place	Pakuranga	Auckland 2010
14C Bridge Street	Panmure	Auckland 1072
11 Forge Way	Mount Wellington	Auckland 1072
15 Browns Avenue	Pakuranga	Auckland 2010
1/45A Pakuranga Road	Pakuranga	Auckland 2010
15 Monaco Place	Mount Wellington	Auckland 1072
11 Millen Avenue	Pakuranga	Auckland 2010
15 Riverlea Avenue	Pakuranga	Auckland 2010
11 Riverlea Avenue	Pakuranga	Auckland 2010
15 Tamaki Bay Drive	Pakuranga	Auckland 2010
15 Williams Avenue	Pakuranga	Auckland 2010
11/10 Basin View Lane	Panmure	Auckland 1072
1A Dowling Place	Pakuranga	Auckland 2010
11/68 Mountain Road	Mount Wellington	Auckland 1072
1/29 Browns Avenue	Pakuranga	Auckland 2010
17E Pakuranga Road	Pakuranga	Auckland 2010
11-13 Lagoon Drive	Panmure	Auckland 1072
1/59 Pakuranga Road	Pakuranga	Auckland 2010
15A Lagoon Drive	Panmure	Auckland 1072
15A Pakuranga Road	Pakuranga	Auckland 2010
15A Williams Avenue	Pakuranga	Auckland 2010
12 Dayspring Way	Pakuranga	Auckland 2010
15B Lagoon Drive	Panmure	Auckland 1072
12 Dowling Place	Pakuranga	Auckland 2010
15B Pakuranga Road	Pakuranga	Auckland 2010
12 Kerswill Place	Pakuranga	Auckland 2010
5 Tamaki Bay Drive	Pakuranga	Auckland 2010
12 Latham Avenue	Pakuranga	Auckland 2010
21 Domain Road	Panmure	Auckland 1072
15C Pakuranga Road	Pakuranga	Auckland 2010
1/16 Browns Avenue	Pakuranga	Auckland 2010
12 Pakuranga Road	Pakuranga	Auckland 2010
12 Riverlea Avenue	Pakuranga	Auckland 2010
16 Church Crescent	Panmure	Auckland 1072
16 Domain Road	Panmure	Auckland 1072
12/10 Basin View Lane	Panmure	Auckland 1072

16 Dowling Place	Pakuranga	Auckland 2010
12/68 Mountain Road	Mount Wellington	Auckland 1072
85/68 Mountain Road	Mount Wellington	Auckland 1072
12/9 Mountain Road	Mount Wellington	Auckland 1072
16 Riverlea Avenue	Pakuranga	Auckland 2010
120 Queens Road	Panmure	Auckland 1072
86/68 Mountain Road	Mount Wellington	Auckland 1072
121 Queens Road	Panmure	Auckland 1072
16 Williams Avenue	Pakuranga	Auckland 2010
12-14 Queens Road	Panmure	Auckland 1072
17/68 Mountain Road	Mount Wellington	Auckland 1072
125 Queens Road	Panmure	Auckland 1072
16/9 Mountain Road	Mount Wellington	Auckland 1072
1/75 Pakuranga Road	Pakuranga	Auckland 2010
13 Bridge Street	Panmure	Auckland 1072
16A Riverlea Avenue	Pakuranga	Auckland 2010
43/68 Mountain Road	Mount Wellington	Auckland 1072
69/68 Mountain Road	Mount Wellington	Auckland 1072
13 Domain Road	Panmure	Auckland 1072
16 Tamaki Bay Drive	Pakuranga	Auckland 2010
16A Tamaki Bay Drive	Pakuranga	Auckland 2010
13 Pakuranga Road	Pakuranga	Auckland 2010
1/8 Latham Avenue	Pakuranga	Auckland 2010
2/16 Browns Avenue	Pakuranga	Auckland 2010
8 Basin View Lane	Panmure	Auckland 1072
13/10 Basin View Lane	Panmure	Auckland 1072
21 Mountain Road	Mount Wellington	Auckland 1072
13/68 Mountain Road	Mount Wellington	Auckland 1072
38 Church Crescent	Panmure	Auckland 1072
13/9 Mountain Road	Mount Wellington	Auckland 1072
2 Millen Avenue	Pakuranga	Auckland 2010
17 Lagoon Drive	Panmure	Auckland 1072
13C Pakuranga Road	Pakuranga	Auckland 2010
17 Monaco Place	Mount Wellington	Auckland 1072
17 Pakuranga Road	Pakuranga	Auckland 2010
14 Church Crescent	Panmure	Auckland 1072
3Q Mountain Road	Mount Wellington	Auckland 1072
2A Dowling Place	Pakuranga	Auckland 2010
9 Tamaki Bay Drive	Pakuranga	Auckland 2010
14 Pakuranga Road	Pakuranga	Auckland 2010
17 Tamaki Bay Drive	Pakuranga	Auckland 2010
17 Williams Avenue	Pakuranga	Auckland 2010
14/10 Basin View Lane	Panmure	Auckland 1072
17/9 Mountain Road	Mount Wellington	Auckland 1072
14/68 Mountain Road	Mount Wellington	Auckland 1072
23/68 Mountain Road	Mount Wellington	Auckland 1072
14/9 Mountain Road	Mount Wellington	Auckland 1072
24A Mountain Road	Mount Wellington	Auckland 1072
14A Bridge Street	Panmure	Auckland 1072
74/68 Mountain Road	Mount Wellington	Auckland 1072

14B Bridge Street	Panmure	Auckland 1072
29 Pakuranga Road	Pakuranga	Auckland 2010
17A Pakuranga Road	Pakuranga	Auckland 2010
17B Pakuranga Road	Pakuranga	Auckland 2010
15 Dayspring Way	Pakuranga	Auckland 2010
17C Pakuranga Road	Pakuranga	Auckland 2010
15 Domain Road	Panmure	Auckland 1072
17G Domain Road	Panmure	Auckland 1072
15 Forge Way	Mount Wellington	Auckland 1072
17I Domain Road	Panmure	Auckland 1072
1-5 Jellicoe Road	Mount Wellington	Auckland 1072
17J Domain Road	Panmure	Auckland 1072
15 Kerswill Place	Pakuranga	Auckland 2010
1/2B Dowling Place	Pakuranga	Auckland 2010
18 Church Crescent	Panmure	Auckland 1072
3/43 Pakuranga Road	Pakuranga	Auckland 2010
18 Dowling Place	Pakuranga	Auckland 2010
1/15 Pakuranga Road	Pakuranga	Auckland 2010
15/10 Basin View Lane	Panmure	Auckland 1072
18 Mountain Road	Mount Wellington	Auckland 1072
15/68 Mountain Road	Mount Wellington	Auckland 1072
2/4 Latham Avenue	Pakuranga	Auckland 2010
15/9 Mountain Road	Mount Wellington	Auckland 1072
18 Williams Avenue	Pakuranga	Auckland 2010
15-17 Bridge Street	Panmure	Auckland 1072
30 Riverlea Avenue	Pakuranga	Auckland 2010
1 Monaco Place	Mount Wellington	Auckland 1072
18A Riverlea Avenue	Pakuranga	Auckland 2010
18B Mountain Road	Mount Wellington	Auckland 1072
19 Browns Avenue	Pakuranga	Auckland 2010
19 Dowling Place	Pakuranga	Auckland 2010
19 Kerswill Place	Pakuranga	Auckland 2010
15W Williams Avenue	Pakuranga	Auckland 2010
2/12 Millen Avenue	Pakuranga	Auckland 2010
19 Riverlea Avenue	Pakuranga	Auckland 2010
19 Tamaki Bay Drive	Pakuranga	Auckland 2010
13/68 Mountain Road	Mount Wellington	Auckland 1072
19/68 Mountain Road	Mount Wellington	Auckland 1072
16 Mountain Road	Mount Wellington	Auckland 1072
16 Pakuranga Road	Pakuranga	Auckland 2010
19/9 Mountain Road	Mount Wellington	Auckland 1072
16 Queens Road	Panmure	Auckland 1072
61 Queens Road	Panmure	Auckland 1072
19A Pakuranga Road	Pakuranga	Auckland 2010
16 Tamaki Bay Drive	Pakuranga	Auckland 2010
1A Latham Avenue	Pakuranga	Auckland 2010
17C Domain Road	Panmure	Auckland 1072
16/10 Basin View Lane	Panmure	Auckland 1072
3/1 Latham Avenue	Pakuranga	Auckland 2010
16/68 Mountain Road	Mount Wellington	Auckland 1072

50 Latham Avenue	Pakuranga	Auckland 2010
2 Basin View Lane	Panmure	Auckland 1072
29A Pakuranga Road	Pakuranga	Auckland 2010
58A Jellicoe Road	Mount Wellington	Auckland 1072
16A-18 Queens Road	Panmure	Auckland 1072
2 Sunset View Road	Panmure	Auckland 1072
17 Browns Avenue	Pakuranga	Auckland 2010
2/10 Riverlea Avenue	Pakuranga	Auckland 2010
1/11 Dayspring Way	Pakuranga	Auckland 2010
2/11 Monaco Place	Mount Wellington	Auckland 1072
2/11 Pakuranga Road	Pakuranga	Auckland 2010
17 Pleasant View Road	Mount Wellington	Auckland 1072
1/12 Ireland Road	Panmure	Auckland 1060
2/12 Ireland Road	Panmure	Auckland 1060
12/9 Mountain Road	Mount Wellington	Auckland 1072
17/10 Basin View Lane	Panmure	Auckland 1072
73 Pakuranga Road	Pakuranga	Auckland 2010
2/13 Monaco Place	Mount Wellington	Auckland 1072
17/68 Mountain Road	Mount Wellington	Auckland 1072
2/13 Williams Avenue	Pakuranga	Auckland 2010
17A Domain Road	Panmure	Auckland 1072
2/15 Latham Avenue	Pakuranga	Auckland 2010
2/17 Dowling Place	Pakuranga	Auckland 2010
17B Domain Road	Panmure	Auckland 1072
2/17 Latham Avenue	Pakuranga	Auckland 2010
2/17 Riverlea Avenue	Pakuranga	Auckland 2010
17C Domain Road	Panmure	Auckland 1072
2 Williams Avenue	Pakuranga	Auckland 2010
2A Williams Avenue	Pakuranga	Auckland 2010
17D Domain Road	Panmure	Auckland 1072
1/43 Pakuranga Road	Pakuranga	Auckland 2010
2/2 Browns Avenue	Pakuranga	Auckland 2010
17E Domain Road	Panmure	Auckland 1072
2/2 Dillimore Avenue	Pakuranga	Auckland 2010
2/2 Monaco Place	Mount Wellington	Auckland 1072
17E Pakuranga Road	Pakuranga	Auckland 2010
17F Domain Road	Panmure	Auckland 1072
2/2 Tamaki Bay Drive	Pakuranga	Auckland 2010
2/20 Dowling Place	Pakuranga	Auckland 2010
1/14 Riverlea Avenue	Pakuranga	Auckland 2010
2/21 Latham Avenue	Pakuranga	Auckland 2010
13/9 Mountain Road	Mount Wellington	Auckland 1072
14/9 Mountain Road	Mount Wellington	Auckland 1072
17K Domain Road	Panmure	Auckland 1072
2/23 Latham Avenue	Pakuranga	Auckland 2010
17L Domain Road	Panmure	Auckland 1072
2/24 Mountain Road	Mount Wellington	Auckland 1072
2/11 Dowling Place	Pakuranga	Auckland 2010
2/25 Williams Avenue	Pakuranga	Auckland 2010
18 Kerswill Place	Pakuranga	Auckland 2010

2/27 Kerswill Place	Pakuranga	Auckland 2010
18 Latham Avenue	Pakuranga	Auckland 2010
2/27 Lagoon Drive	Panmure	Auckland 1072
2/27A Pakuranga Road	Pakuranga	Auckland 2010
2/32 Latham Avenue	Pakuranga	Auckland 2010
2/36 Latham Avenue	Pakuranga	Auckland 2010
18/10 Basin View Lane	Panmure	Auckland 1072
2/4 Browns Avenue	Pakuranga	Auckland 2010
2/4 Dillimore Avenue	Pakuranga	Auckland 2010
18/68 Mountain Road	Mount Wellington	Auckland 1072
18/9 Mountain Road	Mount Wellington	Auckland 1072
2/4 Monaco Place	Mount Wellington	Auckland 1072
2/4 Williams Avenue	Pakuranga	Auckland 2010
2/43 Pakuranga Road	Pakuranga	Auckland 2010
18R Browns Avenue	Pakuranga	Auckland 2010
2/44 Latham Avenue	Pakuranga	Auckland 2010
18R Pakuranga Road	Pakuranga	Auckland 2010
2/44 Riverlea Avenue	Pakuranga	Auckland 2010
19 Bridge Street	Panmure	Auckland 1072
1/2 Monaco Place	Mount Wellington	Auckland 1072
2/45A Pakuranga Road	Pakuranga	Auckland 2010
19 Domain Road	Panmure	Auckland 1072
2/46 Latham Avenue	Pakuranga	Auckland 2010
2/48 Latham Avenue	Pakuranga	Auckland 2010
2/49 Church Crescent	Panmure	Auckland 1072
19 Lagoon Drive	PANMURE	Auckland 1072
2/49 Mountain Road	Mount Wellington	Auckland 1072
19 Monaco Place	Mount Wellington	Auckland 1072
2/5 Dayspring Way	Pakuranga	Auckland 2010
19 Pakuranga Road	Pakuranga	Auckland 2010
2/5 Dowling Place	Pakuranga	Auckland 2010
1/51 Riverlea Avenue	Pakuranga	Auckland 2010
2/51 Riverlea Avenue	Pakuranga	Auckland 2010
19/10 Basin View Lane	Panmure	Auckland 1072
2/52 Jellicoe Road	Mount Wellington	Auckland 1072
2/52 Latham Avenue	Pakuranga	Auckland 2010
2/54 Jellicoe Road	Mount Wellington	Auckland 1072
19-23A Queens Road	Panmure	Auckland 1072
2/55A Pakuranga Road	Pakuranga	Auckland 2010
19A Bridge Street	Panmure	Auckland 1072
2/59 Pakuranga Road	Pakuranga	Auckland 2010
19A Domain Road	Panmure	Auckland 1072
2/6 Monaco Place	Mount Wellington	Auckland 1072
2/60 Jellicoe Road	Mount Wellington	Auckland 1072
19W Riverlea Avenue	Pakuranga	Auckland 2010
2/7A Mountain Road	Mount Wellington	Auckland 1072
1A Cleary Road	Panmure	Auckland 1060
2/81A Pakuranga Road	Pakuranga	Auckland 2010
2/11 Latham Avenue	Pakuranga	Auckland 2010
1A Dowling Place	Pakuranga	Auckland 2010

2/15 Dowling Place	Pakuranga	Auckland 2010
20 Browns Avenue	Pakuranga	Auckland 2010
1A Riverlea Avenue	Pakuranga	Auckland 2010
20 Church Crescent	Panmure	Auckland 1072
2 Dayspring Way	Pakuranga	Auckland 2010
20 Domain Road	Panmure	Auckland 1072
43 Queens Road	Panmure	Auckland 1072
2 Millen Avenue	Pakuranga	Auckland 2010
2 Pakuranga Road	Pakuranga	Auckland 2010
17 Pleasant View Road	Mount Wellington	Auckland 1072
1/20 Tamaki Bay Drive	Pakuranga	Auckland 2010
2 Tamaki Bay Drive	Pakuranga	Auckland 2010
19 Lagoon Drive	PANMURE	Auckland 1072
2 Williams Avenue	Pakuranga	Auckland 2010
3J Mountain Road	Mount Wellington	Auckland 1072
2/1 Latham Avenue	Pakuranga	Auckland 2010
2/36 Church Crescent	Panmure	Auckland 1072
2/10 Basin View Lane	Panmure	Auckland 1072
20A Latham Avenue	Pakuranga	Auckland 2010
2/10 Dayspring Way	Pakuranga	Auckland 2010
2/20 Riverlea Avenue	Pakuranga	Auckland 2010
21 Lagoon Drive	Panmure	Auckland 1072
21 Tamaki Bay Drive	Pakuranga	Auckland 2010
37 Pakuranga Road	Pakuranga	Auckland 2010
2/10 Williams Avenue	Pakuranga	Auckland 2010
2/101 Pakuranga Road	Pakuranga	Auckland 2010
22 Domain Road	Panmure	Auckland 1072
2/11 Browns Avenue	Pakuranga	Auckland 2010
44 Queens Road	Panmure	Auckland 1072
2/95 Pakuranga Road	Pakuranga	Auckland 2010
2/11 Dayspring Way	Pakuranga	Auckland 2010
2/11 Dowling Place	Pakuranga	Auckland 2010
22 Kerswill Place	Pakuranga	Auckland 2010
2/11 Latham Avenue	Pakuranga	Auckland 2010
1/13 Williams Avenue	Pakuranga	Auckland 2010
56 Jellicoe Road	Mount Wellington	Auckland 1072
22 Mountain Road	Mount Wellington	Auckland 1072
2/11 Tamaki Bay Drive	Pakuranga	Auckland 2010
22 Queens Road	Panmure	Auckland 1072
22 Tamaki Bay Drive	Pakuranga	Auckland 2010
A/63 Pakuranga Road	Pakuranga	Auckland 2010
2/12 Millen Avenue	Pakuranga	Auckland 2010
2/13 Latham Avenue	Pakuranga	Auckland 2010
22A Browns Avenue	Pakuranga	Auckland 2010
22A Mountain Road	Mount Wellington	Auckland 1072
1/17 Latham Avenue	Pakuranga	Auckland 2010
2/14 Dowling Place	Pakuranga	Auckland 2010
2/17 Kerswill Place	Pakuranga	Auckland 2010
2/14 Latham Avenue	Pakuranga	Auckland 2010
13 Domain Road	Panmure	Auckland 1072

15 Domain Road	Panmure	Auckland 1072
2/14 Riverlea Avenue	Pakuranga	Auckland 2010
2/15 Dowling Place	Pakuranga	Auckland 2010
23 Kerswill Place	Pakuranga	Auckland 2010
1/23 Browns Avenue	Pakuranga	Auckland 2010
23 Lagoon Drive	Panmure	Auckland 1072
2/15 Pakuranga Road	Pakuranga	Auckland 2010
2/16 Bridge Street	Panmure	Auckland 1072
23 Mountain Road	Mount Wellington	Auckland 1072
23 Riverlea Avenue	Pakuranga	Auckland 2010
2/16 Browns Avenue	Pakuranga	Auckland 2010
2/16 Kerswill Place	Pakuranga	Auckland 2010
23 Williams Avenue	Pakuranga	Auckland 2010
33/68 Mountain Road	Mount Wellington	Auckland 1072
2/16 Latham Avenue	Pakuranga	Auckland 2010
23A Mountain Road	Mount Wellington	Auckland 1072
2/17 Kerswill Place	Pakuranga	Auckland 2010
19-23A Queens Road	Panmure	Auckland 1072
23A Williams Avenue	Pakuranga	Auckland 2010
19 Monaco Place	Mount Wellington	Auckland 1072
24 Browns Avenue	Pakuranga	Auckland 2010
2/19 Lagoon Drive	PANMURE	Auckland 1072
4/52 Jellicoe Road	Mount Wellington	Auckland 1072
2/19 Latham Avenue	Pakuranga	Auckland 2010
24 Kerswill Place	Pakuranga	Auckland 2010
2/19 Williams Avenue	Pakuranga	Auckland 2010
24 Tamaki Bay Drive	Pakuranga	Auckland 2010
2/24 Riverlea Avenue	Pakuranga	Auckland 2010
25 Browns Avenue	Pakuranga	Auckland 2010
26 Browns Avenue	Pakuranga	Auckland 2010
25 Kerswill Place	Pakuranga	Auckland 2010
30 Mountain Road	Mount Wellington	Auckland 1072
2/20 Riverlea Avenue	Pakuranga	Auckland 2010
3 Williams Avenue	Pakuranga	Auckland 2010
2/20 Tamaki Bay Drive	Pakuranga	Auckland 2010
25 Mountain Road	Mount Wellington	Auckland 1072
25A Mountain Road	Mount Wellington	Auckland 1072
2/22 Church Crescent	Panmure	Auckland 1072
25 Riverlea Avenue	Pakuranga	Auckland 2010
25 Tamaki Bay Drive	Pakuranga	Auckland 2010
2/23 Browns Avenue	Pakuranga	Auckland 2010
25A Lagoon Drive	Panmure	Auckland 1072
25A Tamaki Bay Drive	Pakuranga	Auckland 2010
25B Pakuranga Road	Pakuranga	Auckland 2010
2/24 Riverlea Avenue	Pakuranga	Auckland 2010
13 Bridge Street	Panmure	Auckland 1072
2/25 Lagoon Drive	Panmure	Auckland 1072
26 Kerswill Place	Pakuranga	Auckland 2010
2/25 Latham Avenue	Pakuranga	Auckland 2010
26 Latham Avenue	Pakuranga	Auckland 2010

26 Mountain Road	Mount Wellington	Auckland 1072
2/27 Browns Avenue	Pakuranga	Auckland 2010
82/68 Mountain Road	Mount Wellington	Auckland 1072
26 Riverlea Avenue	Pakuranga	Auckland 2010
26 Tamaki Bay Drive	Pakuranga	Auckland 2010
1/68 Mountain Road	Mount Wellington	Auckland 1072
2/27 Pakuranga Road	Pakuranga	Auckland 2010
47 Queens Road	Panmure	Auckland 1072
2/29 Browns Avenue	Pakuranga	Auckland 2010
26A Mountain Road	Mount Wellington	Auckland 1072
2/2B Dowling Place	Pakuranga	Auckland 2010
3/36 Latham Avenue	Pakuranga	Auckland 2010
2/3 Dowling Place	Pakuranga	Auckland 2010
27 Mountain Road	Mount Wellington	Auckland 1072
2/30 Latham Avenue	Pakuranga	Auckland 2010
2/23 Browns Avenue	Pakuranga	Auckland 2010
2/31 Pakuranga Road	Pakuranga	Auckland 2010
1/27 Browns Avenue	Pakuranga	Auckland 2010
2/31 Tamaki Bay Drive	Pakuranga	Auckland 2010
27A Mountain Road	Mount Wellington	Auckland 1072
27A Tamaki Bay Drive	Pakuranga	Auckland 2010
2/33 Pakuranga Road	Pakuranga	Auckland 2010
27B Mountain Road	Mount Wellington	Auckland 1072
2/34 Latham Avenue	Pakuranga	Auckland 2010
28 Browns Avenue	Pakuranga	Auckland 2010
2/36 Church Crescent	Panmure	Auckland 1072
28 Latham Avenue	Pakuranga	Auckland 2010
3/29 Browns Avenue	Pakuranga	Auckland 2010
2/38 Latham Avenue	Pakuranga	Auckland 2010
28 Mountain Road	Mount Wellington	Auckland 1072
2 Dayspring Way	Pakuranga	Auckland 2010
28 Riverlea Avenue	Pakuranga	Auckland 2010
17A Domain Road	Panmure	Auckland 1072
2/4 Latham Avenue	Pakuranga	Auckland 2010
1/34 Latham Avenue	Pakuranga	Auckland 2010
8 Kerswill Place	Pakuranga	Auckland 2010
2/40 Latham Avenue	Pakuranga	Auckland 2010
28B Riverlea Avenue	Pakuranga	Auckland 2010
2/42 Church Crescent	Panmure	Auckland 1072
38-40 Queens Road	Panmure	Auckland 1072
3 Latham Avenue	Pakuranga	Auckland 2010
4 Tamaki Bay Drive	Pakuranga	Auckland 2010
5 Monaco Place	Mount Wellington	Auckland 1072
29 Kerswill Place	Pakuranga	Auckland 2010
20 Queens Road	Panmure	Auckland 1072
29 Mountain Road	Mount Wellington	Auckland 1072
29/68 Mountain Road	Mount Wellington	Auckland 1072
1-5 Jellicoe Road	Mount Wellington	Auckland 1072
3/9 Mountain Road	Mount Wellington	Auckland 1072

4/9 Mountain Road	Mount Wellington	Auckland 1072
6/9 Mountain Road	Mount Wellington	Auckland 1072
3 Browns Avenue	Pakuranga	Auckland 2010
5/27 Pakuranga Road	Pakuranga	Auckland 2010
3 Dayspring Way	Pakuranga	Auckland 2010
1/3 Dowling Place	Pakuranga	Auckland 2010
2/53 Pakuranga Road	Pakuranga	Auckland 2010
2/22 Church Crescent	Panmure	Auckland 1072
3 Kerswill Place	Pakuranga	Auckland 2010
2/9 Millen Avenue	Pakuranga	Auckland 2010
1/27 Pakuranga Road	Pakuranga	Auckland 2010
2/6 Browns Avenue	Pakuranga	Auckland 2010
3 Monaco Place	Mount Wellington	Auckland 1072
2/6 Dillimore Avenue	Pakuranga	Auckland 2010
3 Mountain Road	Mount Wellington	Auckland 1072
2/6 Mountain Road	Mount Wellington	Auckland 1072
3 Pakuranga Road	Pakuranga	Auckland 2010
3 Riverlea Avenue	Pakuranga	Auckland 2010
97/68 Mountain Road	Mount Wellington	Auckland 1072
2/68 Mountain Road	Mount Wellington	Auckland 1072
2/7 Millen Avenue	Pakuranga	Auckland 2010
11 Domain Road	Panmure	Auckland 1072
9 Domain Road	Panmure	Auckland 1072
2/7 Pakuranga Road	Pakuranga	Auckland 2010
3/11 Browns Avenue	Pakuranga	Auckland 2010
2/75 Pakuranga Road	Pakuranga	Auckland 2010
3/11 Latham Avenue	Pakuranga	Auckland 2010
3/12 Ireland Road	Panmure	Auckland 1060
3/13 Latham Avenue	Pakuranga	Auckland 2010
2/8 Williams Avenue	Pakuranga	Auckland 2010
3/15 Latham Avenue	Pakuranga	Auckland 2010
3/18 Domain Road	Panmure	Auckland 1072
3/19 Lagoon Drive	PANMURE	Auckland 1072
2/9 Latham Avenue	Pakuranga	Auckland 2010
2/9 Millen Avenue	Pakuranga	Auckland 2010
3/19 Latham Avenue	Pakuranga	Auckland 2010
3/2 Dillimore Avenue	Pakuranga	Auckland 2010
2/9 Mountain Road	Mount Wellington	Auckland 1072
2/95 Pakuranga Road	Pakuranga	Auckland 2010
3/21 Latham Avenue	Pakuranga	Auckland 2010
3/22 Church Crescent	Panmure	Auckland 1072
3/25 Lagoon Drive	Panmure	Auckland 1072
3/27 Lagoon Drive	Panmure	Auckland 1072
3/27 Pakuranga Road	Pakuranga	Auckland 2010
20 Kerswill Place	Pakuranga	Auckland 2010
27C Tamaki Bay Drive	Pakuranga	Auckland 2010
20 Latham Avenue	Pakuranga	Auckland 2010
3/36 Church Crescent	Panmure	Auckland 1072
20 Mountain Road	Mount Wellington	Auckland 1072
3/38 Latham Avenue	Pakuranga	Auckland 2010

20 Queens Road	Panmure	Auckland 1072
3/44 Riverlea Avenue	Pakuranga	Auckland 2010
20/10 Basin View Lane	Panmure	Auckland 1072
3P Mountain Road	Mount Wellington	Auckland 1072
20/68 Mountain Road	Mount Wellington	Auckland 1072
3/46 Latham Avenue	Pakuranga	Auckland 2010
3/48 Latham Avenue	Pakuranga	Auckland 2010
20A Mountain Road	Mount Wellington	Auckland 1072
3/55A Pakuranga Road	Pakuranga	Auckland 2010
3/60 Jellicoe Road	Mount Wellington	Auckland 1072
20B Riverlea Avenue	Pakuranga	Auckland 2010
19 Pakuranga Road	Pakuranga	Auckland 2010
21 Bridge Street	Panmure	Auckland 1072
3/81A Pakuranga Road	Pakuranga	Auckland 2010
21 Browns Avenue	Pakuranga	Auckland 2010
30 Browns Avenue	Pakuranga	Auckland 2010
30 Church Crescent	Panmure	Auckland 1072
21 Domain Road	Panmure	Auckland 1072
21 Kerswill Place	Pakuranga	Auckland 2010
30 Jellicoe Road	Mount Wellington	Auckland 1072
30 Tamaki Bay Drive	Pakuranga	Auckland 2010
30A Mountain Road	Mount Wellington	Auckland 1072
21 Mountain Road	Mount Wellington	Auckland 1072
51 Church Crescent	Panmure	Auckland 1072
21 Pakuranga Road	Pakuranga	Auckland 2010
21 Riverlea Avenue	Pakuranga	Auckland 2010
2/16 Kerswill Place	Pakuranga	Auckland 2010
31 Kerswill Place	Pakuranga	Auckland 2010
21 Williams Avenue	Pakuranga	Auckland 2010
2/19 Lagoon Drive	PANMURE	Auckland 1072
21/10 Basin View Lane	Panmure	Auckland 1072
45 Mountain Road	Mount Wellington	Auckland 1072
21/68 Mountain Road	Mount Wellington	Auckland 1072
31 Mountain Road	Mount Wellington	Auckland 1072
21-39 Jellicoe Road	Mount Wellington	Auckland 1072
31 Riverlea Avenue	Pakuranga	Auckland 2010
21A Kerswill Place	Pakuranga	Auckland 2010
12 Dowling Place	Pakuranga	Auckland 2010
21B Kerswill Place	Pakuranga	Auckland 2010
1/31 Pakuranga Road	Pakuranga	Auckland 2010
21C Kerswill Place	Pakuranga	Auckland 2010
32 Riverlea Avenue	Pakuranga	Auckland 2010
21R Williams Avenue	Pakuranga	Auckland 2010
96/68 Mountain Road	Mount Wellington	Auckland 1072
22 Browns Avenue	Pakuranga	Auckland 2010
522 Ellerslie-Panmure Highway	Mount Wellington	Auckland 1060
81/68 Mountain Road	Mount Wellington	Auckland 1072
95 Queens Road	Panmure	Auckland 1072
22 Latham Avenue	Pakuranga	Auckland 2010
33 Riverlea Avenue	Pakuranga	Auckland 2010

50 Queens Road	Panmure	Auckland 1072
1/2 Browns Avenue	Pakuranga	Auckland 2010
33A Mountain Road	Mount Wellington	Auckland 1072
22/10 Basin View Lane	Panmure	Auckland 1072
2/33 Pakuranga Road	Pakuranga	Auckland 2010
22/68 Mountain Road	Mount Wellington	Auckland 1072
34 Browns Avenue	Pakuranga	Auckland 2010
34 Church Crescent	Panmure	Auckland 1072
4 Basin View Lane	Panmure	Auckland 1072
22W Riverlea Avenue	Pakuranga	Auckland 2010
34 Riverlea Avenue	Pakuranga	Auckland 2010
23 Domain Road	Panmure	Auckland 1072
65/68 Mountain Road	Mount Wellington	Auckland 1072
4/27 Pakuranga Road	Pakuranga	Auckland 2010
34/68 Mountain Road	Mount Wellington	Auckland 1072
22 Browns Avenue	Pakuranga	Auckland 2010
35 Mountain Road	Mount Wellington	Auckland 1072
6-10 Queens Road	Panmure	Auckland 1072
35 Riverlea Avenue	Pakuranga	Auckland 2010
23/68 Mountain Road	Mount Wellington	Auckland 1072
11 Riverlea Avenue	Pakuranga	Auckland 2010
36 Browns Avenue	Pakuranga	Auckland 2010
36 Riverlea Avenue	Pakuranga	Auckland 2010
24 Domain Road	Panmure	Auckland 1072
49/68 Mountain Road	Mount Wellington	Auckland 1072
53/68 Mountain Road	Mount Wellington	Auckland 1072
24 Latham Avenue	Pakuranga	Auckland 2010
37 Mountain Road	Mount Wellington	Auckland 1072
24 Queens Road	Panmure	Auckland 1072
37/68 Mountain Road	Mount Wellington	Auckland 1072
2-4 Queens Road	Panmure	Auckland 1072
97-107 Queens Road	Panmure	Auckland 1072
38 Riverlea Avenue	Pakuranga	Auckland 2010
24/68 Mountain Road	Mount Wellington	Auckland 1072
35/68 Mountain Road	Mount Wellington	Auckland 1072
39 Riverlea Avenue	Pakuranga	Auckland 2010
24A Mountain Road	Mount Wellington	Auckland 1072
2/3 Dowling Place	Pakuranga	Auckland 2010
3K Mountain Road	Mount Wellington	Auckland 1072
3L Mountain Road	Mount Wellington	Auckland 1072
13 Pakuranga Road	Pakuranga	Auckland 2010
25 Pakuranga Road	Pakuranga	Auckland 2010
25 Queens Road	Panmure	Auckland 1072
4 Dayspring Way	Pakuranga	Auckland 2010
4 Dowling Place	Pakuranga	Auckland 2010
38/68 Mountain Road	Mount Wellington	Auckland 1072
25/68 Mountain Road	Mount Wellington	Auckland 1072
4 Millen Avenue	Pakuranga	Auckland 2010
4 Mountain Road	Mount Wellington	Auckland 1072
60/68 Mountain Road	Mount Wellington	Auckland 1072

25A Mountain Road	Mount Wellington	Auckland 1072
4 Riverlea Avenue	Pakuranga	Auckland 2010
25A Pakuranga Road	Pakuranga	Auckland 2010
4 Sunset View Road	Panmure	Auckland 1072
56 Queens Road	Panmure	Auckland 1072
4/12 Ireland Road	Panmure	Auckland 1060
26 Browns Avenue	Pakuranga	Auckland 2010
26 Domain Road	Panmure	Auckland 1072
8/9 Mountain Road	Mount Wellington	Auckland 1072
4/22 Church Crescent	Panmure	Auckland 1072
4/25 Lagoon Drive	Panmure	Auckland 1072
27 Tamaki Bay Drive	Pakuranga	Auckland 2010
3/7A Mountain Road	Mount Wellington	Auckland 1072
4/40 Latham Avenue	Pakuranga	Auckland 2010
26/68 Mountain Road	Mount Wellington	Auckland 1072
4/53 Pakuranga Road	Pakuranga	Auckland 2010
26-28 Queens Road	Panmure	Auckland 1072
4/54 Jellicoe Road	Mount Wellington	Auckland 1072
4/55A Pakuranga Road	Pakuranga	Auckland 2010
4/60 Jellicoe Road	Mount Wellington	Auckland 1072
26B Mountain Road	Mount Wellington	Auckland 1072
4/7A Mountain Road	Mount Wellington	Auckland 1072
40 Church Crescent	Panmure	Auckland 1072
27 Queens Road	Panmure	Auckland 1072
2/75 Pakuranga Road	Pakuranga	Auckland 2010
40 Riverlea Avenue	Pakuranga	Auckland 2010
42/68 Mountain Road	Mount Wellington	Auckland 1072
27/68 Mountain Road	Mount Wellington	Auckland 1072
40A Church Crescent	Panmure	Auckland 1072
40A Jellicoe Road	Mount Wellington	Auckland 1072
40B Jellicoe Road	Mount Wellington	Auckland 1072
40C Jellicoe Road	Mount Wellington	Auckland 1072
40D Jellicoe Road	Mount Wellington	Auckland 1072
27B Tamaki Bay Drive	Pakuranga	Auckland 2010
40E Jellicoe Road	Mount Wellington	Auckland 1072
27C Tamaki Bay Drive	Pakuranga	Auckland 2010
41 Church Crescent	Panmure	Auckland 1072
2/13 Latham Avenue	Pakuranga	Auckland 2010
21/68 Mountain Road	Mount Wellington	Auckland 1072
41 Pakuranga Road	Pakuranga	Auckland 2010
2-8 Pilkington Road	Mount Wellington	Auckland 1072
2/11 Tamaki Bay Drive	Pakuranga	Auckland 2010
41/68 Mountain Road	Mount Wellington	Auckland 1072
28/68 Mountain Road	Mount Wellington	Auckland 1072
1/17 Kerswill Place	Pakuranga	Auckland 2010
28A Mountain Road	Mount Wellington	Auckland 1072
13C Pakuranga Road	Pakuranga	Auckland 2010
42 Riverlea Avenue	Pakuranga	Auckland 2010
F/22-28 Jellicoe Road	Mount Wellington	Auckland 1072
42A Jellicoe Road	Mount Wellington	Auckland 1072

42C Jellicoe Road	Mount Wellington	Auckland 1072
42D Jellicoe Road	Mount Wellington	Auckland 1072
29 Pakuranga Road	Pakuranga	Auckland 2010
29 Queens Road	Panmure	Auckland 1072
42E Jellicoe Road	Mount Wellington	Auckland 1072
29 Riverlea Avenue	Pakuranga	Auckland 2010
121 Queens Road	Panmure	Auckland 1072
29 Tamaki Bay Drive	Pakuranga	Auckland 2010
12-14 Queens Road	Panmure	Auckland 1072
C/22-28 Jellicoe Road	Mount Wellington	Auckland 1072
43 Mountain Road	Mount Wellington	Auckland 1072
29A Pakuranga Road	Pakuranga	Auckland 2010
43 Riverlea Avenue	Pakuranga	Auckland 2010
2A Dowling Place	Pakuranga	Auckland 2010
20/68 Mountain Road	Mount Wellington	Auckland 1072
45 Queens Road	Panmure	Auckland 1072
2A Williams Avenue	Pakuranga	Auckland 2010
2/25 Lagoon Drive	Panmure	Auckland 1072
46 Riverlea Avenue	Pakuranga	Auckland 2010
3 Forge Way	Mount Wellington	Auckland 1072
64/68 Mountain Road	Mount Wellington	Auckland 1072
15/9 Mountain Road	Mount Wellington	Auckland 1072
47 Church Crescent	Panmure	Auckland 1072
3 Latham Avenue	Pakuranga	Auckland 2010
47 Mountain Road	Mount Wellington	Auckland 1072
3 Millen Avenue	Pakuranga	Auckland 2010
47 Pakuranga Road	Pakuranga	Auckland 2010
47 Riverlea Avenue	Pakuranga	Auckland 2010
47A Mountain Road	Mount Wellington	Auckland 1072
1/12 Millen Avenue	Pakuranga	Auckland 2010
3 Sunset View Road	Panmure	Auckland 1072
48 Riverlea Avenue	Pakuranga	Auckland 2010
3 Tamaki Bay Drive	Pakuranga	Auckland 2010
75/68 Mountain Road	Mount Wellington	Auckland 1072
29 Queens Road	Panmure	Auckland 1072
3 Williams Avenue	Pakuranga	Auckland 2010
17B Domain Road	Panmure	Auckland 1072
3/1 Latham Avenue	Pakuranga	Auckland 2010
3/10 Basin View Lane	Panmure	Auckland 1072
49 Pakuranga Road	Pakuranga	Auckland 2010
49A Pakuranga Road	Pakuranga	Auckland 2010
49 Riverlea Avenue	Pakuranga	Auckland 2010
3/11 Pakuranga Road	Pakuranga	Auckland 2010
28/68 Mountain Road	Mount Wellington	Auckland 1072
1/4 Browns Avenue	Pakuranga	Auckland 2010
27/68 Mountain Road	Mount Wellington	Auckland 1072
58/68 Mountain Road	Mount Wellington	Auckland 1072
3/16 Bridge Street	Panmure	Auckland 1072
4A Millen Avenue	Pakuranga	Auckland 2010
3/16 Latham Avenue	Pakuranga	Auckland 2010

4A Mountain Road	Mount Wellington	Auckland 1072
3/17 Latham Avenue	Pakuranga	Auckland 2010
1/23 Latham Avenue	Pakuranga	Auckland 2010
5 Browns Avenue	Pakuranga	Auckland 2010
2/5 Kerswill Place	Pakuranga	Auckland 2010
33 Queens Road	Panmure	Auckland 1072
5 Mountain Road	Mount Wellington	Auckland 1072
5 Pakuranga Road	Pakuranga	Auckland 2010
5 Riverlea Avenue	Pakuranga	Auckland 2010
3/23 Browns Avenue	Pakuranga	Auckland 2010
5 Sunset View Road	Panmure	Auckland 1072
3 Sunset View Road	Panmure	Auckland 1072
5/12 Ireland Road	Panmure	Auckland 1060
5/40 Latham Avenue	Pakuranga	Auckland 2010
3/27A Pakuranga Road	Pakuranga	Auckland 2010
5/60 Jellicoe Road	Mount Wellington	Auckland 1072
5/68 Mountain Road	Mount Wellington	Auckland 1072
3/29 Browns Avenue	Pakuranga	Auckland 2010
50 Jellicoe Road	MOUNT WELLINGTON	Auckland 1072
3/34 Latham Avenue	Pakuranga	Auckland 2010
50A Jellicoe Road	MOUNT WELLINGTON	Auckland 1072
50 Riverlea Avenue	Pakuranga	Auckland 2010
3/36 Latham Avenue	Pakuranga	Auckland 2010
3/27A Pakuranga Road	Pakuranga	Auckland 2010
3/40 Latham Avenue	Pakuranga	Auckland 2010
3A Mountain Road	Mount Wellington	Auckland 1072
51 Mountain Road	Mount Wellington	Auckland 1072
3/43 Pakuranga Road	Pakuranga	Auckland 2010
26B Mountain Road	Mount Wellington	Auckland 1072
52 Lagoon Drive	Panmure	Auckland 1072
3/16 Latham Avenue	Pakuranga	Auckland 2010
3/52 Jellicoe Road	Mount Wellington	Auckland 1072
52 Queens Road	Panmure	Auckland 1072
52 Riverlea Avenue	Pakuranga	Auckland 2010
3/53 Pakuranga Road	Pakuranga	Auckland 2010
3/54 Jellicoe Road	Mount Wellington	Auckland 1072
524 Ellerslie-Panmure Highway	Mount Wellington	Auckland 1060
6 Williams Avenue	Pakuranga	Auckland 2010
3/6 Mountain Road	Mount Wellington	Auckland 1072
1/52 Latham Avenue	Pakuranga	Auckland 2010
53 Church Crescent	Panmure	Auckland 1072
3/68 Mountain Road	Mount Wellington	Auckland 1072
9 Basin View Lane	Panmure	Auckland 1072
3/7 Pakuranga Road	Pakuranga	Auckland 2010
53 Mountain Road	Mount Wellington	Auckland 1072
3/7A Mountain Road	Mount Wellington	Auckland 1072
53 Riverlea Avenue	Pakuranga	Auckland 2010
1/15 Dowling Place	Pakuranga	Auckland 2010
54 Lagoon Drive	Panmure	Auckland 1072
3/9 Mountain Road	Mount Wellington	Auckland 1072

54 Riverlea Avenue	Pakuranga	Auckland 2010
2/38 Latham Avenue	Pakuranga	Auckland 2010
55 Church Crescent	Panmure	Auckland 1072
30 Mountain Road	Mount Wellington	Auckland 1072
56/68 Mountain Road	Mount Wellington	Auckland 1072
30 Pleasant View Road	Mount Wellington	Auckland 1072
55B Mountain Road	Mount Wellington	Auckland 1072
56 Lagoon Drive	Panmure	Auckland 1072
30 Queens Road	Panmure	Auckland 1072
44/68 Mountain Road	Mount Wellington	Auckland 1072
30 Riverlea Avenue	Pakuranga	Auckland 2010
56A Jellicoe Road	Mount Wellington	Auckland 1072
30/68 Mountain Road	Mount Wellington	Auckland 1072
2/1 Latham Avenue	Pakuranga	Auckland 2010
57 Mountain Road	Mount Wellington	Auckland 1072
30R Tamaki Bay Drive	Pakuranga	Auckland 2010
2-4 Queens Road	Panmure	Auckland 1072
57/68 Mountain Road	Mount Wellington	Auckland 1072
3D Mountain Road	Mount Wellington	Auckland 1072
31 Queens Road	Panmure	Auckland 1072
58 Jellicoe Road	Mount Wellington	Auckland 1072
1/5 Dowling Place	Pakuranga	Auckland 2010
31/68 Mountain Road	Mount Wellington	Auckland 1072
5A Mountain Road	Mount Wellington	Auckland 1072
5A Williams Avenue	Pakuranga	Auckland 2010
32 Church Crescent	Panmure	Auckland 1072
5B Mountain Road	Mount Wellington	Auckland 1072
32 Pleasant View Road	Mount Wellington	Auckland 1072
5C Mountain Road	Mount Wellington	Auckland 1072
6 Dayspring Way	Pakuranga	Auckland 2010
32/68 Mountain Road	Mount Wellington	Auckland 1072
6 Dowling Place	Pakuranga	Auckland 2010
32-34 Queens Road	Panmure	Auckland 1072
69 Queens Road	Panmure	Auckland 1072
33 Queens Road	Panmure	Auckland 1072
6 Latham Avenue	Pakuranga	Auckland 2010
29 Tamaki Bay Drive	Pakuranga	Auckland 2010
6 Millen Avenue	Pakuranga	Auckland 2010
33/68 Mountain Road	Mount Wellington	Auckland 1072
6 Riverlea Avenue	Pakuranga	Auckland 2010
33B Mountain Road	Mount Wellington	Auckland 1072
1/27 Kerswill Place	Pakuranga	Auckland 2010
21 Browns Avenue	Pakuranga	Auckland 2010
6/60 Jellicoe Road	Mount Wellington	Auckland 1072
34 Pleasant View Road	Mount Wellington	Auckland 1072
1/15 Latham Avenue	Pakuranga	Auckland 2010
60 Queens Road	Panmure	Auckland 1072
61/68 Mountain Road	Mount Wellington	Auckland 1072
3-5 Basin View Lane	Panmure	Auckland 1072
61A Pakuranga Road	Pakuranga	Auckland 2010

63/68 Mountain Road	Mount Wellington	Auckland 1072
B/63 Pakuranga Road	Pakuranga	Auckland 2010
35 Queens Road	Panmure	Auckland 1072
30 Mountain Road	Mount Wellington	Auckland 1072
41 Mountain Road	Mount Wellington	Auckland 1072
35/68 Mountain Road	Mount Wellington	Auckland 1072
67/68 Mountain Road	Mount Wellington	Auckland 1072
35R Riverlea Avenue	Pakuranga	Auckland 2010
1/6 Browns Avenue	Pakuranga	Auckland 2010
2/6 Browns Avenue	Pakuranga	Auckland 2010
36 Pleasant View Road	Mount Wellington	Auckland 1072
6A Millen Avenue	Pakuranga	Auckland 2010
6A Riverlea Avenue	Pakuranga	Auckland 2010
36/68 Mountain Road	Mount Wellington	Auckland 1072
7 Browns Avenue	Pakuranga	Auckland 2010
7 Domain Road	Panmure	Auckland 1072
66/68 Mountain Road	Mount Wellington	Auckland 1072
37 Pakuranga Road	Pakuranga	Auckland 2010
37 Queens Road	Panmure	Auckland 1072
7 Kerswill Place	Pakuranga	Auckland 2010
37 Riverlea Avenue	Pakuranga	Auckland 2010
7 Latham Avenue	Pakuranga	Auckland 2010
7 Monaco Place	Mount Wellington	Auckland 1072
7/68 Mountain Road	Mount Wellington	Auckland 1072
38 Church Crescent	Panmure	Auckland 1072
38 Pleasant View Road	Mount Wellington	Auckland 1072
7/9 Mountain Road	Mount Wellington	Auckland 1072
71 Pakuranga Road	Pakuranga	Auckland 2010
38/68 Mountain Road	Mount Wellington	Auckland 1072
40/68 Mountain Road	Mount Wellington	Auckland 1072
73/68 Mountain Road	Mount Wellington	Auckland 1072
38-40 Queens Road	Panmure	Auckland 1072
39 Mountain Road	Mount Wellington	Auckland 1072
76/68 Mountain Road	Mount Wellington	Auckland 1072
26/68 Mountain Road	Mount Wellington	Auckland 1072
78/68 Mountain Road	Mount Wellington	Auckland 1072
39/68 Mountain Road	Mount Wellington	Auckland 1072
79 Pakuranga Road	Pakuranga	Auckland 2010
3A Mountain Road	Mount Wellington	Auckland 1072
79/68 Mountain Road	Mount Wellington	Auckland 1072
3B Mountain Road	Mount Wellington	Auckland 1072
7A Kerswill Place	Pakuranga	Auckland 2010
1/7 Millen Avenue	Pakuranga	Auckland 2010
3C Mountain Road	Mount Wellington	Auckland 1072
3D Mountain Road	Mount Wellington	Auckland 1072
1/7 Pakuranga Road	Pakuranga	Auckland 2010
18/9 Mountain Road	Mount Wellington	Auckland 1072
3E Mountain Road	Mount Wellington	Auckland 1072
1/20 Riverlea Avenue	Pakuranga	Auckland 2010
3F Mountain Road	Mount Wellington	Auckland 1072

2/7 Millen Avenue	Pakuranga	Auckland 2010
3G Mountain Road	Mount Wellington	Auckland 1072
3H Mountain Road	Mount Wellington	Auckland 1072
2/7 Pakuranga Road	Pakuranga	Auckland 2010
2/29 Browns Avenue	Pakuranga	Auckland 2010
3I Mountain Road	Mount Wellington	Auckland 1072
61 Pakuranga Road	Pakuranga	Auckland 2010
3J Mountain Road	Mount Wellington	Auckland 1072
8 Browns Avenue	Pakuranga	Auckland 2010
8 Dayspring Way	Pakuranga	Auckland 2010
3M Mountain Road	Mount Wellington	Auckland 1072
8 Dowling Place	Pakuranga	Auckland 2010
15 Kerswill Place	Pakuranga	Auckland 2010
87/68 Mountain Road	Mount Wellington	Auckland 1072
3O Mountain Road	Mount Wellington	Auckland 1072
2/8 Latham Avenue	Pakuranga	Auckland 2010
3P Mountain Road	Mount Wellington	Auckland 1072
8 Millen Avenue	Pakuranga	Auckland 2010
3Q Mountain Road	Mount Wellington	Auckland 1072
3R Mountain Road	Mount Wellington	Auckland 1072
8 Monaco Place	Mount Wellington	Auckland 1072
8 Mountain Road	Mount Wellington	Auckland 1072
4 Basin View Lane	Panmure	Auckland 1072
8 Riverlea Avenue	Pakuranga	Auckland 2010
68/68 Mountain Road	Mount Wellington	Auckland 1072
4 Ireland Road	Panmure	Auckland 1060
8 Sunset View Road	Panmure	Auckland 1072
1/8 Tamaki Bay Drive	Pakuranga	Auckland 2010
3/23 Browns Avenue	Pakuranga	Auckland 2010
4 Pakuranga Road	Pakuranga	Auckland 2010
14B Bridge Street	Panmure	Auckland 1072
80/68 Mountain Road	Mount Wellington	Auckland 1072
20 Mountain Road	Mount Wellington	Auckland 1072
20A Mountain Road	Mount Wellington	Auckland 1072
4 Tamaki Bay Drive	Pakuranga	Auckland 2010
4/10 Basin View Lane	Panmure	Auckland 1072
3/54 Jellicoe Road	Mount Wellington	Auckland 1072
81 Pakuranga Road	Pakuranga	Auckland 2010
4/16 Bridge Street	Panmure	Auckland 1072
77/68 Mountain Road	Mount Wellington	Auckland 1072
1/7A Mountain Road	Mount Wellington	Auckland 1072
83 Pakuranga Road	Pakuranga	Auckland 2010
83/68 Mountain Road	Mount Wellington	Auckland 1072
4/27 Pakuranga Road	Pakuranga	Auckland 2010
2/20 Tamaki Bay Drive	Pakuranga	Auckland 2010
85 Pakuranga Road	Pakuranga	Auckland 2010
4/52 Jellicoe Road	Mount Wellington	Auckland 1072
1/31 Tamaki Bay Drive	Pakuranga	Auckland 2010
92/68 Mountain Road	Mount Wellington	Auckland 1072
11/68 Mountain Road	Mount Wellington	Auckland 1072

4/6 Mountain Road	Mount Wellington	Auckland 1072
89 Pakuranga Road	Pakuranga	Auckland 2010
17E Domain Road	Panmure	Auckland 1072
4/68 Mountain Road	Mount Wellington	Auckland 1072
2/2B Dowling Place	Pakuranga	Auckland 2010
8A Tamaki Bay Drive	Pakuranga	Auckland 2010
1/8 Williams Avenue	Pakuranga	Auckland 2010
4/9 Mountain Road	Mount Wellington	Auckland 1072
63 Queens Road	Panmure	Auckland 1072
40 Pleasant View Road	Mount Wellington	Auckland 1072
14A Bridge Street	Panmure	Auckland 1072
71/68 Mountain Road	Mount Wellington	Auckland 1072
40/68 Mountain Road	Mount Wellington	Auckland 1072
9 Browns Avenue	PAKURANGA	Auckland 2010
24/68 Mountain Road	Mount Wellington	Auckland 1072
9 Kerswill Place	Pakuranga	Auckland 2010
9 Monaco Place	Mount Wellington	Auckland 1072
35 Queens Road	Panmure	Auckland 1072
9 Williams Avenue	Pakuranga	Auckland 2010
9/9 Mountain Road	Mount Wellington	Auckland 1072
91 Pakuranga Road	Pakuranga	Auckland 2010
41 Mountain Road	Mount Wellington	Auckland 1072
72/68 Mountain Road	Mount Wellington	Auckland 1072
91/68 Mountain Road	Mount Wellington	Auckland 1072
41 Riverlea Avenue	Pakuranga	Auckland 2010
42B Jellicoe Road	Mount Wellington	Auckland 1072
2/30 Latham Avenue	Pakuranga	Auckland 2010
42 Pleasant View Road	Mount Wellington	Auckland 1072
93 Queens Road	Panmure	Auckland 1072
42 Queens Road	Panmure	Auckland 1072
93/68 Mountain Road	Mount Wellington	Auckland 1072
95 Pakuranga Road	Pakuranga	Auckland 2010
1/54 Jellicoe Road	Mount Wellington	Auckland 1072
42/68 Mountain Road	Mount Wellington	Auckland 1072
9A Browns Avenue	PAKURANGA	Auckland 2010
42B Jellicoe Road	Mount Wellington	Auckland 1072
18 Latham Avenue	Pakuranga	Auckland 2010
9A Pakuranga Road	Pakuranga	Auckland 2010
1/4 Latham Avenue	Pakuranga	Auckland 2010
30 Pleasant View Road	Mount Wellington	Auckland 1072
43 Church Crescent	PANMURE	Auckland 1072
32 Pleasant View Road	Mount Wellington	Auckland 1072
34 Pleasant View Road	Mount Wellington	Auckland 1072
36 Pleasant View Road	Mount Wellington	Auckland 1072
43 Queens Road	Panmure	Auckland 1072
38 Pleasant View Road	Mount Wellington	Auckland 1072
40 Pleasant View Road	Mount Wellington	Auckland 1072
43/68 Mountain Road	Mount Wellington	Auckland 1072
44 Church Crescent	Panmure	Auckland 1072
42 Pleasant View Road	Mount Wellington	Auckland 1072

44 Pleasant View Road	Mount Wellington	Auckland 1072
44 Pleasant View Road	Mount Wellington	Auckland 1072
46 Pleasant View Road	Mount Wellington	Auckland 1072
44 Queens Road	Panmure	Auckland 1072
44/68 Mountain Road	Mount Wellington	Auckland 1072
48 Pleasant View Road	Mount Wellington	Auckland 1072
45 Church Crescent	PANMURE	Auckland 1072
50 Pleasant View Road	Mount Wellington	Auckland 1072
52 Pleasant View Road	Mount Wellington	Auckland 1072
45 Mountain Road	Mount Wellington	Auckland 1072
54 Pleasant View Road	Mount Wellington	Auckland 1072
45 Pakuranga Road	Pakuranga	Auckland 2010
56 Pleasant View Road	Mount Wellington	Auckland 1072
58 Pleasant View Road	Mount Wellington	Auckland 1072
60 Pleasant View Road	Mount Wellington	Auckland 1072
45/68 Mountain Road	Mount Wellington	Auckland 1072
46 Pakuranga Road	Pakuranga	Auckland 2010
62 Pleasant View Road	Mount Wellington	Auckland 1072
46 Pleasant View Road	Mount Wellington	Auckland 1072
64 Pleasant View Road	Mount Wellington	Auckland 1072
66 Pleasant View Road	Mount Wellington	Auckland 1072
46 Queens Road	Panmure	Auckland 1072
68 Pleasant View Road	Mount Wellington	Auckland 1072
46/68 Mountain Road	Mount Wellington	Auckland 1072
70 Pleasant View Road	Mount Wellington	Auckland 1072
46A Pakuranga Road	Pakuranga	Auckland 2010
72 Pleasant View Road	Mount Wellington	Auckland 1072
74 Pleasant View Road	Mount Wellington	Auckland 1072
76 Pleasant View Road	Mount Wellington	Auckland 1072
78 Pleasant View Road	Mount Wellington	Auckland 1072
80 Pleasant View Road	Mount Wellington	Auckland 1072
47 Queens Road	Panmure	Auckland 1072
82 Pleasant View Road	Mount Wellington	Auckland 1072
47/68 Mountain Road	Mount Wellington	Auckland 1072
84 Pleasant View Road	Mount Wellington	Auckland 1072
86 Pleasant View Road	Mount Wellington	Auckland 1072
48 Lagoon Drive	Panmure	Auckland 1072
88 Pleasant View Road	Mount Wellington	Auckland 1072
48 Pleasant View Road	Mount Wellington	Auckland 1072
90 Pleasant View Road	Mount Wellington	Auckland 1072
48 Queens Road	Panmure	Auckland 1072
92 Pleasant View Road	Mount Wellington	Auckland 1072
94 Pleasant View Road	Mount Wellington	Auckland 1072
70-88 Queens Road	Panmure	Auckland 1072
48/68 Mountain Road	Mount Wellington	Auckland 1072
3N Mountain Road	Mount Wellington	Auckland 1072
49 Queens Road	Panmure	Auckland 1072
1/5 Kerswill Place	Pakuranga	Auckland 2010
49/68 Mountain Road	Mount Wellington	Auckland 1072
49A Pakuranga Road	Pakuranga	Auckland 2010

5 Millen Avenue	Pakuranga	Auckland 2010
5 Monaco Place	Mount Wellington	Auckland 1072
46 Pakuranga Road	Pakuranga	Auckland 2010
5 Tamaki Bay Drive	Pakuranga	Auckland 2010
5 Williams Avenue	Pakuranga	Auckland 2010
13 Browns Avenue	Pakuranga	Auckland 2010
5/10 Basin View Lane	Panmure	Auckland 1072
88/68 Mountain Road	Mount Wellington	Auckland 1072
48 Queens Road	Panmure	Auckland 1072
5/16 Bridge Street	Panmure	Auckland 1072
17F Domain Road	Panmure	Auckland 1072
2/11 Browns Avenue	Pakuranga	Auckland 2010
5/27 Pakuranga Road	Pakuranga	Auckland 2010
57 Pakuranga Road	Pakuranga	Auckland 2010
3/52 Jellicoe Road	Mount Wellington	Auckland 1072
1 Tamaki Bay Drive	Pakuranga	Auckland 2010
3 Tamaki Bay Drive	Pakuranga	Auckland 2010
5/9 Mountain Road	Mount Wellington	Auckland 1072
9 Dowling Place	Pakuranga	Auckland 2010
1/32 Latham Avenue	Pakuranga	Auckland 2010
1/6 Dillimore Avenue	Pakuranga	Auckland 2010
50 Latham Avenue	Pakuranga	Auckland 2010
1/6 Mountain Road	Mount Wellington	Auckland 1072
2/6 Mountain Road	Mount Wellington	Auckland 1072
50 Queens Road	Panmure	Auckland 1072
3/6 Mountain Road	Mount Wellington	Auckland 1072
4/6 Mountain Road	Mount Wellington	Auckland 1072
50/68 Mountain Road	Mount Wellington	Auckland 1072
21 Riverlea Avenue	Pakuranga	Auckland 2010
50A Jellicoe Road	MOUNT WELLINGTON	Auckland 1072
7A Sunset View Road	Panmure	Auckland 1072
50B Riverlea Avenue	Pakuranga	Auckland 2010
46A Pakuranga Road	Pakuranga	Auckland 2010
51 Church Crescent	Panmure	Auckland 1072
29 Riverlea Avenue	Pakuranga	Auckland 2010
20 Latham Avenue	Pakuranga	Auckland 2010
51 Pakuranga Road	Pakuranga	Auckland 2010
51/68 Mountain Road	Mount Wellington	Auckland 1072
24 Latham Avenue	Pakuranga	Auckland 2010
514 Ellerslie-Panmure Highwa	Mount Wellington	Auckland 1060
41 Riverlea Avenue	Pakuranga	Auckland 2010
51-57 Queens Road	Panmure	Auckland 1072
45 Riverlea Avenue	Pakuranga	Auckland 2010
516A Ellerslie-Panmure Highw	Mount Wellington	Auckland 1060
9 Riverlea Avenue	Pakuranga	Auckland 2010
518 Ellerslie-Panmure Highwa	Mount Wellington	Auckland 1060
2/34 Latham Avenue	Pakuranga	Auckland 2010
12 Riverlea Avenue	Pakuranga	Auckland 2010
51A Pakuranga Road	Pakuranga	Auckland 2010
2/8 Williams Avenue	Pakuranga	Auckland 2010

52 Pleasant View Road	Mount Wellington	Auckland 1072
9 Dayspring Way	Pakuranga	Auckland 2010
17D Pakuranga Road	Pakuranga	Auckland 2010
22 Latham Avenue	Pakuranga	Auckland 2010
9/68 Mountain Road	Mount Wellington	Auckland 1072
52/68 Mountain Road	Mount Wellington	Auckland 1072
21 Williams Avenue	Pakuranga	Auckland 2010
522 Ellerslie-Panmure Highway	Mount Wellington	Auckland 1060
6/68 Mountain Road	Mount Wellington	Auckland 1072
50 Lagoon Drive	Panmure	Auckland 1072
52A Lagoon Drive	Panmure	Auckland 1072
52B Lagoon Drive	Panmure	Auckland 1072
1 Riverlea Avenue	Pakuranga	Auckland 2010
120 Queens Road	Panmure	Auckland 1072
7 Tamaki Bay Drive	Pakuranga	Auckland 2010
71-79 Queens Road	Panmure	Auckland 1072
81-87 Queens Road	Panmure	Auckland 1072
53/68 Mountain Road	Mount Wellington	Auckland 1072
2/14 Dowling Place	Pakuranga	Auckland 2010
54 Pleasant View Road	Mount Wellington	Auckland 1072
39 Pakuranga Road	Pakuranga	Auckland 2010
54 Queens Road	Panmure	Auckland 1072
1/4 Monaco Place	Mount Wellington	Auckland 1072
62/68 Mountain Road	Mount Wellington	Auckland 1072
54/68 Mountain Road	Mount Wellington	Auckland 1072
A/22-28 Jellicoe Road	Mount Wellington	Auckland 1072
8A Mountain Road	Mount Wellington	Auckland 1072
8B Mountain Road	Mount Wellington	Auckland 1072
55/68 Mountain Road	Mount Wellington	Auckland 1072
5 Latham Avenue	Pakuranga	Auckland 2010
26 Domain Road	Panmure	Auckland 1072
24 Domain Road	Panmure	Auckland 1072
56 Jellicoe Road	Mount Wellington	Auckland 1072
65 Pakuranga Road	Pakuranga	Auckland 2010
56 Pleasant View Road	Mount Wellington	Auckland 1072
2/19 Williams Avenue	Pakuranga	Auckland 2010
2/14 Latham Avenue	Pakuranga	Auckland 2010
56 Queens Road	Panmure	Auckland 1072
37 Riverlea Avenue	Pakuranga	Auckland 2010
56/68 Mountain Road	Mount Wellington	Auckland 1072
49 Queens Road	Panmure	Auckland 1072
51-57 Queens Road	Panmure	Auckland 1072
57 Pakuranga Road	Pakuranga	Auckland 2010
2/7 Mountain Road	Mount Wellington	Auckland 1072
109-113 Queens Road	Panmure	Auckland 1072
20A Riverlea Avenue	Pakuranga	Auckland 2010
58 Pleasant View Road	Mount Wellington	Auckland 1072
2 Tamaki Bay Drive	Pakuranga	Auckland 2010
26A Browns Avenue	Pakuranga	Auckland 2010
58 Queens Road	Panmure	Auckland 1072

1/20 Dowling Place	Pakuranga	Auckland 2010
58/68 Mountain Road	Mount Wellington	Auckland 1072
28A Riverlea Avenue	Pakuranga	Auckland 2010
58A Jellicoe Road	Mount Wellington	Auckland 1072
59 Queens Road	Panmure	Auckland 1072
17H Domain Road	Panmure	Auckland 1072
59/68 Mountain Road	Mount Wellington	Auckland 1072
2/47 Pakuranga Road	Pakuranga	Auckland 2010
2/40 Latham Avenue	Pakuranga	Auckland 2010
518 Ellerslie-Panmure Highway	Mount Wellington	Auckland 1060
36/68 Mountain Road	Mount Wellington	Auckland 1072
17F Pakuranga Road	Pakuranga	Auckland 2010
52B Lagoon Drive	Panmure	Auckland 1072
6 Basin View Lane	Panmure	Auckland 1072
35 Kerswill Place	Pakuranga	Auckland 2010
3M Mountain Road	Mount Wellington	Auckland 1072
2/10 Mountain Road	Mount Wellington	Auckland 1072
6 Kerswill Place	Pakuranga	Auckland 2010
2A Millen Avenue	Pakuranga	Auckland 2010
54/68 Mountain Road	Mount Wellington	Auckland 1072
32 Browns Avenue	Pakuranga	Auckland 2010
6 Pakuranga Road	Pakuranga	Auckland 2010
2/10 Dayspring Way	Pakuranga	Auckland 2010
B/22-28 Jellicoe Road	Mount Wellington	Auckland 1072
6 Williams Avenue	Pakuranga	Auckland 2010
6/10 Basin View Lane	Panmure	Auckland 1072
E/22-28 Jellicoe Road	Mount Wellington	Auckland 1072
G/22-28 Jellicoe Road	Mount Wellington	Auckland 1072
6/27 Pakuranga Road	Pakuranga	Auckland 2010
6/40 Latham Avenue	Pakuranga	Auckland 2010
1/19 Latham Avenue	Pakuranga	Auckland 2010
2/19 Latham Avenue	Pakuranga	Auckland 2010
6/68 Mountain Road	Mount Wellington	Auckland 1072
47/68 Mountain Road	Mount Wellington	Auckland 1072
9 Pakuranga Road	Pakuranga	Auckland 2010
6/9 Mountain Road	Mount Wellington	Auckland 1072
60 Pleasant View Road	Mount Wellington	Auckland 1072
8/68 Mountain Road	Mount Wellington	Auckland 1072
7 Williams Avenue	Pakuranga	Auckland 2010
20 Ireland Road	Panmure	Auckland 1060
60/68 Mountain Road	Mount Wellington	Auckland 1072
61 Pakuranga Road	Pakuranga	Auckland 2010
61 Queens Road	Panmure	Auckland 1072
6-10 Queens Road	Panmure	Auckland 1072
62 Pleasant View Road	Mount Wellington	Auckland 1072
12 Latham Avenue	Pakuranga	Auckland 2010
24 Queens Road	Panmure	Auckland 1072
62 Queens Road	Panmure	Auckland 1072
7B Sunset View Road	Panmure	Auckland 1072
63 Queens Road	Panmure	Auckland 1072

70/68 Mountain Road	Mount Wellington	Auckland 1072
98/68 Mountain Road	Mount Wellington	Auckland 1072
64 Pleasant View Road	Mount Wellington	Auckland 1072
25/68 Mountain Road	Mount Wellington	Auckland 1072
32-34 Queens Road	Panmure	Auckland 1072
64/68 Mountain Road	Mount Wellington	Auckland 1072
3 Forge Way	Mount Wellington	Auckland 1072
64A Pakuranga Road	Pakuranga	Auckland 2010
65 Pakuranga Road	Pakuranga	Auckland 2010
46/68 Mountain Road	Mount Wellington	Auckland 1072
99/68 Mountain Road	Mount Wellington	Auckland 1072
65/68 Mountain Road	Mount Wellington	Auckland 1072
66 Pleasant View Road	Mount Wellington	Auckland 1072
93 Pakuranga Road	Pakuranga	Auckland 2010
66/68 Mountain Road	Mount Wellington	Auckland 1072
89-91 Queens Road	Panmure	Auckland 1072
67/68 Mountain Road	Mount Wellington	Auckland 1072
17L Domain Road	Panmure	Auckland 1072
68 Pleasant View Road	Mount Wellington	Auckland 1072
5 Williams Avenue	Pakuranga	Auckland 2010
68/68 Mountain Road	Mount Wellington	Auckland 1072
26-28 Queens Road	Panmure	Auckland 1072
11 Forge Way	Mount Wellington	Auckland 1072
69 Queens Road	Panmure	Auckland 1072
16 Queens Road	Panmure	Auckland 1072
69/68 Mountain Road	Mount Wellington	Auckland 1072
16A-18 Queens Road	Panmure	Auckland 1072
6A Pakuranga Road	Pakuranga	Auckland 2010
3/17 Latham Avenue	Pakuranga	Auckland 2010
3/7 Pakuranga Road	Pakuranga	Auckland 2010
7 Dayspring Way	Pakuranga	Auckland 2010
19 Domain Road	Panmure	Auckland 1072
19A Domain Road	Panmure	Auckland 1072
7 Dowling Place	Pakuranga	Auckland 2010
8A Basin View Lane	Panmure	Auckland 1072
7 Forge Way	Mount Wellington	Auckland 1072
27B Tamaki Bay Drive	Pakuranga	Auckland 2010
7 Forge Way	Mount Wellington	Auckland 1072
30/68 Mountain Road	Mount Wellington	Auckland 1072
3-5 Basin View Lane	Panmure	Auckland 1072
7 Mountwell Crescent	MOUNT WELLINGTON	Auckland 1072
16/68 Mountain Road	Mount Wellington	Auckland 1072
6 Basin View Lane	Panmure	Auckland 1072
54 Queens Road	Panmure	Auckland 1072
7 Williams Avenue	Pakuranga	Auckland 2010
D/22-28 Jellicoe Road	Mount Wellington	Auckland 1072
7/10 Basin View Lane	Panmure	Auckland 1072
2/31 Pakuranga Road	Pakuranga	Auckland 2010
1/55 Pakuranga Road	Pakuranga	Auckland 2010
7/27 Pakuranga Road	Pakuranga	Auckland 2010

15 Dayspring Way	Pakuranga	Auckland 2010
39/68 Mountain Road	Mount Wellington	Auckland 1072
70 Pleasant View Road	Mount Wellington	Auckland 1072
42 Queens Road	Panmure	Auckland 1072
70/68 Mountain Road	Mount Wellington	Auckland 1072
21-39 Jellicoe Road	Mount Wellington	Auckland 1072
70-88 Queens Road	Panmure	Auckland 1072
43 Church Crescent	PANMURE	Auckland 1072
45 Church Crescent	PANMURE	Auckland 1072
71/68 Mountain Road	Mount Wellington	Auckland 1072
3/11 Pakuranga Road	Pakuranga	Auckland 2010
71-79 Queens Road	Panmure	Auckland 1072
12 Kerswill Place	Pakuranga	Auckland 2010
72 Pleasant View Road	Mount Wellington	Auckland 1072
2/31 Tamaki Bay Drive	Pakuranga	Auckland 2010
72/68 Mountain Road	Mount Wellington	Auckland 1072
12 Dayspring Way	Pakuranga	Auckland 2010
1/13A Pakuranga Road	Pakuranga	Auckland 2010
73 Pakuranga Road	Pakuranga	Auckland 2010
Railway Network	Auckland Region	Auckland 9999
74 Pleasant View Road	Mount Wellington	Auckland 1072
59 Queens Road	Panmure	Auckland 1072
14/68 Mountain Road	Mount Wellington	Auckland 1072
74/68 Mountain Road	Mount Wellington	Auckland 1072
15/68 Mountain Road	Mount Wellington	Auckland 1072
75/68 Mountain Road	Mount Wellington	Auckland 1072
76 Pleasant View Road	Mount Wellington	Auckland 1072
31/68 Mountain Road	Mount Wellington	Auckland 1072
32/68 Mountain Road	Mount Wellington	Auckland 1072
77 Pakuranga Road	Pakuranga	Auckland 2010
51/68 Mountain Road	Mount Wellington	Auckland 1072
77/68 Mountain Road	Mount Wellington	Auckland 1072
55/68 Mountain Road	Mount Wellington	Auckland 1072
78 Pleasant View Road	Mount Wellington	Auckland 1072
59/68 Mountain Road	Mount Wellington	Auckland 1072
94/68 Mountain Road	Mount Wellington	Auckland 1072
95/68 Mountain Road	Mount Wellington	Auckland 1072
80 Mountain Road	Mount Wellington	Auckland 1072
22/68 Mountain Road	Mount Wellington	Auckland 1072
7A Sunset View Road	Panmure	Auckland 1072
87 Pakuranga Road	Pakuranga	Auckland 2010
7B Sunset View Road	Panmure	Auckland 1072
28A Mountain Road	Mount Wellington	Auckland 1072
105 Pakuranga Road	Pakuranga	Auckland 2010
8 Basin View Lane	Panmure	Auckland 1072
5 Millen Avenue	Pakuranga	Auckland 2010
4/68 Mountain Road	Mount Wellington	Auckland 1072
3/40 Latham Avenue	Pakuranga	Auckland 2010
C/26 Pakuranga Road	Pakuranga	Auckland 2010
8 Kerswill Place	Pakuranga	Auckland 2010

11 Dowling Place	Pakuranga	Auckland 2010
17D Domain Road	Panmure	Auckland 1072
14 Church Crescent	Panmure	Auckland 1072
8 Mountwell Crescent	Mount Wellington	Auckland 1072
1 Cleary Road	Panmure	Auckland 1060
8 Pakuranga Road	Pakuranga	Auckland 2010
1A Cleary Road	Panmure	Auckland 1060
7 Dayspring Way	Pakuranga	Auckland 2010
17 Browns Avenue	Pakuranga	Auckland 2010
8/10 Basin View Lane	Panmure	Auckland 1072
17K Domain Road	Panmure	Auckland 1072
4 Ireland Road	Panmure	Auckland 1060
8/27 Pakuranga Road	Pakuranga	Auckland 2010
8/68 Mountain Road	Mount Wellington	Auckland 1072
20B Riverlea Avenue	Pakuranga	Auckland 2010
8/9 Mountain Road	Mount Wellington	Auckland 1072
80 Mountain Road	Mount Wellington	Auckland 1072
80 Pleasant View Road	Mount Wellington	Auckland 1072
81/68 Mountain Road	Mount Wellington	Auckland 1072
81-87 Queens Road	Panmure	Auckland 1072
81B Pakuranga Road	Pakuranga	Auckland 2010
82 Pleasant View Road	Mount Wellington	Auckland 1072
82/68 Mountain Road	Mount Wellington	Auckland 1072
84 Pleasant View Road	Mount Wellington	Auckland 1072
84/68 Mountain Road	Mount Wellington	Auckland 1072
85/68 Mountain Road	Mount Wellington	Auckland 1072
86 Pleasant View Road	Mount Wellington	Auckland 1072
86/68 Mountain Road	Mount Wellington	Auckland 1072
87 Pakuranga Road	Pakuranga	Auckland 2010
87/68 Mountain Road	Mount Wellington	Auckland 1072
88 Pleasant View Road	Mount Wellington	Auckland 1072
88/68 Mountain Road	Mount Wellington	Auckland 1072
89/68 Mountain Road	Mount Wellington	Auckland 1072
89-91 Queens Road	Panmure	Auckland 1072
8A Basin View Lane	Panmure	Auckland 1072
8A Mountain Road	Mount Wellington	Auckland 1072
8B Mountain Road	Mount Wellington	Auckland 1072
9 Basin View Lane	Panmure	Auckland 1072
9 Domain Road	Panmure	Auckland 1072
9 Tamaki Bay Drive	Pakuranga	Auckland 2010
9/10 Basin View Lane	Panmure	Auckland 1072
9/68 Mountain Road	Mount Wellington	Auckland 1072
2/25 Latham Avenue	Pakuranga	Auckland 2010
90 Pleasant View Road	Mount Wellington	Auckland 1072
1/10 Riverlea Avenue	Pakuranga	Auckland 2010
514 Ellerslie-Panmure Highway	Mount Wellington	Auckland 1060
90/68 Mountain Road	Mount Wellington	Auckland 1072
516A Ellerslie-Panmure Highway	Mount Wellington	Auckland 1060
2-8 Pilkington Road	Mount Wellington	Auckland 1072
92 Pleasant View Road	Mount Wellington	Auckland 1072

81B Pakuranga Road	Pakuranga	Auckland 2010
1/44 Latham Avenue	Pakuranga	Auckland 2010
92/68 Mountain Road	Mount Wellington	Auckland 1072
93 Pakuranga Road	Pakuranga	Auckland 2010
8 Mountwell Crescent	Mount Wellington	Auckland 1072
3B Mountain Road	Mount Wellington	Auckland 1072
3H Mountain Road	Mount Wellington	Auckland 1072
94 Pleasant View Road	Mount Wellington	Auckland 1072
2/27 Browns Avenue	Pakuranga	Auckland 2010
94/68 Mountain Road	Mount Wellington	Auckland 1072
27 Riverlea Avenue	Pakuranga	Auckland 2010
12 Browns Avenue	Pakuranga	Auckland 2010
1/33 Pakuranga Road	Pakuranga	Auckland 2010
95 Queens Road	Panmure	Auckland 1072
95/68 Mountain Road	Mount Wellington	Auckland 1072
21 Kerswill Place	Pakuranga	Auckland 2010
21A Kerswill Place	Pakuranga	Auckland 2010
96/68 Mountain Road	Mount Wellington	Auckland 1072
97 Pakuranga Road	Pakuranga	Auckland 2010
21B Kerswill Place	Pakuranga	Auckland 2010
21C Kerswill Place	Pakuranga	Auckland 2010
97/68 Mountain Road	Mount Wellington	Auckland 1072
97 Pakuranga Road	Pakuranga	Auckland 2010
97-107 Queens Road	Panmure	Auckland 1072
98/68 Mountain Road	Mount Wellington	Auckland 1072
99 Pakuranga Road	Pakuranga	Auckland 2010
99 Pakuranga Road	Pakuranga	Auckland 2010
10 Kerswill Place	Pakuranga	Auckland 2010
99/68 Mountain Road	Mount Wellington	Auckland 1072
7 Dowling Place	Pakuranga	Auckland 2010
39 Mountain Road	Mount Wellington	Auckland 1072
2/22 Riverlea Avenue	Pakuranga	Auckland 2010
3/68 Mountain Road	Mount Wellington	Auckland 1072
A/11 Latham Avenue	Pakuranga	Auckland 2010
A/22-28 Jellicoe Road	Mount Wellington	Auckland 1072
77 Pakuranga Road	Pakuranga	Auckland 2010
2/53 Pakuranga Road	Pakuranga	Auckland 2010
A/63 Pakuranga Road	Pakuranga	Auckland 2010
B/22-28 Jellicoe Road	Mount Wellington	Auckland 1072
6/40 Latham Avenue	Pakuranga	Auckland 2010
2/18 Domain Road	Panmure	Auckland 1072
B/55 Pakuranga Road	Pakuranga	Auckland 2010
5A Dayspring Way	Pakuranga	Auckland 2010
B/63 Pakuranga Road	Pakuranga	Auckland 2010
2/101 Pakuranga Road	Pakuranga	Auckland 2010
C/22-28 Jellicoe Road	Mount Wellington	Auckland 1072
C/26 Pakuranga Road	Pakuranga	Auckland 2010
18 Riverlea Avenue	Pakuranga	Auckland 2010
31 Queens Road	Panmure	Auckland 1072
C/44 Latham Avenue	Pakuranga	Auckland 2010

D/22-28 Jellicoe Road	Mount Wellington	Auckland 1072
1/24 Riverlea Avenue	Pakuranga	Auckland 2010
E/22-28 Jellicoe Road	Mount Wellington	Auckland 1072
7 Riverlea Avenue	Pakuranga	Auckland 2010
37 Queens Road	Panmure	Auckland 1072
F/22-28 Jellicoe Road	Mount Wellington	Auckland 1072
G/22-28 Jellicoe Road	Mount Wellington	Auckland 1072
33B Mountain Road	Mount Wellington	Auckland 1072
3R Mountain Road	Mount Wellington	Auckland 1072

8 Appendix B - A list of key stakeholders

Id	Next action	Key contact	Relationship owner	Level of engagement	WHEN to engage / Frequency	Engagement Techniques (i.e. HOW we will engage them)
Key political / decision makers						
Auckland Mayor's office		Rory Palmer	Matt Poland	Inform		Key Stakeholder Forum Key Stakeholder communiques
Maungakiekie Tamaki Councillor Josephine Bartley		Melanie Dale	Matt Poland	Inform, consult		Written updates and briefings through elected member liaisons
Howick Local Board councillors - Sharon Stewart		Ben Stallworthy	Matt Poland	Inform, consult		Key Stakeholder Forums Presentation updates Written briefings
Maungakiekie -Tamaki Local Board		Melanie Dale	Matt Poland	Inform, consult		Workshops. Regular written updates through Elected Member Liaisons and direct where possible
Howick Local Board		Ben Stallworthy	Matt Poland	Inform, consult		Workshops. Regular written updates through Elected Member Liaisons. Formal consultation on reserve changes.
Tangata Whenua						
AMETI mana whenua hui (self identified iwi): -Ngati Tamaoho, Te Akitai Waiohua, Ngati Whatua o Orakei, Ngati Paoa, Ngati Te Ata, Ngati Maru,		Tipa Compain / Maea Rawiri	Aimee Simons and Nicola Bishop / Duncan Humphrey	Inform, involve		Collective meeting/hui with relevant iwi groups. Individual iwi meetings. Personalised letters and emails (to iwi representatives for wider distribution to their contacts).
Ngati Whātua o Ōrākei		Tipa Compain / Maea Rawiri	Aimee Simons and Nicola Bishop / Duncan	Inform, involve		Hui Written briefings

Ngāti Whātua o Ōrangā		Tipa Compain / Maea Rawiri	Aimee Simons and Nicola Bishop / Duncan	Inform, involve		Hui Written briefings
Ngāti Paoa		Tipa Compain / Maea Rawiri	Aimee Simons and Nicola Bishop / Duncan Humphrey	Inform, involve		Hui Written briefings
Ngāti Maru		Tipa Compain / Maea Rawiri	Aimee Simons and Nicola Bishop / Duncan Humphrey	Inform, involve		Hui Written briefings
Ngāti Whanaunga		Tipa Compain / Maea Rawiri	Aimee Simons and Nicola Bishop / Duncan Humphrey	Inform, involve		Hui Written briefings
Ngāti Tamaoho		Tipa Compain / Maea Rawiri	Aimee Simons and Nicola Bishop / Duncan Humphrey	Inform, involve		Hui Written briefings
Ngāti Tamaoho		Tipa Compain / Maea Rawiri	Aimee Simons and Nicola Bishop / Duncan Humphrey	Inform, involve		Hui Written briefings
Ngāti Te Ata Waiohua		Tipa Compain / Maea Rawiri	Aimee Simons and Nicola Bishop / Duncan Humphrey	Inform, involve		Hui Written briefings
Ngāi Tai ki Tāmaki		Tipa Compain / Maea Rawiri	Aimee Simons and Nicola Bishop / Duncan Humphrey	Inform, involve		Hui Written briefings
Te Akitai Waiohua		Tipa Compain / Maea Rawiri	Aimee Simons and Nicola Bishop / Duncan Humphrey	Inform, involve		Hui Written briefings
Ngati Tamaterā		Tipa Compain / Maea Rawiri	Aimee Simons and Nicola Bishop / Duncan Humphrey	Inform, involve		Hui Written briefings
Te Kawerau a Waki		Tipa Compain / Maea Rawiri	Aimee Simons and Nicola Bishop / Duncan Humphrey	Inform, involve		Hui Written briefings
Key landowners						
Mobil Panmure			Prakash	Inform, consult		Meetings Written updates
Warehouse Pakuranga Plaza		Matt Poland	Jon Bennetts	Inform, consult		Meetings Written updates
Countdown Pakuranga Plaza		Matt Poland	Jon Bennetts	Inform, consult		Meetings Written updates
Farmers Pakuranga Plaza		Matt Poland	Jon Bennetts	Inform, consult		Meetings Written updates

Additional GYP tenants		Matt Poland	Jon Bennetts	Inform, consult		Meetings Written updates
GYP		Duncan Humphrey	Marcus Williams	Inform, consult		Meetings Written updates
Mobil Pakuranga		Ian Campbell	Jon Bennetts	Inform, consult		Meetings Written updates
Z Energy Pakuranga		Ian Campbell	Jon Bennetts	Inform, consult		Meetings Written updates
Gull Service Station Pakuranga		Ian Campbell	Jon Bennetts	Inform, consult		Meetings Written updates
BP Service Station Pakuranga		Ian Campbell	Jon Bennetts	Inform, consult		Meetings Written updates
Bunnings Warehouse Botany (Argosy Property)		Ian Campbell / Mark van der Ham	Jon Bennetts	Inform, consult		Meetings Written updates
Pet Stop Ti Rakau Drive		Ian Campbell	Jon Bennetts	Inform, consult		Meetings Written updates
Ti Tuhi Arts Centre		Matt Poland	Matt Poland	Inform, involve		Meetings Written updates
26 Ti Rakau Drive		Ian Campbell	Marcus Williams	Inform, consult		Meetings Written updates
DG Law Ltd			Prakash	Inform, consult		Meetings Written updates
United Industries		Ian Campbell	Jon Bennetts	Inform, consult		Meetings
Howick & Eastern Buses		Ian Campbell	Jon Bennetts			
Target		Ian Campbell	Jon Bennetts			
272 Ti Rakau Drive (Old Pub group of shops)		Ian Campbell	Jon Bennetts			
295 Ti Rakau Drive (Restaurants)		Ian Campbell	Jon Bennetts			
The Hub /Sir Barry Curtis		Ian Campbell	Jon Bennetts			
Edgewater Shops - 107-109 Ti Rakau Drive		Mark van der Ham	Jon Bennetts			
316-318 Ti Rakau Drive (Medical Centre)		Ian Campbell	Jon Bennetts			
249 Ti Rakau Drive		Ian Campbell	Jon Bennetts			
62 Ti Rakau Drive (Accessed from Cortina Place)		Ian Campbell	Jon Bennetts			
Purfume Chalet 5 Reeves Road		Ian Campbell	Jon Bennetts			
Wesley College Trust Board (Ross Taylor)		Ian Campbell	Jon Bennetts			
St Kentigerns College		Matt Poland	Matt Poland			
Proxmiity affected properties and businesses						
Panmure, Pakuranga and Botany (refer to proximity maps)				Inform/consult		Mail drop Information sessions 1:1 meetings as required
Auckland Council family						
AT Metro		Debajeet	Duncan Humphrey	Consult		Meetings
Community Transport team		Matt Poland	Matt Poland	Consult		Meetings
AC Public Arts		TBC	Marcus Williams	Consult		Meetings
Traffic Safety team		Jon Bennetts / EB1 TBC	Jon Bennetts / Stephen Burris	Consult		Meetings
Road Corridor Maintenance team		Jon Bennetts / EB1 TBC	Jon Bennetts / Stephen Burris	Consult		Meetings

Auckland Council Healthy Water		Jon Bennetts / EB1 TBC	Paul Driver / Stephen Burris	Consult		Meetings
Street Lighting		Jon Bennetts / EB1 TBC	Jon Bennetts / Stephen Burris	Consult		Meetings
AT Parking		Jon Bennetts / EB1 TBC	Jon Bennetts / Stephen Burris	Consult		Meetings
AC Community Facilities & Services		Jon Bennetts / EB1 TBC	Jon Bennetts / Stephen Burris	Consult		Meetings
Auckland Transport Operations Centre		Jon Bennetts / EB1 TBC	Jon Bennetts / Stephen Burris	Consult		Meetings
Cycling and Walking Planning		Jon Bennetts / EB1 TBC	Jon Bennetts / Stephen Burris	Consult		Meetings
AT Asset Management Team		Jon Bennetts / EB1 TBC	Jon Bennetts / Stephen Burris	Consult		Meetings
AT Design Office		Jon Bennetts / EB1 TBC	Jon Bennetts / Stephen Burris	Consult		Meetings
AT Traffic Engineering		Jon Bennetts / EB1 TBC	Jon Bennetts / Stephen Burris	Consult		Meetings
AT ITS systems		Jon Bennetts / EB1 TBC	Jon Bennetts / Stephen Burris	Consult		Meetings
AT Travel Demand Management		Jon Bennetts / EB1 TBC	Jon Bennetts / Stephen Burris	Consult		Meetings
Auckland Forecasting Centre		Jon Bennetts / EB1 TBC	Jon Bennetts / Stephen Burris	Consult		Meetings
AT Strategic Initiatives		Jon Bennetts / EB1 TBC	Jon Bennetts / Stephen Burris	Consult		Meetings
AT Finance – asset capitalisation and funding investment		Jon Bennetts / EB1 TBC	Jon Bennetts / Stephen Burris	Consult		Meetings
Southern Planning - Town Centre Masterplan		Jon Bennetts / EB1 TBC	Caisey Marter / Aimee Simons	Inform, consult		Meetings. Formal consultation on integrating transport and land use / town centre placemaking
Auckland Council Urban Design		Jon Bennetts / EB1 TBC	Caisey Marter	Inform, consult		Meetings.
Development Project Office		Jon Bennetts / EB1 TBC	Michelle Prattley			
Panuku Development Auckland		Matt Poland	Caisey Marter / Stephen Burris			
Panuku Property Management		Matt Poland	Thomas Goehring			
Council's Parks		Jon Bennetts / EB1 TBC	Jon Bennetts / Stephen Burris	Consult		Meetings
Network Utility Providers						
Transpower		Paul Driver	Paul Driver / Phil Archer	Inform, consult		Meetings Written updates
Vector		Paul Driver / Phil Archer	Paul Driver / Phil Archer	Inform, consult		Meetings Written updates
Chorus		Paul Driver / Phil Archer	Paul Driver / Phil Archer	Inform, consult		Meetings Written updates
Watercare		Paul Driver / Phil Archer	Paul Driver / Phil Archer	Inform, consult		Meetings Written updates

Vodafone		Paul Driver / Phil Archer	Paul Driver / Phil Archer			
Spark		Paul Driver / Phil Archer	Paul Driver / Phil Archer			
Transport organisations / advocacy groups						
Walk Auckland	LB to contact	Matt Poland	Matt Poland	Inform, consult		Liaison group forum Events Written updates
Heavy Haulage	LB to contact	Matt Poland	Matt Poland	Inform, consult		Liaison group forum Events Written updates
AA		Matt Poland	Matt Poland	Inform		Liaison group forum Events Written updates
National Road Carriers	LB to contact	Matt Poland	Matt Poland	Inform, consult		Liaison group forum Events Written updates
Greater Auckland		Matt Poland	Matt Poland	Inform		Liaison group forum Events Written updates
Bike Auckland (Barbara Cuthbert)	LB to contact	Matt Poland	Marcus Williams / Stephen Burris	Inform / Consult		Liaison group forum Events Written updates
The Greenways Project (a Not-for-Profit initiative)	LB to contact	Matt Poland	Matt Poland	Inform, consult		Liaison group forum Events Written updates
Generation Zero		Matt Poland	Matt Poland			
Emergency Services						
NZ Fire Service	LB to contact and set up emergency servcies liaison group	Matt Poland	Jon Bennetts / Stephen Burris	Inform, consult		Liaison group forum Written updates
NZ Police	LB to contact and set up emergency servcies liaison group	Matt Poland	Jon Bennetts / Stephen Burris	Inform, consult		Liaison group forum Written updates
Ambulances / St John	LB to contact and set up emergency servcies liaison group	Matt Poland	Jon Bennetts / Stephen Burris	Inform		Liaison group forum Written updates
Business Associations / Groups:						
Panmure Business Association	MP to contact	Matt Poland	Matt Poland	Inform, consult		Liaison group forum Written updates
Howick Business Association	LB to contact	Matt Poland	Matt Poland	Inform		Liaison group forum Written updates
GETBA	LB to contact	Matt Poland	Matt Poland	Inform, consult		Liaison group forum Written updates

Chinese Business Association		Matt Poland	Matt Poland	Inform, consult		Liaison group forum Written updates
Chamber of Commerce	LB to contact	Matt Poland	Matt Poland	Inform		Liaison group forum Written updates
Employers and Manufacturers Association (EMA)	LB to contact	Matt Poland	Matt Poland	Inform		Liaison group forum Written updates
Community Groups / Facilities						
Panmure Community Action Group			Matt Poland	Inform, consult		Liaison group forum Written updates
Tamaki Reformed Baptist Church	LB to contact tpo sound out opportunities					
Panmure Methodist Church	LB to contact tpo sound out opportunities					
Methodist Church Panmure	LB to contact tpo sound out opportunities					
The Joy Korean Presbyterian Church in Auckland	LB to contact tpo sound out opportunities					
River of Life Christian Church (Pastors Peter & Annika)	LB to contact tpo sound out opportunities					
Bread of Life Christian Church Zhou Bin -priest, Xiangzhi- Administrative	LB to contact tpo sound out opportunities					
Eastgate Christian Centre Allan & Lynette- Senior Pastors	LB to contact tpo sound out opportunities					
The Church of God in Auckland	LB to contact tpo sound out opportunities					
Methodist Church Pakuranga Trinity	LB to contact tpo sound out opportunities					
Pakuranga Baptist Church Andrew Brown Senior Pastor	LB to contact tpo sound out opportunities					
St Peters Anglican Church Vicar - The Reverend Kris Heale	LB to contact tpo sound out opportunities					
Pakuranga Christian Fellowship	LB to contact tpo sound out opportunities					

St Mark's Catholic Church Mary Zaloum – Secretary	LB to contact tpo sound out opportunities					
North New Zealand Conference Seventh Day Adventist Church Hanah Greenfield- EA/ Communications	LB to contact tpo sound out opportunities					
	LB to contact tpo sound out opportunities					
Pilgrim Baptist Church Pastor Sim Mascarina Mike Jaurigue	LB to contact tpo sound out opportunities					
	LB to contact tpo sound out opportunities					
Cession Community Church	LB to contact tpo sound out opportunities	Pastor Brett Jones	Matt Poland			
St Columba Presbyterian Church	LB to contact tpo sound out opportunities	Maureen Pepper	Matt Poland			
Elim Christian Centre East	LB to contact tpo sound out opportunities	Lead Pastors Steve & Becs Green	Matt Poland			
Botanylife Community Church	LB to contact tpo sound out opportunities		Matt Poland			
Eastview Baptist Church	LB to contact tpo sound out opportunities		Matt Poland			
International Baptist Church	LB to contact tpo sound out opportunities	Pastor Ken and Jennifer Young	Matt Poland			
NewHope Community Church East Auckland	LB to contact tpo sound out opportunities	Pastor Ian & Kimberley Buckley / Missions & Evangelism	Matt Poland			
Fo Guang Shan Temple, Auckland	LB to contact tpo sound out opportunities	Hsing Yun	Matt Poland			
East City Wesleyan Church	LB to contact tpo sound out opportunities	Sian Sidwell Bbus Administrative Coordinator	Matt Poland			
Pakuranga Mosque	LB to contact tpo sound out opportunities		Matt Poland			
Church of Christ (Iglesia Ni Cristo) Locale of Manukau	LB to contact tpo sound out opportunities		Matt Poland			

Masjid Abu Bakr Al-Siddiq	LB to contact tpo sound out opportunities		Matt Poland			
Citipointe Church	LB to contact tpo sound out opportunities	Mike & Nadine Mulheran	Matt Poland			
Islamic Ahlulbayt Foundation of New Zealand	LB to contact tpo sound out opportunities		Matt Poland			
Congregational Church of Samoa	LB to contact tpo sound out opportunities		Matt Poland			
The Church of Jesus Christ of Latter-day Saints	LB to contact tpo sound out opportunities		Matt Poland			
Restoration Church Auckland	LB to contact tpo sound out opportunities		Matt Poland			
Faith Family Community Centre	LB to contact tpo sound out opportunities		Matt Poland			
Saint Bartholomews	LB to contact tpo sound out opportunities		Matt Poland			
Howick Presbyterian Church	LB to contact tpo sound out opportunities	Jane Few Administrator	Matt Poland			
Places of Worship (FIND DETAILS OF ALL CHURCHES IN PAKURANGA, BOTANY,	LB to contact tpo sound out	Matt Poland	Matt Poland	Inform, consult		Liaison group forum Written updates
Anchorage Park Community House	LB to contact tpo sound out opportunities	Julie Verrall – House Co- ordinator	Matt Poland			
Edgewater Community Education	LB to contact tpo sound out opportunities		Matt Poland			
Rotary of Botany East Tamaki	LB to contact tpo sound out opportunities	Mike Jaggs- Secretary	Matt Poland			
Tamaki Estuary Environmental Forum Jan Burbery	LB to contact tpo sound out opportunities		Matt Poland	Infrm, consult		Presentation updates Meetings Written updates

The Tamaki Estuary Environmental Forum	LB to contact tpo sound out opportunities	Matt Poland	Matt Poland	Inform, consult		Liaison group forum Written updates
Local Schools						
Edgewater College (Marae)	LB to make contact, offering info session	Allan Vester- Principal	Jon Bennetss / Yvette Nicholls	Inform		Meetings with Principal/Facilities Manager. Newsletter (for students to take home to parents). Follow up letters and/or emails to Principal.
	LB to make contact, offering info session	Anita Taylor- Executive Officer				
Pakuranga College	LB to make contact, offering info session		Jon Bennetts / Yvette Nicholls	Inform		Meetings with Principal/Facilities Manager. Newsletter (for students to take home to parents). Follow up letters and/or emails to Principal.
Panmure Primary School	LB to make contact, offering info session		Yvette Nicholls	Inform		Meetings with Principal/Facilities Manager. Newsletter (for students to take home to parents). Follow up letters and/or emails to Principal.

St Patrick's School (Panmure)	LB to make contact, offering info session	Carmel Bullôt (Principal)	Yvette Nicholls	Inform		Meetings with Principal/Facilities Manager. Newsletter (for students to take home to parents). Follow up letters and/or emails to Principal.
Panmure District School	LB to make contact, offering info session	Rebekah Watts (Principal)	Yvette Nicholls	Inform		Meetings with Principal/Facilities Manager. Newsletter (for students to take home to parents). Follow up letters and/or emails to Principal.
Panmure Bridge School	LB to make contact, offering info session	Richard Johnston (Principal)	Yvette Nicholls	Inform		Meetings with Principal/Facilities Manager. Newsletter (for students to take home to parents). Follow up letters and/or emails to Principal.
Te Tira Hou Te Kohanga Reo	LB to make contact, offering info session		Yvette Nicholls	Inform		Meetings with Principal/Facilities Manager. Newsletter (for students to take home to parents). Follow up letters and/or emails to Principal.
Pakuranga Intermediate School	LB to make contact, offering info session	Stephen Johnston - Principal,	Jon Bennetts / Yvette Nicholls	Inform		Meetings with Principal/Facilities Manager. Newsletter (for students to take home to parents). Follow up letters and/or emails to Principal.

Kid Start Childcare Early Learning Centre/ Barnardos Early Learning Centre Pakuranga	LB to make contact, offering info session	Angela Eckhoff (Manager)	Yvette Nicholls	Inform		Meetings with Principal/Facilities Manager. Newsletter (for students to take home to parents). Follow up letters and/or emails to Principal.
Panmure Bridge Childcare Centre	LB to make contact, offering		Yvette Nicholls			
ABC Panmure	LB to make contact, offering info session		Yvette Nicholls			
Sommerville School	LB to make contact, offering	Diane Hankins Principal	Yvette Nicholls			
Ruapotaka School	LB to make contact, offering	Gael Vickers	Yvette Nicholls			
Young Montessori	LB to make contact, offering	Sumathy Pushpakumar	Yvette Nicholls			
Trinity Kindergarten	LB to make	Bernice Smit	Yvette Nicholls			
Whiteacres Kindergarten/ Farm Cove Kindergarten	LB to make contact, offering info session		Yvette Nicholls			
Pakuranga Kindergarten	LB to make contact, offering		Yvette Nicholls			
Hilltop Kindergarten	LB to make contact, offering		Yvette Nicholls			
Pakuranga Baptist Kindergarten	LB to make contact, offering	Taryn Muller	Yvette Nicholls			
Cascades Kindergarten	LB to make contact, offering info session		Yvette Nicholls			
Anchorage Park Kindergarten	LB to make contact, offering		Yvette Nicholls			
Plunket Playgroup - Anchorage Park	LB to make contact, offering	Annelee Hayward	Yvette Nicholls			
Pakuranga Learning Centre	LB to make contact, offering		Yvette Nicholls			
Tippytoes Child Care	LB to make contact, offering info session	Haley Steele	Yvette Nicholls			
Playcentre - Pakuranga-rahihi	LB to make contact, offering		Yvette Nicholls			
Playcentre - Tamaki SPACE Programme	LB to make contact, offering info session		Yvette Nicholls			
Tinytown Learning Centres - Pakuranga	LB to make contact, offering	Leanne From Pakuranga Tiny Town	Yvette Nicholls			
Acorn Meadows Education & Childcare	LB to make contact, offering info session	Susan (one of the teachers)	Yvette Nicholls			

Riverhills Early Learning Centre	LB to make contact, offering	Cathryn Putman Centre Owner / Manager	Yvette Nicholls			
Sunnyhills Primary School	LB to make contact, offering	Justine Driver (Principal)	Yvette Nicholls			
Pakuranga Heights Primary School	LB to make contact, offering info session	Mr Fintan Kelly Principal,	Jon Bennetts / Yvette Nicholls			
	LB to make contact, offering	Mrs Toni Christensen Office Reception	Jon Bennetts / Yvette Nicholls			
Anchorage Park Primary School	LB to make contact, offering info session	Lynne Keohane (Principal), Annabelle Kingston & Susan Jones	Jon Bennetts / Yvette Nicholls			
Riverhills Primary School	LB to make contact, offering info session	Mrs Sarah Allen Principal,	Jon Bennetts / Yvette Nicholls			
	LB to make contact, offering info session	Mrs Marlene Stephens Office Manager - Mornings, Mrs Sue Lees Office Manager -	Jon Bennetts / Yvette Nicholls			
Elm Park School	LB to make contact, offering info session	Mrs Trish Plowright Principal,	Yvette Nicholls			
	LB to make contact, offering info session	Mrs Donna Deadmarsh Reception, BoT Deputy Chairperson	Yvette Nicholls			
Shelly Park School	LB to make contact, offering	Principal Brian Rolfe	Yvette Nicholls			
Botany Downs Primary School	LB to make contact, offering info session	Principal Mr Bruce Trezise, Executive Officer Mrs Trish	Yvette Nicholls			
Mission Heights Primary School	LB to make contact, offering info session	Mrs. Veena Vohra, Principal, Executive Secretary/PA – Mrs Sue Kennedy Receptionist – Mrs Kyra	Yvette Nicholls			
The Bridge Academy	LB to make contact, offering		Yvette Nicholls			
Tyndale Park Christian School	LB to make contact, offering info session	Principal: Mr Barend Blom	Yvette Nicholls			
Willowbank School	LB to make contact, offering	Deirde Alderson (Principal),	Yvette Nicholls			
Sancta Maria Catholic Primary School	LB to make contact, offering info session	Gina Benade Principal	Yvette Nicholls			
	LB to make contact, offering	Gina James (Office Administrator	Yvette Nicholls			
Mellons Bay School	LB to make contact, offering info session	Colleen Margison (Principal	Yvette Nicholls			
	LB to make	Helen Bould Office	Yvette Nicholls			

Baverstock Oaks School	LB to make contact, offering info session	Mary Wilson Principal	Yvette Nicholls			
	LB to make contact, offering	Frances Fraser Executive Officer/PA	Yvette Nicholls			
Our Lady Star of the Sea School	LB to make contact, offering info session	Carmel Platt Principal	Yvette Nicholls			
	LB to make	Anne-Marie Doyle,	Yvette Nicholls			
Howick Primary School	LB to make contact, offering info session	Mrs Leyette Callister Principal	Yvette Nicholls			
	LB to make contact, offering info session	Mr Wilbyn Palvie-Mitchell and Mrs Marsha Ammonds-Smith Office	Yvette Nicholls			
Owairoa Primary School	LB to make contact, offering info session	Principal: Alan McIntyre: Phone extention 204	Yvette Nicholls			
	LB to make contact, offering	Sue Wolfgram Office Manager: Phone	Yvette Nicholls			
Point View School	LB to make contact, offering info session	Robin Kirkham- Principal, Trish Tanner, Adrienne McIlvrde (Administration)	Yvette Nicholls			
Cockle Bay School	LB to make contact, offering info session	Principal: Dorothy Bigwood	Yvette Nicholls			
	LB to make contact, offering	Mrs Ginny Gartland- Principal PA	Yvette Nicholls			
Chapel Downs Primary School	LB to make contact, offering info session	Mr Vaughan van Rensburg- Principal	Yvette Nicholls			
	LB to make	Mrs Julie Rushbrook -	Yvette Nicholls			
Botany Downs Secondary College	LB to make contact, offering	Principal: Karen Brinsden	Yvette Nicholls			
Sancta Maria College	LB to make	Principal: Louise Moore	Yvette Nicholls			
Howick College	LB to make contact, offering	Principal: Iva Ropati	Yvette Nicholls			
Elim Christian College	LB to make contact, offering	Principal: Murray Burton	Yvette Nicholls			
Ormiston Senior College	LB to make contact, offering	Diana Patience- Principal, Lynnette Greeff	Yvette Nicholls			
Macleans College	LB to make contact, offering	Mr Byron Bentley, Principal	Yvette Nicholls			
	LB to make contact, offering	Mrs Linda Roberts- Principals PA, Phone	Yvette Nicholls			
ABC Botany	LB to make contact, offering		Yvette Nicholls			
Dannemora Kindergarten	LB to make contact, offering		Yvette Nicholls			
Somerville Kindergarten	LB to make contact, offering		Yvette Nicholls			

Howick Kindergarten	LB to make contact, offering		Yvette Nicholls			
Beachcomber Kindergarten	LB to make contact, offering		Yvette Nicholls			
St. Andrews Chilton Kindergarten	LB to make contact, offering		Yvette Nicholls			
Pigeon Mountain Kindergarten	LB to make contact, offering info session		Yvette Nicholls			
Botany Downs Kindergarten	LB to make contact, offering		Yvette Nicholls			
Buckland's Beach Kindergarten	LB to make contact, offering info session		Yvette Nicholls			
Highland Park Kindergarten	LB to make contact, offering		Yvette Nicholls			
Cockle Bay Private Kindergarten	LB to make contact, offering	Zeena Raheem- Owner and Director	Yvette Nicholls			
St Kentigern	LB to make contact, offering info session		Matt Poland	Inform, consult		Meetings with Principal/Facilities Manager. Newsletter (for students to take home to parents). Follow up letters and/or emails to Principal.
Sports Clubs						
Pakuranga Rugby League Club			Jon Bennetts	Inform, consult		letters, meetings, workshops
Fencibles AFC			Jon Bennetts			
Pakuranga Athletics Club			Jon Bennetts	Inform, consult		letters, meetings, workshops
Lagoon Stadium			Jon Bennetts	Inform, consult		letters, meetings, workshops
	LB to check with Cathy re who to contact		Jon Bennetts			
Pakuranga United Rugby Club	Cathy re who to	Rob Neil Chairman	Jon Bennetts			
Howick Pakuranga Cricket Club	Cathy re who to contact	Lindsay Rewcastle – Chairman	Jon Bennetts			
Koru Tennis Club	LB to check with Cathy re who to contact		Jon Bennetts			
Pakuranga Tennis Club Inc	Cathy re who to contact		Jon Bennetts			
Pakuranga Bowling Club	Cathy re who to contact		Jon Bennetts			
Howick Pakuranga Swim Club	LB to check with Cathy re who to contact	Vicki Ashley Club Administrator	Jon Bennetts			
Lloyd Elsmore Park Badminton Club	LB to check with Cathy re who to contact	Robert Bryce Club President	Jon Bennetts			

Pakuranga Croquet Club	LB to check with Cathy re who to contact	Gill Warn- Club President	Jon Bennetts			
Howick Assn Football Club	LB to check with Cathy re who to contact		Jon Bennetts			
Howick Gymnastic Club	Cathy re who to contact		Jon Bennetts			
Pakuranga Golf Club	Cathy re who to contact	David Clifton	Jon Bennetts			
Pakuranga Sailing Club	Cathy re who to contact	Commodore - Wayne Barnes	Jon Bennetts			
Panmure Squash Rackets Club	Cathy re who to contact		Jon Bennetts			
Panmure Yacht & Boating Club	Cathy re who to contact	Nick Hoyles (Commodore)	Jon Bennetts			
Tamaki Outrigger Canoe Club	LB to check with Cathy re who to contact	President Sam Walters Mobile: 0277057270 Email: scwalters46@yahoo.co.n	Jon Bennetts			
Panmure Lagoon Sailing Club	Cathy re who to contact	Chantal Grace (Commodore)	Jon Bennetts			
Auckland Iaido Club	LB to check with Cathy re who to contact	Brent Hansen	Jon Bennetts			
Dunkirk Road Activity Centre	Cathy re who to contact	Tracey Fausett (Centre Manager)	Jon Bennetts			
Auckland Kendo Club	Cathy re who to contact	Graham Sayer	Jon Bennetts			
Pakuranga Outrigger Canoe Club	LB to check with Cathy re who to contact	Secretary Lisa Tua'a	Jon Bennetts			
Bucklands Beach Yacht Club	LB to check with Cathy re who to contact		Jon Bennetts			
Howick Sailing Club	Cathy re who to contact	Marc Frewin-Commodore	Jon Bennetts			
Howick Club Inc.	Cathy re who to contact	Rita Bell	Jon Bennetts			
Howick Bowling Club	Cathy re who to contact	John Hector-Taylor & Robyn Downs	Jon Bennetts			
Cockle Bay Tennis Club	LB to check with Cathy re who to contact	Vicki Ashley	Jon Bennetts			
Marist Brothers Old Boys Rugby Club	Cathy re who to contact	Des Topp Administration Officer	Jon Bennetts			
Panmure YMCA	Cathy re who to		Jon Bennetts	Inform, consult		letters, meetings, workshops
Disability Specialists						

Royal New Zealand Foundation for the Blind	LB to contact Vivien	Vivien Naylor (accessibility), Richard Hoskin, Chair of Board	Jon Bennetts	Inform, consult		
CCS Disability	LB to contact Vivien	Vivien Naylor (accessibility), Local Advisory Chair Allyson Hamblett or Anna Nelson	Jon Bennetts	Inform, consult		
DCS Incorp.	LB to contact Vivien	Vivien Naylor (accessibility), Gordon Lowe (Total Mobility Scheme)	Jon Bennetts	Inform, consult		Consultation through the the TAG group - confirm process with Paul.D.Brown@aucklandcouncil.govt.nz; Martine.Abel@aucklandcouncil.govt.nz
Elderly Assist			Jon Bennetts			
Mobility Auckland			Jon Bennetts			
Government:						
MOT				Inform		Presentation updates Meetings Written updates
DOC			TBC			
NZTA, Communications				Inform		Presentation updates Meetings Written updates
NZTA - effects on the network (Sarah Ho)			Aimee Simons			
MBIE			TBC			
Housing New Zealand			TBC			
NZ Historic Places Trust (consult at detailed design stage)			Matt Poland	Inform		Presentation updates Meetings Written updates
Tamaki Regeneration Company Ltd			Matt Poland			
Panmure Squash Rackets Club				Inform		Presentation updates Meetings Written updates
Pakuranga Library			Jon Bennetts	Inform		Presentation updates Meetings Written updates
Pakuranga Medical Centre		Reception Team Robyn Kirsten Ashley Judy Jackie Natasha	Jon Bennetts	Inform		Presentation updates Meetings Written updates
The Pakuranga Leisure Centre			Jon Bennetts	Inform		Presentation updates Meetings Written updates
Riverina School		Caroline Chawke (Principal)	Jon Bennetts	Inform		Presentation updates Meetings Written updates

Marian Early Childhood Centre			Jon Bennetts	Inform		Presentation updates Meetings Written updates
Physio Absolute		Madeline Hernon (General Manager and Clinic Director), Christine Sharma (Medical Receptionist)	Jon Bennetts	Inform		Presentation updates Meetings Written updates
DW Family Doctors		Receptionists: Yoyo, Kera	Jon Bennetts	Inform		Presentation updates Meetings Written updates
St Matthias Anglican Church		Vicar Paul Ashman	Jon Bennetts	Inform		Presentation updates Meetings Written updates
St Patrick's Catholic Church		Rebecca Knibb, Cathedral Secretary ~ Jackie Charkow, Cathedral Secretary ~	Jon Bennetts	Inform		Presentation updates Meetings Written updates
East Auckland Islamic Trust		Masjid e Abu Bakr: Chairman: Moh'd. Rafique MUNIF	Jon Bennetts	Inform		Presentation updates Meetings Written updates
Christadelphian Hall			Jon Bennetts	Inform		Presentation updates Meetings Written updates
Panmure Police Station			Jon Bennetts	Inform		Presentation updates Meetings Written updates
Panmure Fire Station			Jon Bennetts	Inform		Presentation updates Meetings Written updates
Panmure Community Library and Citizens Advice Bureau			Jon Bennetts	Inform		Presentation updates Meetings Written updates
Pakuranga Electorate Office			Jon Bennetts	Inform		Presentation updates Meetings Written updates
Panmure Business Association - Chris Sutton		Chris Sutton	Jon Bennetts	Inform		Presentation updates Meetings Written updates

Heritage NZ		Northern Regional Office General Manager: Sherry Reynolds Area Coordinator: Antony Phillips.	Jon Bennetts	Inform		Presentation updates Meetings Written updates
Howick Historical Village			Jon Bennetts	Inform		Presentation updates Meetings Written updates
Geoscience Society of NZ - Bruce W Hayward, Geomarine Research		Bruce Hayward	Jon Bennetts	Inform		Presentation updates Meetings Written updates

Real Estate Agents						
Barfoot & Thompson		Linda Fitzpatrick- Branch Manager	Matt Poland			
Ray White		Christine Fowler- Licensee Branch	Matt Poland			
Harcourts Botany		Preet Grewal - Managing Director	Matt Poland			
CENTURY 21 Edwards Realty		Annette Edwards Principal and Sales	Matt Poland			
			Matt Poland			
Pakuranga & Howick Realty MREINZ		Marie-Claire Lamb- Manager	Matt Poland			
Barfoot & Thompson Panmure		Chris Swann_ Branch Manager	Matt Poland			
Ray White Pakuranga		Christine Fowler- Licensee Branch	Matt Poland			
Barfoot & Thompson Pakuranga		Grant Paitry- Branch Manager	Matt Poland			
Harcourts Preet & Co - Pakuranga		Alan Owens- Branch manager	Matt Poland			
			Matt Poland			
Professionals Lovegrove Realty - Eastern Suburbs		Claire Halliday- Administrator	Matt Poland			
Mike Pero Real Estate Highland Park		Suzanne McDowell	Matt Poland			
Penelope Franca Real Estate		Penelope Franca	Matt Poland			
Barfoot & Thompson Highland Park		Suzanne MacLean- Branch Manager	Matt Poland			

Pakuranga & Howick Realty		Branch Manager Paul Judd	Matt Poland			
Wider community						
General public (Panmure, Pakuranga, Botany, Howick, Flatbush)		Matt Poland	Matt Poland	Inform, consult		Public Open Day(s). Project Newsletter(s). Newspaper Article. Project Website.



4 Reliable Way
Mt Wellington
Auckland 1060
Private Bag 11900
Ellerslie, Auckland 1542

Telephone +64 9 579 6187

www.fultonhogan.com