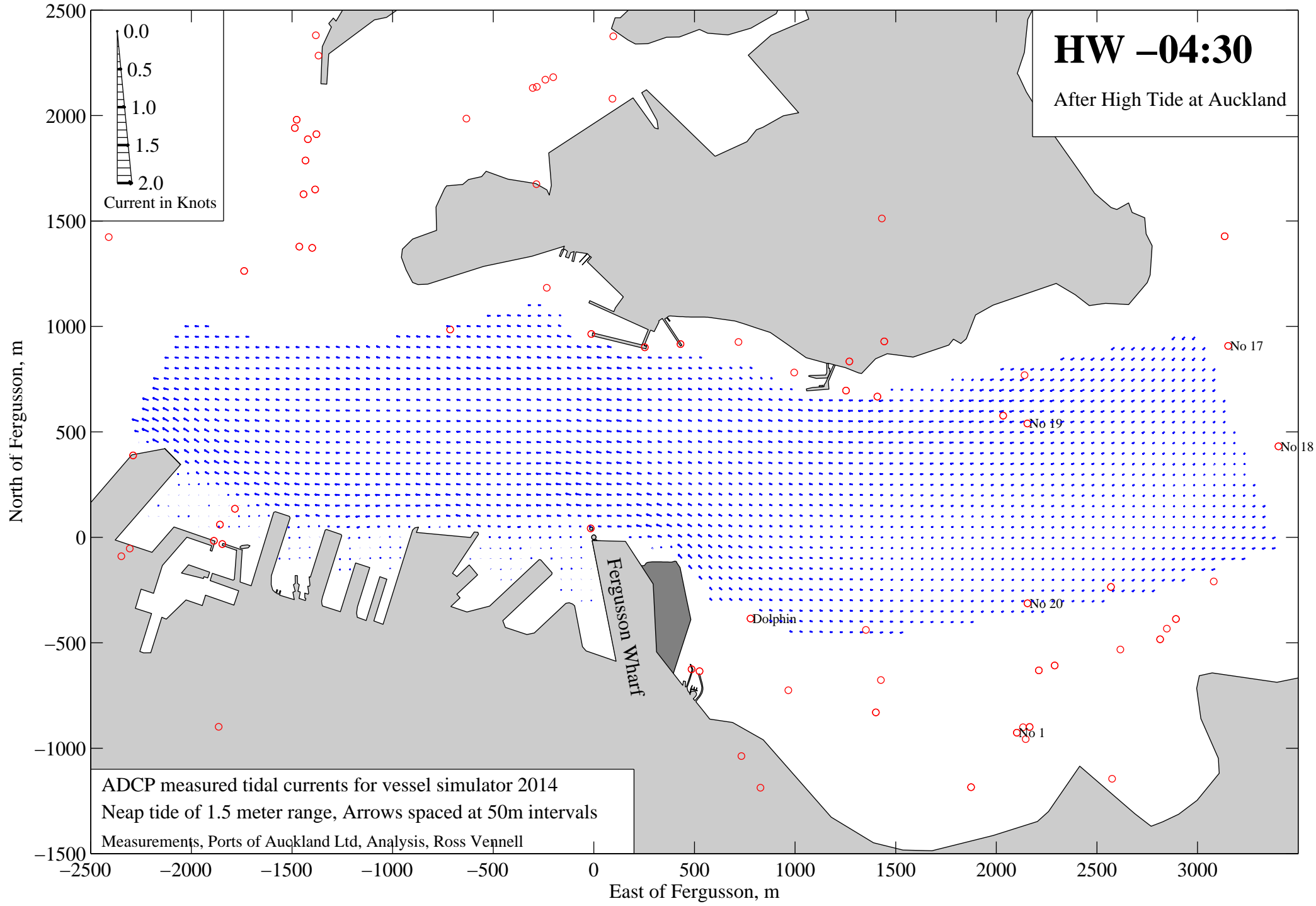


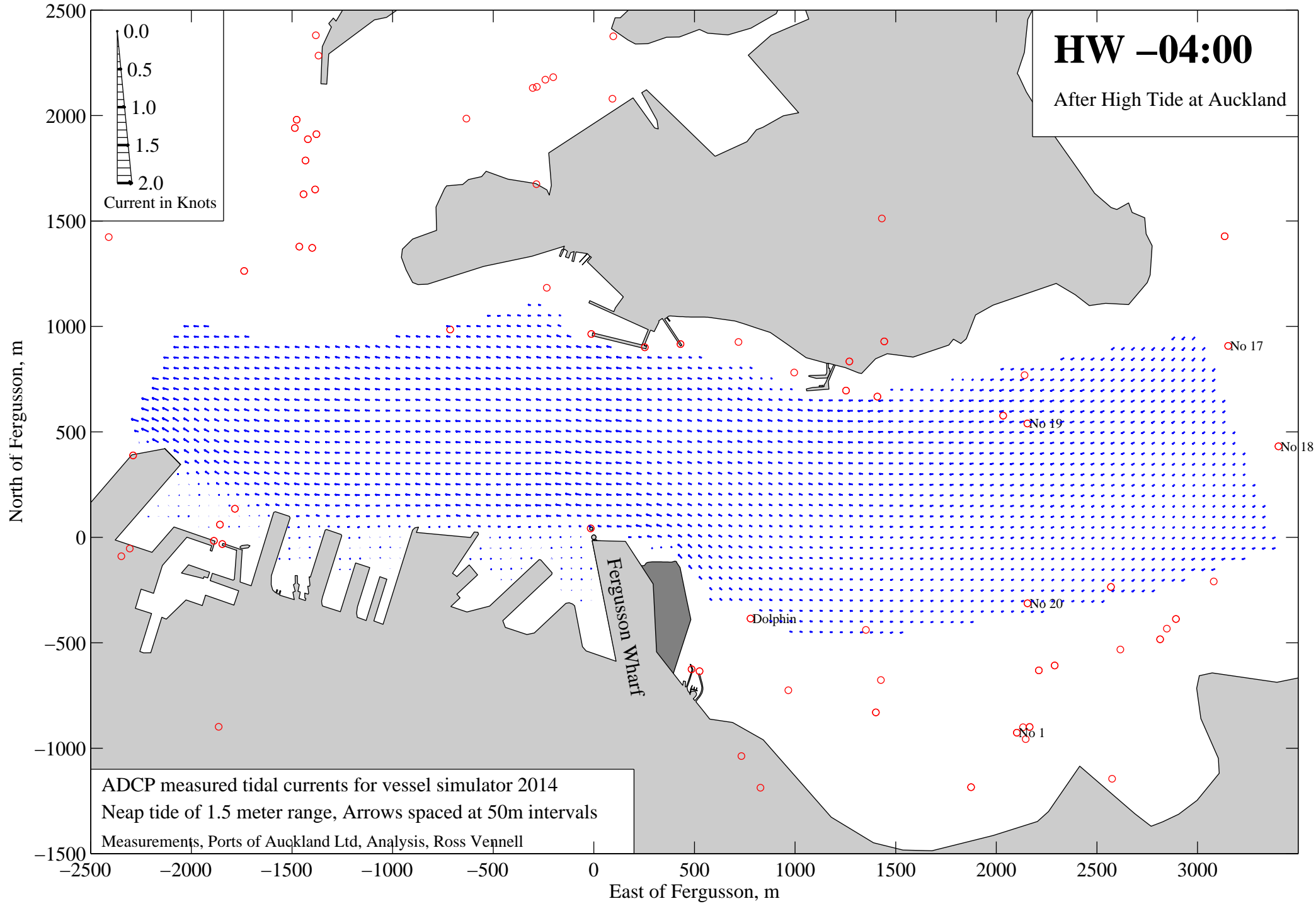
**HW -05:00**  
 After High Tide at Auckland

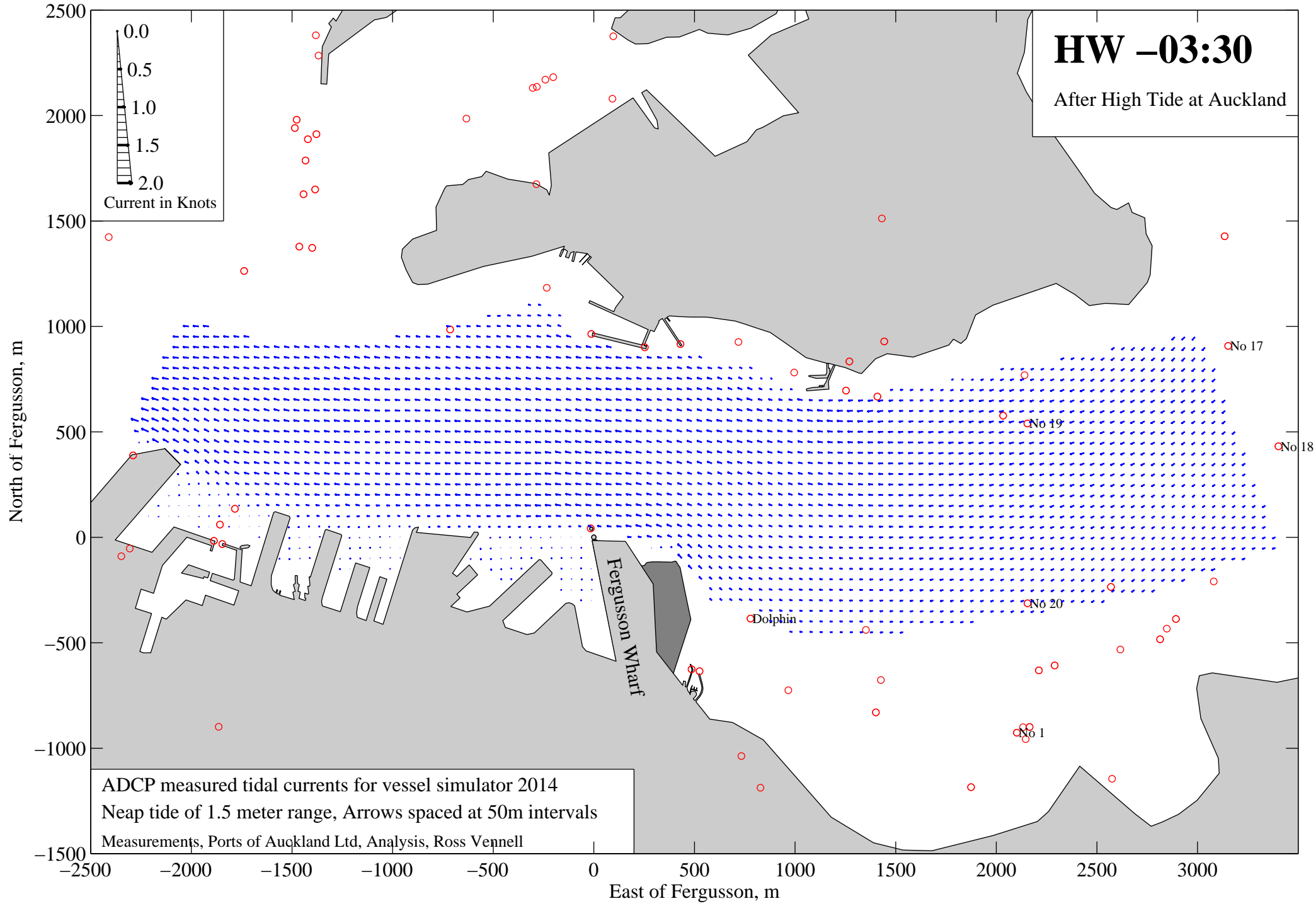
ADCP measured tidal currents for vessel simulator 2014  
 Neap tide of 1.5 meter range, Arrows spaced at 50m intervals  
 Measurements, Ports of Auckland Ltd, Analysis, Ross Vennell

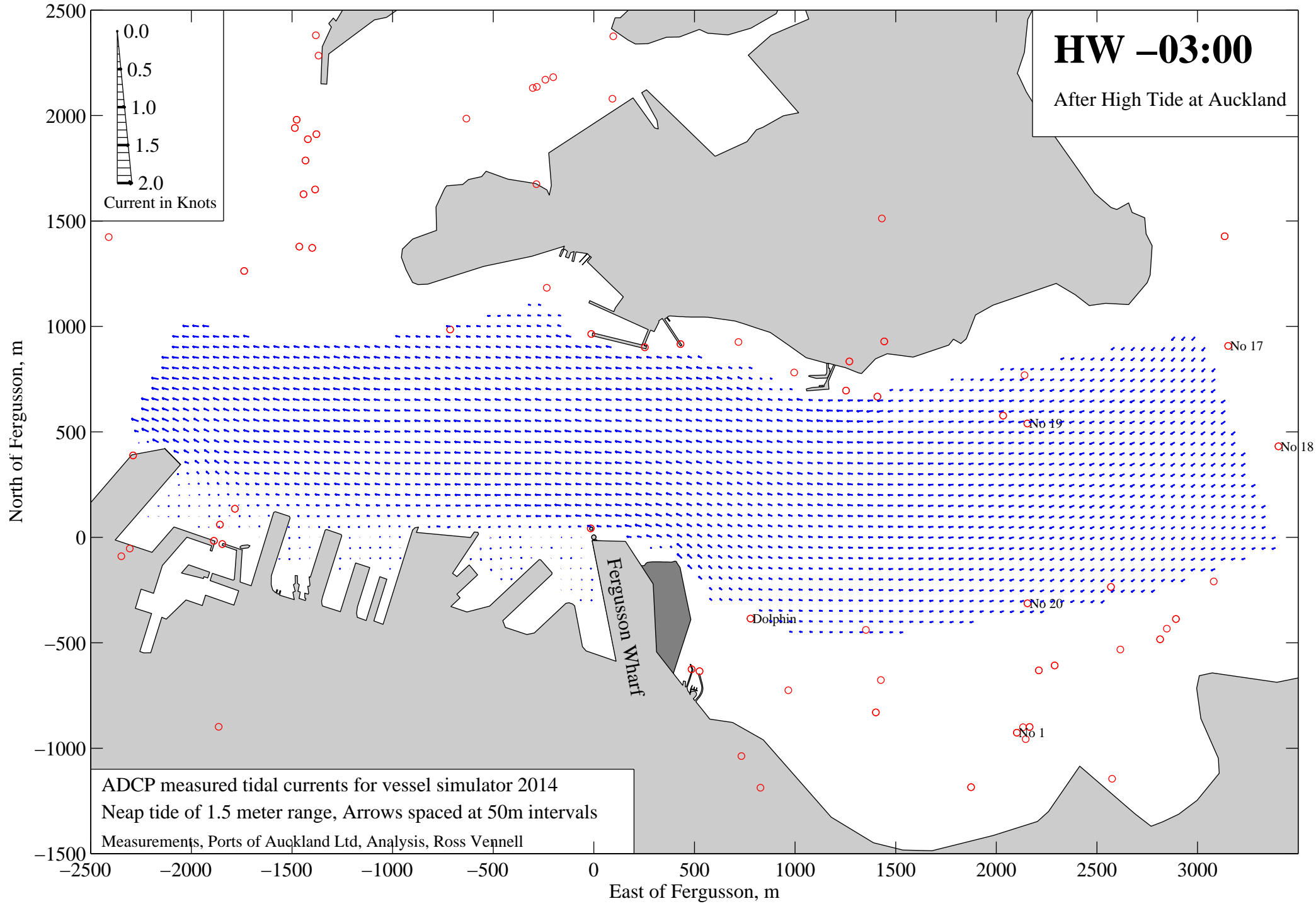


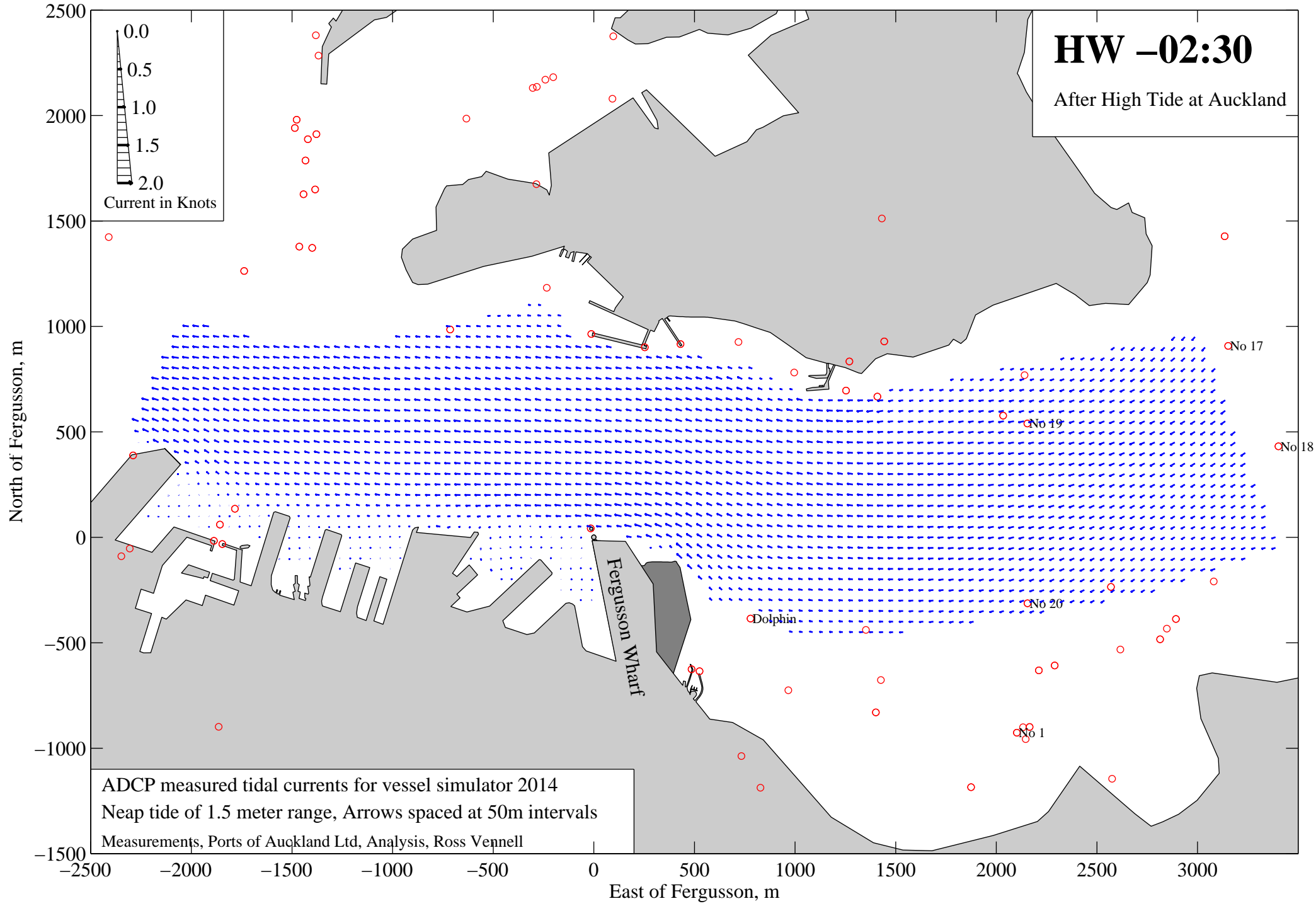
**HW -04:30**  
 After High Tide at Auckland

ADCP measured tidal currents for vessel simulator 2014  
 Neap tide of 1.5 meter range, Arrows spaced at 50m intervals  
 Measurements, Ports of Auckland Ltd, Analysis, Ross Vennell

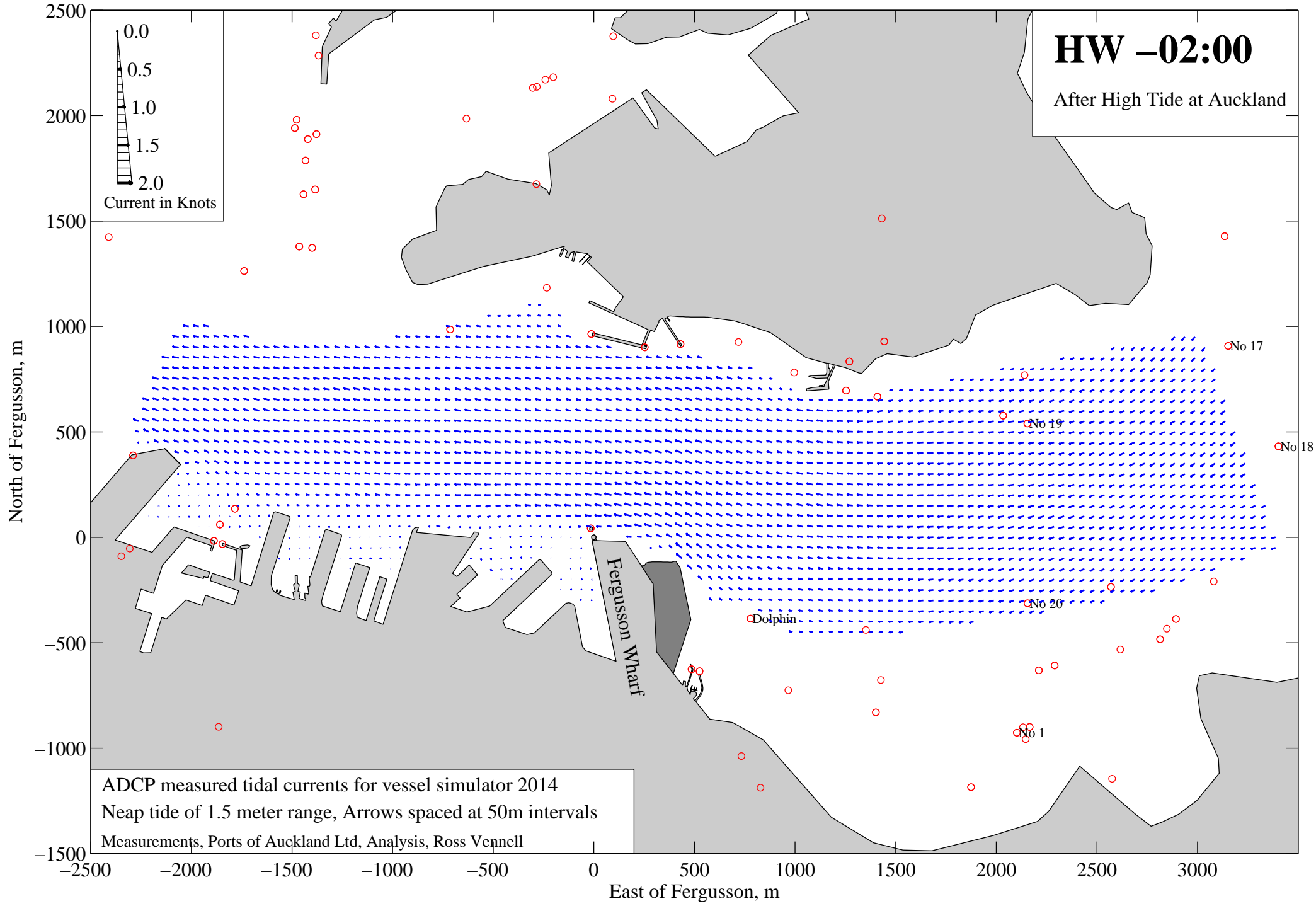


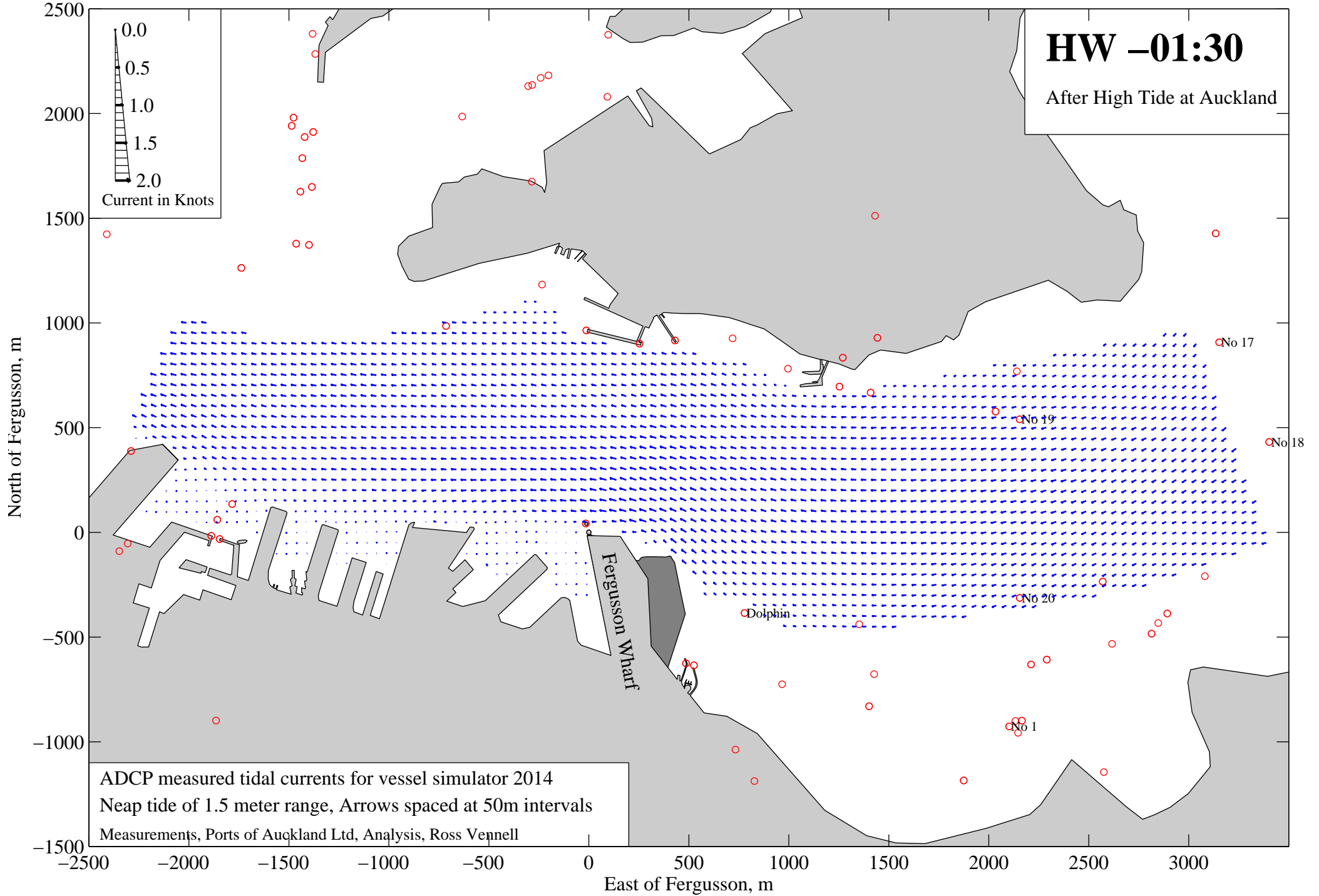


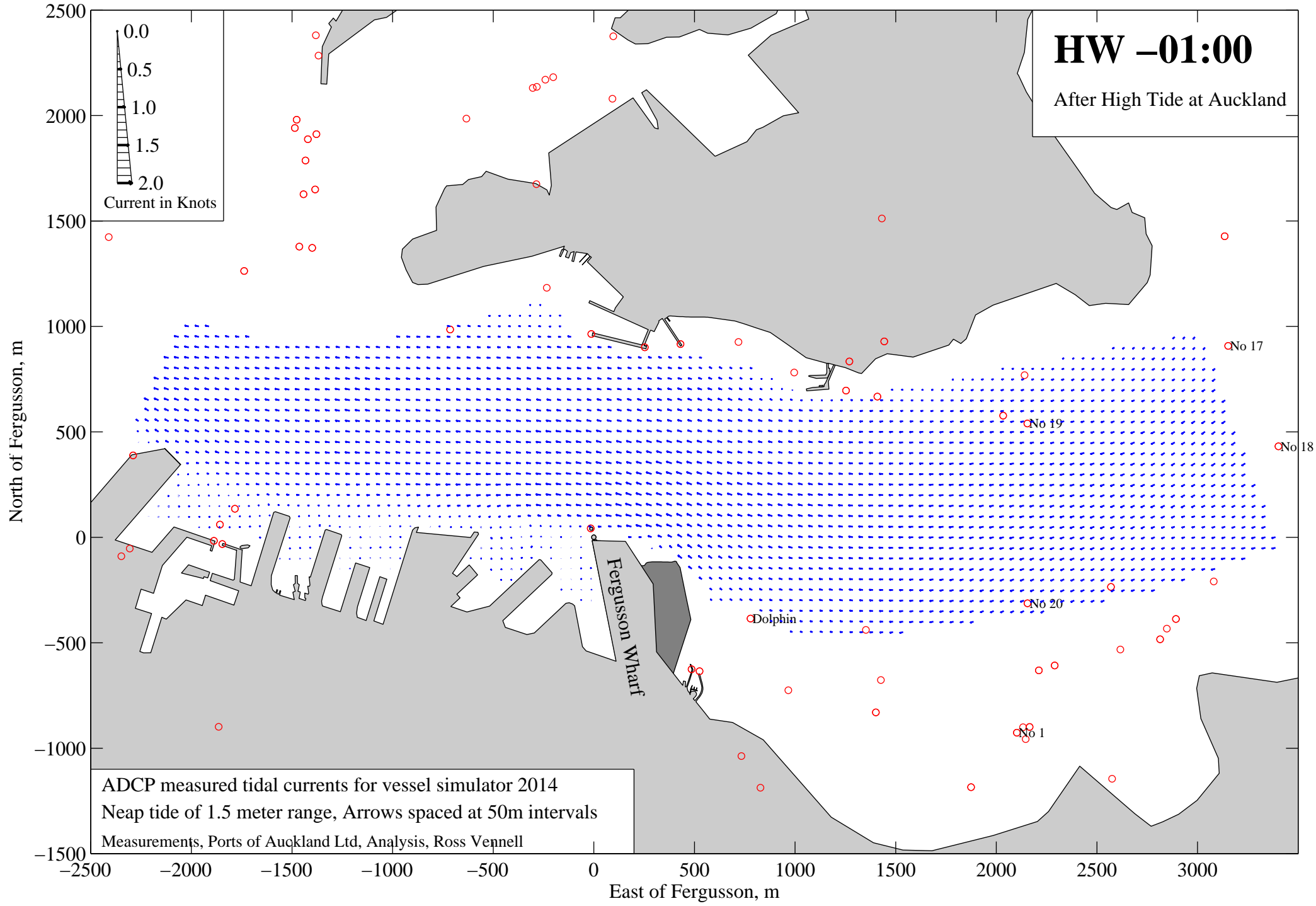


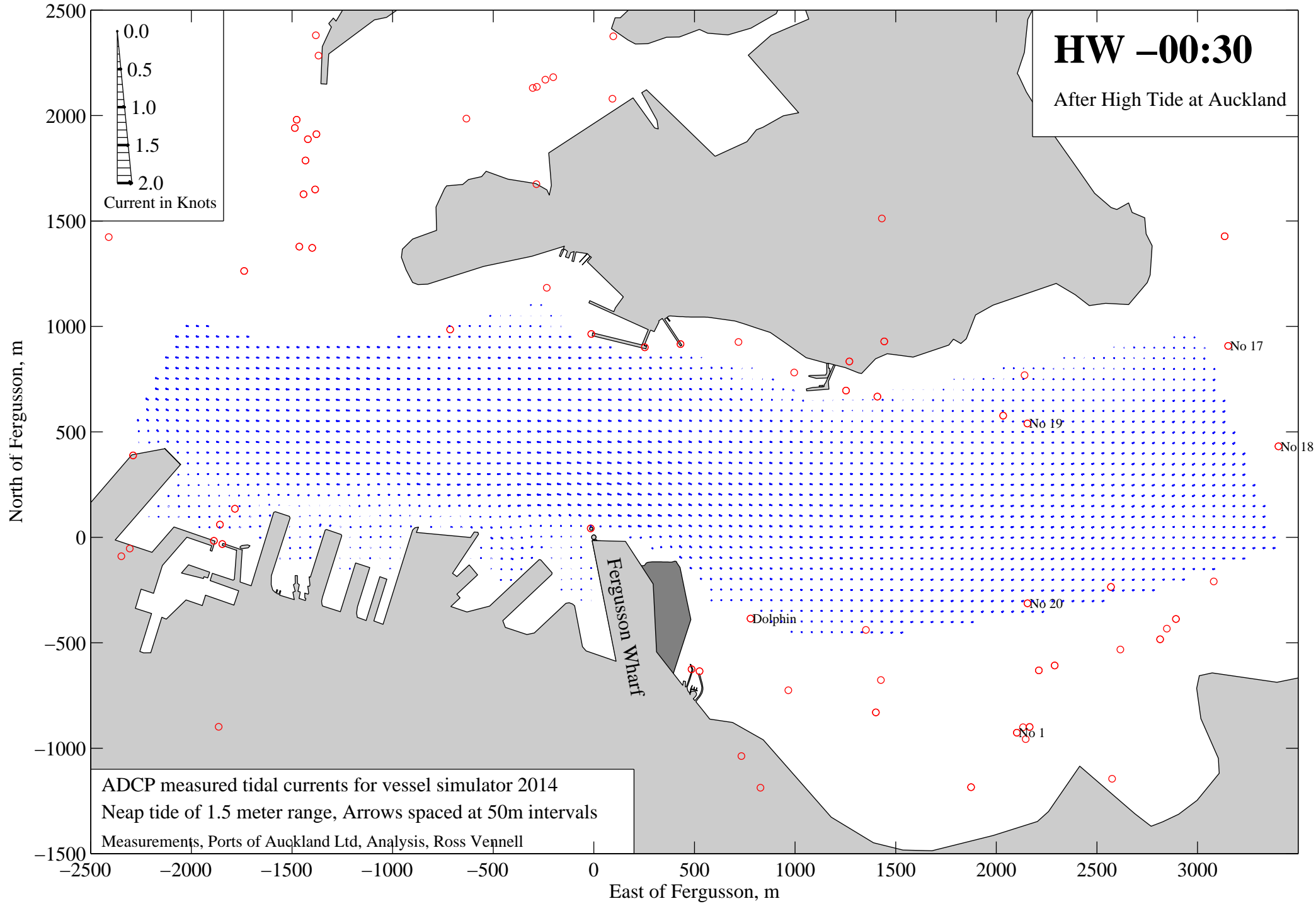


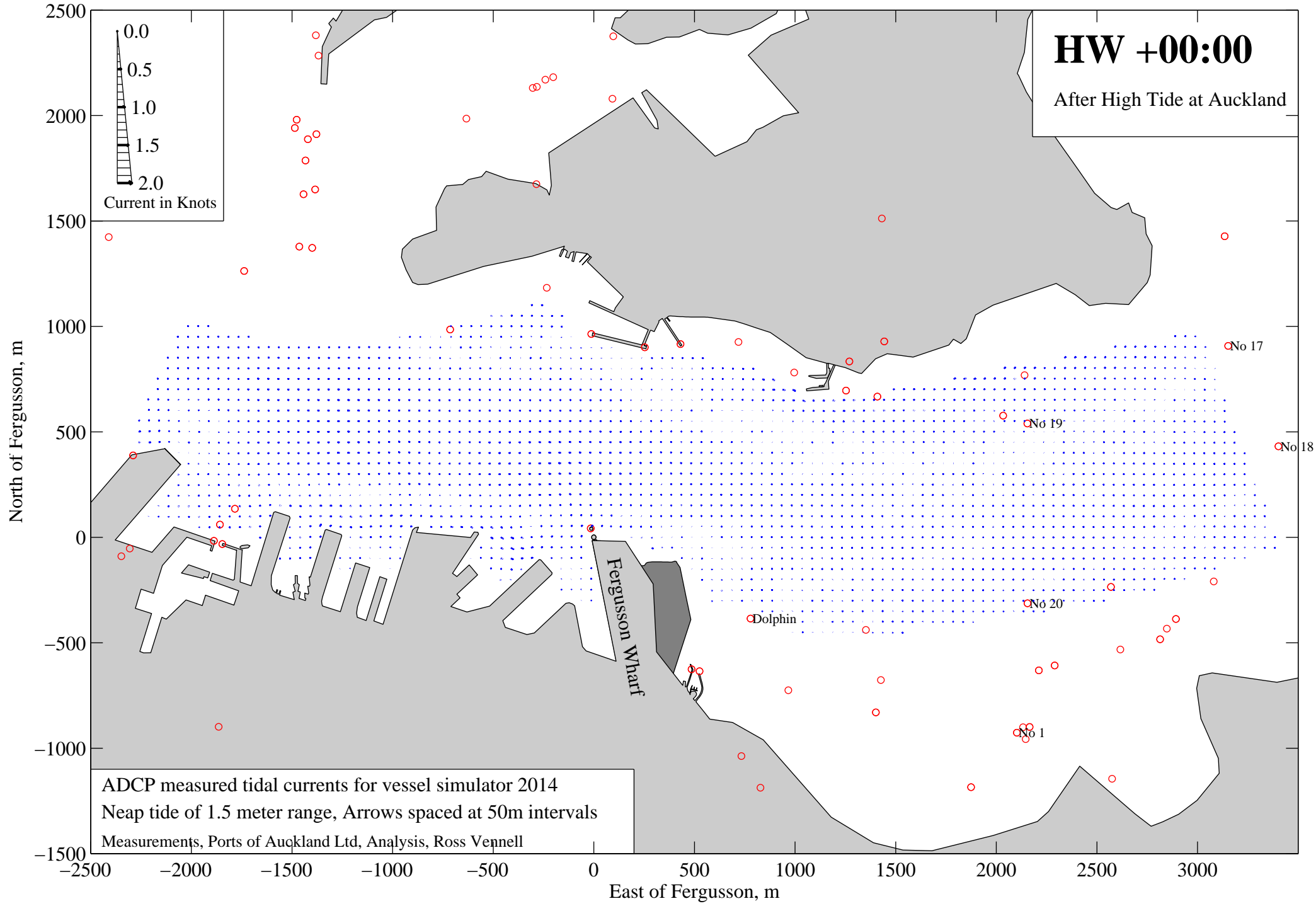


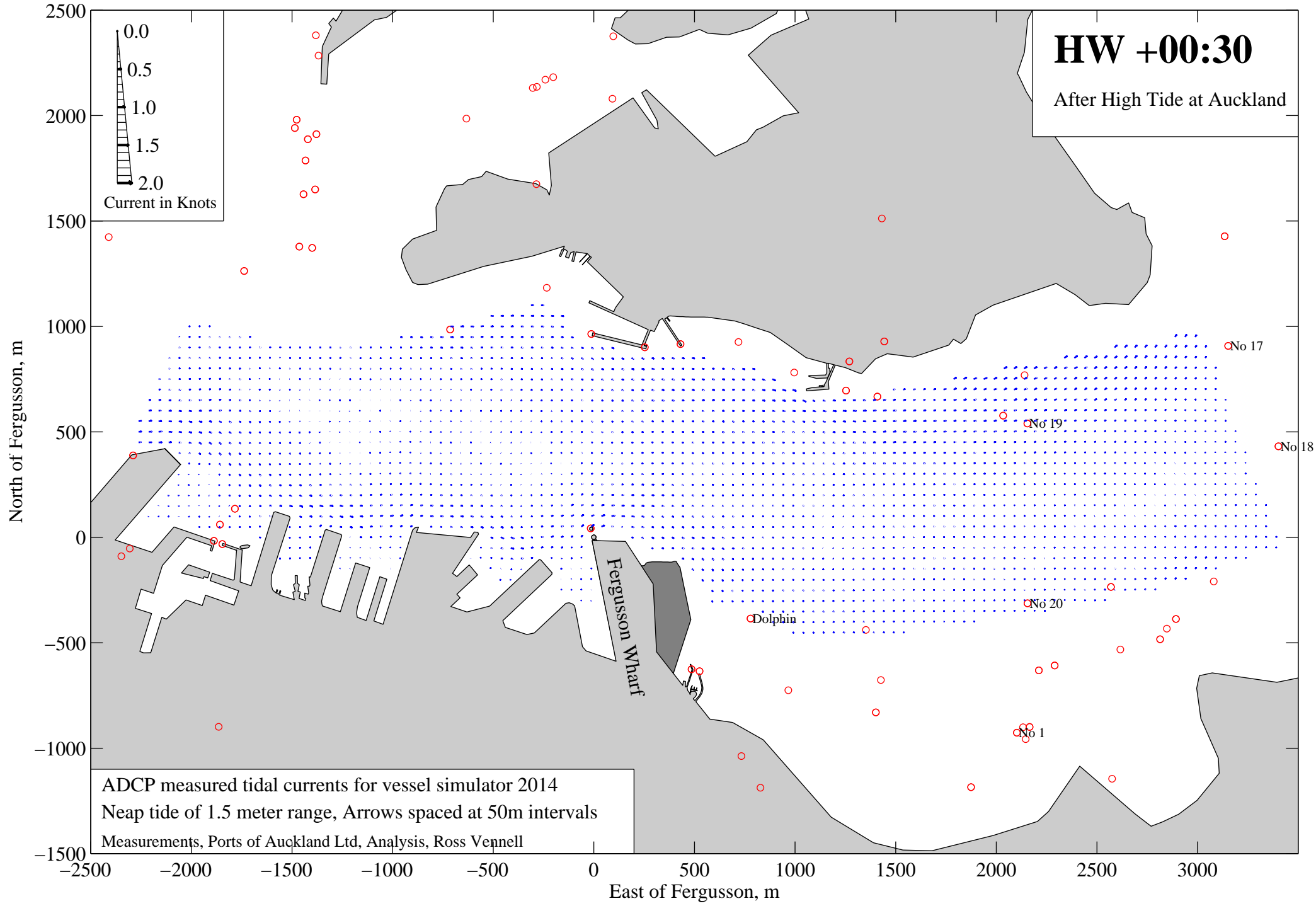


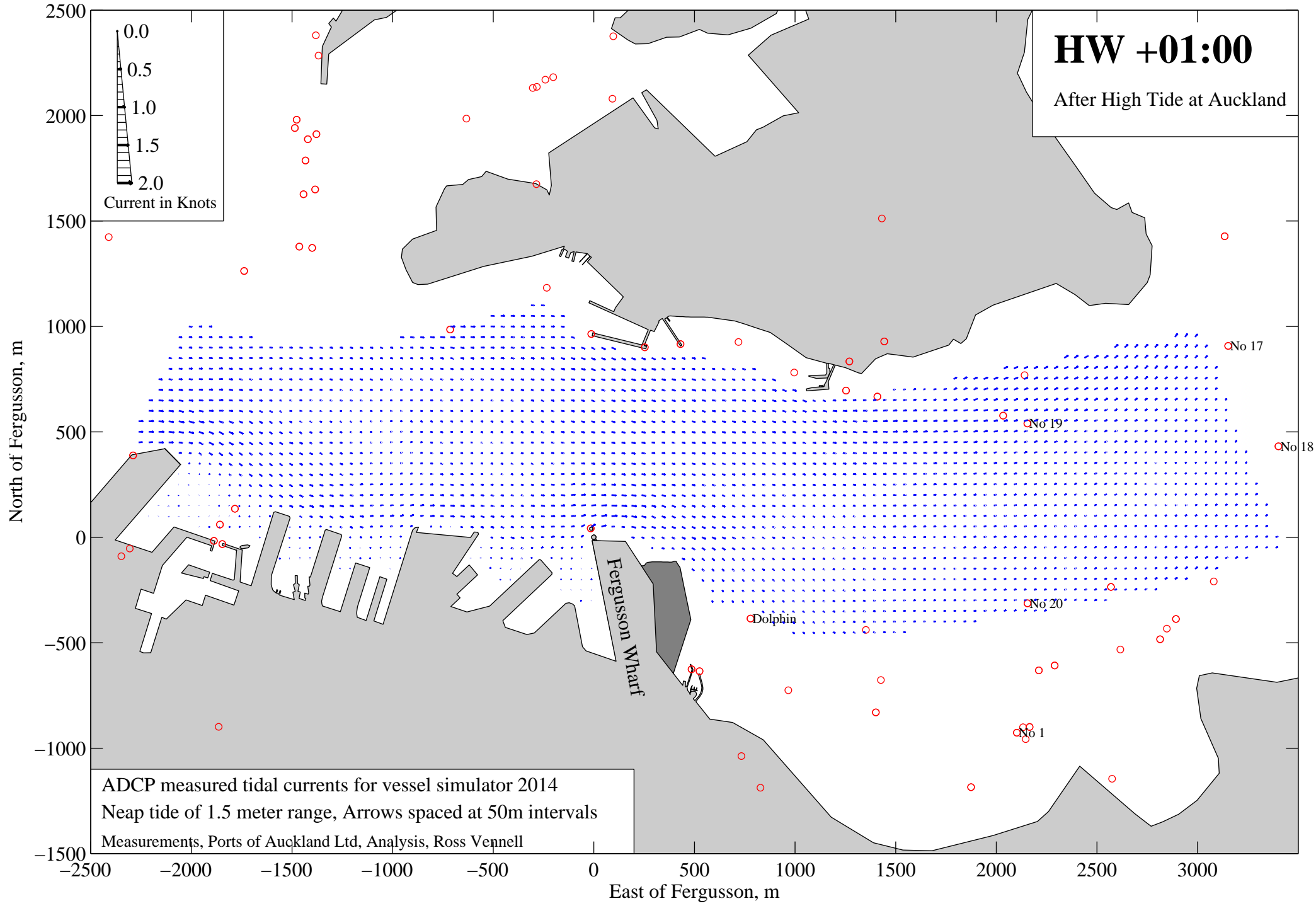


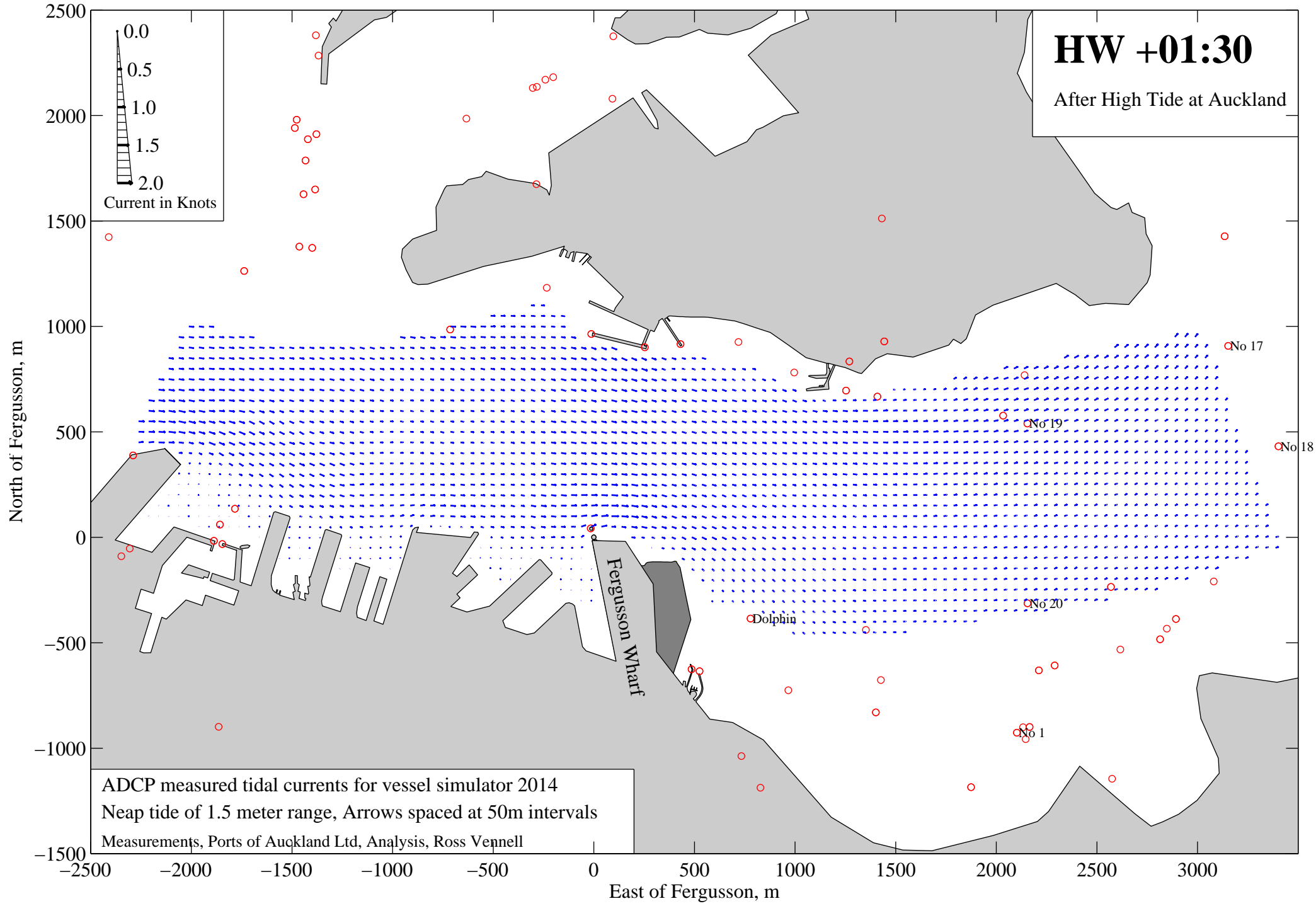








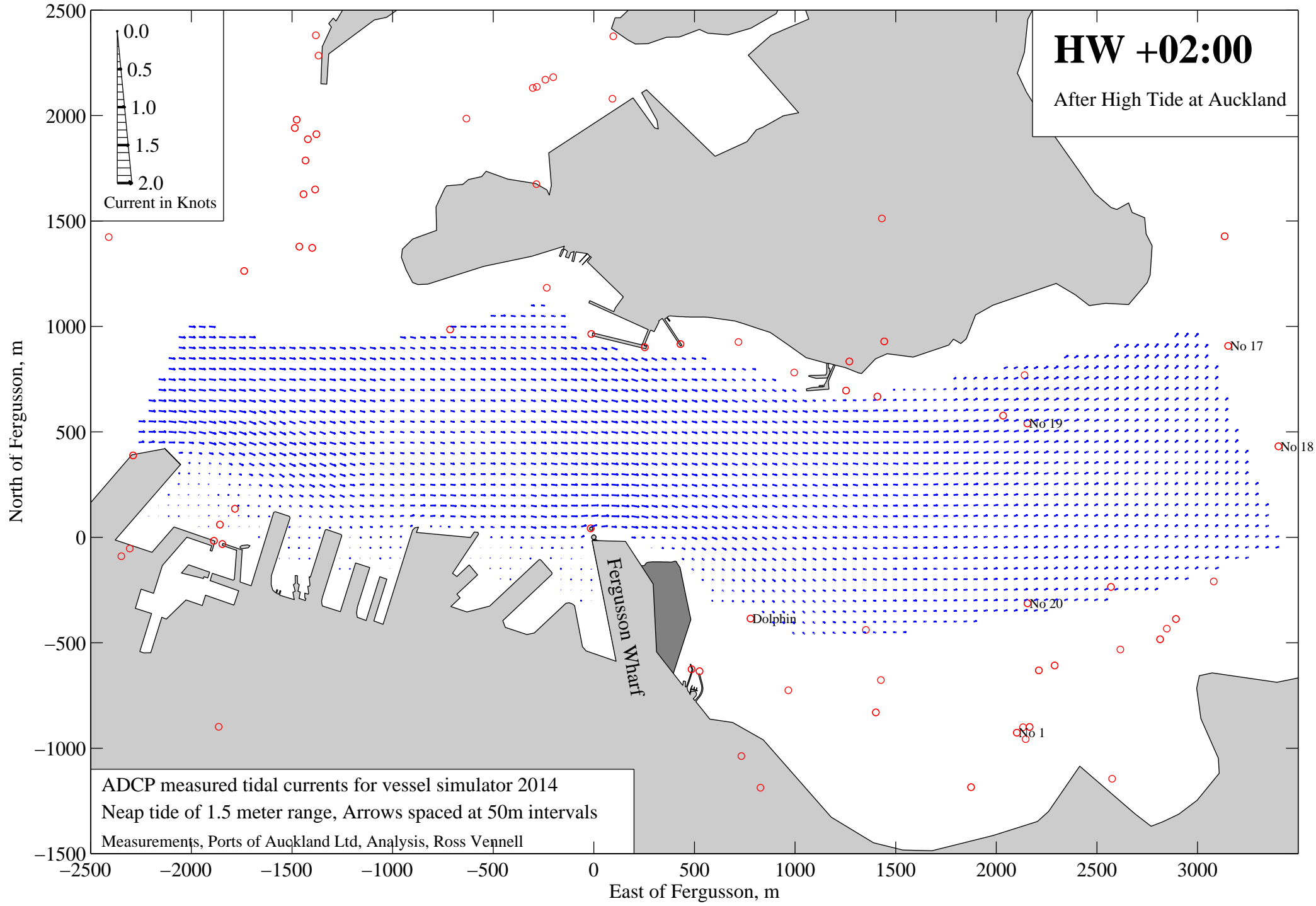


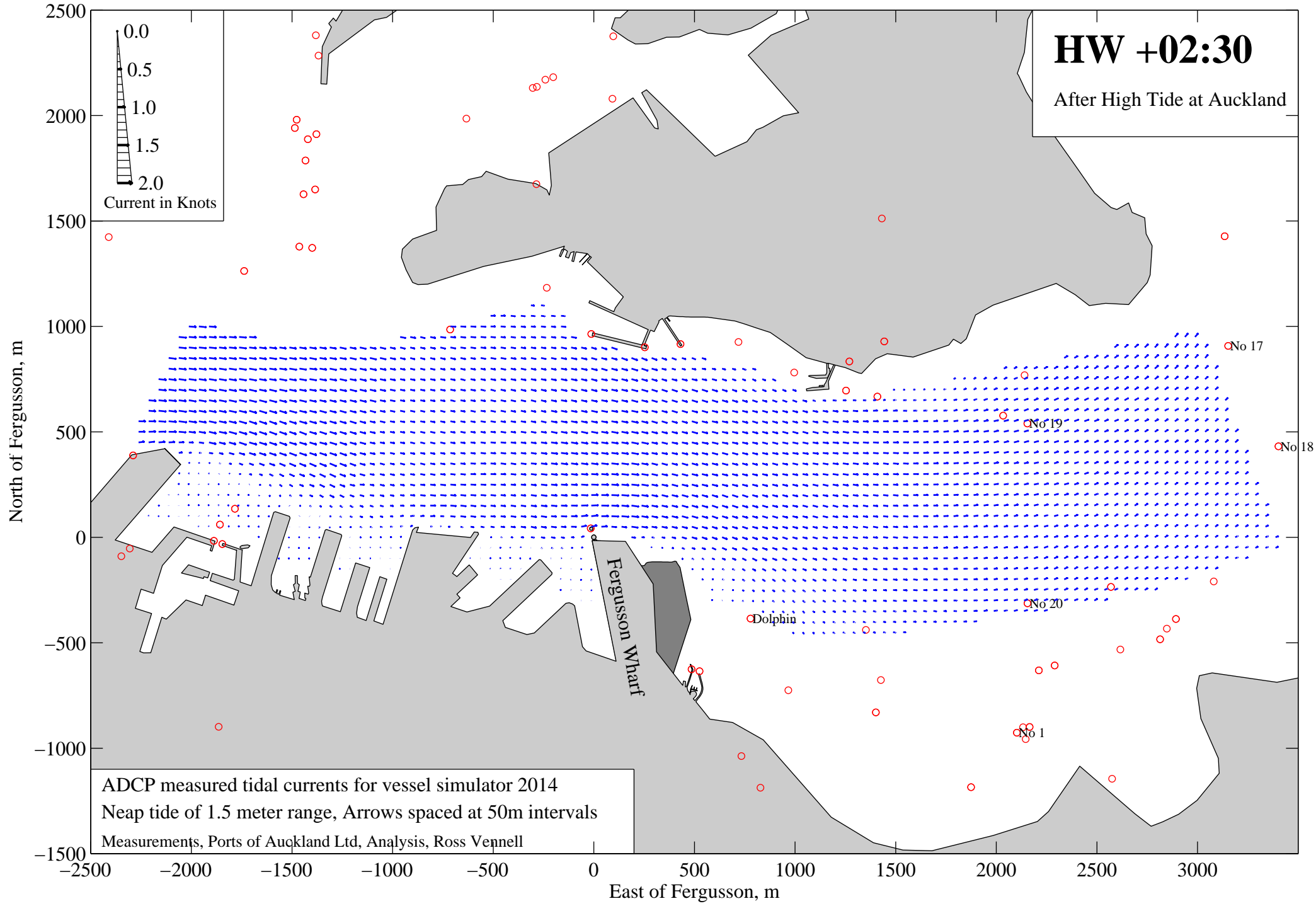


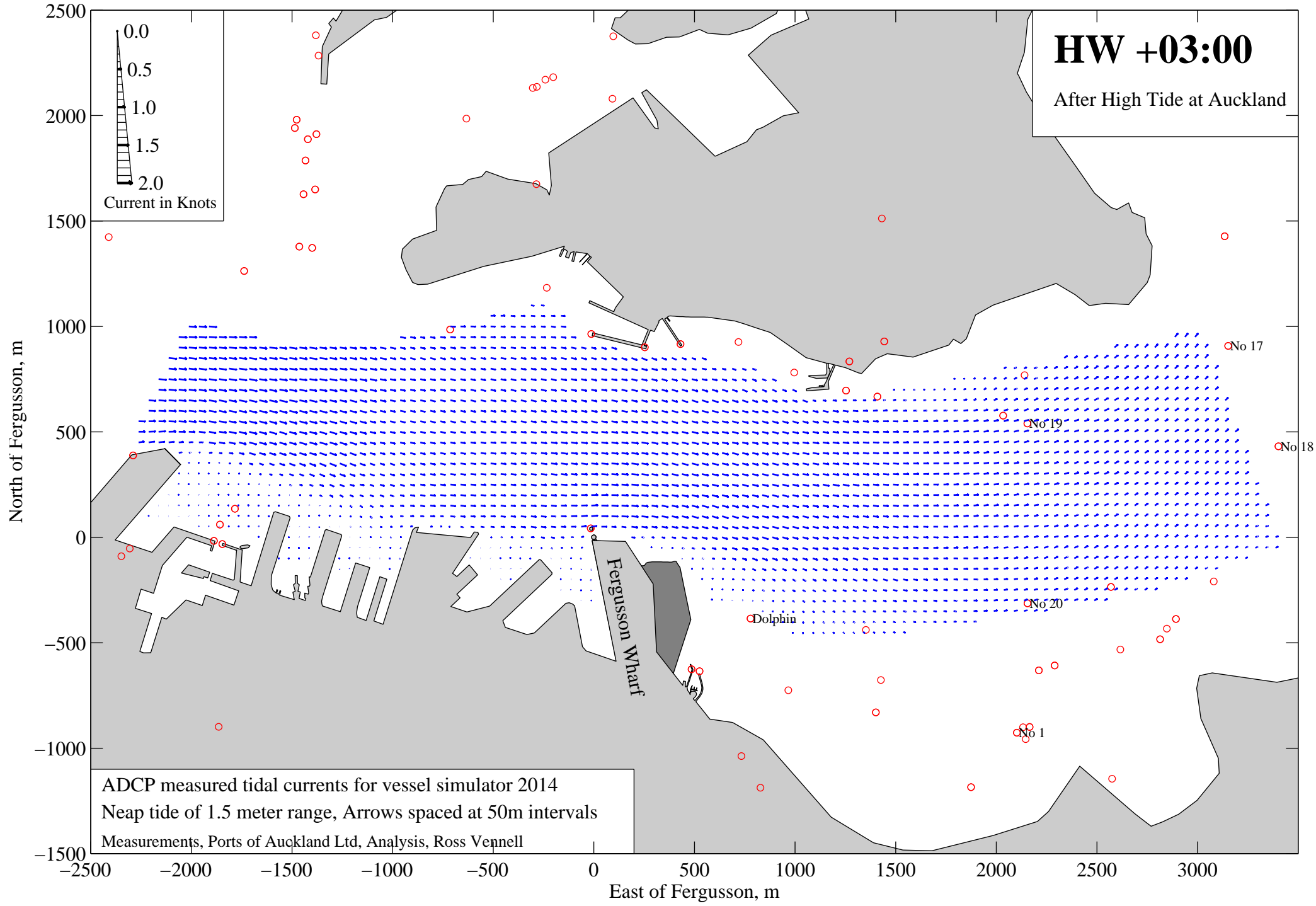
**HW +01:30**  
 After High Tide at Auckland

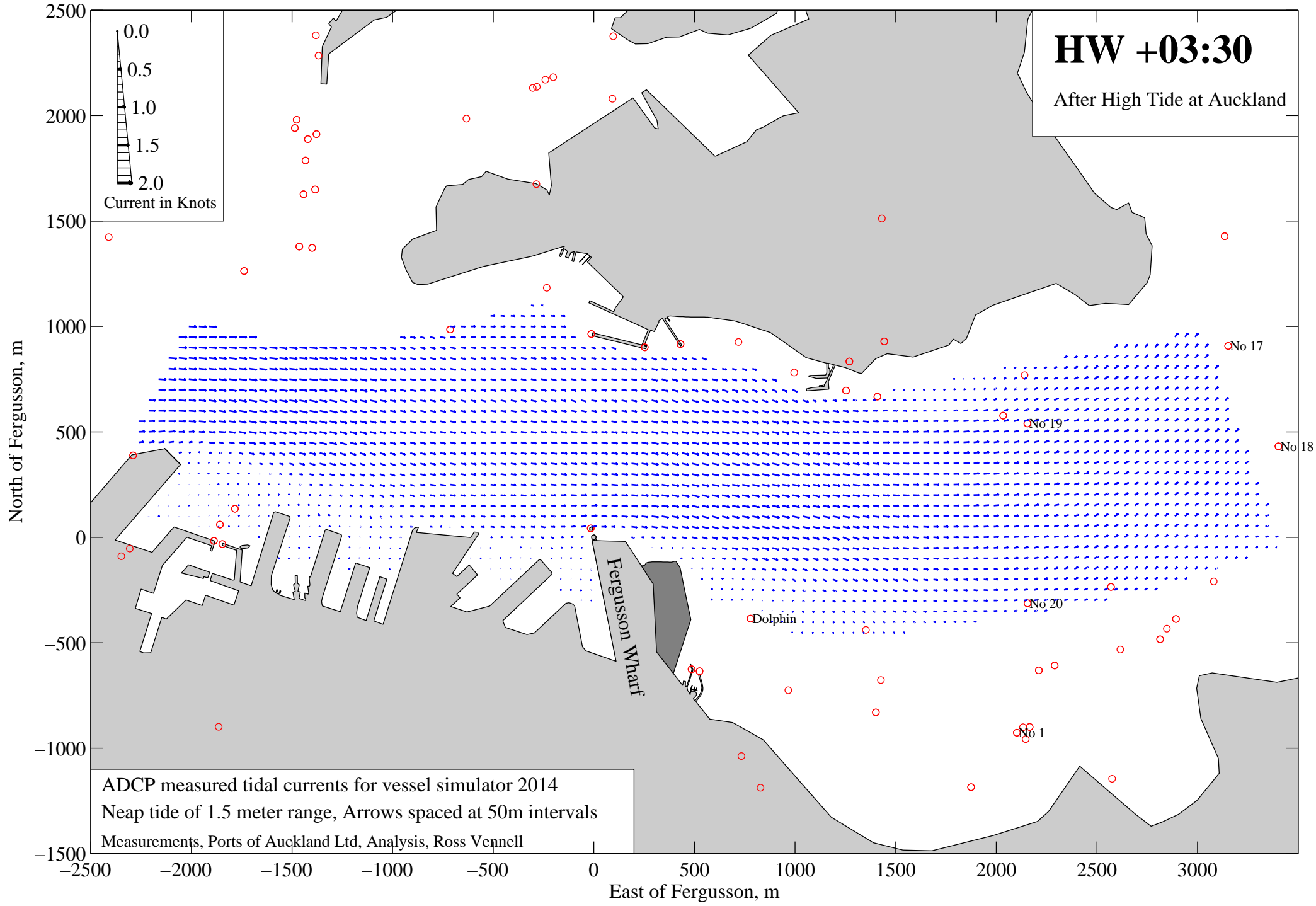
ADCP measured tidal currents for vessel simulator 2014  
 Neap tide of 1.5 meter range, Arrows spaced at 50m intervals  
 Measurements, Ports of Auckland Ltd, Analysis, Ross Vennell

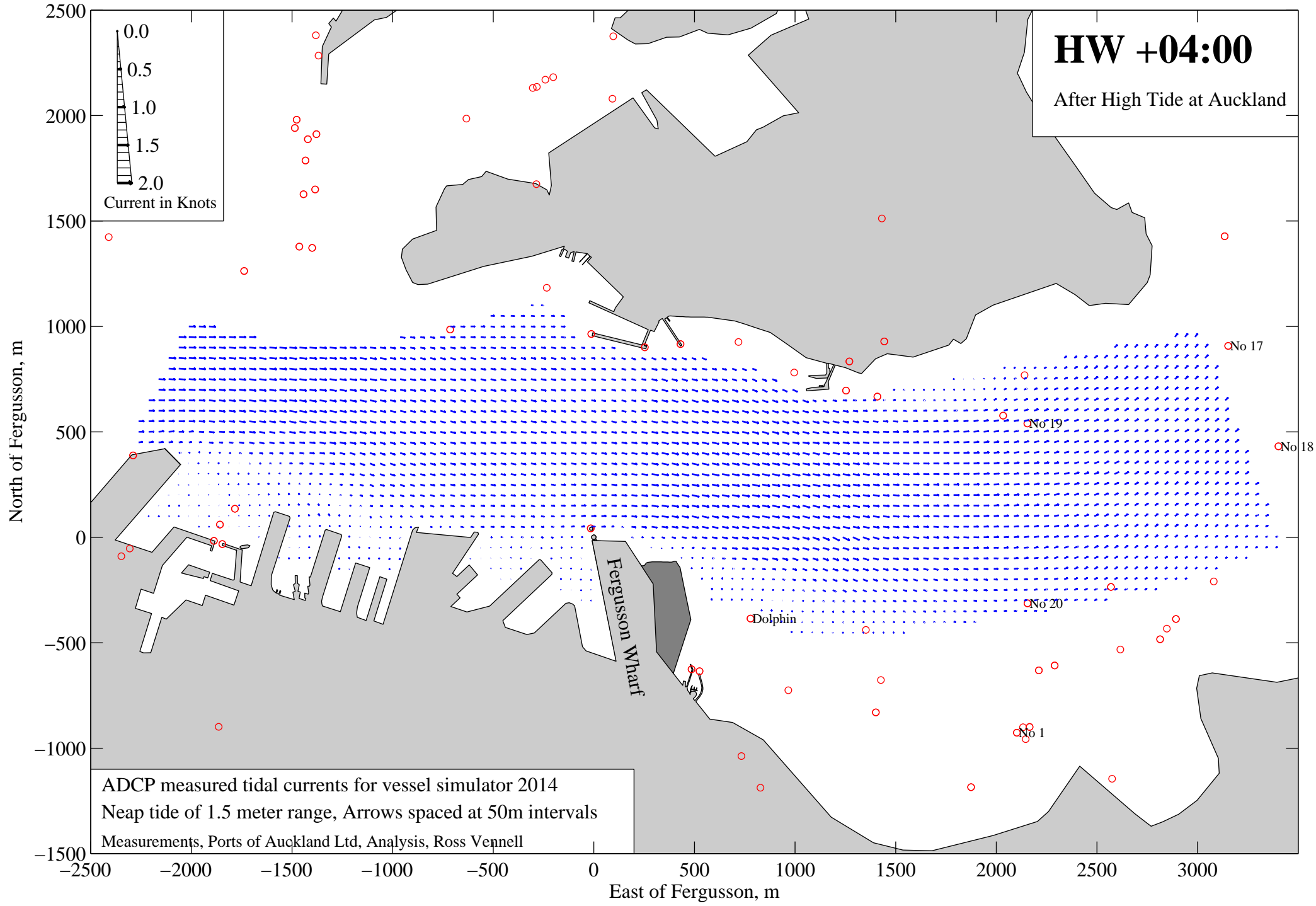


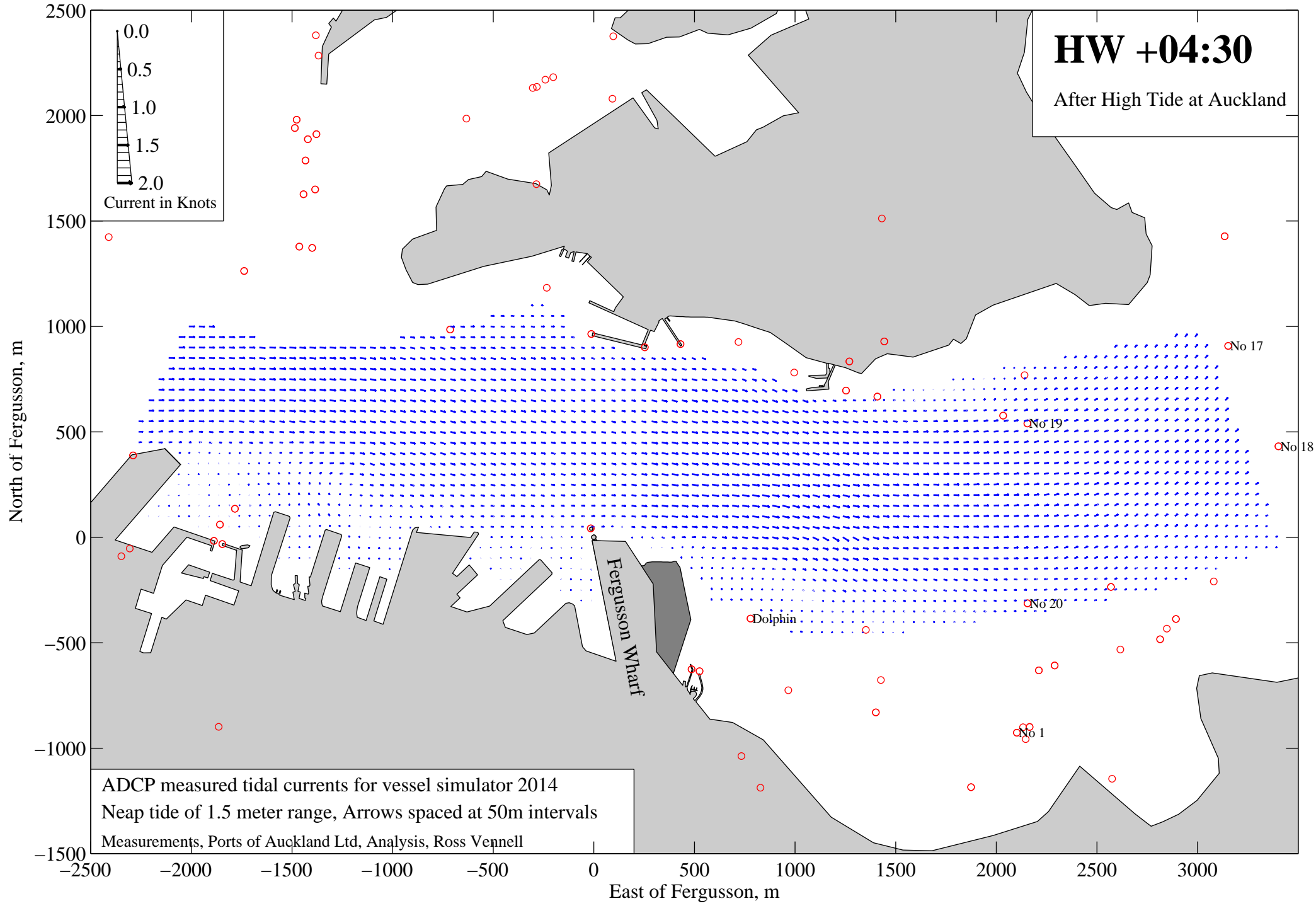


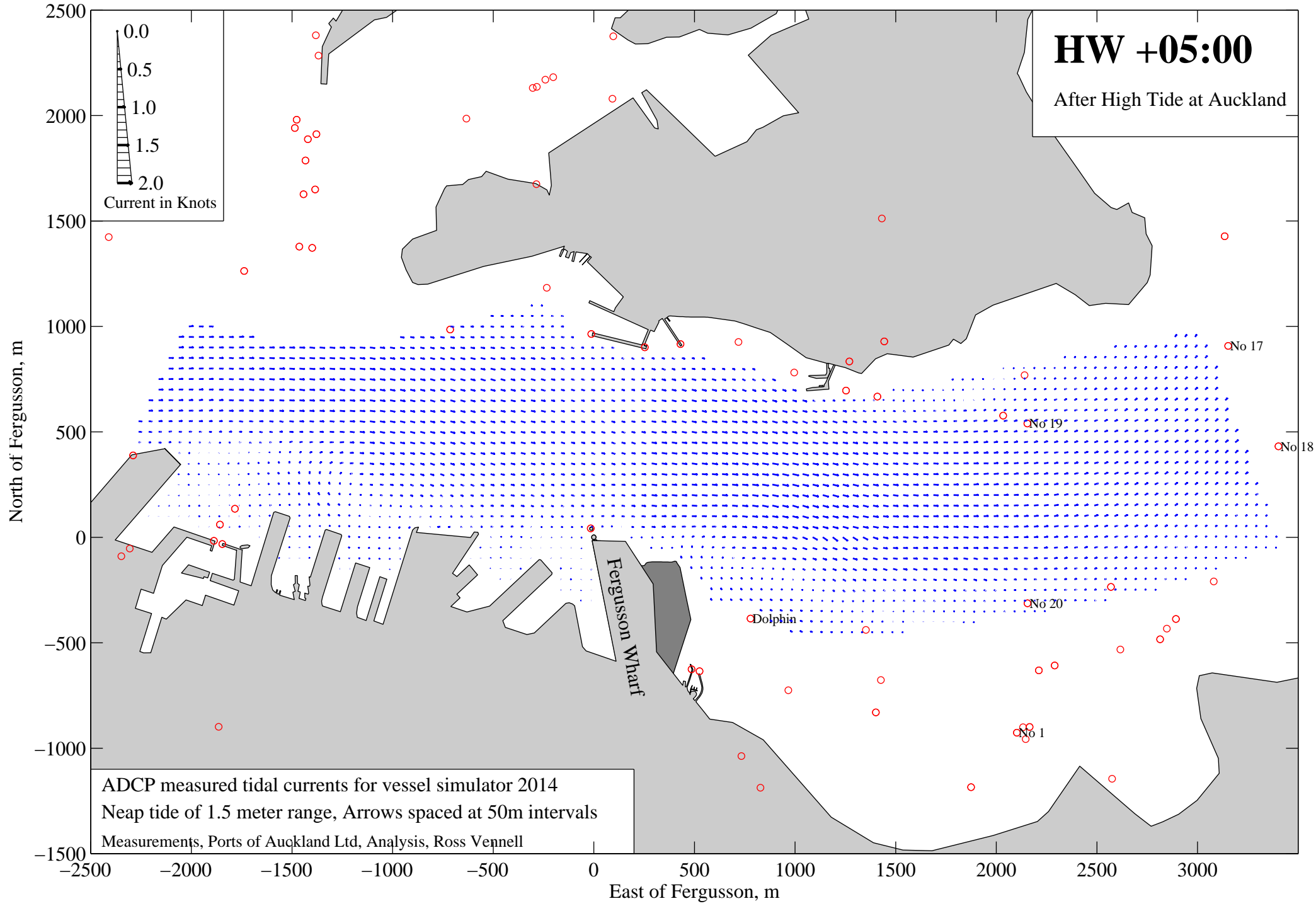












**HW +05:00**  
 After High Tide at Auckland

ADCP measured tidal currents for vessel simulator 2014  
 Neap tide of 1.5 meter range, Arrows spaced at 50m intervals  
 Measurements, Ports of Auckland Ltd, Analysis, Ross Vennell

