

Auckland Transport Quarterly Indicators Report 2018/19

September 2019



1. Executive Summary**2. External Indicators****3. Performance by Key Priority**

3.1 Help people to travel safely

3.2 Improve access to frequent and attractive public transport

3.3 Encourage walking and cycling

3.4 Make the best use of existing transport networks

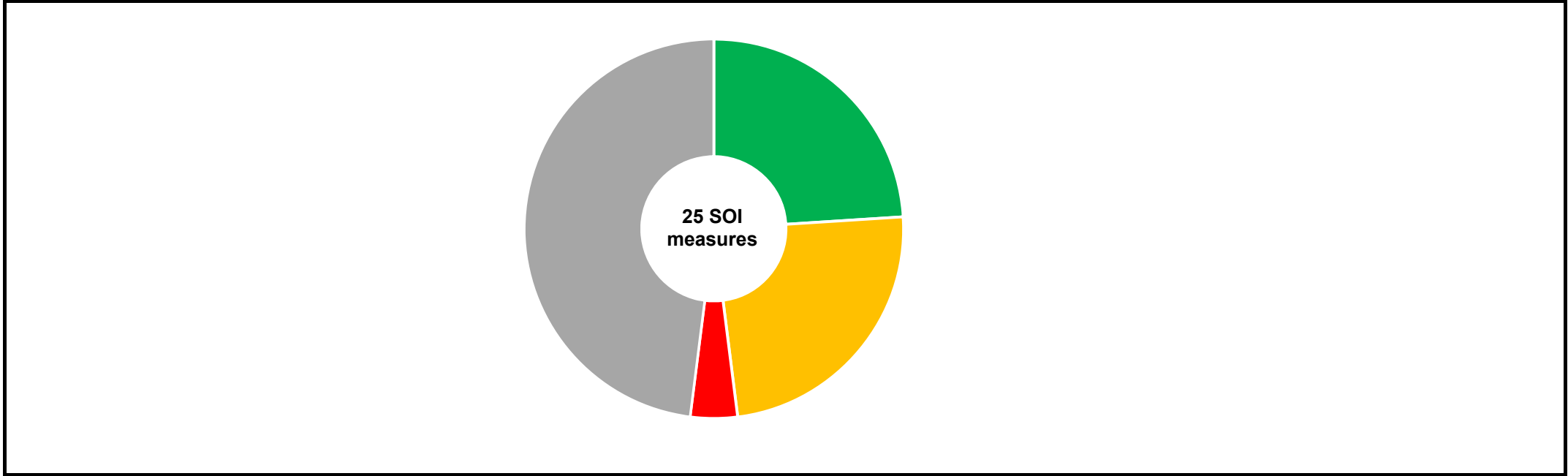
3.5 Manage the impacts of the transport system on the environment

3.6 Value for money

3.7 Local Board engagement

1 Executive summary

SOI performance summary



- On target to exceed performance measure (more than 2.5% above target)
- On target to meet performance measure (within +/- 2.5% of target)
- Not on target to meet performance measure (more than 2.5% below target)

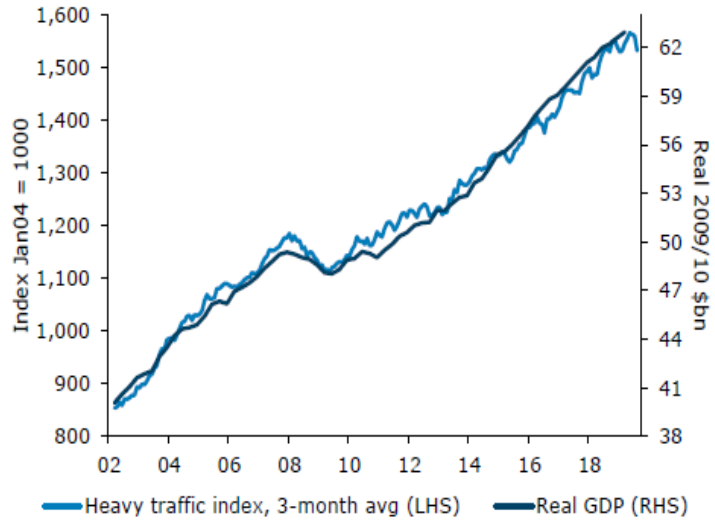
■ Data not available

1. Executive Summary**2. External Indicators****3. Performance by Key Priority**

- 3.1 Help people to travel safely
- 3.2 Improve access to frequent and attractive public transport
- 3.3 Encourage walking and cycling
- 3.4 Make the best use of existing transport networks
- 3.5 Manage the impacts of the transport system on the environment
- 3.6 Value for money
- 3.7 Local Board engagement

2. External indicators

2.1 ANZ Truckometer



The ANZ Truckometer uses NZ Transport Agency traffic data as an indicator of national economic activity.

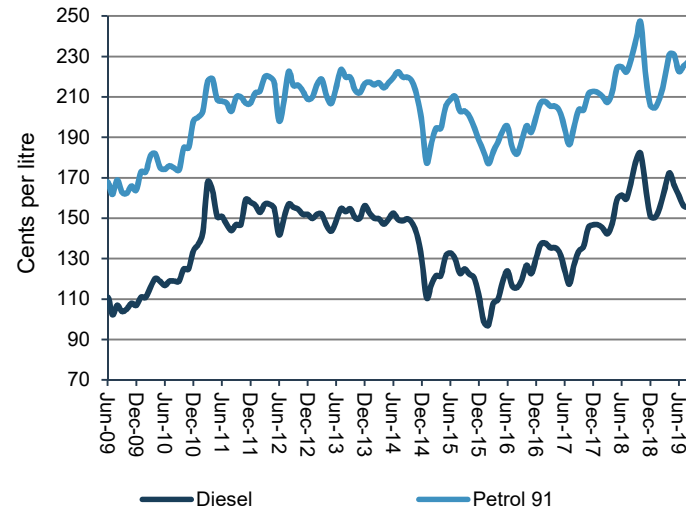
Annual growth in the Heavy Traffic Index has taken a dive in the past two months, to its lowest level since 2013.

The relationship to GDP has not been as close in recent years but it usually picks the trends fairly well, making the drop somewhat alarming.

However, it is likely that the Heavy Traffic Index is more exposed to logging activity (which slowed quite sharply due to a price correction) than the broader economy.

Source: ANZ Truckometer

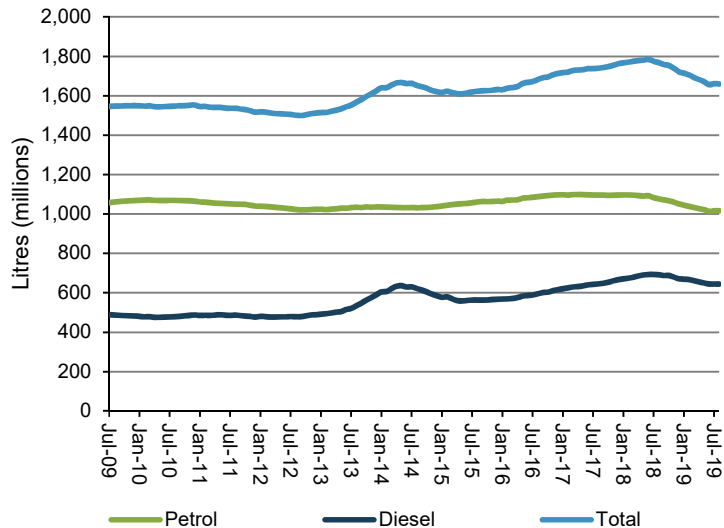
2.2 Monthly fuel prices



In September 2019 petrol prices were 2.6% lower and diesel prices were 9.9% lower compared to September 2018.

Source: Ministry of Business, Employment and Innovation

2.3 Auckland fuel sales (12 month rolling totals)

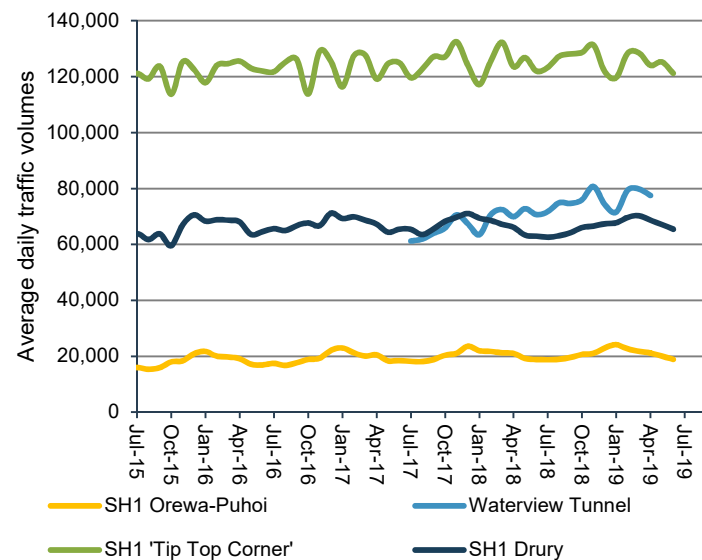


Total fuel sales for the 12 months to August 2019 were 6.1% lower than the 12 months to August 2018.

Petrol sales for the 12 months to August 2019 were 5.6% lower and diesel sales 6.9% lower than the 12 months to August 2018.

Source: Auckland Council fuel tax returns

2.4 State Highway average daily traffic volumes



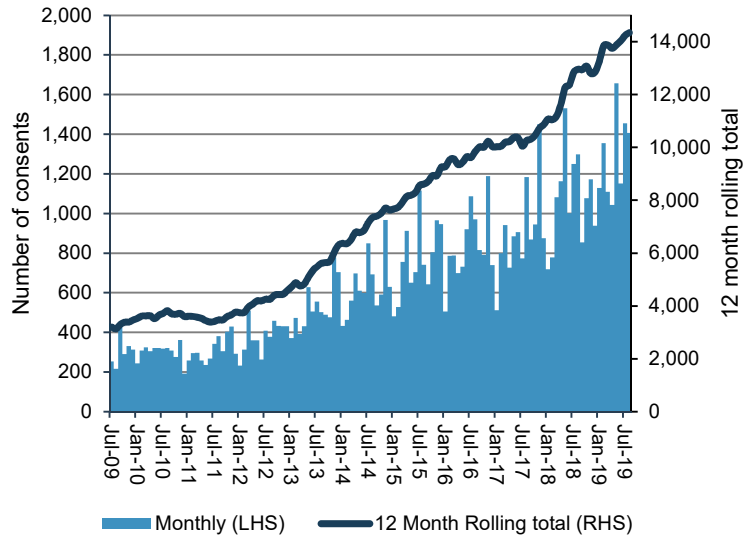
Compared to June 2018, average daily traffic volumes in June 2019 were down 1% on SH1 at Tip Top Corner, up 4% on SH1 at Drury, and unchanged on SH1 between Orewa and Puhoi.

Traffic volumes at Waterview Tunnel will be updated when more data is available.

Source: NZ Transport Agency Data

2. External indicators

2.5 Auckland dwelling consents issued

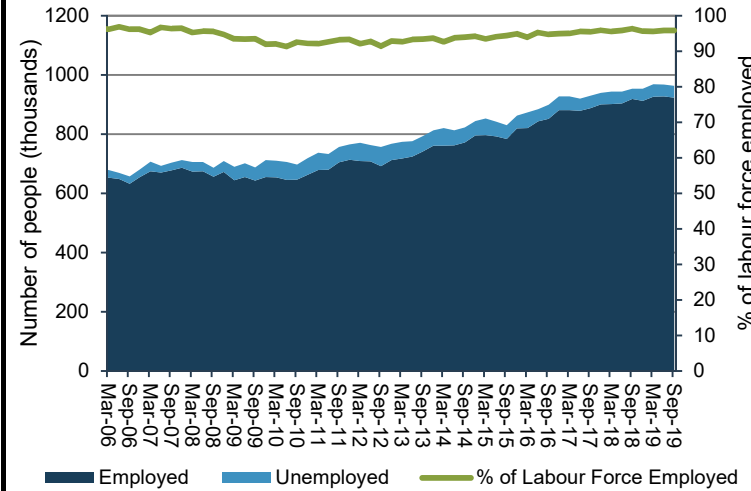


1,407 consents were issued in August 2019, an increase of 8.4% on August 2018.

The 12 month rolling total to August 2019 was 14,345, 10.7% higher than the 12 months to August 2018.

Source: Statistics NZ

2.6 Auckland labour force



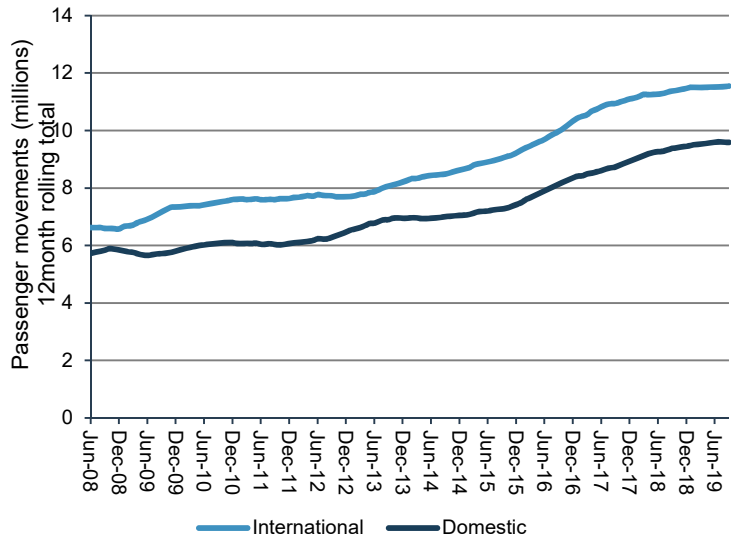
Auckland employment in the September 2019 quarter totalled 922,900, up 0.5% on September 2018.

This represents 95.9% of the labour force in employment.

These figures reflect a revision of data from the Household labour force survey to account for latest population estimates.

Source: Statistics NZ Quarterly Labour Force Survey

2.7 Auckland Airport passenger movements

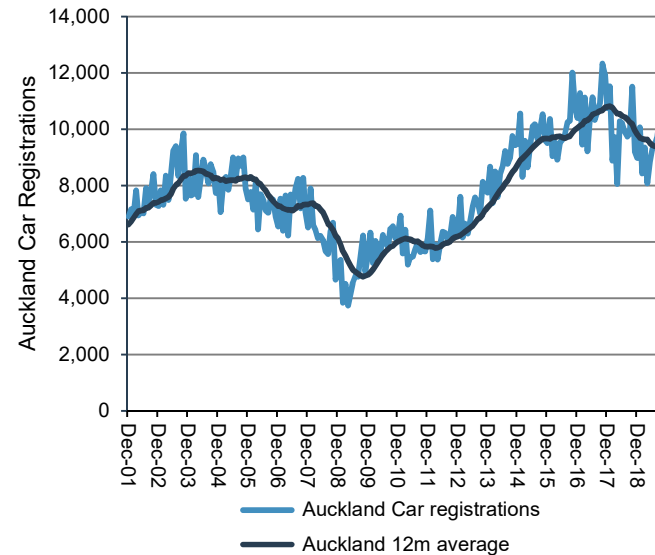


A total of 21.1 million passenger movements were recorded through Auckland Airport in the 12 months to September 2019, an increase of 1.8% on the year to September 2018.

In the month of September 2019, international passenger numbers were up 2.1% but domestic passengers were down 0.7% compared to September 2018.

Source: AIAL monthly traffic report

2.8 Auckland car registrations



This graph shows the number of cars first registered to an Auckland postal code.

There were 10,451 Auckland car registrations in September 2019, 6.4% more than September 2018.

The 12 month rolling average in September 2019 was 9,445, 8.0% lower than in September 2018. Car registrations outside of Auckland reduced by 8.2% in the same time period.

Source: NZ Transport Agency Vehicle registration Centre

1. Executive Summary

2. External Indicators

3. Performance by Key Priority

3.1 Help people to travel safely

3.2 Improve access to frequent and attractive public transport

3.3 Encourage walking and cycling

3.4 Make the best use of existing transport networks

3.5 Manage the impacts of the transport system on the environment

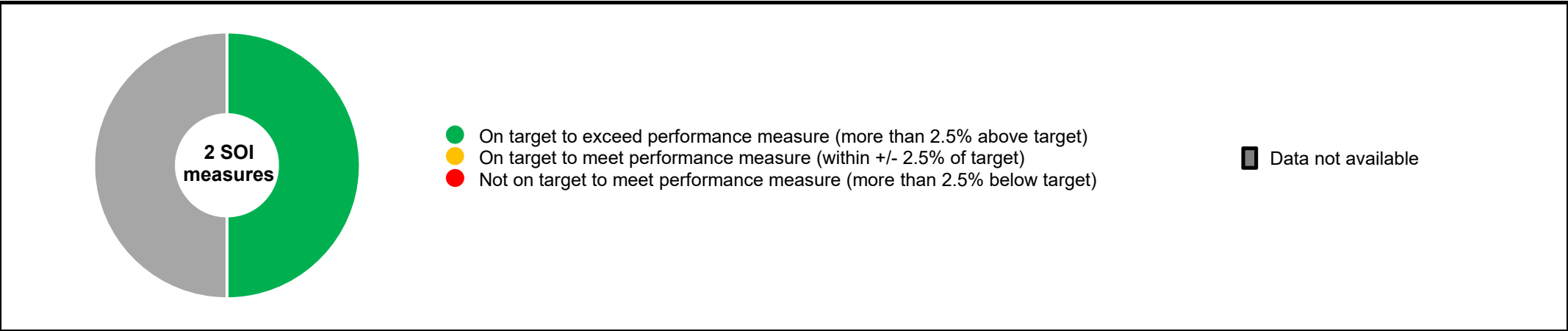
3.6 Value for money

3.7 Local Board engagement

3.1 Help people to travel safely

| Key priority | Measure | SOI 2019/20 Year End Target | Quarter 1 | Quarter 2 | Quarter 3 | Quarter 4 | Measure Commentary |
|------------------------------|---|--|-----------|-----------|-----------|-----------|---|
| Help people to travel safely | Number of high risk intersections and sections of road addressed by Auckland Transport's safety programme | 10 | | | | | 2018/19 total: 11. |
| | Change from the previous year in the number of fatalities and serious injury crashes on the local road network, expressed as a number | Reduce by at least 18 2019 year-end target: 663 | ● | | | | The 12 month total to June 2019 is 528. |

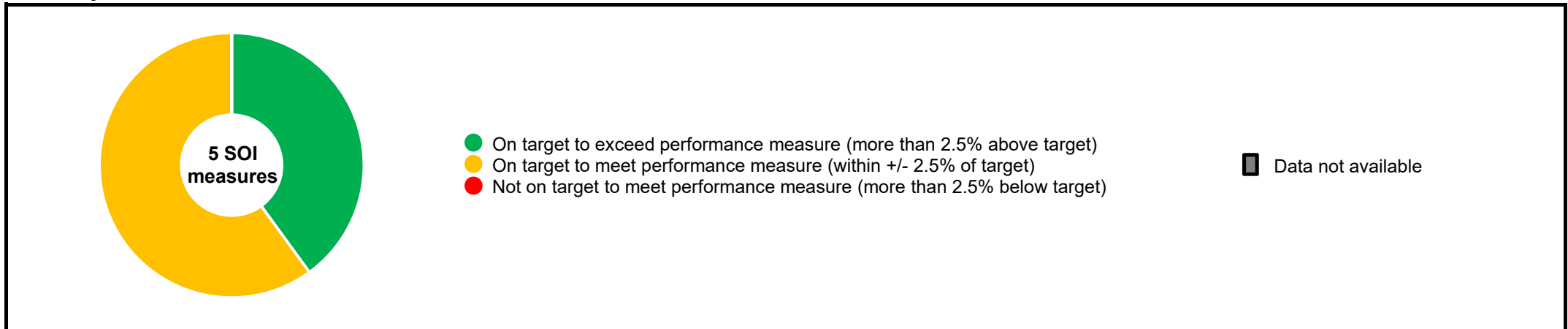
Summary



3.2 Improve access to frequent and attractive public transport

| Key priority | Measure | SOI 2019/20 Year End Target | Quarter 1 | Quarter 2 | Quarter 3 | Quarter 4 | Measure Commentary |
|--|---|--|-----------|-----------|-----------|-----------|--|
| Improve access to frequent and attractive public transport | Total public transport boardings | 103.6 million | ● | | | | 12 month boardings totalled 102,378,443 (3.5% above target). |
| | Total rail boardings | 22.30 million | ● | | | | 12 month rail boardings totalled 21,560,711 (0.2% below target). |
| | Boardings on rapid or frequent network (rail, busway, FTN bus) | Increase at faster rate than total boardings | ● | | | | RTN + FTN boardings grew faster than total boardings, with 18.3% growth on 2018/19. |
| | Percentage of public transport passengers satisfied with their public transport service | 85% | ● | | | | Overall satisfaction with public transport services (91%) is unchanged compared to the result from last quarter (91%). |
| | Public transport punctuality (weighted across all modes) | 95.0% | ● | | | | YTD average: 97.3%. |

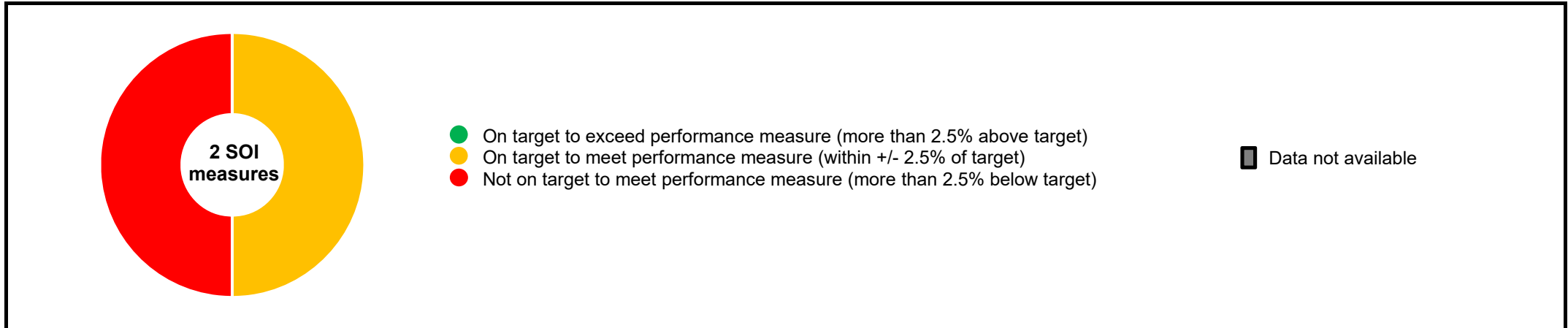
Summary



3.3 Encourage walking and cycling

| Key priority | Measure | SOI 2019/20 Year End Target | Quarter 1 | Quarter 2 | Quarter 3 | Quarter 4 | Measure Commentary |
|-------------------------------|--|-----------------------------|-----------|-----------|-----------|-----------|---------------------|
| Encourage walking and cycling | Kilometres of new cycleway added to the regional cycle network | 10 km | ● | | | | YTD total: 2.2 km. |
| | Number of cycle movements past selected count sites | 3.826 million | ● | | | | YTD total: 767,703. |

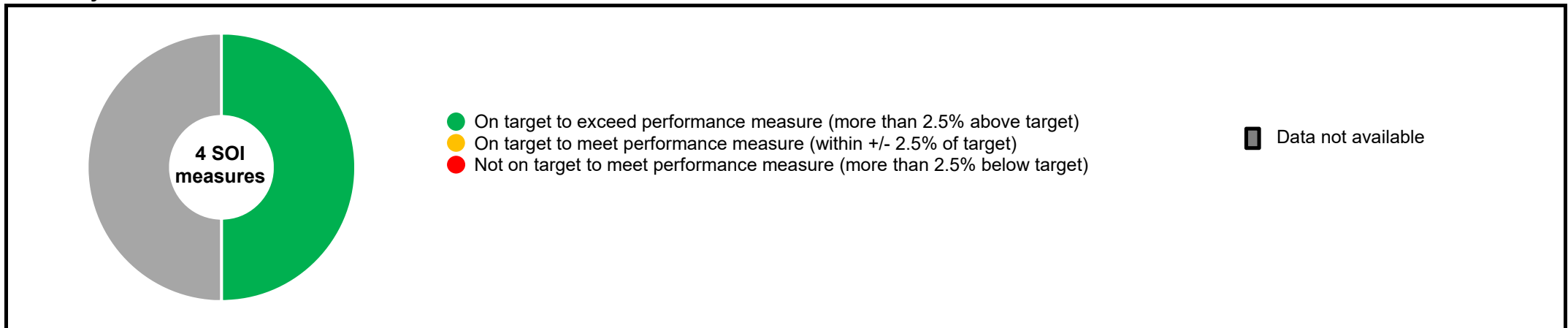
Summary



3.4 Make the best use of existing transport networks

| Key priority | Measure | SOI 2019/20 Year End Target | Quarter 1 | Quarter 2 | Quarter 3 | Quarter 4 | Measure Commentary |
|--|--|-----------------------------|-----------|-----------|-----------|-----------|---|
| Make the best use of existing transport networks | Average AM peak arterial productivity | 27,500 | ● | | | | The 12 month rolling average to September 2019 is 32,928. |
| | Proportion of the freight network operating at Level of Service C or better during the inter-peak | 85% | ● | | | | The 12 month rolling average to September 2019 is 93%. |
| | Active and sustainable transport mode share at schools where the Travelwise programme is implemented | 40% | | | | | 2019 survey result: 41%. |
| | Active and sustainable transport mode share for morning peak commuters where the Travelwise Choices programme is implemented | 40% | | | | | 2019 survey result: 35%. |

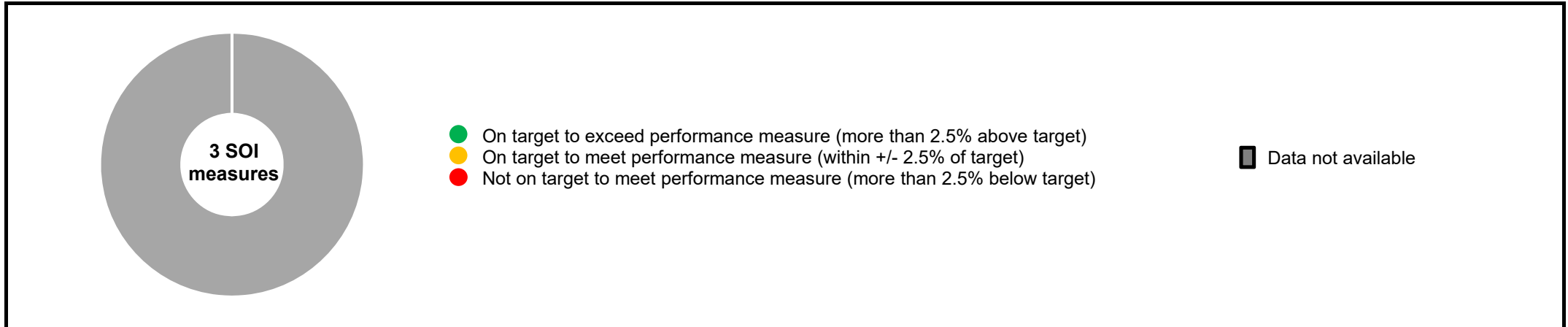
Summary



3.5 Manage the impacts of the transport network on the environment

| Key priority | Measure | SOI 2019/20 Year End Target | Quarter 1 | Quarter 2 | Quarter 3 | Quarter 4 | Measure Commentary |
|--|--|-----------------------------|-----------|-----------|-----------|-----------|--------------------|
| Manage the impacts of the transport network on the environment | Number of buses in the Auckland bus fleet classified as low emission | 5 | | | | | New measure. |
| | Reduction in CO ₂ e (emissions) generated annually by Auckland Transport corporate operations (from 2017/18 baseline) | 7% | | | | | New measure. |
| | Percentage of Auckland Transport streetlights that are energy efficient LED | 56% | | | | | New measure. |

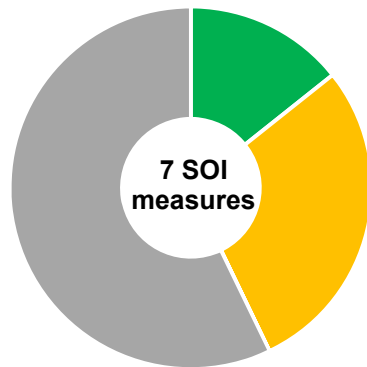
Summary



3.6 Value for money

| Key Priority | Measure | SOI 2019/20 Year End Target | Quarter 1 | Quarter 2 | Quarter 3 | Quarter 4 | Measure Commentary |
|-----------------|---|-----------------------------|-----------|-----------|-----------|-----------|--|
| Value for money | Public transport farebox recovery | 43% - 46% | ● | | | | Total public transport farebox recovery to September 2019 was 43.1%. |
| | Proportion of road assets in acceptable condition (as defined by Auckland Transport's AMP) | 95% | | | | | The 2019/20 result was 94%. |
| | Proportion of footpaths in acceptable condition (as defined by Auckland Transport's AMP) | 95% | | | | | The 2019/20 result was 96%. |
| | Road maintenance standards (ride quality) as measured by smooth travel exposure (STE) for all urban roads | 81% | | | | | The 2019/20 result for urban roads was 87%. |
| | Road maintenance standards (ride quality) as measured by smooth travel exposure (STE) for all rural roads | 92% | | | | | The 2019/20 result for rural roads was 94%. |
| | Percentage of the sealed local road network that is resurfaced | 5.8% | ● | | | | YTD total: 27.6 km (0.4%). |
| | Percentage of customer service requests relating to roads and footpaths which receive a response within specified time frames | 85% | ● | | | | YTD average: 84.0%. |

Summary



- On target to exceed performance measure (more than 2.5% above target)
- On target to meet performance measure (within +/- 2.5% of target)
- Not on target to meet performance measure (more than 2.5% below target)

■ Data not available

3.7 Local Board engagement

| Key priority | Measure | SOI 2019/20 Year End Target | Quarter 1 | Quarter 2 | Quarter 3 | Quarter 4 | Measure Commentary |
|------------------------|--|------------------------------------|-----------|-----------|-----------|-----------|---|
| Local Board engagement | Percentage of Local Board members satisfied with AT engagement | Reporting to Local Board: 70% | | | | | 2019 result: 41%. The next survey results are expected to be available in late 2020. |
| | | Consultation with Local Board: 70% | | | | | 2019 result: 35%. The next survey results are expected to be available in late 2020. |

Summary

