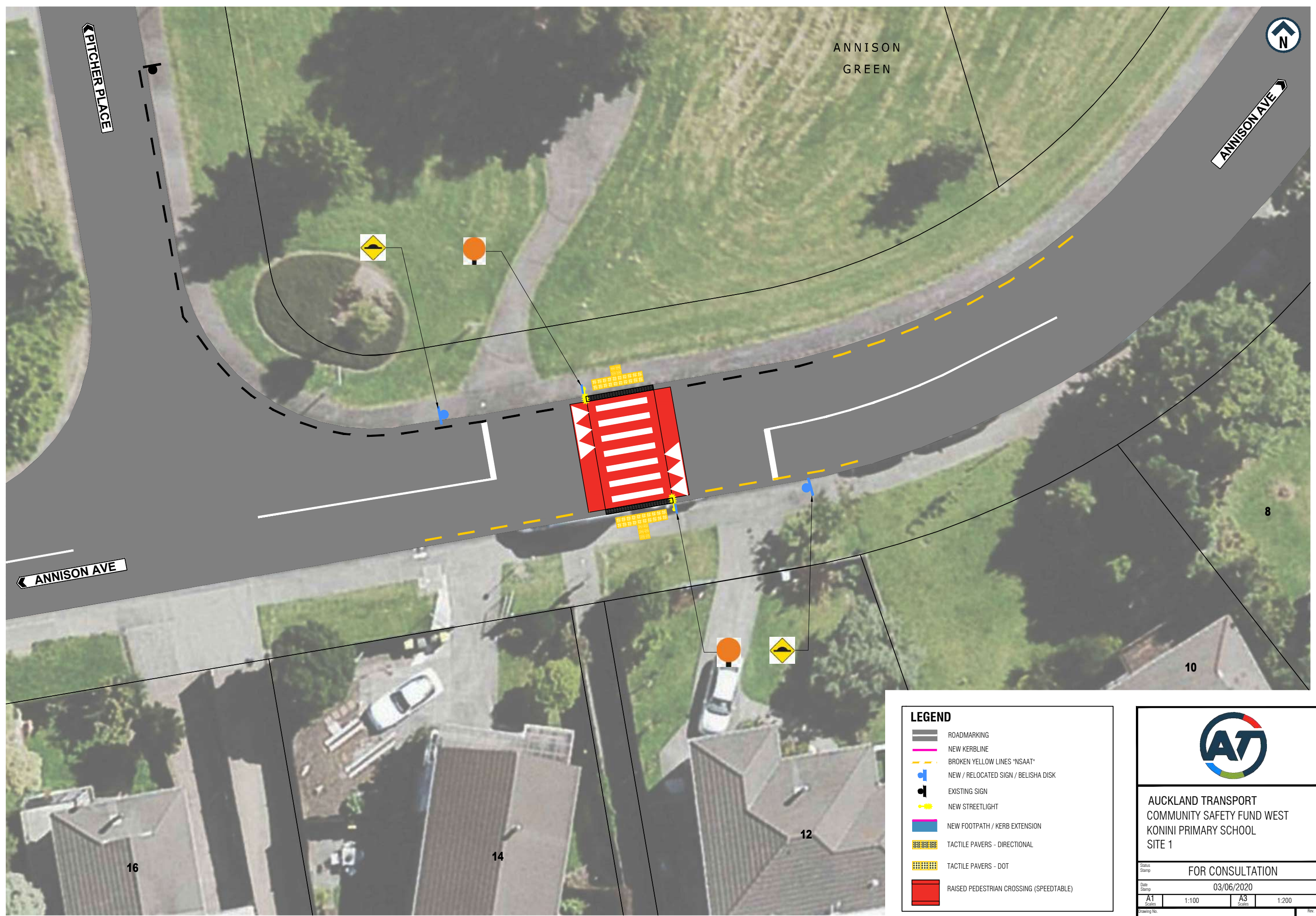



ORIGINAL SIZE A1 200mm DO NOT SCALE - IF IN DOUBT, ASK



LEGEND

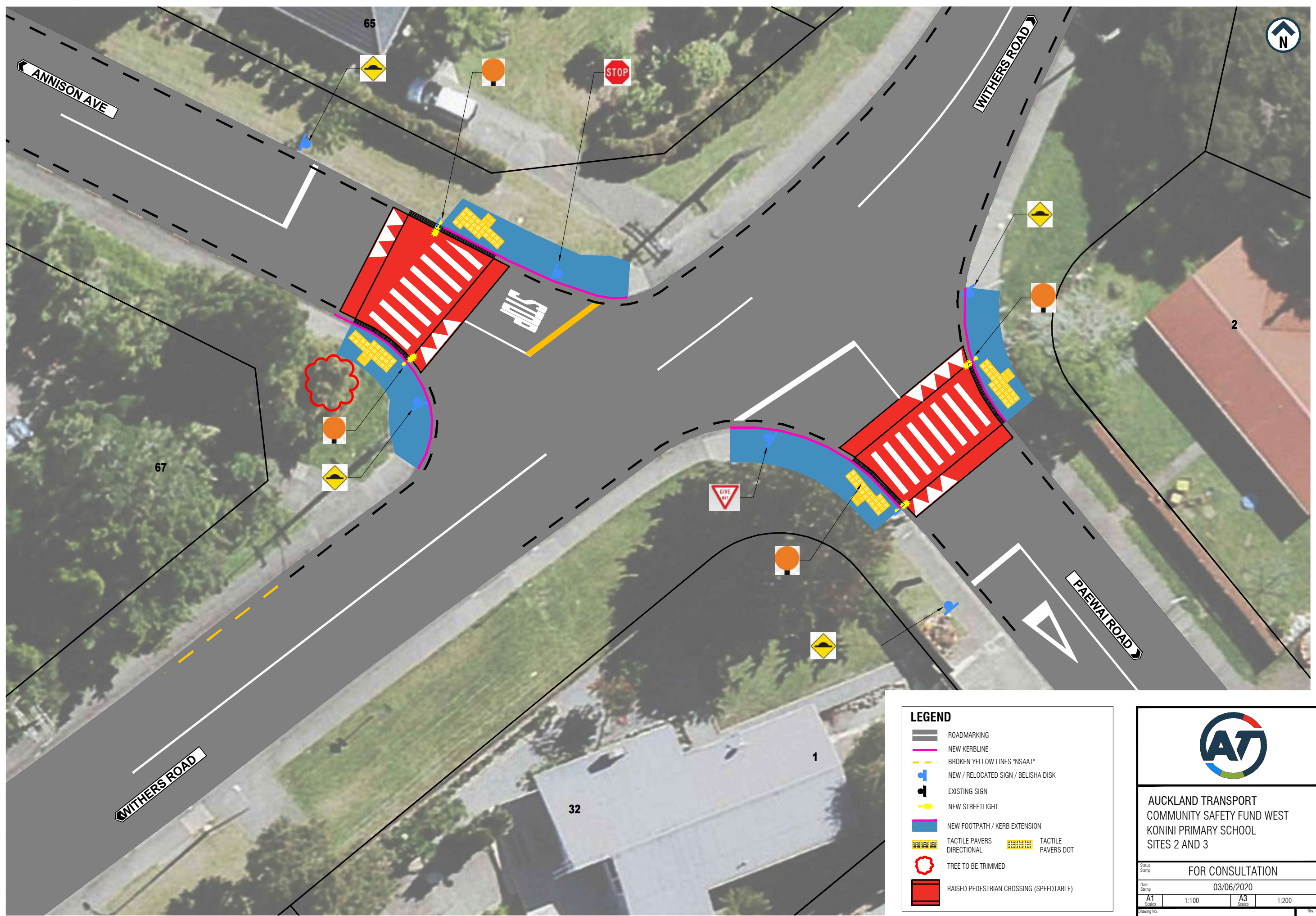
	ROADMARKING
	NEW KERBLINE
	BROKEN YELLOW LINES "NSAAT"
	NEW / RELOCATED SIGN / BELISHA DISK
	EXISTING SIGN
	NEW STREETLIGHT
	NEW FOOTPATH / KERB EXTENSION
	TACTILE PAVERS - DIRECTIONAL
	TACTILE PAVERS - DOT
	RAISED PEDESTRIAN CROSSING (SPEEDTABLE)



AUCKLAND TRANSPORT
 COMMUNITY SAFETY FUND WEST
 KONINI PRIMARY SCHOOL
 SITE 1


Status Stamp		FOR CONSULTATION	
Date Stamp		03/06/2020	
A1 Scale	1:100	A3 Scale	1:200
Drawing No.			Rev.
1040-146784-05-RD504			C

ORIGINAL SIZE A1 200mm DO NOT SCALE - IF IN DOUBT, ASK



LEGEND

	ROADMARKING
	NEW KERBLINE
	BROKEN YELLOW LINES "NSAAT"
	NEW / RELOCATED SIGN / BELISHA DISK
	EXISTING SIGN
	NEW STREETLIGHT
	NEW FOOTPATH / KERB EXTENSION
	TACTILE PAVERS DIRECTIONAL
	TACTILE PAVERS DOT
	TREE TO BE TRIMMED
	RAISED PEDESTRIAN CROSSING (SPEEDTABLE)



AUCKLAND TRANSPORT
 COMMUNITY SAFETY FUND WEST
 KONINI PRIMARY SCHOOL
 SITES 2 AND 3

Status Stamp			
FOR CONSULTATION			
Date Stamp			
03/06/2020			
A1 Scale	1:100	A3 Scale	1:200
Drawing No.			Rev.
1040-146784-05-RD505			C