



Legend

-  Proposed Broken Yellow Lines
-  Proposed No Stopping off Roadway



NOT TO SCALE

Aerial photograph might not reflect recent changes.

Page 1 of 5

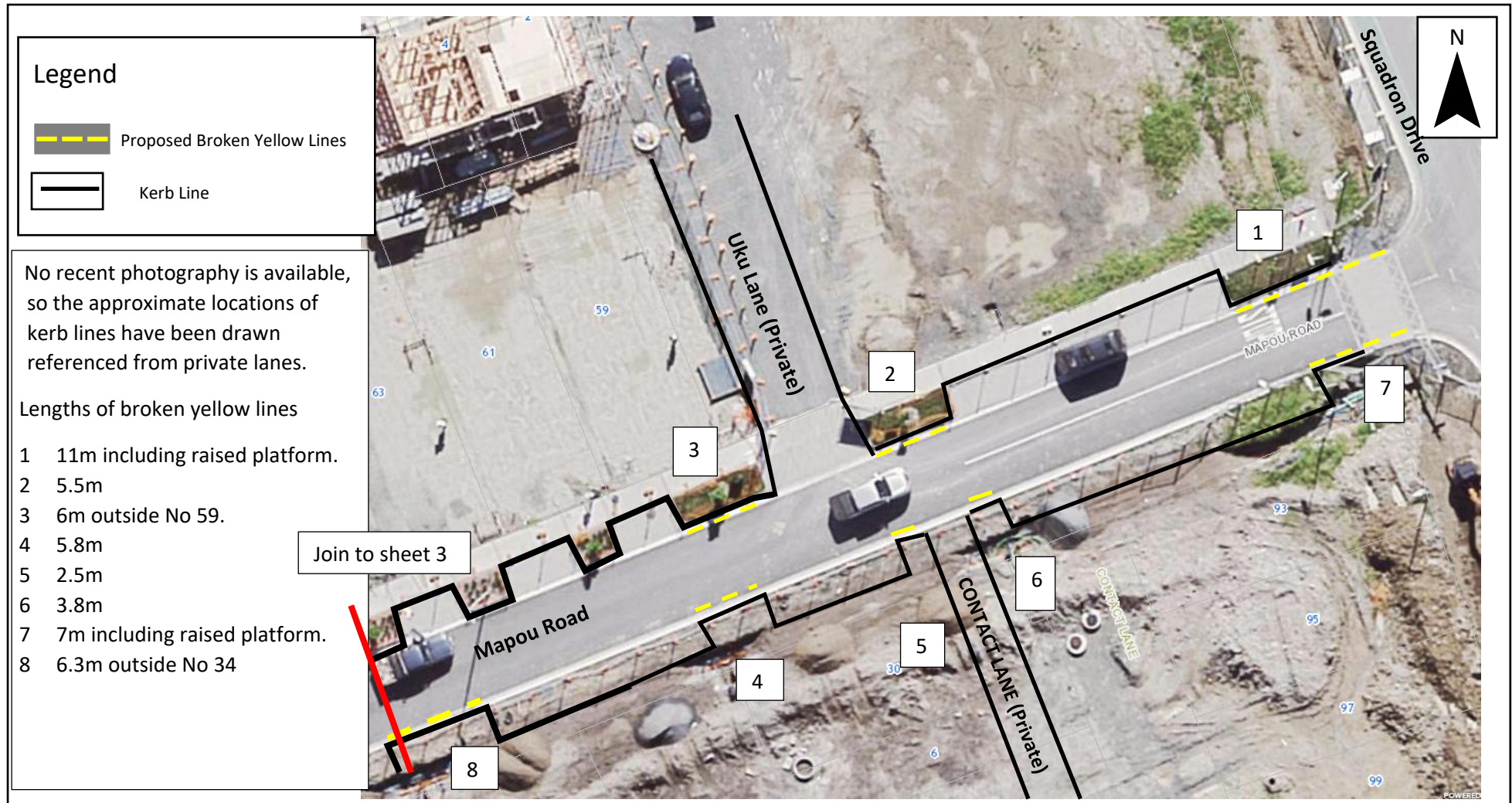
Squadron Drive, Hobsonville

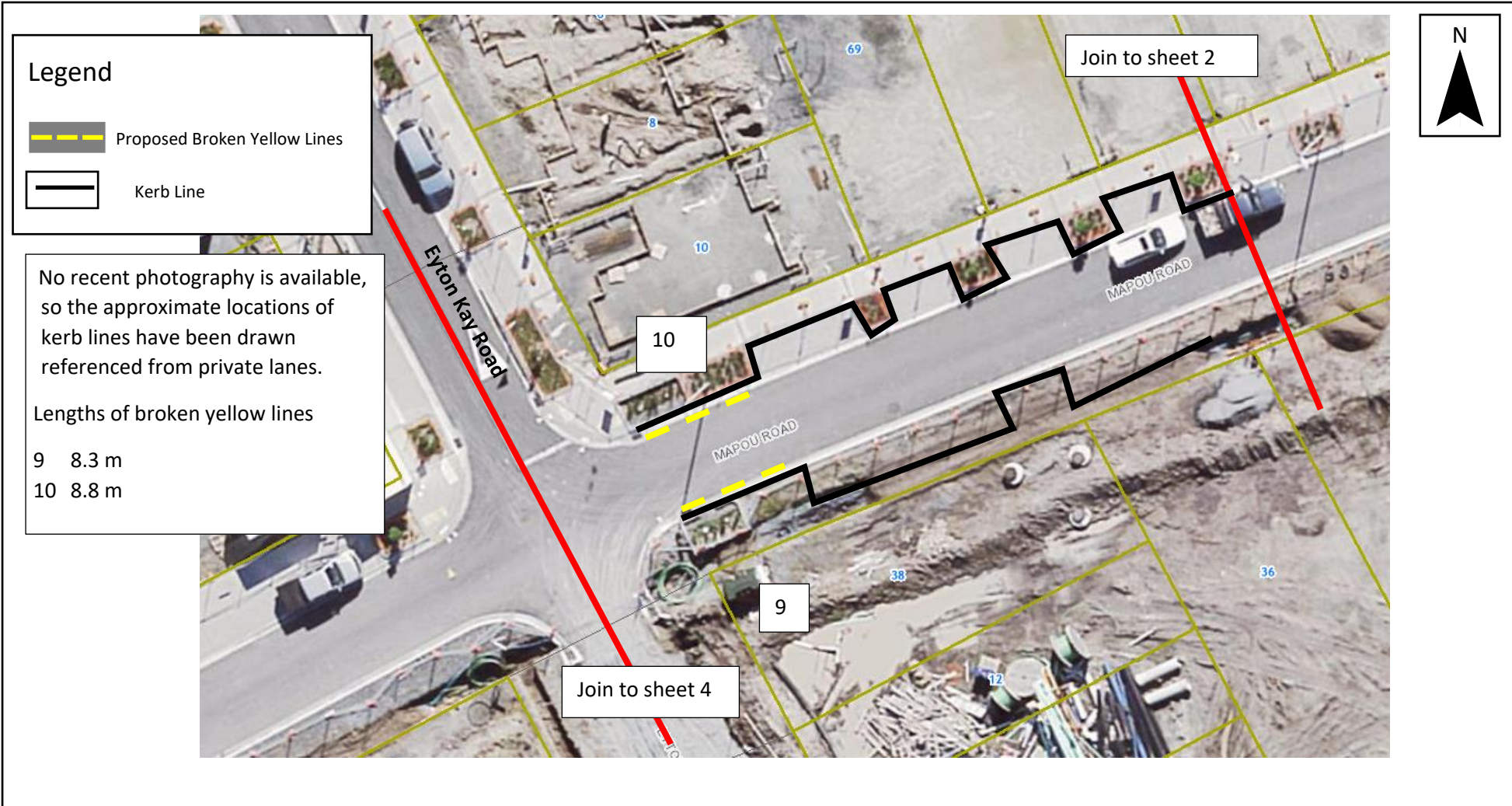
Proposed broken yellow lines and No Stopping off the roadway.

Date: 8/11/21

For Consultation







NOT TO SCALE

Aerial photograph might not reflect recent changes.

Page 3 of 5

Date: 8/11/21


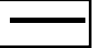
Mapou Road, Hobsonville Point

Proposed broken yellow lines

For Consultation



Legend

-  Proposed Broken Yellow Lines
-  Kerb Line

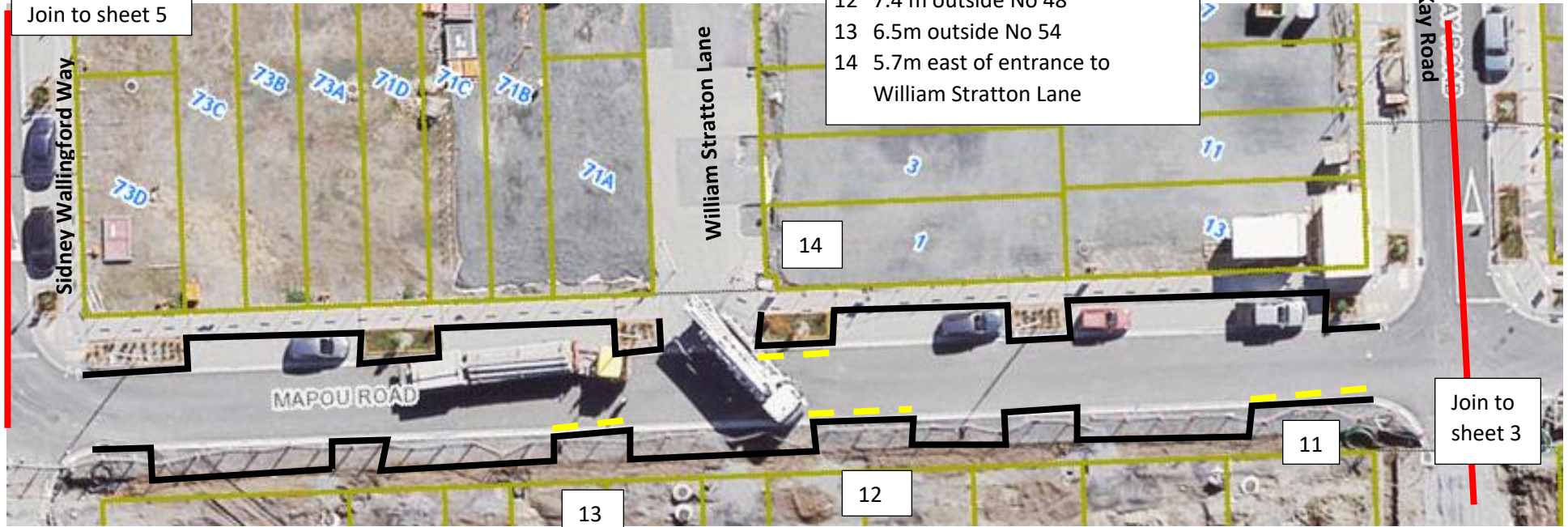
No recent photography is available, so the approximate locations of kerb lines have been drawn referenced from private lanes.

Lengths of broken yellow lines

- 11 7.1 m
- 12 7.4 m outside No 48
- 13 6.5m outside No 54
- 14 5.7m east of entrance to William Stratton Lane



Join to sheet 5



Join to sheet 3

NOT TO SCALE

Aerial photograph might not reflect recent changes.

Page 4 of 5

Date: 8/11/21


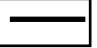
Mapou Road, Hobsonville Point

Proposed broken yellow lines

For Consultation



Legend

-  Proposed Broken Yellow Lines
-  Kerb Line

No recent photography is available, so the approximate locations of kerb lines have been drawn referenced from private lanes.

Lengths of broken yellow lines
15 6.2m



Join to sheet 4



NOT TO SCALE

Aerial photograph might not reflect recent changes.

Page 5 of 5

Date: 8/11/21

Mapou Road, Hobsonville Point

Proposed broken yellow lines

For Consultation

