



LEGEND

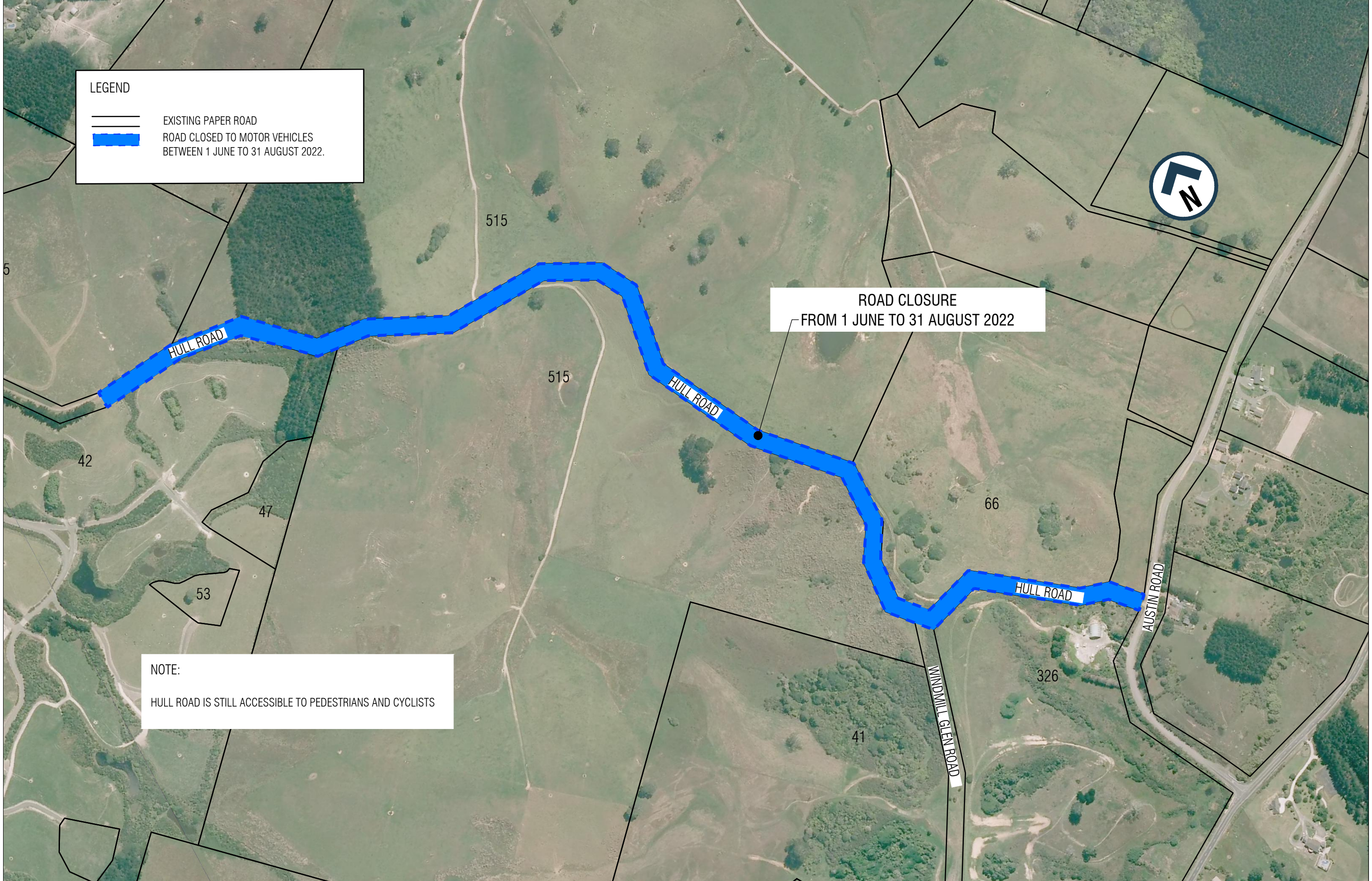
 EXISTING PAPER ROAD

 ROAD CLOSED TO MOTOR VEHICLES BETWEEN 1 JUNE TO 31 AUGUST 2022.



ROAD CLOSURE
FROM 1 JUNE TO 31 AUGUST 2022

NOTE:
HULL ROAD IS STILL ACCESSIBLE TO PEDESTRIANS AND CYCLISTS



REVISION HISTORY			
NO	DESCRIPTION	BY	DATE
A	ROAD CLOSURE	LZ	6/5/2022

HULL ROAD, WAITOKI, RODNEY LOCAL BOARD
ROAD CLOSURE
CONSULTATION PLAN

SURVEYED:
DESIGNED: L. SU'A-CHANG
DRAWN: L. ZHANG
DWG CHECK: L. SU'A-CHANG

DRAWING DATE 6/5/2022
A4 DRAWING SCALE: N.T.S.
DRAWING NO.
AT/RLB/CON/LZ/258A

REV
A
SHEET
1
OF
1