

ORIGINAL SIZE A1  
200mm  
DO NOT SCALE - IF IN DOUBT, ASK



AUCKLAND TRANSPORT  
LOCAL BOARD PROJECTS - OTARA -  
PAPATOETOE ASHTON AVENUE - SAINT  
JOHNS SCHOOL SAFETY UPGRADE  
OVERALL LAYOUT PLAN

Status Stamp: FOR CONSULTATION

Date Stamp: 01/09/2022

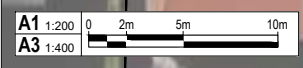
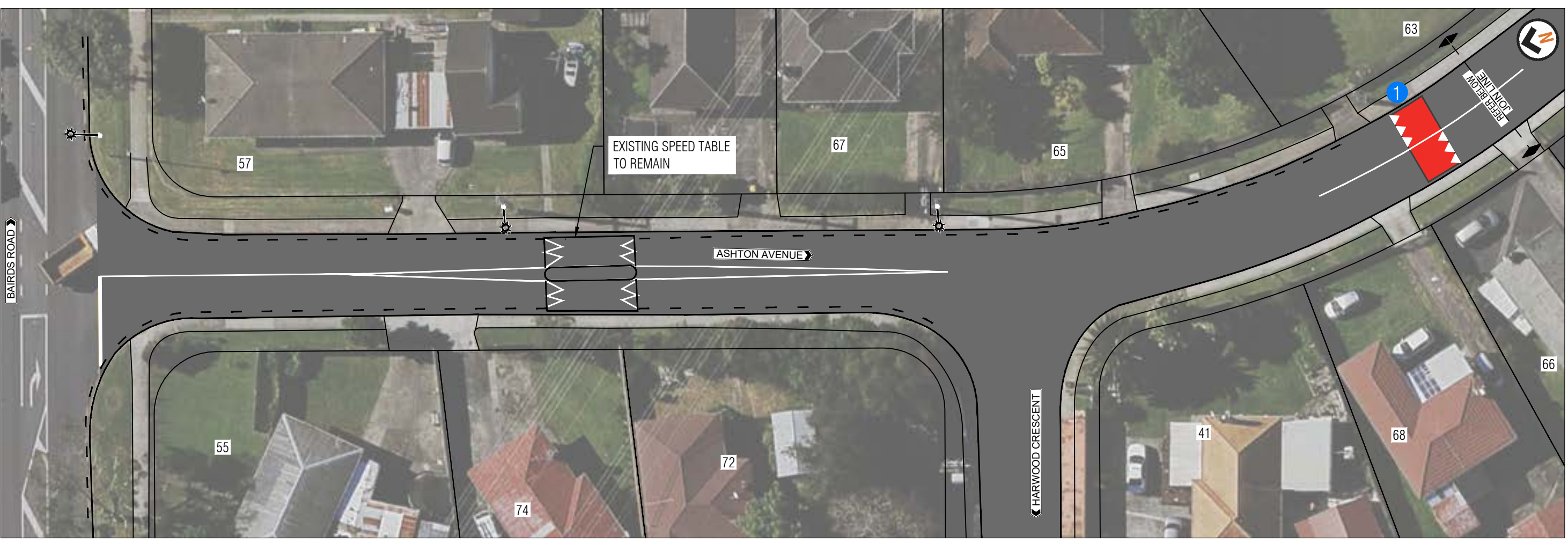
A1 Scale: - A3 Scale: -

Drawing No. 2022-AT-010-03\_G030 Rev. A

ORIGINAL SIZE A1

200mm  
DO NOT SCALE - IF IN DOUBT, ASK

100  
90  
80  
70  
60  
50  
40  
30  
20  
10  
0



**KEY**


① NEW ASPHALT SPEED HUMPS

**LEGEND**

--- EXISTING NO STOPPING LINES

■ NEW ASPHALT SPEED HUMPS

⚡ EXISTING STREET LIGHT



**AUCKLAND TRANSPORT**  
 LOCAL BOARD PROJECTS - OTARA -  
 PAPATOETOE ASHTON AVENUE -  
 SAINT JOHNS SCHOOL SAFETY UPGRADE  
 SHEET 1 OF 3

Status Stamp: FOR CONSULTATION

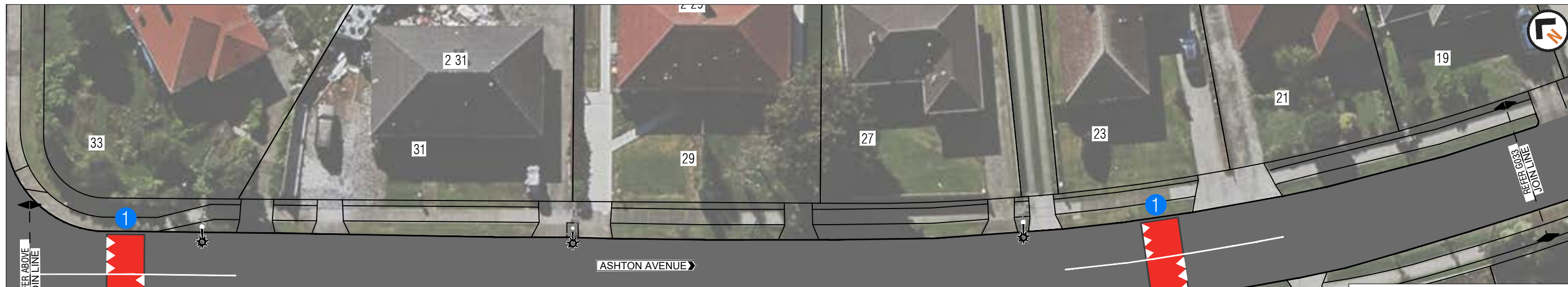
Date Stamp: 01/09/2022

A1	1:200	A3	1:400
----	-------	----	-------

Drawing No. 2022-AT-010-03\_G031

Rev. **A**

ORIGINAL SIZE A1  
200mm  
150  
100  
90  
80  
70  
60  
50  
40  
30  
20  
10  
0



A1 1:200  
A3 1:400  
0 2m 5m 10m

**KEY**

- ① NEW ASPHALT SPEED HUMPS

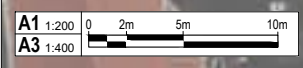
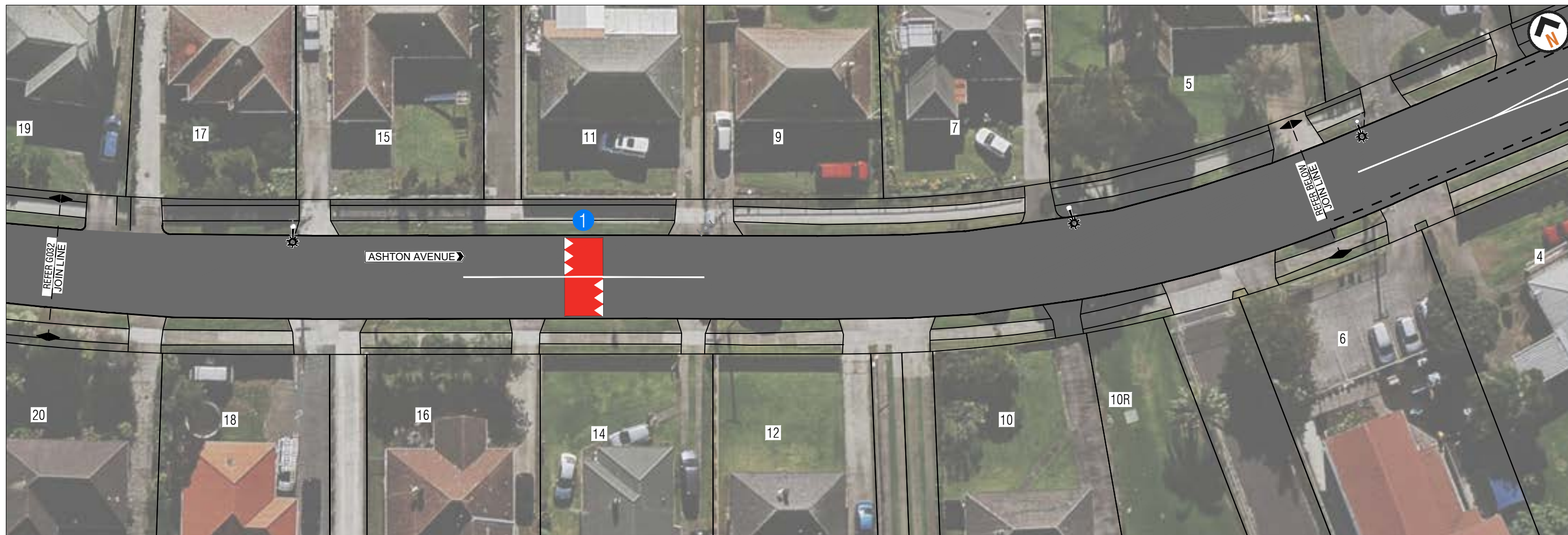
**LEGEND**

- - - EXISTING NO STOPPING LINES
- NEW ASPHALT SPEED HUMPS
- ⚙ EXISTING STREET LIGHT

**AUCKLAND TRANSPORT**  
LOCAL BOARD PROJECTS - OTARA -  
PAPATOETOE ASHTON AVENUE -  
SAINT JOHNS SCHOOL SAFETY UPGRADE  
SHEET 2 OF 3

Status Stamp	FOR CONSULTATION			
Date Stamp	01/09/2022			
A1 Scale	1:200	A3 Scale	1:400	
Drawing No.	2022-AT-010-03_G032		Rev.	A

ORIGINAL SIZE A1  
DO NOT SCALE - IF IN DOUBT, ASK  
200mm  
150  
100  
90  
80  
70  
60  
50  
40  
30  
20  
10  
0




**KEY**

① NEW ASPHALT SPEED HUMPS

**LEGEND**

- - - EXISTING NO STOPPING LINES
- NEW ASPHALT SPEED HUMPS
- ⊙ EXISTING STREET LIGHT



AUCKLAND TRANSPORT  
LOCAL BOARD PROJECTS - OTARA -  
PAPATOETOE ASHTON AVENUE -  
SAINT JOHNS SCHOOL SAFETY UPGRADE  
SHEET 3 OF 3

Status Stamp	FOR CONSULTATION			
Date Stamp	01/09/2022			
A1 Scale	1:200	A3 Scale	1:400	
Drawing No.	2022-AT-010-03_G033		Rev.	A

**BAIRDS  
MAINFREIGHT  
PRIMARY SCHOOL**

NEW NO STOPPING AT ALL TIMES  
LOSS OF 3 PARKING SPACES

REDUNDANT VEHICLE  
CROSSING TO BE REMOVED

RETAIN SCHOOL PATROL

EDWARD AVENUE

NEW NO STOPPING AT ALL TIMES  
LOSS OF 2 PARKING SPACES

NEW RAISED PEDESTRIAN  
CROSSING

RETAIN SCHOOL PATROL

NEW NO STOPPING AT ALL TIMES  
LOSS OF 5 PARKING SPACES

- LEGEND**
-  NEW NO STOPPING LINES
  -  NEW KERBLINE
  -  NEW GRASS
  -  NEW FOOTPATH
  -  NEW RAISED CROSSING
  -  NEW HEAVY DUTY SLOT DRAIN
  -  NEW TACTILE PAVERS



**AUCKLAND TRANSPORT**  
LOCAL BOARD PROJECTS - OTARA -  
PAPATOETOE RAISED PEDESTRIAN CROSSING  
OUTSIDE BAIRDS MAINFREIGHT PRIMARY  
SCHOOL

Status Stamp	FOR CONSULTATION		
Date Stamp	29/07/2022		
A1 Scale	1:200	A3 Scale	1:400
Drawing No.	2022-AT-010_G034		Rev. <b>A</b>

**A1** 1:200  
**A3** 1:400



ORIGINAL SIZE **A1**

DO NOT SCALE - IF IN DOUBT, ASK

