

(N-HB1) Beach Road



This site has been specified as suitable for election signs within the road reserve on the southern side of Beach Road, west of Knights Road. The yellow zone is a general indication where the signs can be placed, subject to the controls of the Auckland Transport Election Signs Bylaw 2013. A copy of the bylaw can be found at <https://at.govt.nz/about-us/bylaws/election-signs-bylaw>.

Condition:

- Signs must be placed at least 2m from the kerb face.

(N-HB2) Carlisle Road



This site has been specified as suitable for election signs within the road reserve on the southern side of Carlisle Road, east of Firth Road, Browns Bay. The yellow zone is a general indication where the signs can be placed, subject to the controls of the Auckland Transport Election Signs Bylaw 2013. A copy of the bylaw can be found at <https://at.govt.nz/about-us/bylaws/election-signs-bylaw>.

Condition:

- Signs must be placed at least 1m from the rear edge of the footpath towards the property boundary.

(N-HB3) East Coast Road (1 of 2)



This site has been specified as suitable for election signs within the road reserve on the eastern side of East Coast Road, north-west of Kowhai Road, opposite 354 – 358 East Coast Road. The yellow zone is a general indication where the signs can be placed, subject to the controls of the Auckland Transport Election Signs Bylaw 2013. A copy of the bylaw can be found at <https://at.govt.nz/about-us/bylaws/election-signs-bylaw/>.

Conditions:

- This site has been identified as a V-Shaped sign site.

(N-HB4) East Coast Road (2 of 2)



This site has been specified as suitable for election signs on the north-eastern side of East Coast Road, opposite number 706 East Coast Road, Pinehill within the road reserve. The yellow zone is a general indication where the signs can be placed, subject to the controls of the Auckland Transport Election Signs Bylaw 2013. A copy of the bylaw can be found at <https://at.govt.nz/about-us/bylaws/election-signs-bylaw>.

Conditions:

- This site has been identified as a V-Shaped sign site.
- Signs must be placed at least 2m from the kerb block.

(N-HB5) Firth Road



This site has been specified as suitable for election signs within the road reserve on the north-eastern side of Firth Road, south of Carlisle Road, Browns Bay. The yellow zone is a general indication where the signs can be placed, subject to the controls of the Auckland Transport Election Signs Bylaw 2013. A copy of the bylaw can be found at <https://at.govt.nz/about-us/bylaws/election-signs-bylaw>.

(N-HB6) Hibiscus Coast Highway (1 of 2)



This site has been specified as suitable for election signs on the western side of Hibiscus Coast Highway within the road reserve alongside the Orewa Bowling Club at 214 Hibiscus Coast Highway, Orewa. The yellow zone is a general indication where the signs can be placed, subject to the controls of the Auckland Transport Election Signs Bylaw 2013. A copy of the bylaw can be found at <https://at.govt.nz/about-us/bylaws/election-signs-bylaw>.

(N-HB7) Hibiscus Coast Highway (2 of 2)

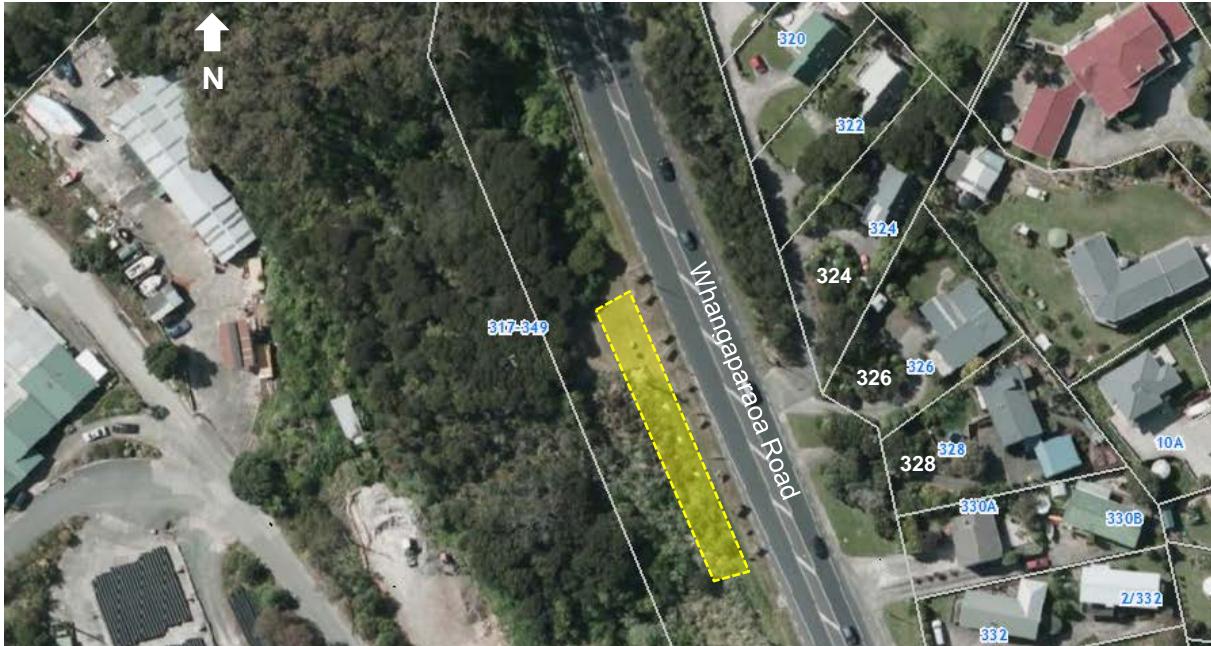


This site has been specified as suitable for election signs on the western side of Hibiscus Coast Highway outside Northern Arena, opposite 57 Hibiscus Coast Highway, Silverdale. The yellow zone is a general indication where the signs can be placed, subject to the controls of the Auckland Transport Election Signs Bylaw 2013. A copy of the bylaw can be found at <https://at.govt.nz/about-us/bylaws/election-signs-bylaw>.

Conditions:

- This site has been identified as a V-Shaped sign site.

(N-HB8) Whangaparaoa Road (1 of 2)



This site has been specified as suitable for election signs on the south-western side of Whangaparaoa Road, opposite numbers 324 to 328 Whangaparaoa Road, Stanmore Bay within the road reserve. The yellow zone is a general indication where the signs can be placed, subject to the controls of the Auckland Transport Election Signs Bylaw 2013. A copy of the bylaw can be found at <https://at.govt.nz/about-us/bylaws/election-signs-bylaw>.

(N-HB9) Whangaparaoa Road (2 of 2)



This site has been specified as suitable for election signs on the northern side of Whangaparaoa Road, opposite Whangaparaoa Library at 713 Whangaparaoa Road, Stanmore Bay within the road reserve. The yellow zone is a general indication where the signs can be placed, subject to the controls of the Auckland Transport Election Signs Bylaw 2013. A copy of the bylaw can be found at <https://at.govt.nz/about-us/bylaws/election-signs-bylaw>.

Conditions:

- This site has been identified as a V-Shaped sign site.