



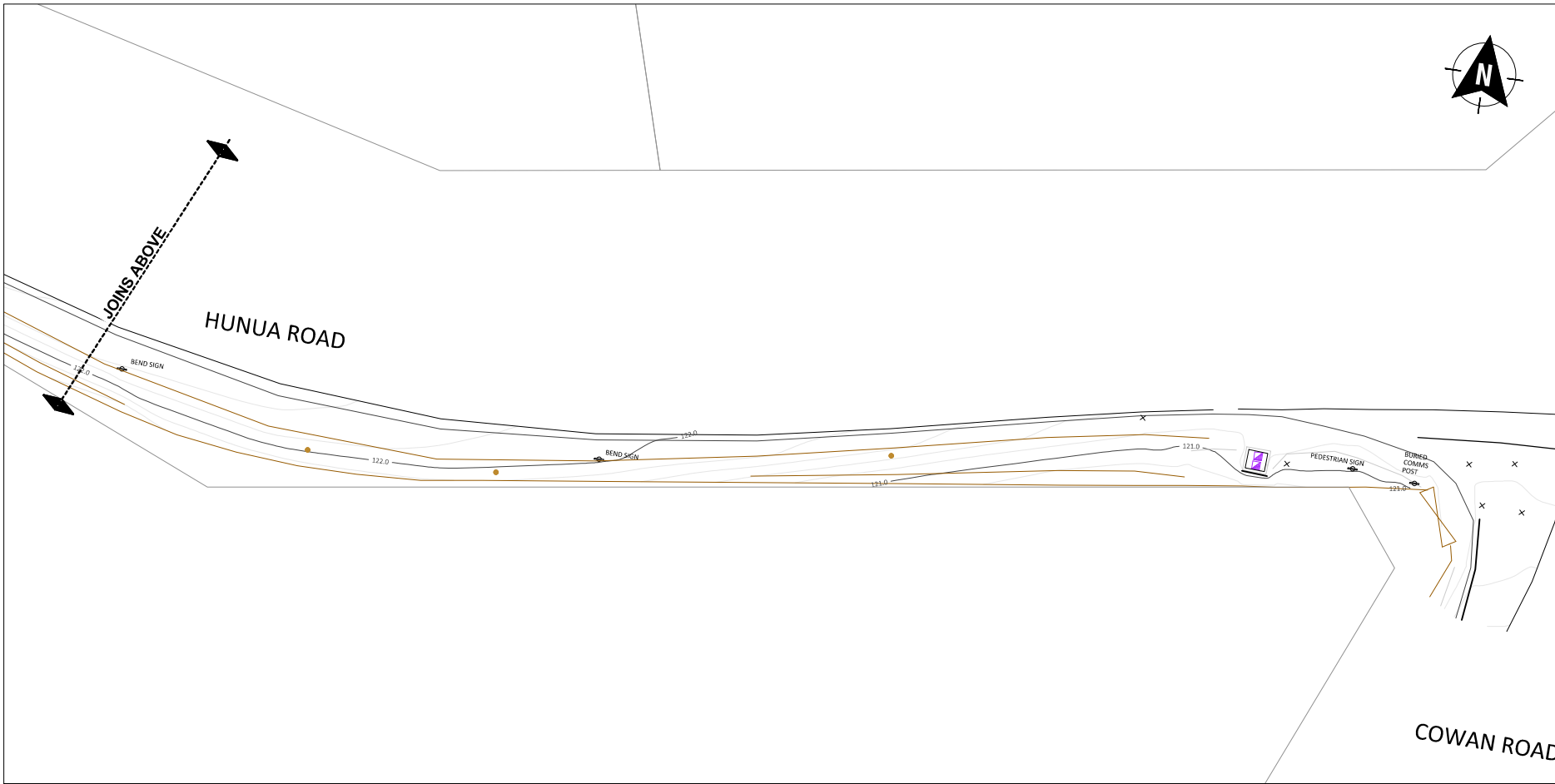
LOCALITY PLAN
NOT TO SCALE



DRAWINGS REGISTER		
SHEET NUMBER	SHEET TITLE	ISSUE
2025-NZA036(002)-050	TOPOGRAPHICAL SURVEY	B
2025-NZA036(002)-100	GENERAL LAYOUT PLAN	B
2025-NZA036(002)-300	EXISTING SERVICES PLAN	B

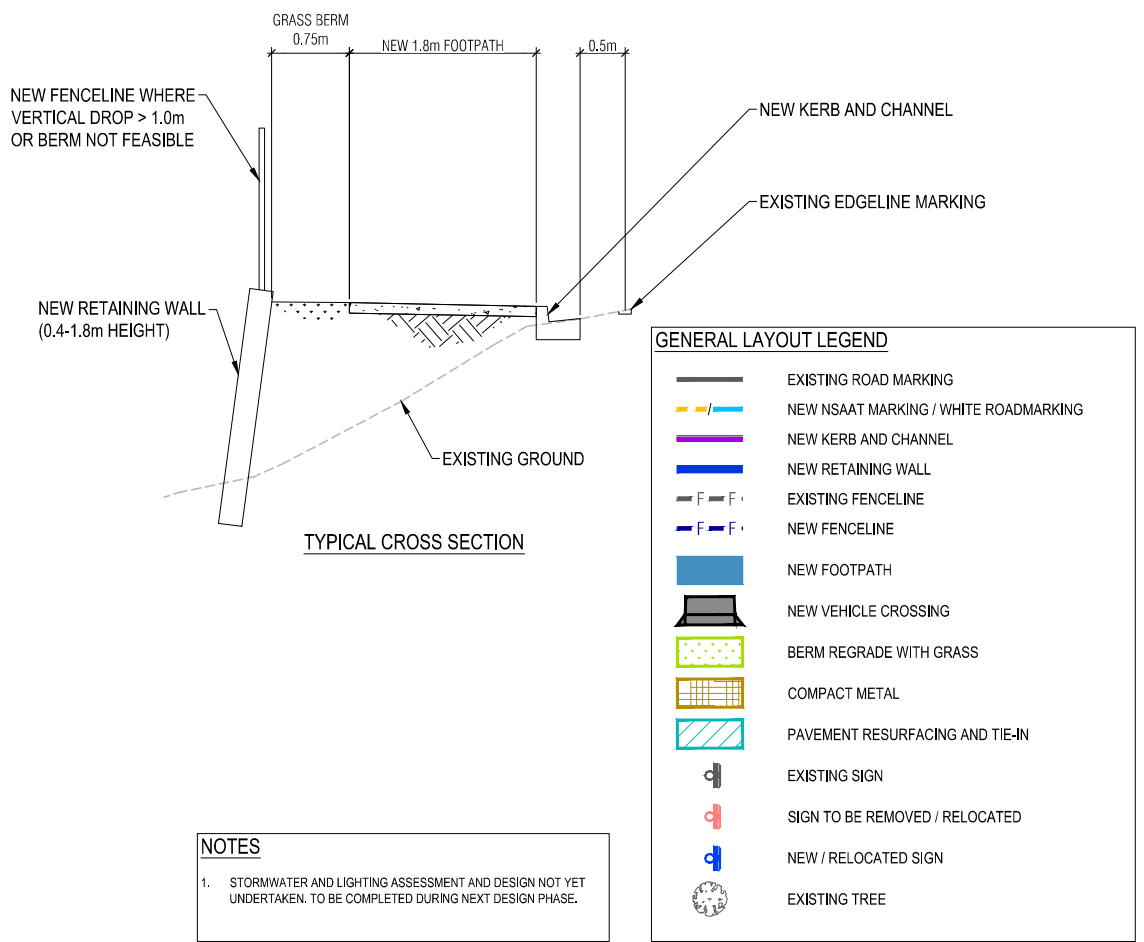
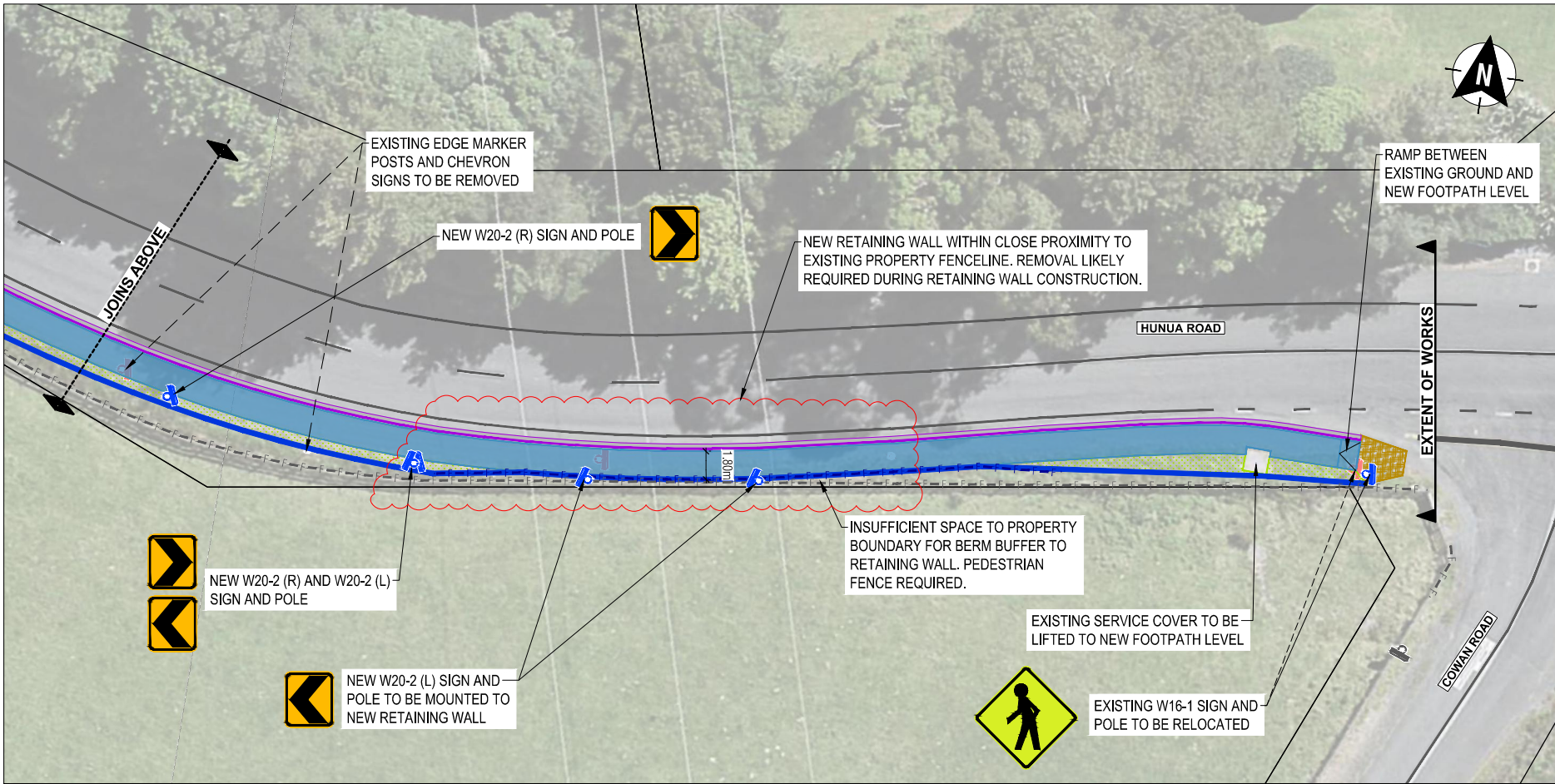
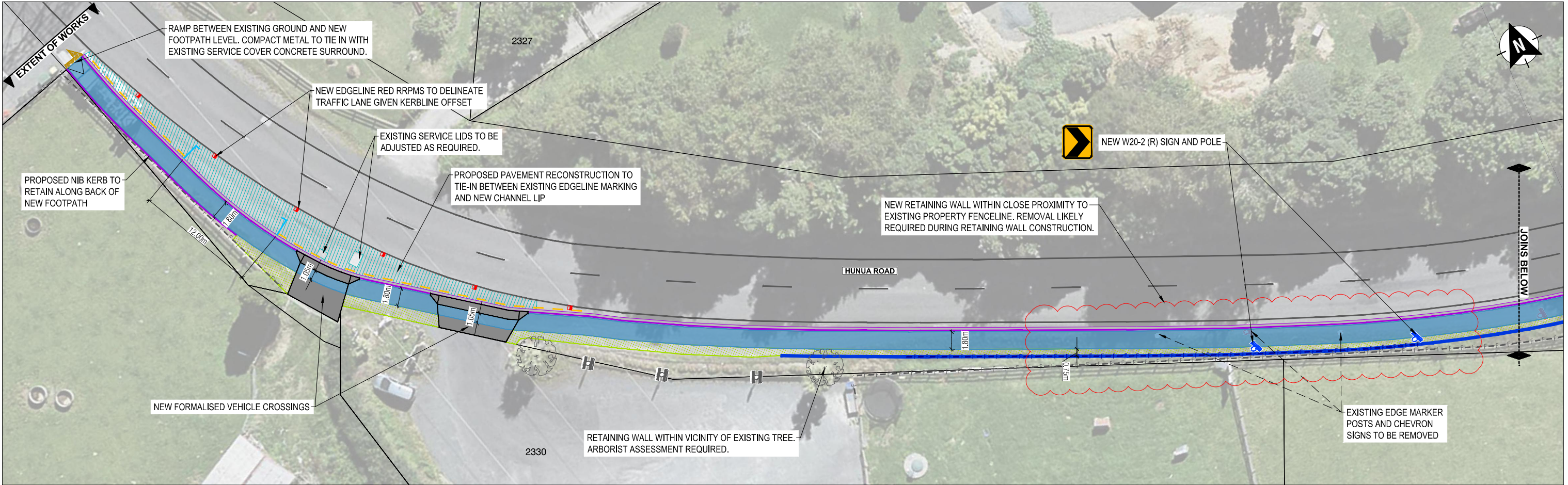
AUCKLAND COUNCIL - FRANKLIN TARGETED RATES PROGRAMME

HUNUA ROAD, HUNUA - PEDESTRIAN IMPROVEMENTS

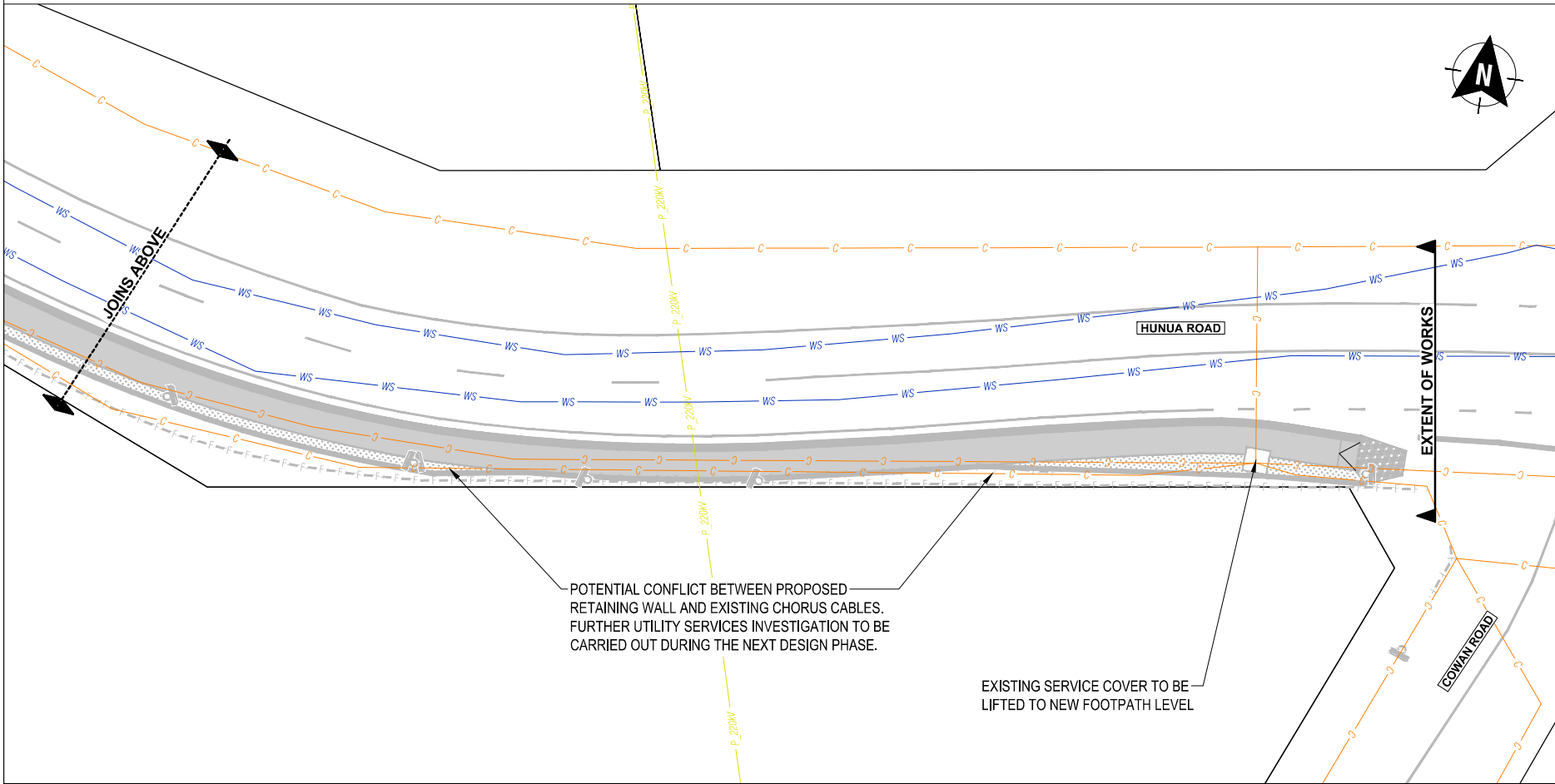
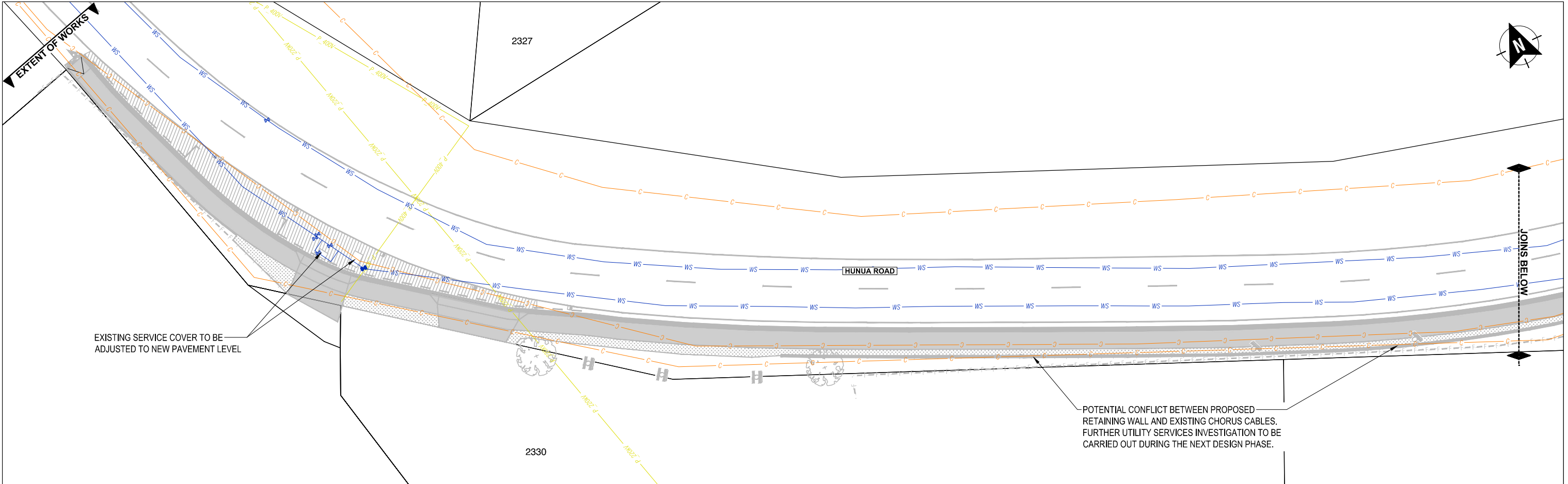
CONCEPT DESIGN

ORIGINAL SIZE **AI**

									Client:	AUCKLAND COUNCIL - FRANKLIN TARGETED RATES PROGRAMME			Drawing Status:	CONCEPT DESIGN		
									Project:	HUNUA ROAD, HUNUA - PEDESTRIAN IMPROVEMENTS			Drawing Date:	24/07/2025		
	B	NEW FOOTPATH EXTENDED TO PETROL STATION						EP	2025-07-24				A1 Scales:	1:200	A3 Scales:	1:400
	A	CONCEPT DESIGN PLAN						EP	2025-07-09							
	REV	REVISIONS						DRAWN	DATE							
	DRAWN	EP	DESIGNED				EP									
	DRAWING CHECK	RL	DESIGN CHECK				RL									
APPROVED	Zelma Vincer						24/7/2025		Drawing Title:	TOPOGRAPHICAL SURVEY						
									Drawing No.	2025-NZA036(002)-050					Revision	B



C:\Users\JPDGRI\OneDrive\Documents\General\LPD Projects\2025\NZA036(002)_FTR AC - Hunua02_CAD\2025\NZA036(002)-300.dwg



SERVICES LEGEND			
C	EXISTING CHORUS		
P_400V	EXISTING POWER (400V)		
P_220kV	EXISTING TRANSMISSION POWER (220kV)		
WS	EXISTING TRANSMISSION WATER (HUNUA LINE 1070-1900mm)		



B	NEW FOOTPATH EXTENDED TO PETROL STATION	EP	2025-07-24
A	CONCEPT DESIGN PLAN	EP	2025-07-09
REV	REVISIONS	DRAWN	DATE
DRAWN	EP	DESIGNED	EP
DRAWING CHECK	RL	DESIGN CHECK	RL
APPROVED	Zelma Vincor		24/7/2025



Client: AUCKLAND COUNCIL - FRANKLIN TARGETED RATES PROGRAMME

Project: HUNUA ROAD, HUNUA - PEDESTRIAN IMPROVEMENTS

Drawing Title: EXISTING SERVICES PLAN

Drawing Status:	CONCEPT DESIGN	
Drawing Date:	24/07/2025	
A1 Scale:	1:200	A3 Scale: 1:400
0 5m		
Drawing No.	2025-NZA036(002)-300	Revision: B