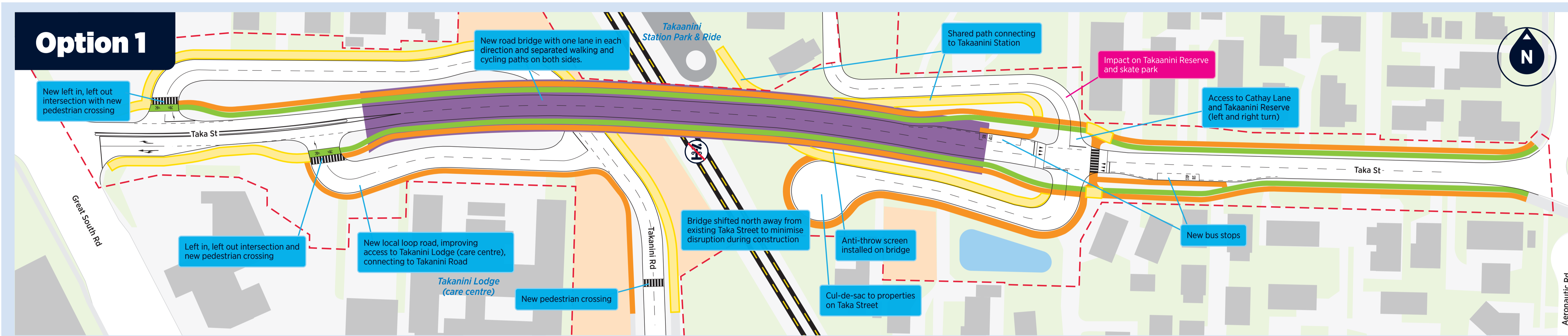


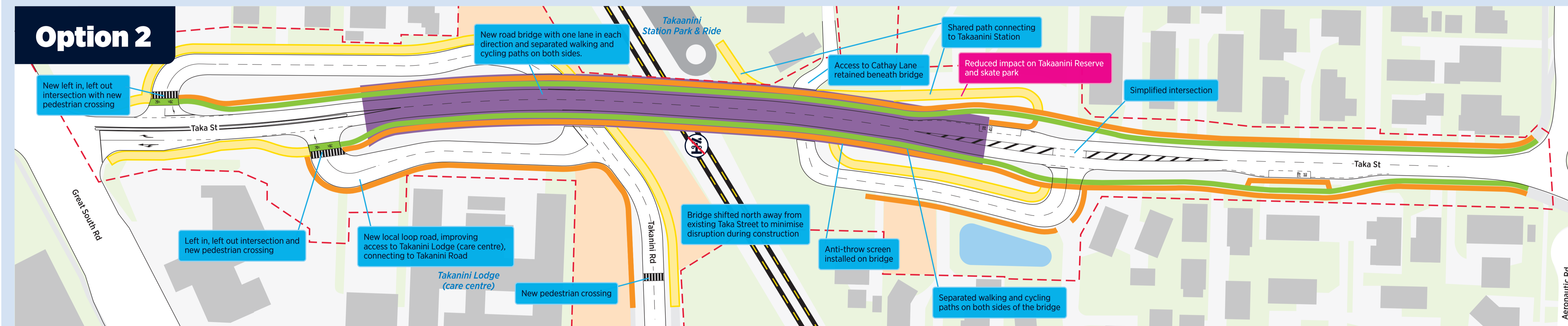
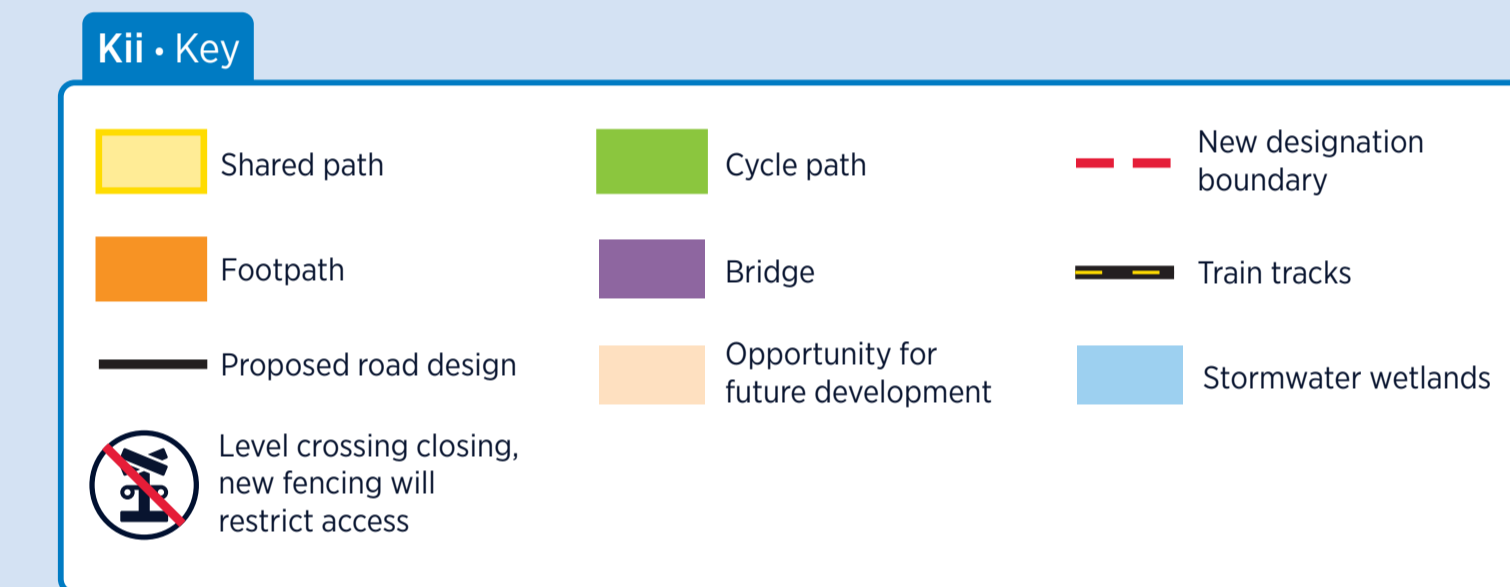


Taka Street



Option 1 for Taka Street

- Retains a similar, on-road access to Cathay Lane from Taka Street, as there is currently
- Has a greater impact on Takaanini Reserve and Skate Park
- Creates a more complex intersection



Option 2 for Taka Street

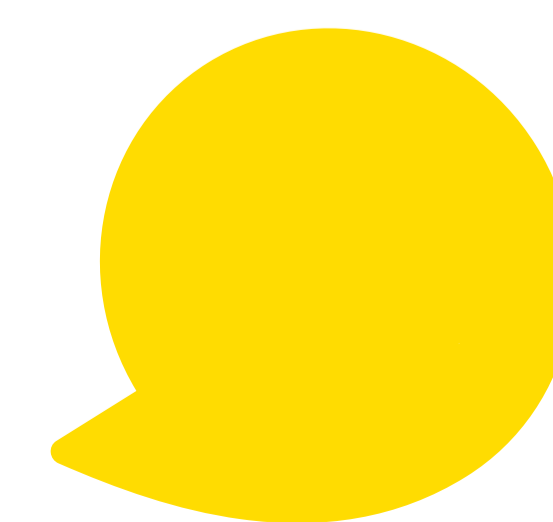
- Provides access to Cathay Lane via a road that goes under the bridge
- Reduces the impact on Takaanini Reserve and Skate Park
- More simplified intersection

New vehicle bridge

- Replacing the level crossing with a new vehicle bridge with one lane in each direction
- Change to bridge location away from Taka Street to minimise disruption during construction
- Separated walking and cycling lanes on both sides of the bridge
- Anti-throw screens to stop anti-social behaviour
- New bus stops in front of the park
- Bridge is future-proofed for additional rail tracks



We're seeking your feedback now



Have your say by

26 June 2026

