

Traffic management plans for stage 2 (between Firth Rd and Stanmore Rd)



**Stage 2: Phase 1 - Firth Road to Richmond Road (Orange Zone)**

<b>Duration</b>	Approx 3 weeks
<b>Traffic Impacts</b>	<p>Traffic flow maintained in both directions along Surrey Crescent. Single lane closures on Browning Street and Firth Street to allow for improvements at the street crossings.</p> <p>Limited on-street parking.</p>
<b>Pedestrian Access</b>	Open to all businesses and residents, slight pedestrian detours may be in place.
<b>Bus Stop</b>	Bus stop 105 may be temporarily relocated, please check the AT travel app for real time updates.



**Phase 1 – Firth to Richmond Road (no exit Browning Street onto Surrey Cres & no entry from Surrey Cres onto Firth Road)**

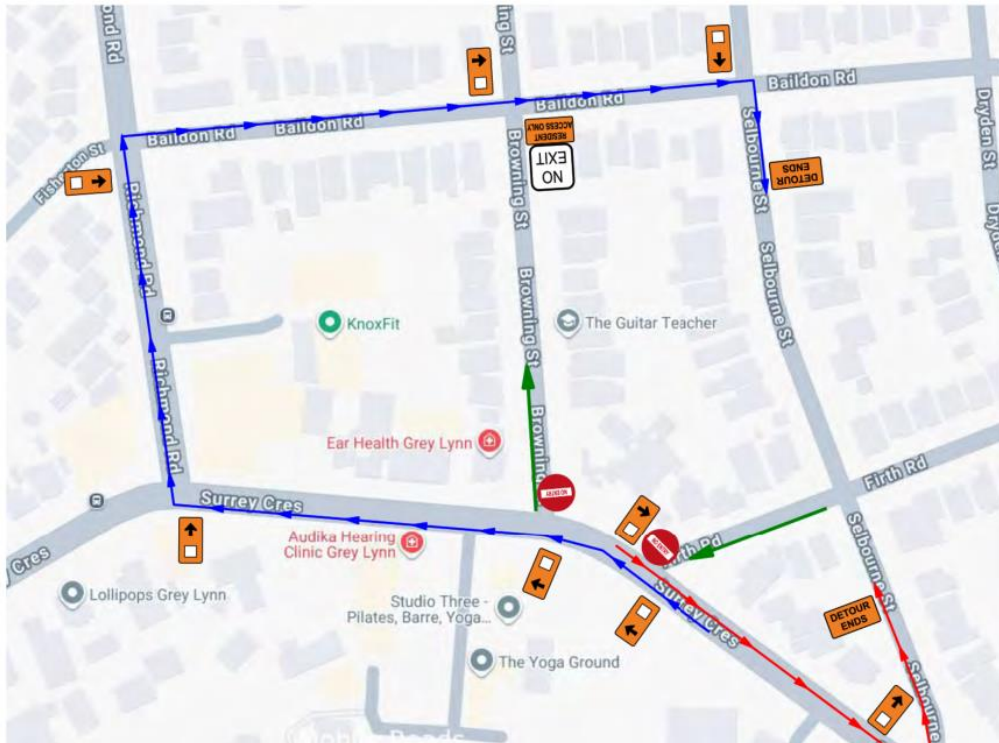


<b>Notes:</b> - All cones in the No parkers at 2.5m spacing - Driveways to be kept open. - No cones to be placed on NSAAT lines. - Lane width at least 3m unless stated	
<b>LEGEND - Permanent Speed 50km/hr</b>	
Worksite	
Safety Zone	
Ramp	
Cones	
Pedestrian Route	
Temporary Bus Stop	
Parking Remains	

Sign visibility distance - 50m min.  
 Warning distance - 50m min.  
 Sign spacing - 25m UNLESS OTHERWISE SHOWN.  
 Longitudinal - 10m min - cones at 10m spacings  
 MTC Taper - 30m min - cones at 2.5m spacings  
 Lateral Safety - 1m

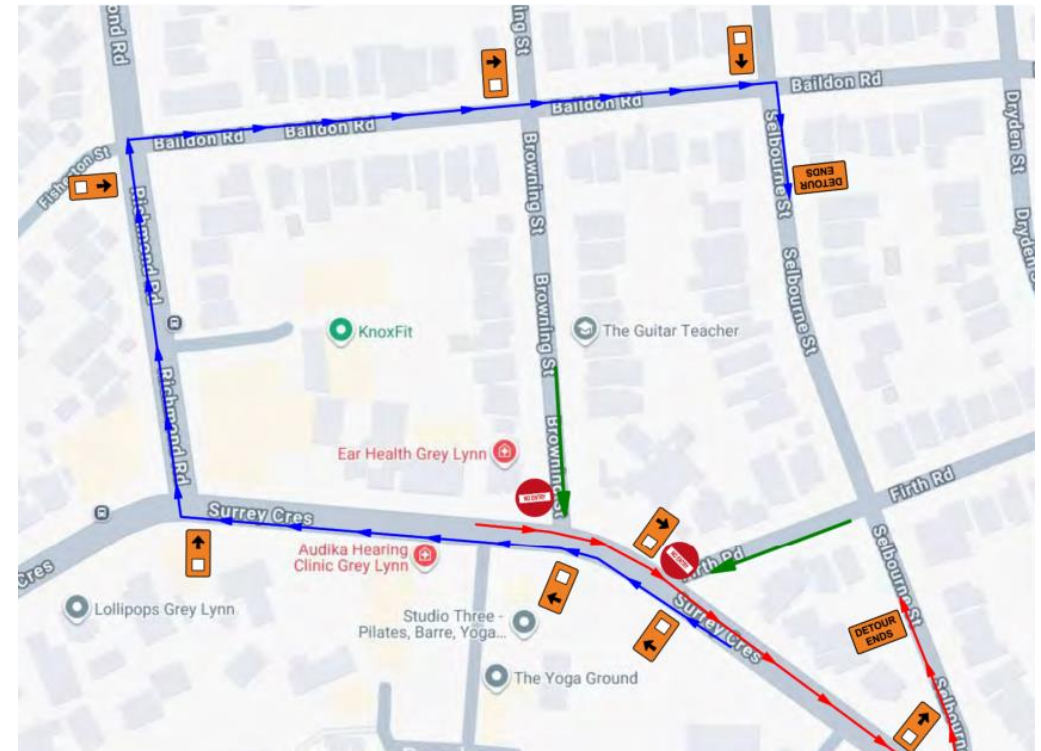


Phase 1 – Firth to Richmond Road detours in place during works, please follow all signage in place.



**No exit from Browning Street onto Surrey Crescent**

**No entry onto Firth Road from Surrey Crescent**



**No entry onto Browning Street from Surrey Crescent**

**No entry onto Firth Road from Surrey Crescent**

**Stage 2: Phase 2 - Gilbert Avenue to Richmond Road (Green Zone)**

<b>Duration</b>	Approx 1.5 weeks
<b>Traffic Impacts</b>	Temporary stop-go operations at the corner of Gilbert Avenue, Stanmore Road, and Surrey Crescent to allow for improvements on Gilbert Avenue street crossing. Traffic flow maintained in both directions along Surrey Crescent at all other times. Limited on-street parking.
<b>Pedestrian Access</b>	Open to all businesses and residents, slight pedestrian detours may be in place. Support in place for access to Lollipops Kindergarten.



Phase 2 - Gilbert Avenue to Richmond Road.



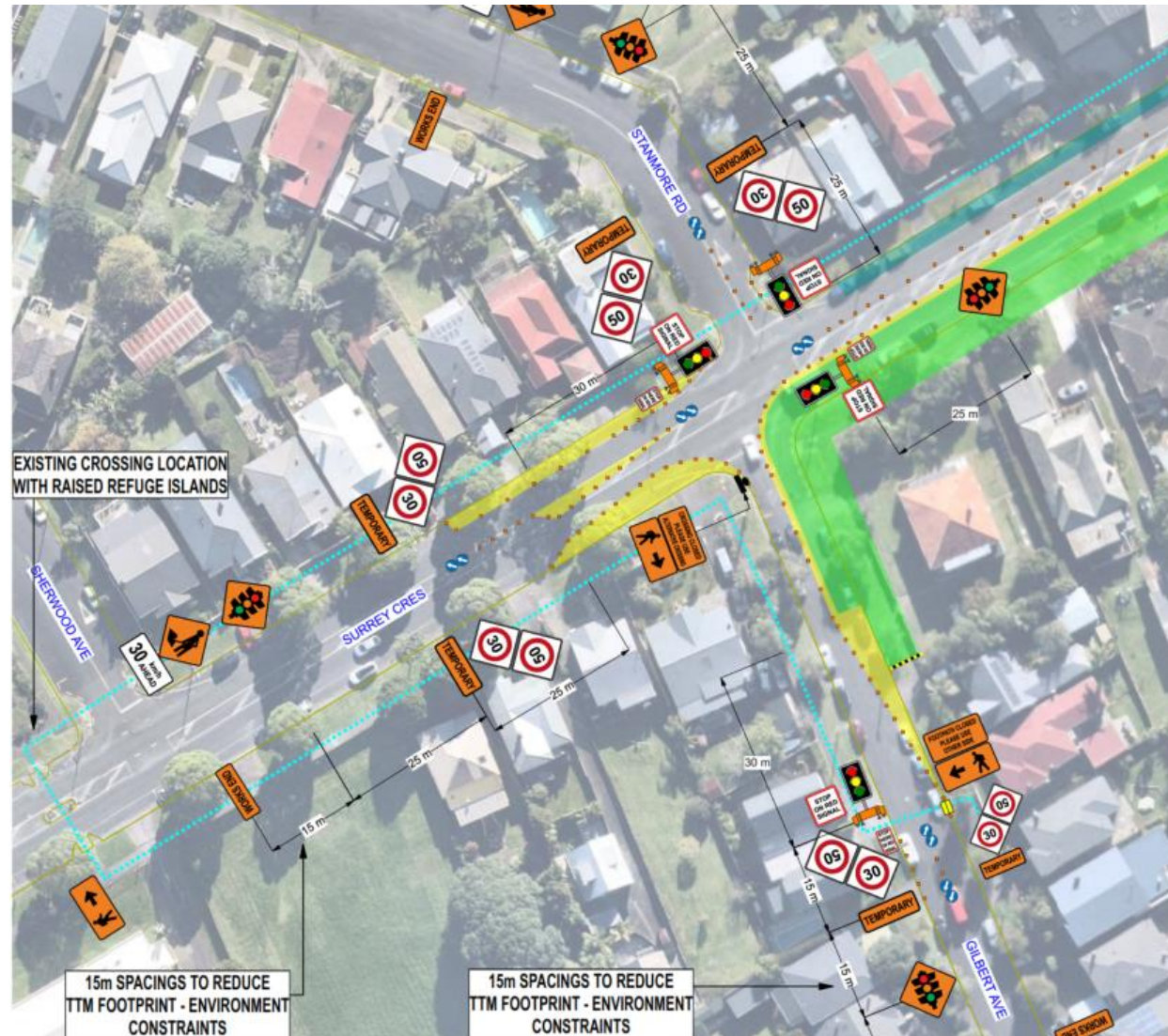
<b>Notes:</b> - All cones in the No parkers at 2.5m spacing - Driveways to be kept open. - No cones to be placed on NSAAT lines. - Lane width at least 3m unless stated	
<b>LEGEND - Permanent Speed 50km/hr</b>	
Worksite	
Safety Zone	
Ramp	
Cones	
Pedestrian Route	
Temporary Bus Stop	
Parking Remains	

Sign visibility distance - 50m min.  
 Warning distance - 50m min.  
 Sign spacing - **25m UNLESS OTHERWISE SHOWN.**  
 Longitudinal - 10m min - cones at 10m spacings  
 MTC Taper - 30m min - cones at 2.5m spacings  
 Lateral Safety - 1m





Phase 2 - Gilbert Avenue to Richmond Road temporary stop go in place on Gilbert Avenue intersection to allow for street crossing improvements.



**Stage 2: Phase 3 - Richmond Road to Firth Road (Red Zone)**

<b>Duration</b>	<b>Approx 1.5 weeks</b>
<b>Traffic Impacts</b>	Traffic flow maintained in both directions along Surrey Crescent. Limited on-street parking.
<b>Pedestrian Access</b>	Open to all businesses and residents, slight pedestrian detours may be in place.



### Phase 3 - Richmond Road to Firth Road



**Notes:**

- All cones in the No parkers at 2.5m spacing
- Driveways to be kept open.
- No cones to be placed on NSAAT lines.
- Lane width at least 3m unless stated

**LEGEND - Permanent Speed 50km/hr**

Worksite	
Safety Zone	
Ramp	
Cones	
Pedestrian Route	
Temporary Bus Stop	
Parking Remains	

Sign visibility distance - 50m min.  
Warning distance - 50m min.  
Sign spacing - **25m UNLESS OTHERWISE SHOWN.**  
Longitudinal - 10m min - cones at 10m spacings  
MTC Taper - 30m min - cones at 2.5m spacings  
Lateral Safety - 1m



