



Getting to School

Every morning over 268,000 children travel to Auckland schools, and over half of these trips are made by car. In the past 20 years, the percentage of children being driven to school has more than doubled.

Travelwise is making a difference*

Safe School Travel Plans have helped:

- Reduce car travel by taking 12,736 car trips off the road in the morning peak.
- Save 2,596,000kms in car travel, about \$20.35m a year on congestion, and about 150,000 litres of fuel.
- Reduce CO2 emissions by 735 tonnes each year.
- Improve safety around Auckland schools – crashes involving pedestrians and cyclists aged 5 to 13 have reduced by 58% at schools with Safe School Travel Plans.

*Auckland Transport, School transport programme (Travelwise) Evaluation 2013.

What is a Safe School Travel Plan?

The Auckland Transport Travelwise programme delivers a Whole School approach to improving road safety and reducing congestion around schools. Safe School Travel Plans are developed and delivered by the school community working in partnership with Auckland Transport, Auckland Council, New Zealand Police and other community groups and organisations. Approximately 75% of Auckland school aged students attend a Travelwise School.

The Benefits of a Safe School Travel Plan:

A Safe School Travel Plan can:

- Reduce accidents and improve safety.
- Ease congestion.
- Build students confidence and independence.
- Develop children's road safety skills.
- Improve the health and wellbeing of your school community.

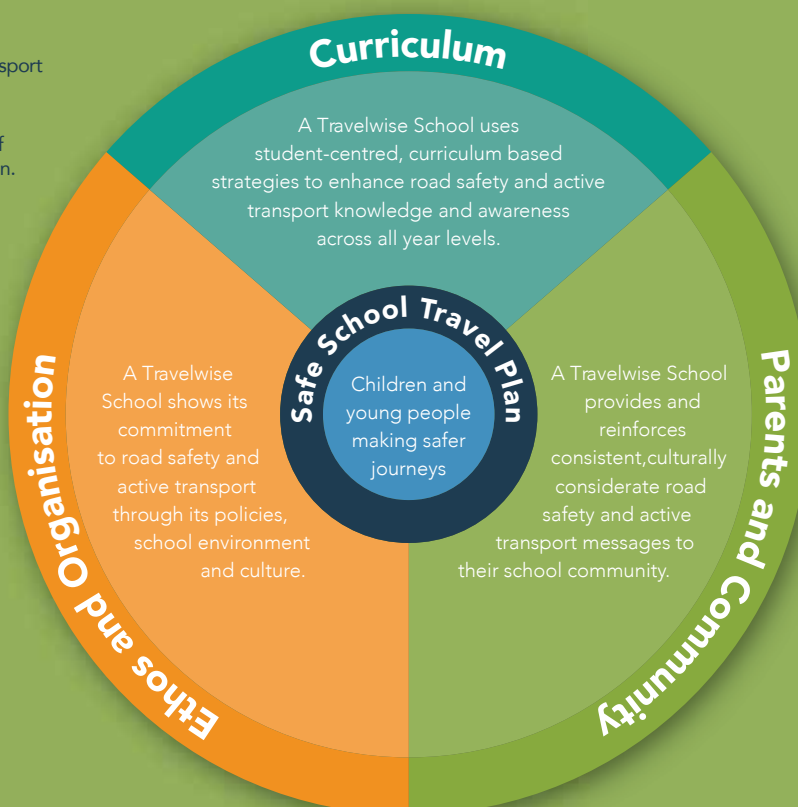
Travelwise: Whole School approach

Curriculum

- Embed road safety and active transport education programmes within a curriculum framework.
- School management supports staff to implement road safety education.
- Use student-centred, interactive strategies.
- Actively engage students in skill development.
- Help students to influence their peers as safe road users.

Ethos and Organisation

- Consult the wider school community when developing and reviewing road safety and active transport plans, policies and procedures.
- School management actively promotes and supports road safety and active transport.
- School staff model appropriate road safety behaviours and attitudes.
- Review the school traffic environment.



Parents and Community

- Provide parents with information to reinforce road safety and active transport messages and skills.
- Consult the school community to reinforce safety and active transport messages and skills.
- Collaborate with other school programme stakeholders to complement school road safety programmes.
- Encourage road safety and active transport through community events and projects.
- Network and work with other Auckland schools to promote road safety and active transport.

Safe School Travel Plans

For further information please contact your local
Community Transport Team.

Central/West: ctcentral@aucklandtransport.govt.nz

North: ctnorth@aucklandtransport.govt.nz

South: ctsouth@aucklandtransport.govt.nz