



This map/plan is illustrative only and all information should be independently verified on site before taking any action. Copyright Auckland Council. Boundary information from LINZ (Crown Copyright Reserved). Whilst due care has been taken, Auckland Council gives no warranty as to the accuracy and completeness of any information on this map/plan and accepts no liability for any error, omission or use of the information. Height datum: Auckland 1946.

Waitakere Ranges election sites

● Existing Site

Created: Wednesday, 20 April 2016, 9:58:37 a.m.

Scale @ A4 1:100000



Auckland Council
Te Kaurihera o Tāmaki Makaurau

(W-WR1) Atkinson Road



This aerial photograph identifies a location which is specified as a Council-controlled place available for the display of election signs. Irrespective of any changes since the photo was taken, the yellow zone is a general indication where the signs can be placed subject to the controls of the Auckland Council and Auckland Transport [Te Ture ā-Rohe mo nga Tohu 2022 / Signs Bylaw 2022](#).

Conditions:

- Signs must keep clear of the frontage of the dwelling at 55 Atkinson Road.

(W-WR2) Forest Hill Road



This aerial photograph identifies a location which is specified as a Council-controlled place available for the display of election signs. Irrespective of any changes since the photo was taken, the yellow zone is a general indication where the signs can be placed subject to the controls of the Auckland Council and Auckland Transport [Te Ture ā-Rohe mo nga Tohu 2022 / Signs Bylaw 2022](#).

Conditions:

- Signs must be placed at least 2m from the kerb block.

(W-WR4) Glendale Road (1 of 2)



This aerial photograph identifies a location which is specified as a Council-controlled place available for the display of election signs. Irrespective of any changes since the photo was taken, the yellow zone is a general indication where the signs can be placed subject to the controls of the Auckland Council and Auckland Transport [Te Ture ā-Rohe mo nga Tohu 2022 / Signs Bylaw 2022](#).

(W-WR5) Glendale Road (2 of 2)



This aerial photograph identifies a location which is specified as a Council-controlled place available for the display of election signs. Irrespective of any changes since the photo was taken, the yellow zone is a general indication where the signs can be placed subject to the controls of the Auckland Council and Auckland Transport [Te Ture ā-Rohe mo nga Tohu 2022 / Signs Bylaw 2022](#).

(W-WR6) Glenview Road (map 1 of 3)



This aerial photograph identifies a location which is specified as a Council-controlled place available for the display of election signs. Irrespective of any changes since the photo was taken, the yellow zone is a general indication where the signs can be placed subject to the controls of the Auckland Council and Auckland Transport [Te Ture ā-Rohe mo nga Tohu 2022 / Signs Bylaw 2022](#).

Conditions:

- The signs can be placed from approximately 60m north of the chevron boards opposite the school boundary until about 20m back from the traffic signals at the intersection with Great North Road.
- Signs must not be placed in front of any gateways, including gateways that are grassed.
- Signs must be placed at least 2m from the kerb block.
- Signs cannot be placed farther south than opposite the northern end of the Glen Eden Primary school property.

(W-WR6) Glenview Road (map 2 of 3)



This aerial photograph identifies a location which is specified as a Council-controlled place available for the display of election signs. Irrespective of any changes since the photo was taken, the yellow zone is a general indication where the signs can be placed subject to the controls of the Auckland Council and Auckland Transport [Te Ture ā-Rohe mo nga Tohu 2022 / Signs Bylaw 2022](#).

Conditions:

- The signs can be placed from approximately 60m north of the chevron boards opposite the school boundary until about 20m back from the traffic signals at the intersection with Great North Road.
- Signs must not be placed in front of any gateways, including gateways that are grassed.
- Signs must be placed at least 2m from the kerb block.
- Signs cannot be placed farther south than opposite the northern end of the Glen Eden Primary school property.

(W-WR6) Glenview Road (map 3 of 3)



This aerial photograph identifies a location which is specified as a Council-controlled place available for the display of election signs. Irrespective of any changes since the photo was taken, the yellow zone is a general indication where the signs can be placed subject to the controls of the Auckland Council and Auckland Transport [Te Ture ā-Rohe mo nga Tohu 2022 / Signs Bylaw 2022](#).

Conditions:

- The signs can be placed from approximately 60m north of the chevron boards opposite the school boundary until about 20m back from the traffic signals at the intersection with Great North Road.
- Signs must not be placed in front of any gateways, including gateways that are grassed.
- Signs must be placed at least 2m from the kerb block.
- Signs cannot be placed farther south than opposite the northern end of the Glen Eden Primary school property.

(W-WR7) Holdens Road



This aerial photograph identifies a location which is specified as a Council-controlled place available for the display of election signs. Irrespective of any changes since the photo was taken, the yellow zone is a general indication where the signs can be placed subject to the controls of the Auckland Council and Auckland Transport [Te Ture ā-Rohe mo nga Tohu 2022 / Signs Bylaw 2022](#).

(W-WR8A) Huia Road



This aerial photograph identifies a location which is specified as a Council-controlled place available for the display of election signs. Irrespective of any changes since the photo was taken, the yellow zone is a general indication where the signs can be placed subject to the controls of the Auckland Council and Auckland Transport [Te Ture ā-Rohe mo nga Tohu 2022 / Signs Bylaw 2022](#).

Conditions:

- Signs must be placed at least 2m from the kerb block.

Note:

- There is no on-street parking in the immediate vicinity of this site.

(W-WR9) Parrs Cross Road / West Coast Road junction



This aerial photograph identifies a location which is specified as a Council-controlled place available for the display of election signs. Irrespective of any changes since the photo was taken, the yellow zone is a general indication where the signs can be placed subject to the controls of the Auckland Council and Auckland Transport [Te Ture ā-Rohe mo nga Tohu 2022 / Signs Bylaw 2022](#).

Note:

- There is no on-street parking in the immediate vicinity of this site

(W-WR10) Pleasant Road



This aerial photograph identifies a location which is specified as a Council-controlled place available for the display of election signs. Irrespective of any changes since the photo was taken, the yellow zone is a general indication where the signs can be placed subject to the controls of the Auckland Council and Auckland Transport [Te Ture ā-Rohe mo nga Tohu 2022 / Signs Bylaw 2022](#).

Conditions:

- Signs must be kept clear of the traffic sign located at the point marked by a red circle.

(W-WR11) Scenic Drive



This aerial photograph identifies a location which is specified as a Council-controlled place available for the display of election signs. Irrespective of any changes since the photo was taken, the yellow zone is a general indication where the signs can be placed subject to the controls of the Auckland Council and Auckland Transport [Te Ture ā-Rohe mo nga Tohu 2022 / Signs Bylaw 2022](#).

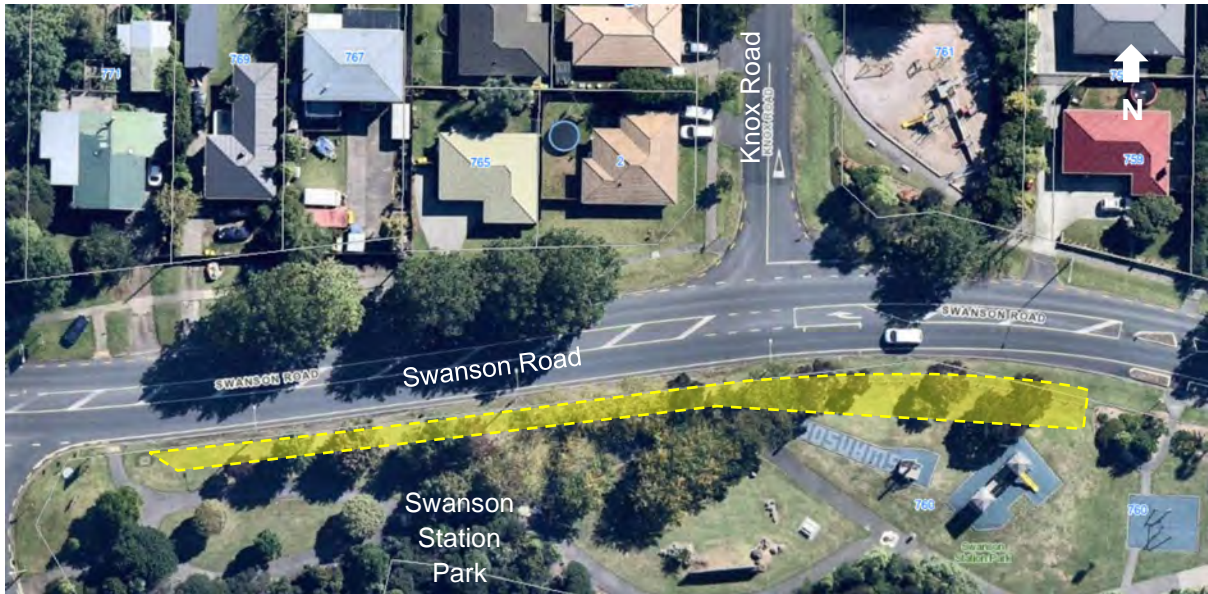
Conditions:

- Signs must be placed at least 3m from the footpath on the western edge of the site to avoid obstructing visibility.

Note:

- There is no on-street parking in the immediate vicinity of this site.

(W-WR12) Swanson Road (1 of 3)



This aerial photograph identifies a location which is specified as a Council-controlled place available for the display of election signs. Irrespective of any changes since the photo was taken, the yellow zone is a general indication where the signs can be placed subject to the controls of the Auckland Council and Auckland Transport [Te Ture ā-Rohe mo nga Tohu 2022 / Signs Bylaw 2022](#).

Conditions:

- Signs must be placed at least 2m from the kerb block.

(W-WR13) Swanson Road (2 of 3)

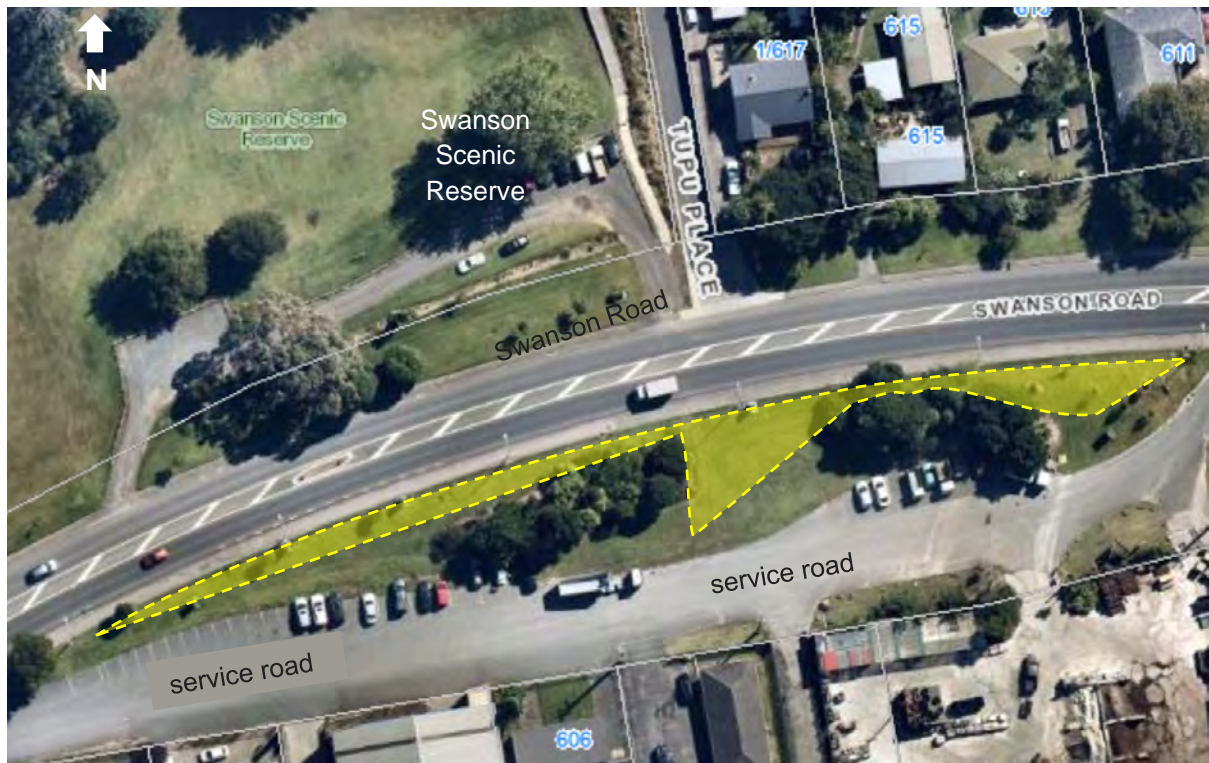


This aerial photograph identifies a location which is specified as a Council-controlled place available for the display of election signs. Irrespective of any changes since the photo was taken, the yellow zone is a general indication where the signs can be placed subject to the controls of the Auckland Council and Auckland Transport [Te Ture ā-Rohe mo nga Tohu 2022 / Signs Bylaw 2022](#).

Conditions:

- Signs must be placed at least 2m from the kerb block.

(W-WR14) Swanson Road (3 of 3)



This aerial photograph identifies a location which is specified as a Council-controlled place available for the display of election signs. Irrespective of any changes since the photo was taken, the yellow zone is a general indication where the signs can be placed subject to the controls of the Auckland Council and Auckland Transport [Te Ture ā-Rohe mo nga Tohu 2022 / Signs Bylaw 2022](#).

Conditions:

- Signs must be placed at least 2m from the kerb block.

(W-WR16) Te Henga Road



This aerial photograph identifies a location which is specified as a Council-controlled place available for the display of election signs. Irrespective of any changes since the photo was taken, the yellow zone is a general indication where the signs can be placed subject to the controls of the Auckland Council and Auckland Transport [Te Ture ā-Rohe mo nga Tohu 2022 / Signs Bylaw 2022](#).

Note:

- There is no on-street parking in the immediate vicinity of this site.
- Limited space on this site due to drip lines of trees.

(W-WR17) Township Road



This aerial photograph identifies a location which is specified as a Council-controlled place available for the display of election signs. Irrespective of any changes since the photo was taken, the yellow zone is a general indication where the signs can be placed subject to the controls of the Auckland Council and Auckland Transport [Te Ture ā-Rohe mo nga Tohu 2022 / Signs Bylaw 2022](#).

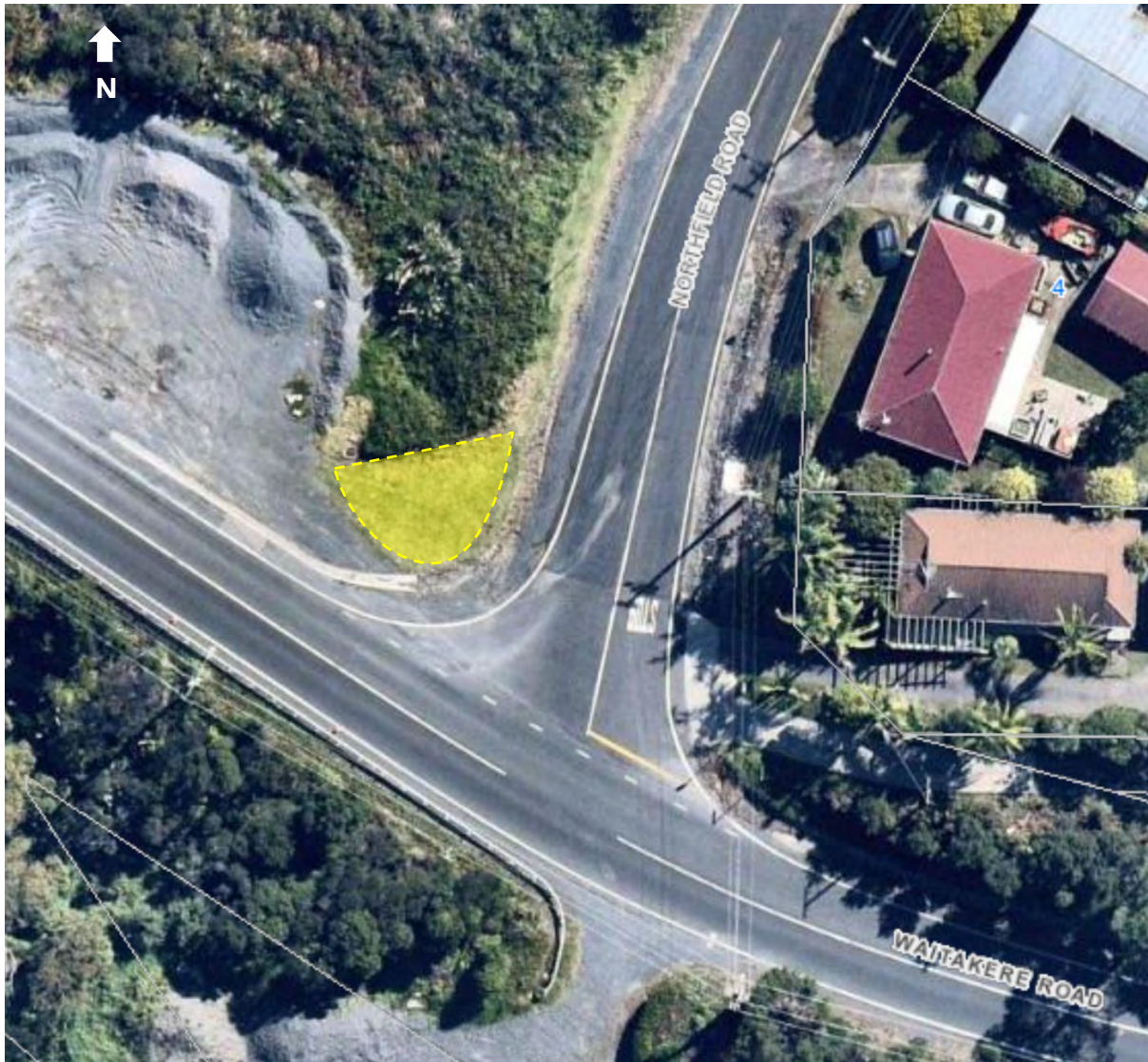
Conditions:

- This site has been identified as a V-shaped sign site.

Note:

- There is no on-street parking in the immediate vicinity of this site.

(W-WR18) Waitakere Road / Northfield Road junction



This aerial photograph identifies a location which is specified as a Council-controlled place available for the display of election signs. Irrespective of any changes since the photo was taken, the yellow zone is a general indication where the signs can be placed subject to the controls of the Auckland Council and Auckland Transport [Te Ture ā-Rohe mo nga Tohu 2022 / Signs Bylaw 2022](#).

Conditions:

- Signs must be west facing only due to the short visibility distance to the designated area from the eastern approach, the 80km/h speed limit and poor safety record along Waitakere Road.
- Signs must be a minimum of 500mm clear of the turning area.

(W-WR19) West Coast Road (1 of 3)



This aerial photograph identifies a location which is specified as a Council-controlled place available for the display of election signs. Irrespective of any changes since the photo was taken, the yellow zone is a general indication where the signs can be placed subject to the controls of the Auckland Council and Auckland Transport [Te Ture ā-Rohe mo nga Tohu 2022 / Signs Bylaw 2022](#).

(W-WR20) West Coast Road (2 of 3)



This aerial photograph identifies a location which is specified as a Council-controlled place available for the display of election signs. Irrespective of any changes since the photo was taken, the yellow zone is a general indication where the signs can be placed subject to the controls of the Auckland Council and Auckland Transport [Te Ture ā-Rohe mo nga Tohu 2022 / Signs Bylaw 2022](#).

Conditions:

- Signs must be placed at least 2m from the kerb block.

Note:

- There is no on-street parking in the immediate vicinity of this site.

(W-WR21) West Coast Road (3 of 3)



This aerial photograph identifies a location which is specified as a Council-controlled place available for the display of election signs. Irrespective of any changes since the photo was taken, the yellow zone is a general indication where the signs can be placed subject to the controls of the Auckland Council and Auckland Transport [Te Ture ā-Rohe mo nga Tohu 2022 / Signs Bylaw 2022](#).

(W-WR22) Withers Road



This aerial photograph identifies a location which is specified as a Council-controlled place available for the display of election signs. Irrespective of any changes since the photo was taken, the yellow zone is a general indication where the signs can be placed subject to the controls of the Auckland Council and Auckland Transport [Te Ture ā-Rohe mo nga Tohu 2022 / Signs Bylaw 2022](#).

(W-WR23) Woodlands Park Road



This aerial photograph identifies a location which is specified as a Council-controlled place available for the display of election signs. Irrespective of any changes since the photo was taken, the yellow zone is a general indication where the signs can be placed subject to the controls of the Auckland Council and Auckland Transport [Te Ture ā-Rohe mo nga Tohu 2022 / Signs Bylaw 2022](#).