

# Road Safety Mini Expos



## Aims:

- To promote travelling to and from school in a sustainable way.
- To educate young people about the risks of being a young driver.
- To reinforce road safety messages for young drivers and bus users.

## Before the Day

- Travelwise student group meets with Community Transport Coordinator, Lead Teacher, School Community Officer and any other relevant stakeholders to discuss:
  - the reason/s for hosting an road safety expo and to clarify the specific aim for your school
  - options and stations available and suitability
  - booking suitable venue
  - set date and time
- School needs to confirm with the Community Transport Coordinator and School Community Officer the stations required and allocate responsibilities.
- Community Transport Coordinator will respond with the list of equipment and resources the school will need to provide for each station.
- Student group to work on advertising across the school to promote the event details - via assembly items, daily notices, the intranet and newsletter.

## On the Day

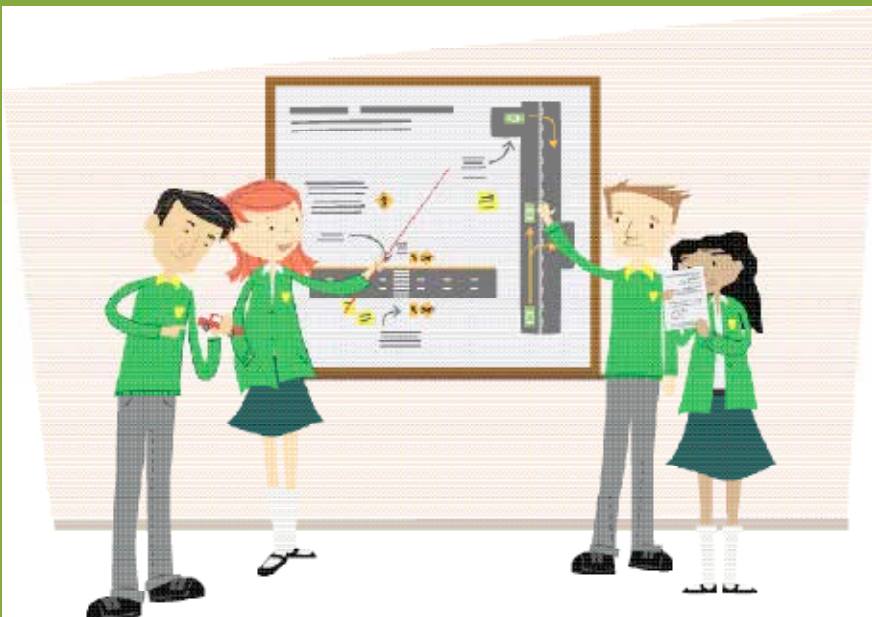
The Travelwise group to:

- Set up tables and other equipment required.
- Meet visitors arriving to support.
- Ensure all materials needed are on site.
- Clean up after the event.

## After the Day

The Travelwise group to:

- Collate numbers of participants from the day.
- Follow up assemblies as required, e.g. Go through the correct answers for quiz and present winners with prizes.



## Activity Station suggestions

The following list outlines possible stations you might want to include in your expo or feel free to come up with your own ideas.

Stations	Organisation	Requirements
HOP Card Station	Auckland Transport PT	Flyers provided / top up machine
Spin challenge	Student Group	Spin bikes – sport codes
Licence station	NZ Police / Auckland Transport	Restricted/learner licence flyer
Police booze bus	NZ Police	Car park space
Breathalyser	NZ Police	
Speed camera	NZ Police	Grass area for running
Slow bike race	Auckland Transport / Student Group	4 bikes, space, prize
Bike smoothie maker	Book through Tumeke Cycles	Ingredients for making smoothies
Road safety quiz	Auckland Transport / Student Group	Copies on day
IML click safety quiz	Auckland Transport	IML click kit
Fatal vision goggles	Auckland Transport	Kit (16 years of age and up)
E-drive	Auckland Transport / School	online activity

