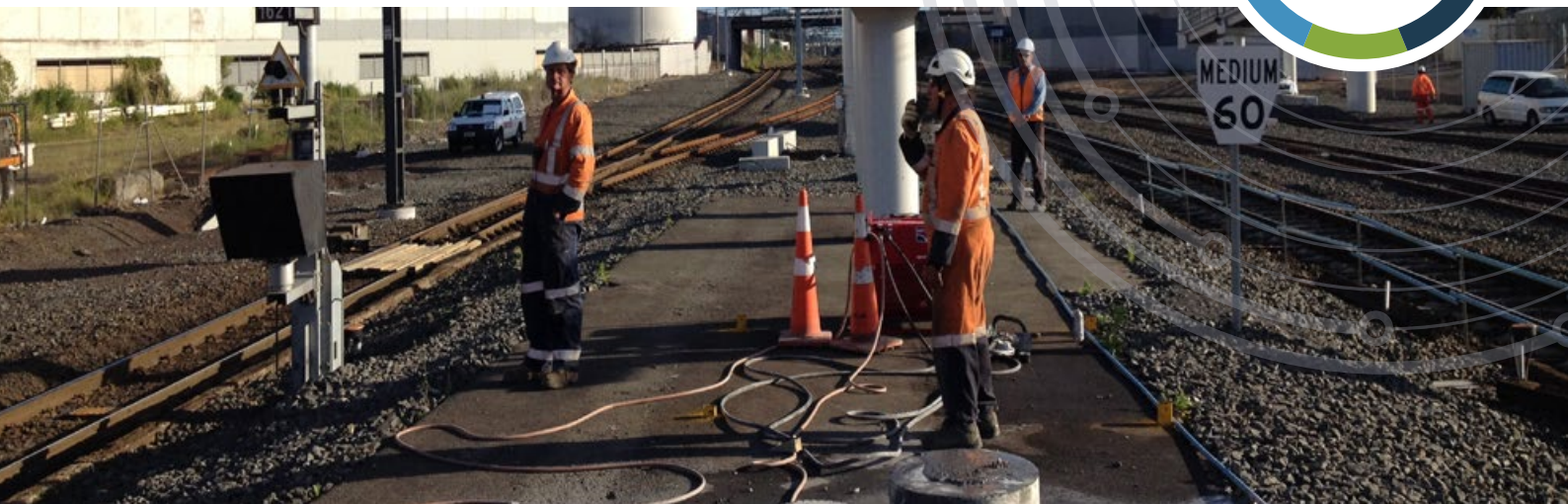


Otahuhu Bus Train Interchange

December 2014



Welcome to the first project update newsletter on the Otahuhu Bus Train Interchange.

When completed, the new network of buses and trains will change the way you travel in and around Otahuhu. This is one of the key projects to take Aucklanders towards a simpler and more integrated public transport network. Benefits include:

- Bus platforms for passengers moving between bus services and the train platforms.
- Vehicle drop off area and taxi stand.
- Interchange building providing waiting space and customer facilities.
- Clear, safe separation of buses, trains, pedestrians, cyclists and other vehicles.

Dismantling Titi Street Bridge

Ground work for the construction of the Otahuhu Bus Train Interchange is in full swing. In November, the Fulton Hogan team began work on dismantling Titi Street Bridge ramps to Otahuhu Station platform. Five bridge spans that made up the ramp were first removed by a crane. This was followed by concrete cutting of the ramp bridge piers and craning these out and demolishing the remaining ramp structure on the platform.

Over the Christmas period, piling to support the interchange's concourse will commence. Piling is building the foundation where concrete is driven into the ground to support a structure

Changes to train schedules

Work near and on the rail corridor requires blocking one or both lines and isolating the overhead electric lines. Please be aware of changes to train schedules with buses replacing train services.

Access additional information on the upgrades to Auckland's rail network via this [link](#).

Thursday 25 December 2014 to 4 January 2015

Full network closure – a bus replacement service will operate on all lines. This is to allow significant renewals at Newmarket, Penrose, Westfield and Wiri and Papakura, sleeper replacement on the Eastern Line, station work at Otahuhu and NZTA motorway work at Takanini and Ellerslie.

Monday 5 January to Sunday 11 January 2015

Buses replace trains on the Western Line. Normal train services will operate on all other lines. This is to allow for track upgrades at Morningside and Kingdon Street and sleeper replacement works at level crossings.

For more information

Email Greg.Horne@aucklandtransport.govt.nz
phone 09 355 3553 or visit at.govt.nz/projects



Titi Street Bridge dismantling



Preparing to lift first bridge span



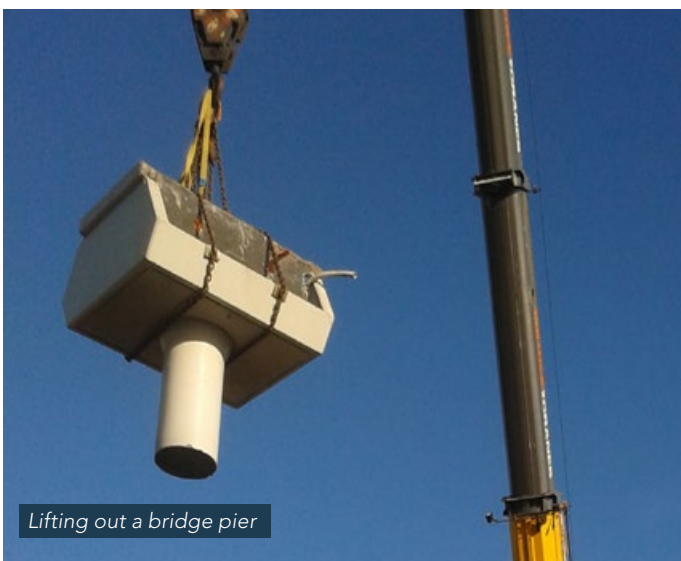
Lifting bridge span



Lifting first bridge beam



Lifting out a bridge pier



Lifting out a bridge pier



Bridge beam removed

For more information

Email Greg.Horne@aucklandtransport.govt.nz
phone 09 355 3553 or visit at.govt.nz/projects

