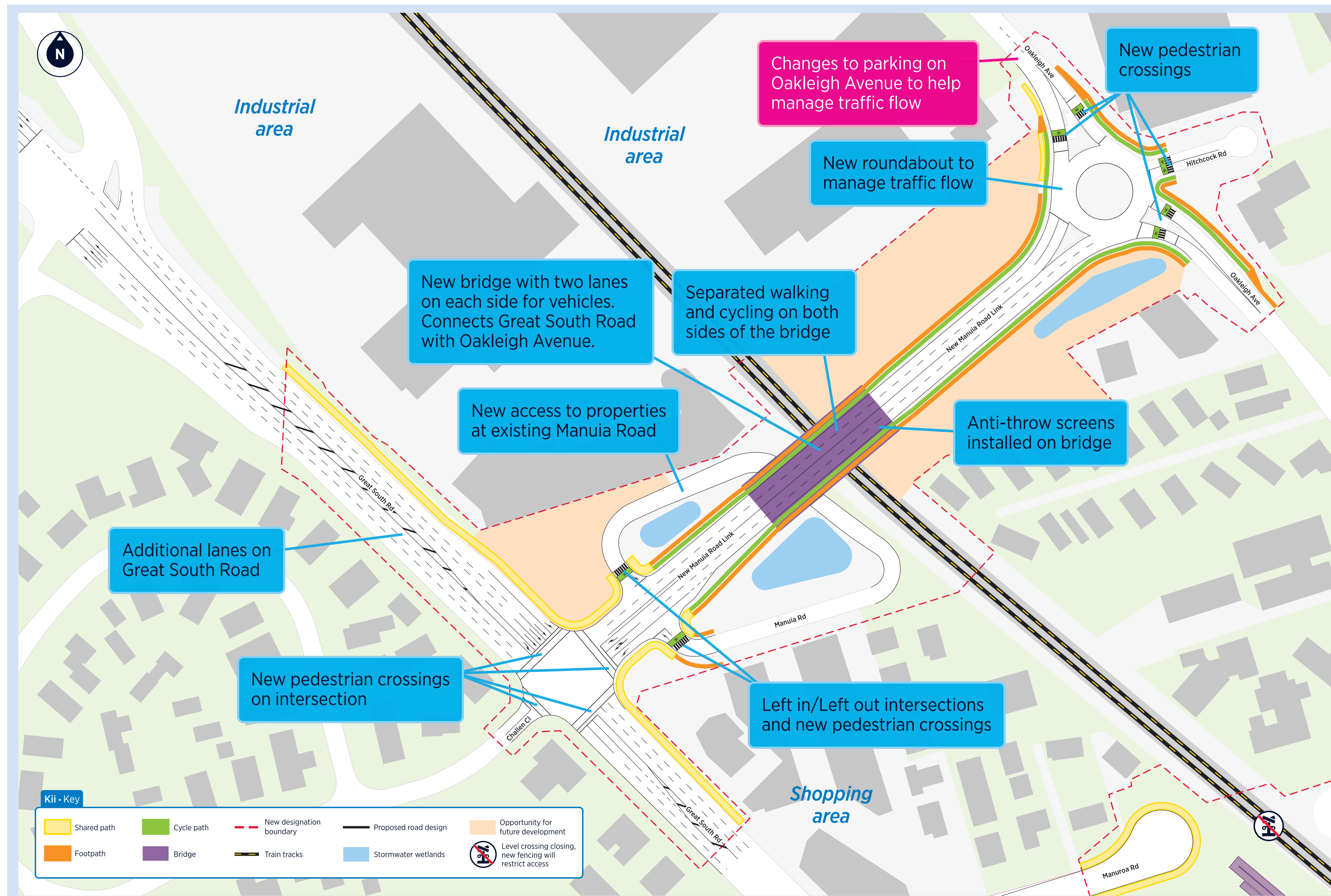




Manuia Road

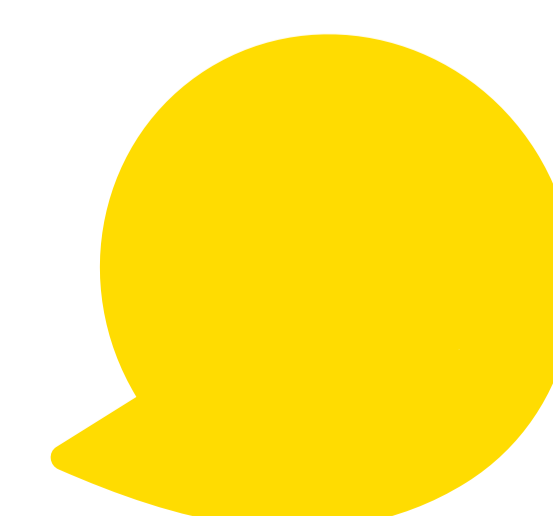


New vehicle bridge

- Vehicle bridge with two lanes in each direction
- Separated walking and cycling lanes on both sides of the bridge
- A new roundabout at Oakleigh Avenue
- Parking changes along Oakleigh Avenue to help the flow of heavy vehicles approaching the roundabout
- New loop road to access properties and businesses in Manuia Road
- Extra lane in each direction added to Great South Road to help manage traffic flow
- New pedestrian crossings
- Anti-throw screens to stop anti-social behaviour
- Bridge is future-proofed for additional rail tracks



We're seeking your feedback now



Have your say by
26 June 2026

