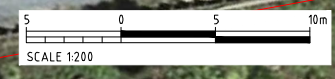
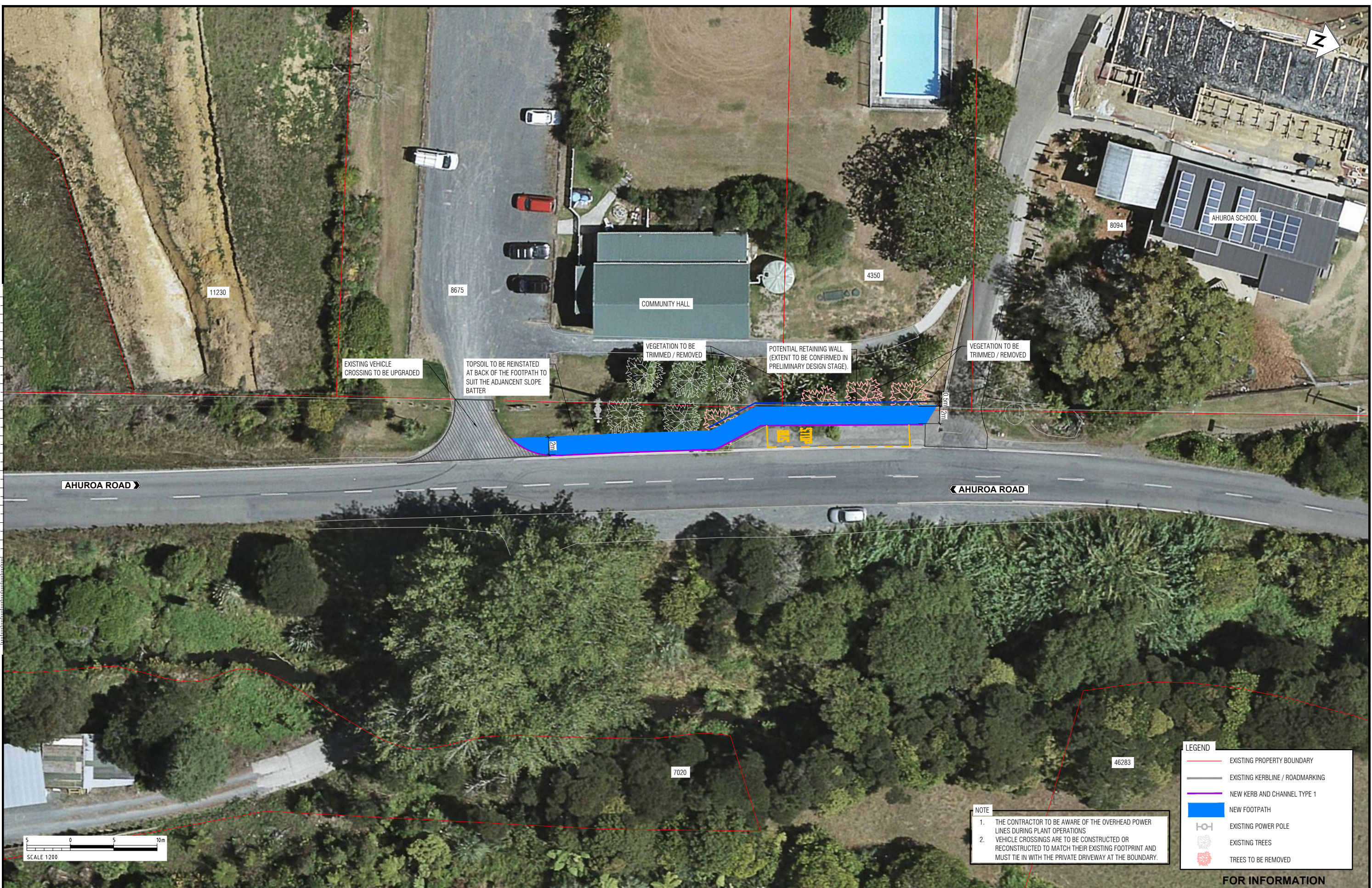


ORIGINAL SIZE A1

Last modified: Oct 31 2018 By: Dnyanada Vyawahare

200 mm DO NOT SCALE - IF IN DOUBT, ASK



LEGEND	
	EXISTING PROPERTY BOUNDARY
	EXISTING KERBLINE / ROADMARKING
	NEW KERB AND CHANNEL TYPE 1
	NEW FOOTPATH
	EXISTING POWER POLE
	EXISTING TREES
	TREES TO BE REMOVED

**NOTE**

1. THE CONTRACTOR TO BE AWARE OF THE OVERHEAD POWER LINES DURING PLANT OPERATIONS
2. VEHICLE CROSSINGS ARE TO BE CONSTRUCTED OR RECONSTRUCTED TO MATCH THEIR EXISTING FOOTPRINT AND MUST TIE IN WITH THE PRIVATE DRIVEWAY AT THE BOUNDARY.

**FOR INFORMATION**

REV	DESCRIPTION	DV	CHK	APP	DATE
A	SCHEME DESIGN				12.2022
	REVISIONS				

SURVEYED	S ROOKE	-
DESIGNED	-	-
DRAWN	-	-
CAD REVIEW	-	-
DESIGN CHECK	-	-
DESIGN REVIEW	-	-
APPROVED	-	-
PROF REGISTRATION	-	-

AUCKLAND TRANSPORT  
 AHUROA ROAD FOOTPATH IMPROVEMENTS  
 GENERAL LAYOUT AND KEY DIMENSIONS PLAN

Status Stamp	<b>DRAFT CONSULTATION PLAN</b>
Date Stamp	<b>08.12.2022</b>
Scales	1:200@A1, 1:400@A3
Drawing No.	310205515-02-001_G020
Rev.	A