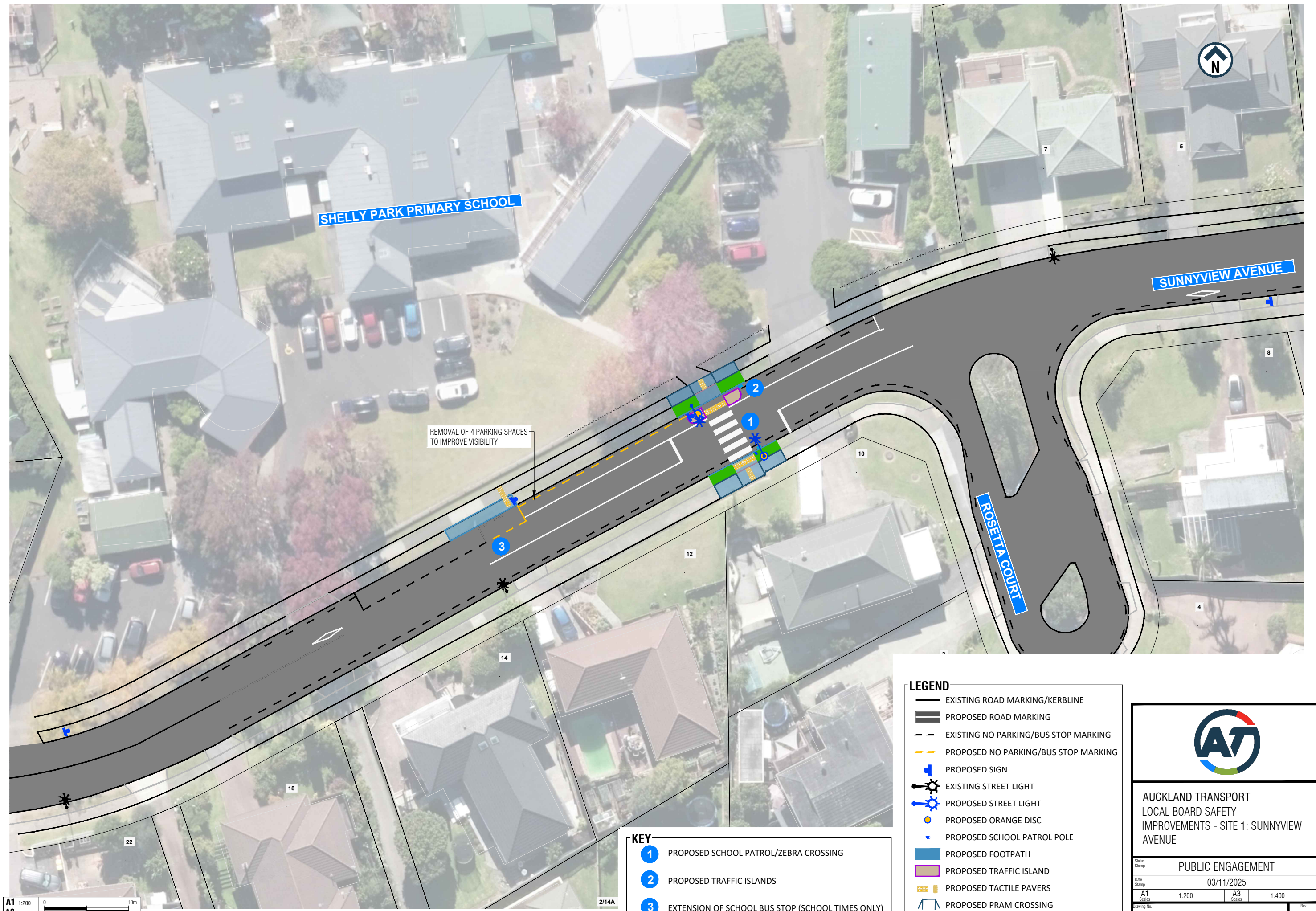


DO NOT SCALE - IF IN DOUBT, ASK

200mm
150
100
90
80
70
60
50
40
30
20
10
0

ORIGINAL SIZE A1



SHELLY PARK PRIMARY SCHOOL

SUNNYVIEW AVENUE

ROSETTA COURT

REMOVAL OF 4 PARKING SPACES
TO IMPROVE VISIBILITY

- KEY**
- 1 PROPOSED SCHOOL PATROL/ZEBRA CROSSING
 - 2 PROPOSED TRAFFIC ISLANDS
 - 3 EXTENSION OF SCHOOL BUS STOP (SCHOOL TIMES ONLY)

- LEGEND**
- EXISTING ROAD MARKING/KERBLINE
 - PROPOSED ROAD MARKING
 - EXISTING NO PARKING/BUS STOP MARKING
 - PROPOSED NO PARKING/BUS STOP MARKING
 - PROPOSED SIGN
 - EXISTING STREET LIGHT
 - PROPOSED STREET LIGHT
 - PROPOSED ORANGE DISC
 - PROPOSED SCHOOL PATROL POLE
 - PROPOSED FOOTPATH
 - PROPOSED TRAFFIC ISLAND
 - PROPOSED TACTILE PAVERS
 - PROPOSED PRAM CROSSING



AUCKLAND TRANSPORT
LOCAL BOARD SAFETY
IMPROVEMENTS - SITE 1: SUNNYVIEW
AVENUE

Status Stamp	PUBLIC ENGAGEMENT			
Date Stamp	03/11/2025			
A1 Scales	1:200	A3 Scales	1:400	
Drawing No.	S20240470.06-01_C030			Rev. B

A1 1:200
A3 1:400
0 10m

2/14A