



April Board Meeting – 2025

Sustainability Strategy: YE 2025 Q1 & Q2 Report

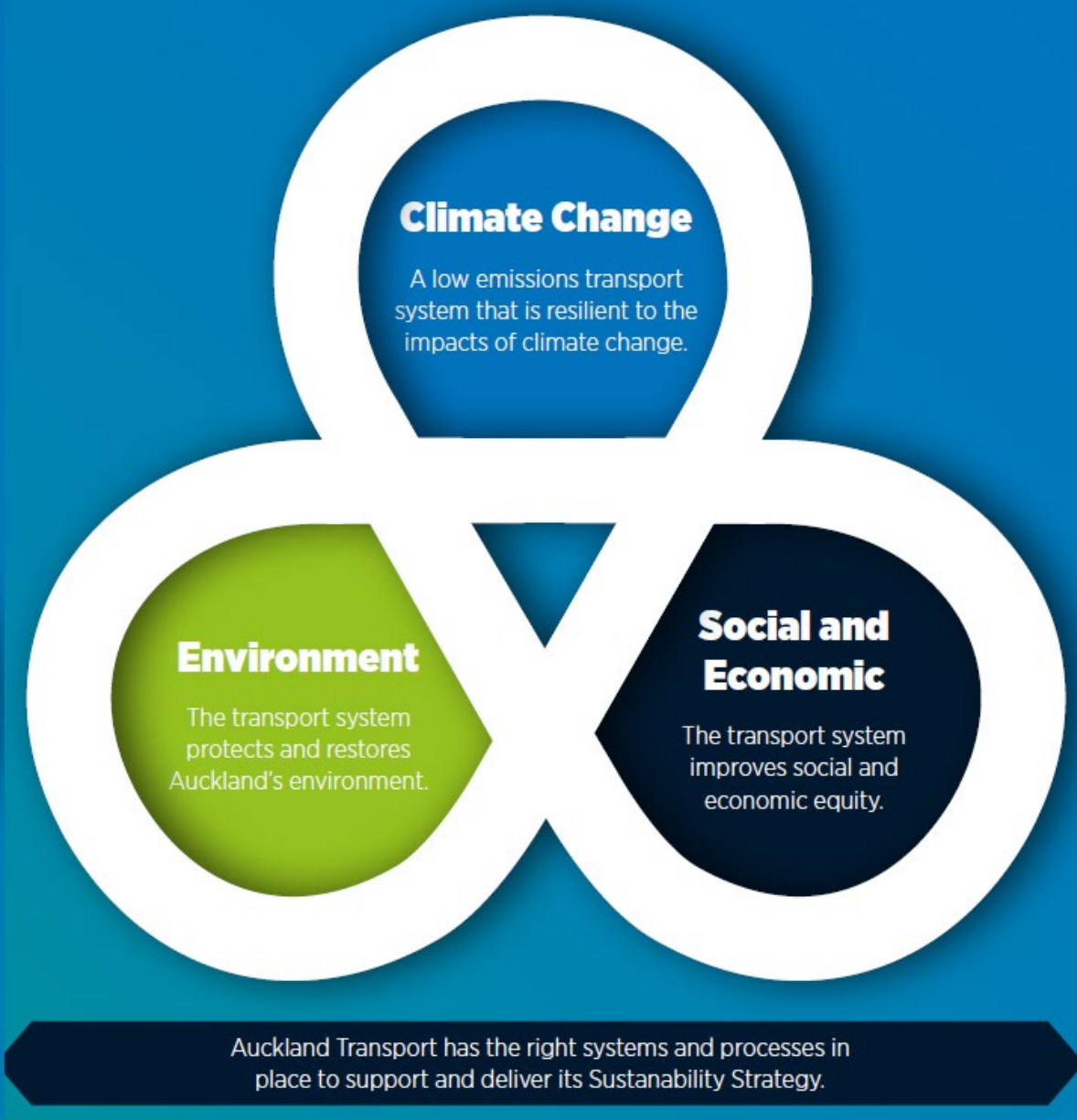


April 2025



This report is to update the Board on progress towards achievement of the AT Sustainability Strategy targets.

Emissions SOI target at risk as at Q2
Māori spend SOI target on track as at Q3.



Climate Change: GHG emissions

Operational Emissions (incl PT)

50% overall emissions reduction by 2031 against 2021/22 baseline

Delivered by AT



Data: Quarterly

SOI: 10% increase from 2021/22 (1% decrease from 2023/24)

Embodied Emissions

50% reduction in embodied emissions by 2031 against 2021/2022 baseline

Delivered by AT



Data: Annually

AT actively influences reductions in private vehicle emissions

Auckland's transport system is contributing to national and regional emissions reduction targets in-line with limiting total global warming to 1.5°C

Delivered with AC



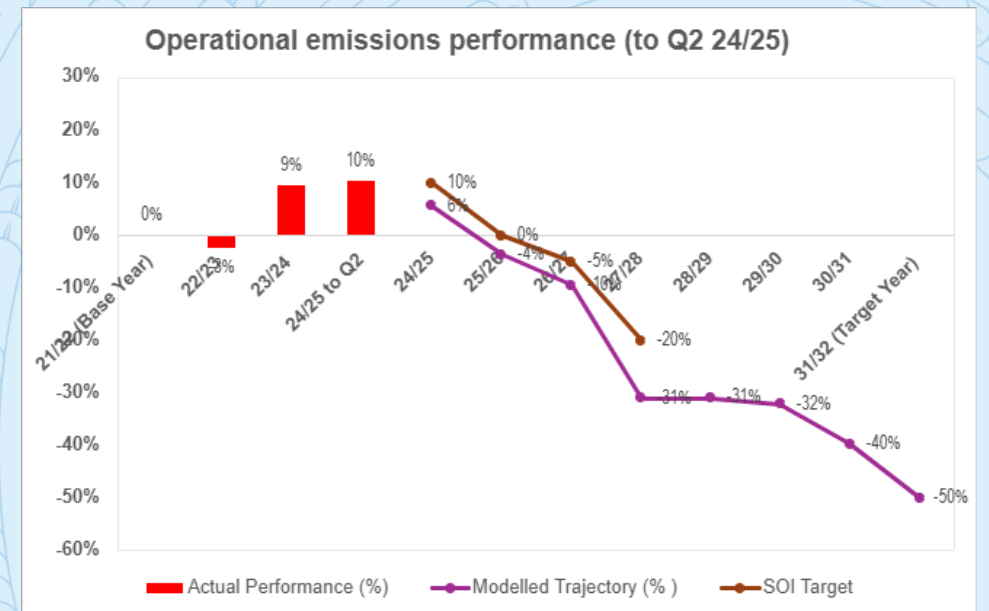
Tracking this financial year

AT's annual gross emissions will be available by the end of August 2025.






The rolling average for operational emissions across Q2 24/25 **increased 10%** against the baseline and 1% from 23/24. **SOI target at risk.**

Embodied emissions (accounting for 56% of the total inventory) **decreased 11% in 2023/24** compared to the 2021/22 baseline. Data for the current financial year will be available after Q4.

Completed development of a business case for initiatives to support uptake of EVs.



Climate Change: Adaptation and Transition

| | Indicators: Quarterly | Indicators: Annually | Tracking this financial year |
|---|---|---|---|
| Adaptation: Existing network ATs existing transport network is increasingly resilient to the physical impacts of climate change | Delivered by AT and AC |  | Climate Adaptation Action Plan has been drafted and will be finalised by year end. Key critical areas highlighted by area managers are being prioritised for asset adaptation planning. AC's Shoreline Adaptation Plans (SAPs) have been completed and collaboration with Council and CCO's is continuing. Progress is on track |
| Adaptation: New network ATs planned works are resilient to physical impacts of climate change (policy applies to all works) | Delivered by AT |  | AT Climate Change Technical Policy applies to all new projects and works – currently on track for large capital works and for renewals and maintenance and developing for smaller capital projects. |
| Adaptation: Operations ATs operations are resilient to the physical risks of climate change | Delivered by AT and 3 rd parties |  | Working with 3 rd party providers to ensure asset and service resilience is in progress. RISK: Progress limited by differing priorities between parties and funding constraints |
| Transition Planning The physical and transition-related impacts of climate change are well understood and effectively managed | Delivered by AT |  | A Climate Transition Plan is being developed to reposition and transform AT's business model in response to climate-related risks and opportunities. It is expected to be completed by Q4 FY24/25 |
| Transition Risks ATs systems and processes ensure that decision making reduces ATs vulnerability to climate related shocks and are in-line with international and domestic policy settings that aim to limit total warming to 1.5°C | Delivered by AT |  | A range of initiatives contribute to this indicator including the environment, social & economic, and adaptation programmes of work, partnership with Auckland Council, climate-related financial reporting requirements, and active management of climate risks. This work is in progress . |



Adaptation and Transition work is tracked through indicators and plans rather than numerical targets

Environment: Biodiversity

Fish Passage

20% (or 7) of rural culverts located on permanent streams have fish passage impediments removed

Delivered by AT



Tracking this financial year

Target is **behind schedule** of delivery of 1 major culvert each year. Design/consenting of the culvert for 23/24 has been completed – construction to progress in 24/25.

Target reported annually in Environmental Scorecard.

Greening our Network

10% increase in pervious surfaces along corridors connecting areas of high ecological value by 2030

Delivered by AC and AT



Green roofs installed on 13 bus shelters as part of the low-profile green roofs trial programme. Sponge city and Making space for water programmes, progressing perviousness is **at risk** with focus of current funding environment.

This target is reported on annually. Council tree planting is slowly increasing over previous years with Council CATR funding. Improved focus by AT projects would support this initiative. While **slow progress**, target is challenging.

12% average canopy cover along Auckland road corridors, with a focus on south Auckland, by 2030 (approx. increase of 100,000 trees)

TNFD*

AT network identifies opportunities for biodiversity net gain – restoring and enhancing nature.

Delivered by AT



TNFD framework **has been piloted** and development of risks and opportunities **has been completed** in June 2024. Further work to be reported in 24/25.



*TNFD: Taskforce for Nature-related Financial Disclosures, building on the Climate-related Financial Disclosure requirements

Environment: Water Quality and Waste Minimisation

| | Data: Quarterly | Data: Annually | Tracking this financial year |
|--|--------------------|--|---|
| Managing Our Discharges Stormwater runoff from 30% (or 28) of Auckland's busiest roads is treated by 2030 | Delivered by AT |  | 1 road to be treated this year with 3-year funding from the RLTP/LTP. Further roads being designed in collaboration with Healthy Waters to maximise spend. Target at risk with current funding constraints. |
| Water Conservation All of AT capital/maintenance projects >\$5 million seek to use rainwater tanks as a non-potable water source | Delivered by AT |  | Most major contractors now use rainwater tanks to provide a non-potable water source. This target is on track . Target reported annually in Environmental Scorecard. |
| Waste Minimisation 50% reduction in waste volume by 2030 (2021 baseline) or 75% of total waste diverted | Delivered by AT |  | This target is making slow progress with maintenance contractor reporting. Maintenance Contracts 72%, Capital Projects 87% . Further capital projects to be brought into waste requirements through procurement in 24/25. Target reported annually in Environmental Scorecard. |
| Recycled Materials The use of recycled materials is actively promoted | Delivered by AT |  | Use of recycled aggregate increased annually through road maintenance contracts. Uptake progress slow via maintenance contracts and need to extend uptake into capital projects. Target reported annually in Environmental Scorecard. |



Social and Economic: Sustainable Procurement

Data:
Quarterly

Data:
Annually

Tracking this financial year

Increased access to contract opportunities

At least 15% of AT's total spend through the supply chain is with Diverse Suppliers and 10% of AT's total spend is with Pakihi Māori **by 2035**. Currently being reviewed by AC as part of SOI process.

Delivered by AT



On track for this year's SOI target to achieve 3% spend with Māori business (Q3 update). \$28.16 million went to Māori-owned businesses directly and through our supply chain, representing 3.03% of our total spend. Steps initiated to support greater focus here after Q2 (Q2 = 2.76%).

Quality employment

100% of relevant suppliers are meeting project-specific quality employment targets for people from under-served communities

Delivered by AT



In first half of FY 2025, spent \$61.2 million with diverse suppliers of all types (5.99% of our influenceable spend). **On track** to achieving our long-term 2034 targets for spend with diverse businesses outlined in our AT Sustainability Strategy.

Human Rights risks

100% of relevant suppliers have completed self-assessment questionnaires, corrective action plans where human rights risks are identified as high

Delivered by AT



Procurement **currently developing** a contract management system which will enable AT to track progress against this target.

Responsible and ethical business practices

100% of AT's direct suppliers annually acknowledge that they are committed to meeting the principles of the AT Supplier Code of Conduct

Delivered by AT



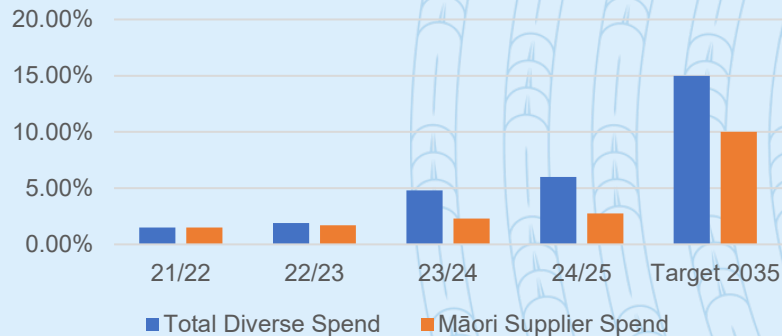
Identified high-risk goods in AT supply chains include CCTV cameras and electric vehicles. With our ethical sourcing partner, Sedex, **currently undertaking** due diligence activities and corrective actions with businesses in those high-risk supply chains .

96.3% spend with suppliers that formally committed to the AT Supplier Code of Conduct – over 96% will be achieved through the procurement process for the bus operations re-contracting. **On track** to achieve 100% by 2034.

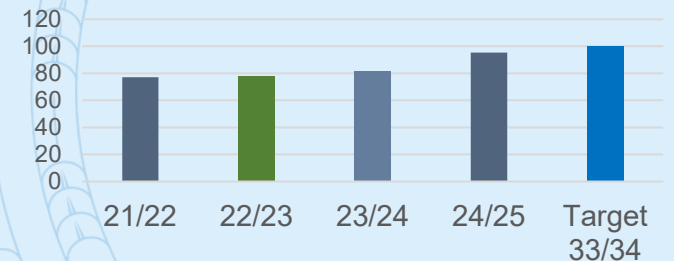


The next iteration of the Sustainable Procurement Action Plan covering 2024 to 2035 has been developed and will go to ELT for endorsement this year.

% Spend on Diverse Suppliers



% Suppliers signed Code of Conduct



Social and Economic: Equity Framework

Improved transport access

Proportion of the population within 500 metres of a Frequent Transit Network bus stop or Rapid Transit Network Station

Delivered by AT

Data:
Quarterly

Data:
Annually



Tracking for this financial year

46% of Auckland region residents live within 500 metres of a FTN stop or RTN station. This metric has been trending upward with new FTN and RTN routes coming into service (e.g. the cross-town bus changes)

Moving with safety and dignity

Customer satisfaction with accessibility of PT, footpaths, and wayfinding information

Delivered by AT



62% of regular and occasional pedestrians were satisfied with the quality of footpaths in the Auckland region (source: Road Satisfaction Survey)

Customer Insights team working to add metrics about accessibility of PT and wayfinding information.

Personal safety

Customer perception of personal safety on PT network and on footpaths in key town centre areas

Delivered by AT



33% of respondents selected 6 through 10 out of 10 on an agreement scale regarding their feeling that Auckland's public transport is safe. On the scale, 0 represented "strongly disagree" and 10 represented "strongly agree" (source: 2024 Brand and Reputation Tracker).

Customer Insights team developing metrics to measure footpath safety perception for key town centre areas.

Transport related harm

Rates of death and injuries from road crashes, exposure to air and noise pollution

Delivered by AT



31 deaths and 558 serious injuries in FY 2023/24. Figures for FY 2024/25 should be available in September 25.

The transport equity analysis within the [Future Connect interactive map](#) has identified clusters of exposure to noise pollution, primarily centred around motorways and major arterial roads. Transport Safety and Partnerships working to secure localised measures of air quality to include in analysis.

