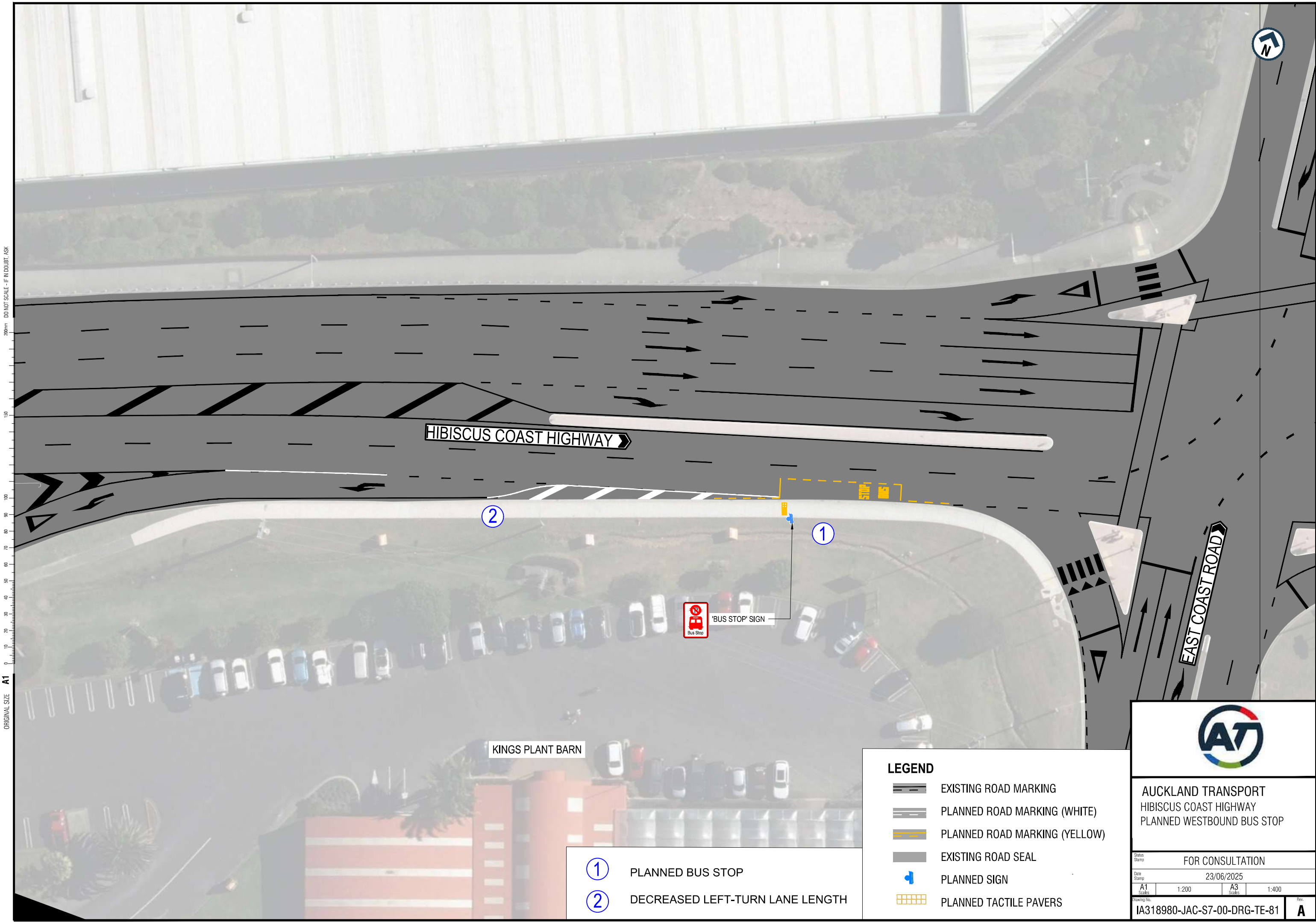


ORIGINAL SIZE A1
0 10 20 30 40 50 60 70 80 90 100 150 200m
DO NOT SCALE - IF IN DOUBT, ASK



HIBISCUS COAST HIGHWAY

EAST COAST ROAD



'BUS STOP' SIGN

KINGS PLANT BARN

①

PLANNED BUS STOP

②

DECREASED LEFT-TURN LANE LENGTH

LEGEND

- EXISTING ROAD MARKING
- PLANNED ROAD MARKING (WHITE)
- PLANNED ROAD MARKING (YELLOW)
- EXISTING ROAD SEAL
- PLANNED SIGN
- PLANNED TACTILE PAVERS



AUCKLAND TRANSPORT
HIBISCUS COAST HIGHWAY
PLANNED WESTBOUND BUS STOP

Status Stamp	FOR CONSULTATION			
Date Stamp	23/06/2025			
A1 Scales	1:200	A3 Scales	1:400	Rev.
Drawing No. IA318980-JAC-S7-00-DRG-TE-81				A