

# Links to GI Oct - Nov Update



**We want to update you on what's been happening on Merton Road, other projects in the area and what's coming up next**

## In short



We've **completed stage 1 of the Merton Road upgrades**, connecting the cycleways between the Apirana Ave/Merton roundabout and the Morrin Road/Merton roundabout.



We've **installed two new crossing on Merton Road**, making it safer for pedestrians and cyclists travelling through the area.



We're making good progress on the Merton East Cycleway and **plan to complete the remaining stages by January 2026. We will not be working the week leading up to and over the Christmas period.**

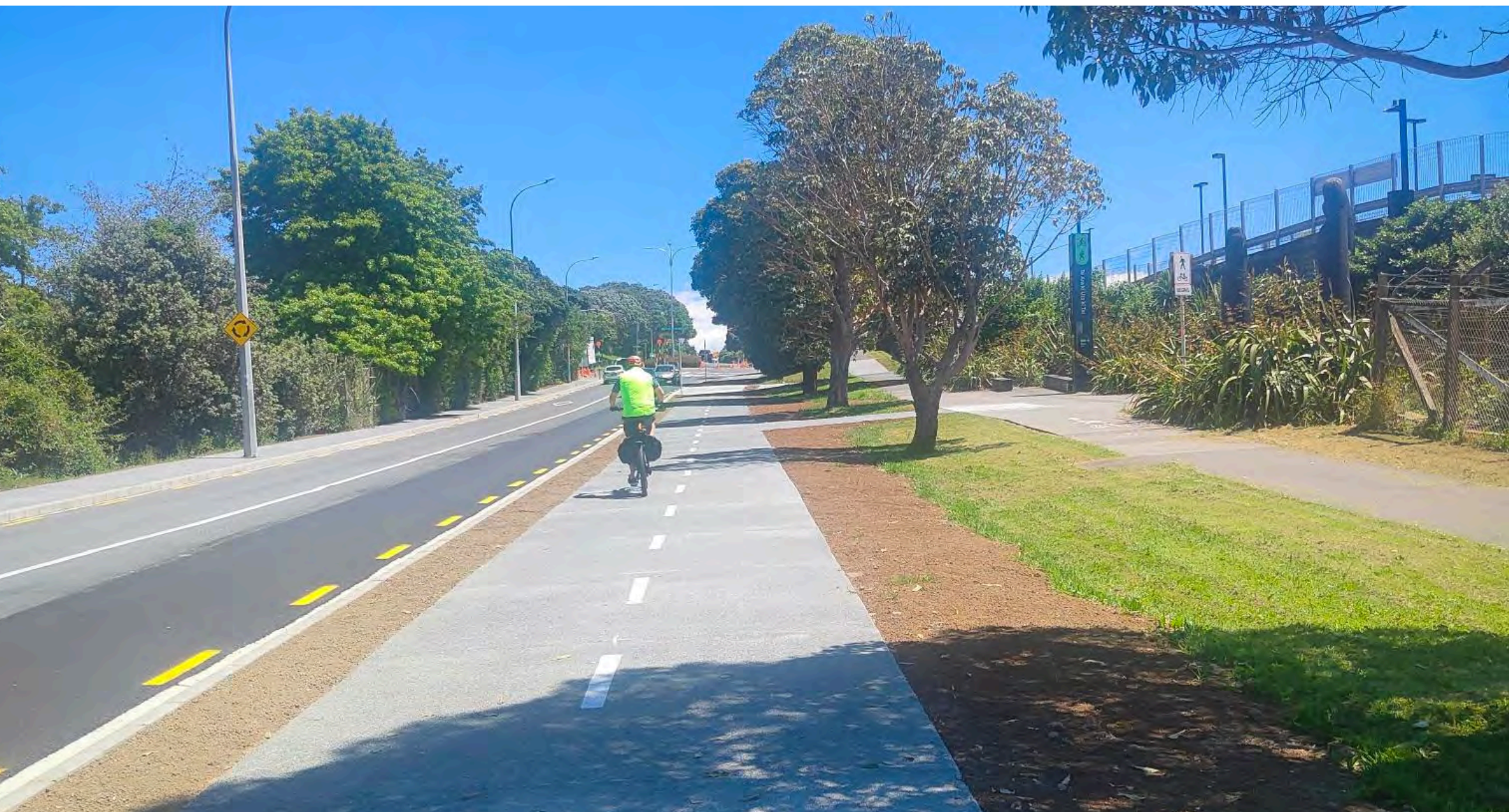


# Links to GI Oct - Nov Update



## **We've completed stage 1 of the Merton East Cycleway**

To support safer, more sustainable travel for Glen Innes residents and Aucklanders, we've built a connecting section of cycleway between the Apirana/Merton roundabout and the Morrin/Merton roundabout.





# Links to GI Oct - Nov Update



## We've installed a new crossings on Morrin Road

To keep our community safe, and to connect people to Glen Innes, we installed a pedestrian crossing on the Morrin Road approach to the Morrin/Merton/Felton Matthew roundabout. The final asphalt resurfacing will be completed in the new year.





# Links to GI Oct - Nov Update



## **We've installed a new crossing near the Glen Innes Station**

We've installed a new crossing on the Merton Road leg of the Apirana/Merton/Line roundabout. This crossing will make it much safer for people to access the Glen Innes Station.





# Links to GI Oct - Nov Update



## **New footpath & retaining wall on Merton Road!**

We've upgraded over 100 metres of footpath, kerb and channel, and installed new tactile pavers. This upgrade significantly improves pedestrian safety and access to the Glen Innes Train Station. We've also installed a new retaining wall to enhance the long-term safety and durability of the rail bridge.







## We're currently working on stage 2 of the Merton East Cycleway

On 27 October, we started stage 2 which involves working at the **Morrin Road approach** of the Merton/Morrin/Felton Matthew roundabout.

Stage 2 will bring new crossings for pedestrians and cyclists, footpath, kerb and channel upgrades, as well as road resurfacing to make your journey safer and smoother.

We expect to complete stage 2 by **mid-November 2025**. Please note, wet weather or unforeseen circumstances may delay the start or finish of the works. If there are any big delays, we will tell you. We appreciate your patience as we carry out these works.

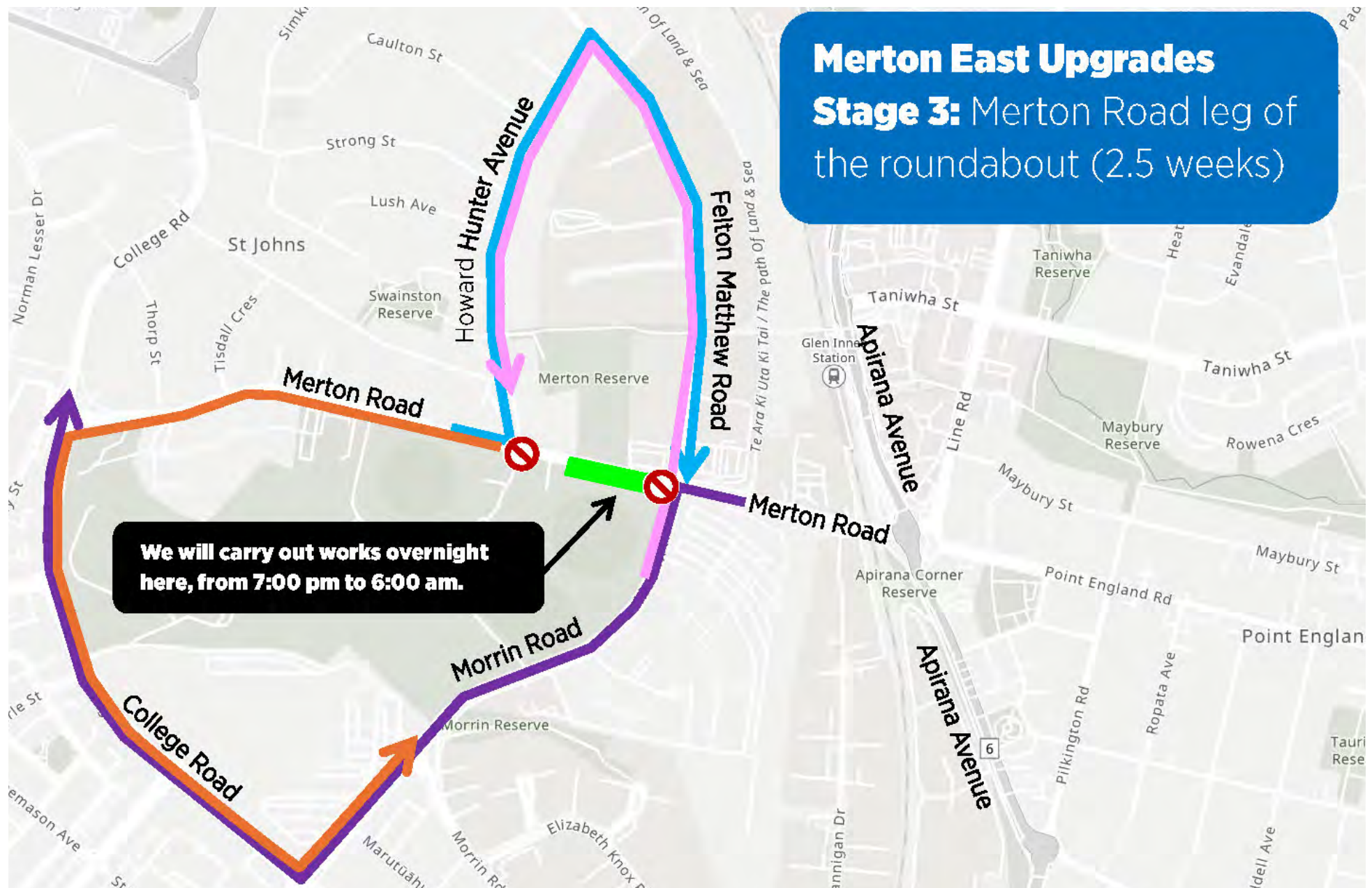
Please visit [\*\*at.govt.nz/links2gi\*\*](https://at.govt.nz/links2gi) for the most up date information.

# Links to GI Oct - Nov Update



## Up next: We plan to start Merton East stage 3 in mid-November 2025

We will deliver new crossings for pedestrians and cyclists, footpaths, kerb and channel upgrades, as well as road resurfacing to make your journey safer and smoother.





# Links to GI Oct - Nov Update



## What else is happening in the area?

We're replacing the level crossings at Glen Innes Station with a new and fully accessible pedestrian bridge.

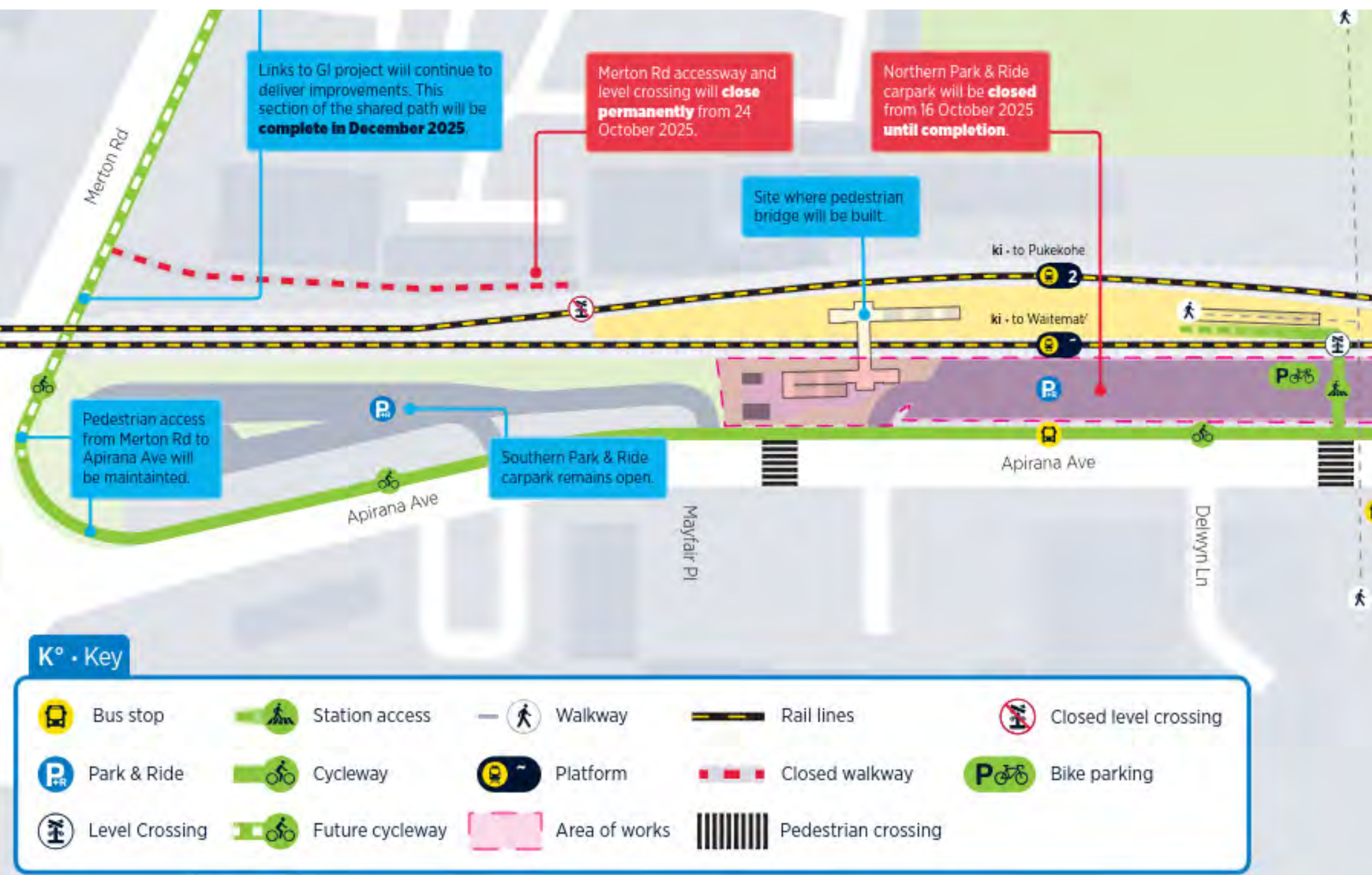




# Links to GI Oct - Nov Update



## New pedestrian bridge at the GI station



For more information about how AT engaged the community, construction dates, and changes to station access, please [visit the Glen Innes Station Access Bridge webpage](#).





## Up next: Christmas break

To keep traffic flowing during the pre-Christmas rush and to give our crew a well deserved break, we will **pause construction from 19 December 2025.**

We will **resume construction from 5 January 2026** to keep the momentum going whilst traffic volumes are lowest, and the weather is at its best!

**Thank you for your patience,**  
The Links to GI Cycleways Team

