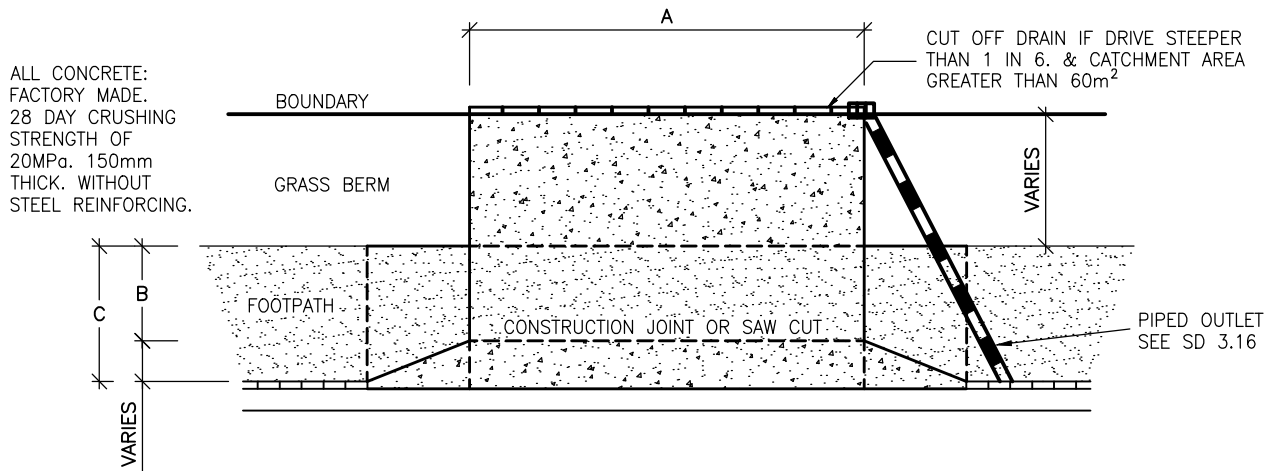


OBLIQUE VIEW

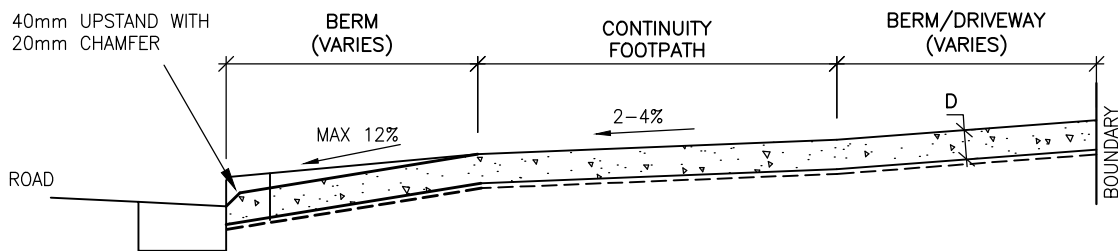
N.T.S.



ALL CONCRETE:
FACTORY MADE.
28 DAY CRUSHING
STRENGTH OF
20MPa. 150mm
THICK. WITHOUT
STEEL REINFORCING.

PLAN

N.T.S.



SECTION

N.T.S.

NOTES:
REFER SD 3.10.02 for dimensions

ENGINEERING
STANDARDS MANUAL

ISSUE
SEPTEMBER 2010

**COMBINATION VEHICLE
CROSSING
(KERBED ROADS)**

STANDARD DETAIL

SD3.10.1