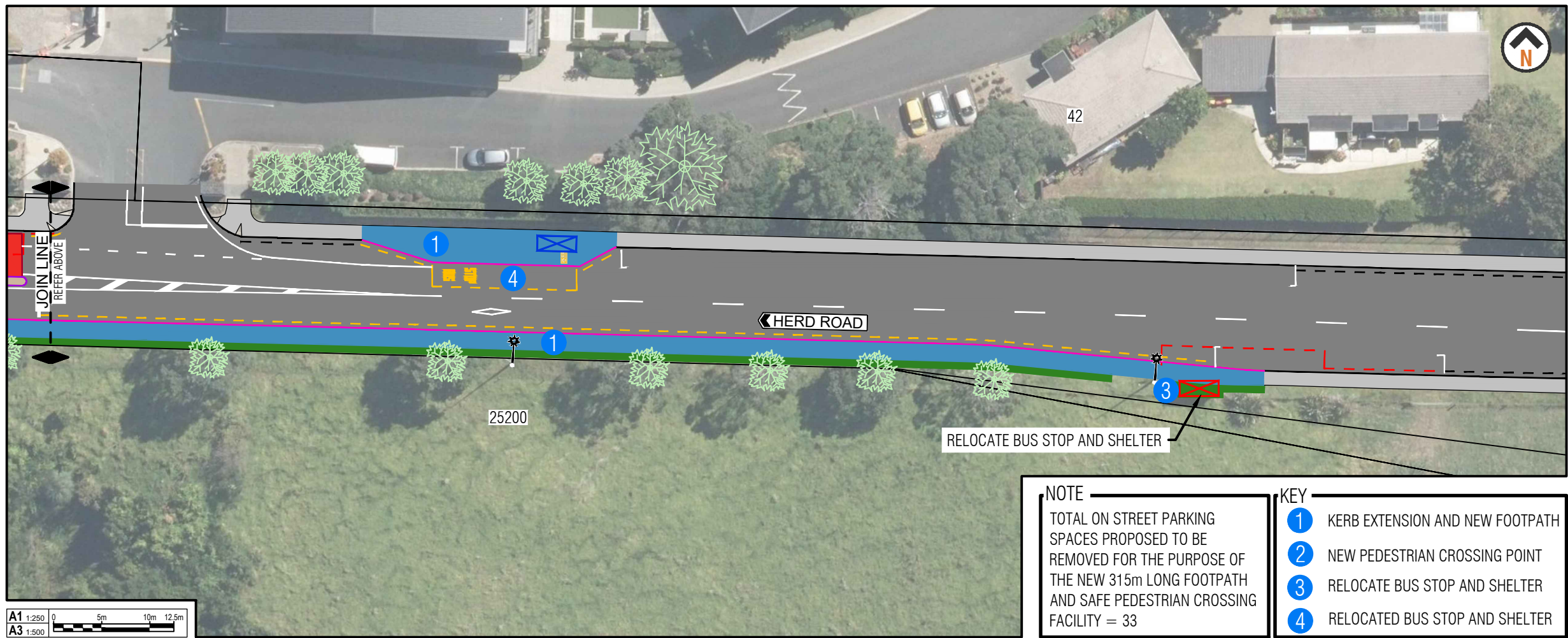
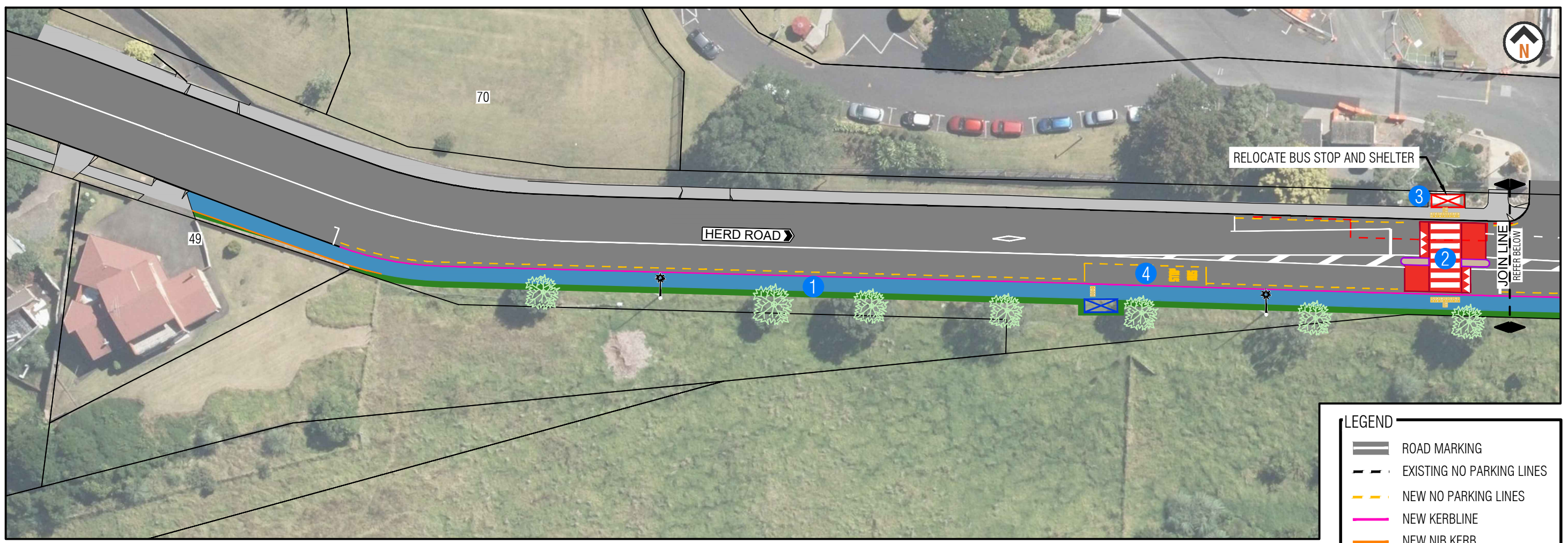


ORIGINAL SIZE A1



LEGEND

- ROAD MARKING
- EXISTING NO PARKING LINES
- NEW NO PARKING LINES
- NEW KERBLINE
- NEW NIB KERB
- NEW GRASS
- NEW FOOTPATH
- NEW ISLAND
- NEW SWEDISH RAISED TABLE
- RELOCATED BUS SHELTER
- BUS STOP BOX TO BE RELOCATED
- RELOCATED BUS STOP BOX
- EXISTING STREET LIGHT
- EXISTING TREE
- NEW TACTILE PAVERS



AUCKLAND TRANSPORT
HERD ROAD FOOTPATH IMPROVEMENTS

Status Stamp: PUBLIC ENGAGEMENT

Date Stamp: 25/03/2025

A1 Scale: 1:250 A3 Scale: 1:500

Drawing No: 2025-AT-021-01_G025 Rev: A

NOTE
TOTAL ON STREET PARKING SPACES PROPOSED TO BE REMOVED FOR THE PURPOSE OF THE NEW 315m LONG FOOTPATH AND SAFE PEDESTRIAN CROSSING FACILITY = 33

KEY

- KERB EXTENSION AND NEW FOOTPATH
- NEW PEDESTRIAN CROSSING POINT
- RELOCATE BUS STOP AND SHELTER
- RELOCATED BUS STOP AND SHELTER

A1 1:250 0 5m 10m 12.5m
A3 1:500