

Construction Update October

Thank you for your support, we know it has been tough on the neighbourhood and the construction seems to be forever but there is an end in sight. This newsletter is to let you know:

- What work is planned for November
- Business Spotlight
- What we did in October

November – What's Up?

Meola Road:

- Final asphalt layer and other works continue.
- Point Chevalier / Meola Road roundabout construction.
- Meola Road / Garnet Road roundabout construction.



Pt Chevalier Road:

- Footpath and cycleway Southern end from Miller Street towards Great North Road.
- Cycleway, footpath Southern end.
- Bus shelter, landscaping, planting and other works continue.
- Line marking and street furniture placement Walker Road - Miller Street.
- Traffic management on Pt Chevalier Road will move from the Western side to the Eastern side from Monday 11 November to complete construction works of the roundabout.



Garnet Road:

- William Denny Avenue closed for continued work on the roundabout.
- Drainage, kerb, footpath, channels and vehicle crossing works continue.

Local Business Spotlight



Hedgehog House Early Learning Centre.

Hedgehog House Early Learning Centre on Point Chevalier is open and currently enrolling.

We are a small centre of 26 children, offering high quality Early Education for children aged 12 months to 5 years of age.

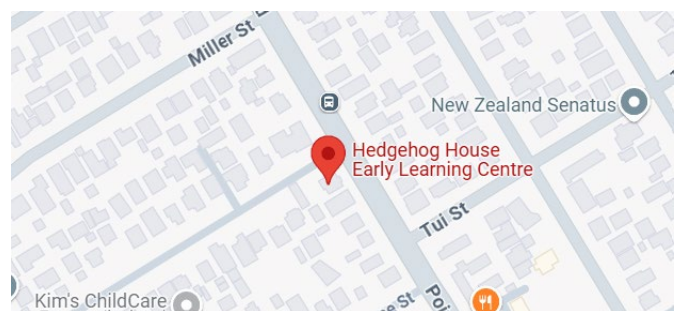
Despite the road work disruptions, we are accessible by road or foot and parking is available in our centre driveway.

We are based at 90 Pt Chevalier Road- parking can also be found on Alberta Street-please follow the detour map <https://at.govt.nz/media/gobfrwux/access-and-vehicle-detour-overview-diagram.pdf> .

Please feel free to drop in for a visit to look around and meet our team whenever suits!

Email hedgehoghouseece@gmail.com

Phone Kiri 02102367974



If you would like your business highlighted in this section, please contact projects@at.govt.nz and we will be in touch.

Unsafe / Illegal Parking

Illegal parking continues to be a concern with a number of drivers parking on the grass berms or cycle lane on Meola Road.

This is very dangerous as they are driving over the cycle lane and footpath areas to gain access.

Footpaths are for pedestrians – not cars!

Cycle lanes are for cyclists use – not cars!

For nearby parking, please use the MOTAT car park, accessible via Motions Road.

To ensure the community can use the footpaths and cycle lanes safely our parking officers will be monitoring and enforcing illegal parking in the area.

We are working with the protect on ways to resolve this.

Please DO NOT park over the footpaths, cycle lanes and berm areas near Seddon Fields or Meola Reef Reserve Te Tokaroa.

Community Notice

Pt Chevalier School Fair Saturday 9 November

Go along and enjoy the fun!

POINT CHEVALIER SCHOOL
RANGI-MATA-RAU
Splash into Summer
SCHOOL FAIR

Saturday 9th November
11 AM - 4 PM

Zero Waste Event
@oscacreative

Raising funds for our awesome pool refurbishment!

- Bouncy Castle
- Market Stalls
- Entertainment
- Live & silent auctions
- White Elephant
- Food Trucks
- Sweet Treats
- Rides and Games

For more information, Follow us on:
FACEBOOK - PTCHEVALIERSCHOOL • INSTA6RAM - PTCHEVSCHOOL • PTCHEV.SCHOOL.NZ

What have we done?

October has been a very busy month on multiple sites with a number of key milestones completed on time:

Meola Road:

- Work between Kiwi Road and the roundabout.
- Planting completed.

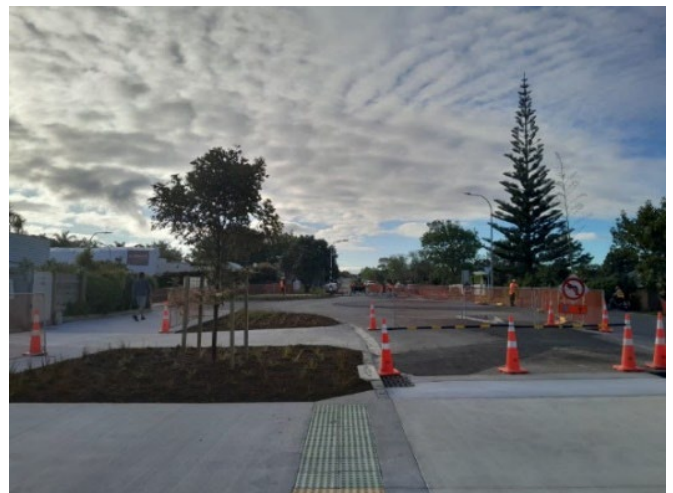


Pt Chevalier Road:

- Footpath and cycle way-Southern end from Tui Street to Great North Road.
- Cycle lane asphalt from Walker Road to 198 Pt Chev Road.
- Initial concrete pour for the new Point Chevalier Road and Meola Road roundabout.

Garnet Road:

- Completion of planting and line marking in shopping area.
- Good progress on Garnet Road and Meola Road roundabout.
- Drainage works underway and continues.



The Good Stuff

Here comes the Fun- family event 19 October

Bike Point Chev reports an amazing turnout for “Here Comes the Fun” at Point Chevalier School on Saturday 19 October. Around 500 locals rolled up to enjoy a springtime bike fest, with visitors on wheels from as far afield as Meadowbank and Māngere Bridge. The event was run by Bike Point Chev’s all-ages volunteer crew, with support from Auckland Transport and kind hosting and logistics from Point Chevalier School.

Little legs were busy all afternoon on the fun smoothie bike, the highly competitive exercycle time trials, and the kids’ obstacle course – all fuelled by a delicious range of snacks on offer from local cafes and vendors, for a perfect picnic afternoon tea. Other popular highlights: bubble-bike rides on the Cycling Without Age trishaw, and the amazing range of family bikes on view, including a “cargo bike petting zoo”.

Free bike WoFs, helmet fit checks, and bike maps offered a confidence boost as we ride into summer and head out to explore the bike paths.

Above all, Here Comes the Fun was a great chance to dust off our wheels and catch up with our neighbours for all kinds of chats. Bikes really do bring people together!

A great success - thank you to all who supported and participated.



All pics are by FramePortraits

The Stages

Please see below for our high-level lookahead. Please note that timeframes are approximate and are dependent on any complications that might arise or unexpected weather events.

Our work programme and dates are always subject to change due to construction progress, clashes with existing unknown services (including asbestos pipes), weather and reprogramming.

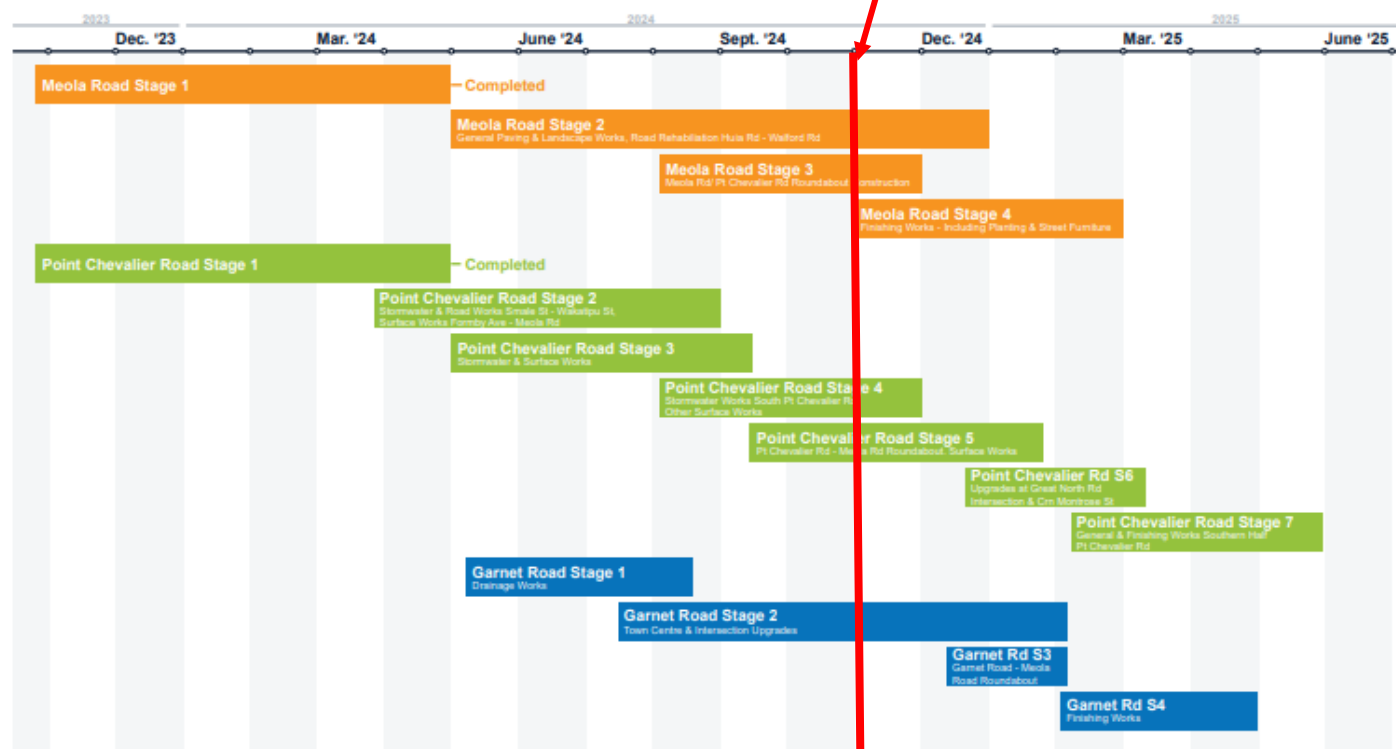
All dates and information are provided as a guide only. Directly affected residents and neighbours will be notified of night work, road closures and construction impacts.

Point Chevalier To Westmere Improvements

Project Staging Overview

Project Started October 2023 | Project Completion End of June 2025

Revision Date: August 2024 | Information and dates subject to change pending weather and site conditions



Meola Road:

- May 2024 to December 2024: Stage 2 paving, landscaping and road repairs from Huia Road to Walford Road
- August 2024 to November 2024: Stage 3 roundabout construction
- November 2024 to February 2025: Stage 4 finishing works.

Pt Chevalier Road:

- March 2024 to August 2024: Stage 2 stormwater and roadworks from Smale Street to Wakatipu Street
- May 2024 to September 2024: Stage 3 stormwater and surface works
- August 2024 to November 2024: Stage 4 stormwater works on the southern part of Point Chevalier Road
- September 2024 to January 2025: Stage 5 Meola Road roundabout and surface works
- December 2024 to March 2025: Stage 6 upgrades at the Great North Road intersection
- February 2025 to May 2025: Stage 7 finishing works on the southern part of Point Chevalier Road.

Garnet Road:

- May 2024 to August 2024: Stage 1 drainage works
- July 2024 to February 2025: Stage 2 town centre and intersection upgrades
- December 2024 to February 2025: Stage 3 Garnet Road to Meola Road roundabout
- February 2025 to April 2025: Stage 4 finishing works.

What to expect throughout construction

There is a lot to do over the next 8 months and it will be disruptive at times, especially for neighbouring properties. As always, we will do our best to minimise the effects of these works on businesses, neighbours, pedestrians, cyclists and motorists.

- Active modes – Pedestrian and cycle access will be maintained.
- People should anticipate slower travel times, delays and congestion when passing through the area.
- At times, residents will have limited access to driveways and there will be no parking available on the road in work areas.
- As work progresses you will notice less disruption and less crews on site.
- **Please note** rubbish bin management by the Dempsey Wood team will be in place for properties within the full road closure area on Meola Road and Point Chevalier Road from PK Superette through to Great North Road.

Sustainability

As part of Dempsey Wood's ongoing commitment to sustainability and environmental responsibility.

We'd like to highlight our innovative approach in reusing excavated materials from various construction activities on the project such as trench excavation and road excavation.

This initiative not only minimises unnecessary waste but also contributes to good sustainable construction practices.

Repurposing Excavated Materials:

During our excavation processes, we often generate significant amounts of material that can be repurposed rather than disposed offsite in land fill.

One of the most effective ways we do this is by utilizing excavated soil and aggregates as the base layer of backfill for berm areas and cycle lanes.



Benefits of This Approach:

1. **Environmental Impact:** By reusing materials, we reduce the need for new resources, lowering our carbon footprint and conserving natural habitats.
2. **Cost Efficiency:** Utilizing soil, rocks or other natural materials helps to decrease transportation costs and overall project expenses, benefiting both our operations and our stakeholders.
3. **Sustainability Goals:** This practice aligns with our broader sustainability objectives, showcasing our dedication to innovative construction methods that promote circular economy principles.
4. **Enhanced Infrastructure:** The use of recycled materials can improve the structural integrity of cycle lanes, providing a robust foundation that supports safe and efficient transportation for cyclists.

As we move forward with our projects, we will continue to seek opportunities to enhance our material reuse strategies, reinforcing our commitment to the environment.

Next Month: Works Congestion

Support Through Construction

For general AT or project enquiries, email projects@at.govt.nz or phone 09 930 5090.

If you have any questions or concerns about construction, please contact Dempsey Wood on 0800 782 429 or email PtC2W@dempseywood.co.nz.

Visit AT's website to learn more about the [project](#).



Potholes!!

Auckland Transport maintenance contractors have an existing pro-active roving programme checking the network for potholes and other repairs required.

However, if you notice a pothole or other issue that needs fixing, please call 09 3553553 or log via the Report a pothole page: [Report damage to sealed road surface](#)

Most Excellent Artwork from Gien, Room 5 St Francis School



If you have received this update from a friend and would like to receive it directly to your mailbox each month, please email projects@at.govt.nz to sign up.

We thank you for your continued patience and support – it has been and is appreciated by our team.

Ngā mihi,

The Pt Chevalier to Westmere Improvements Project Team