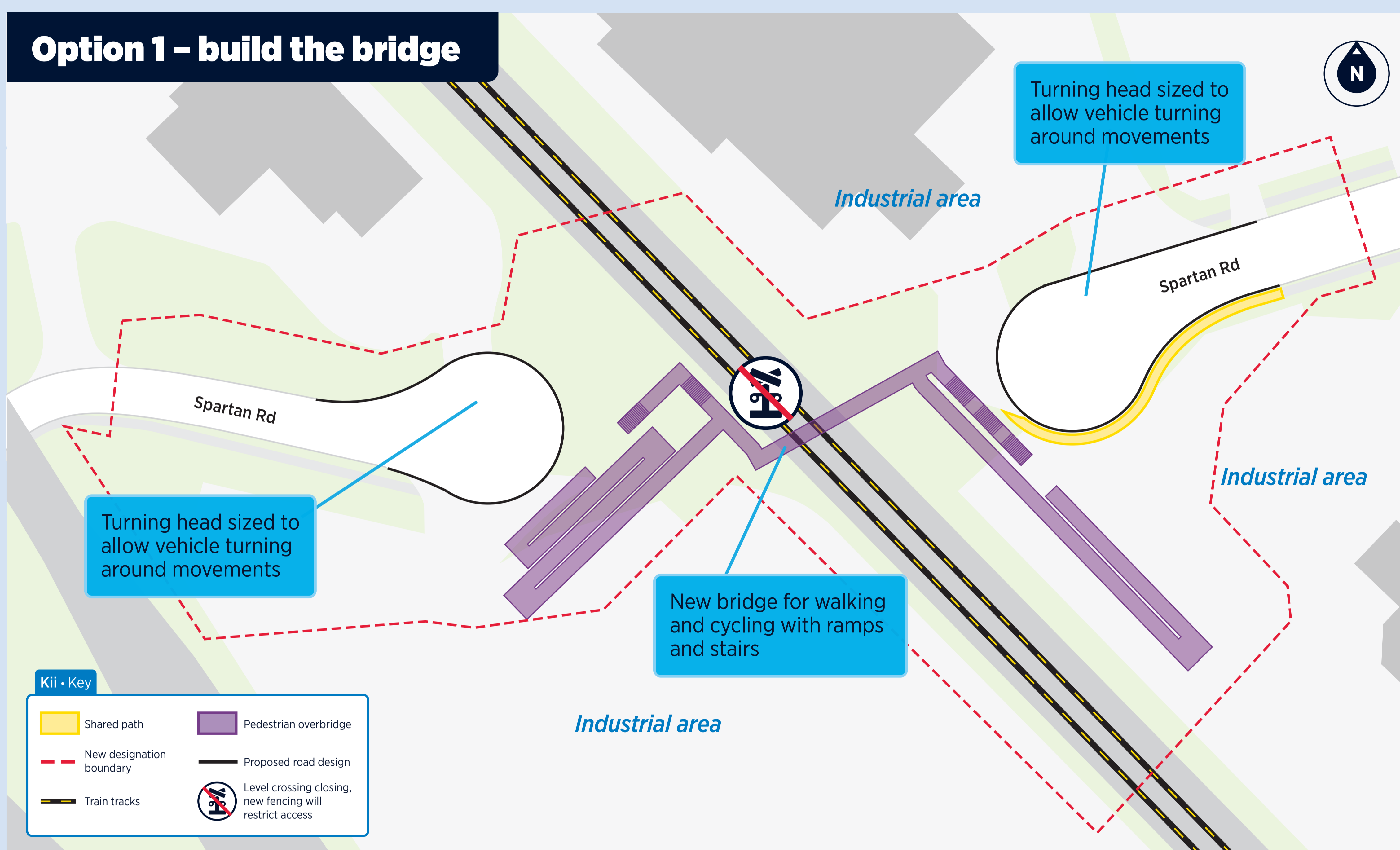


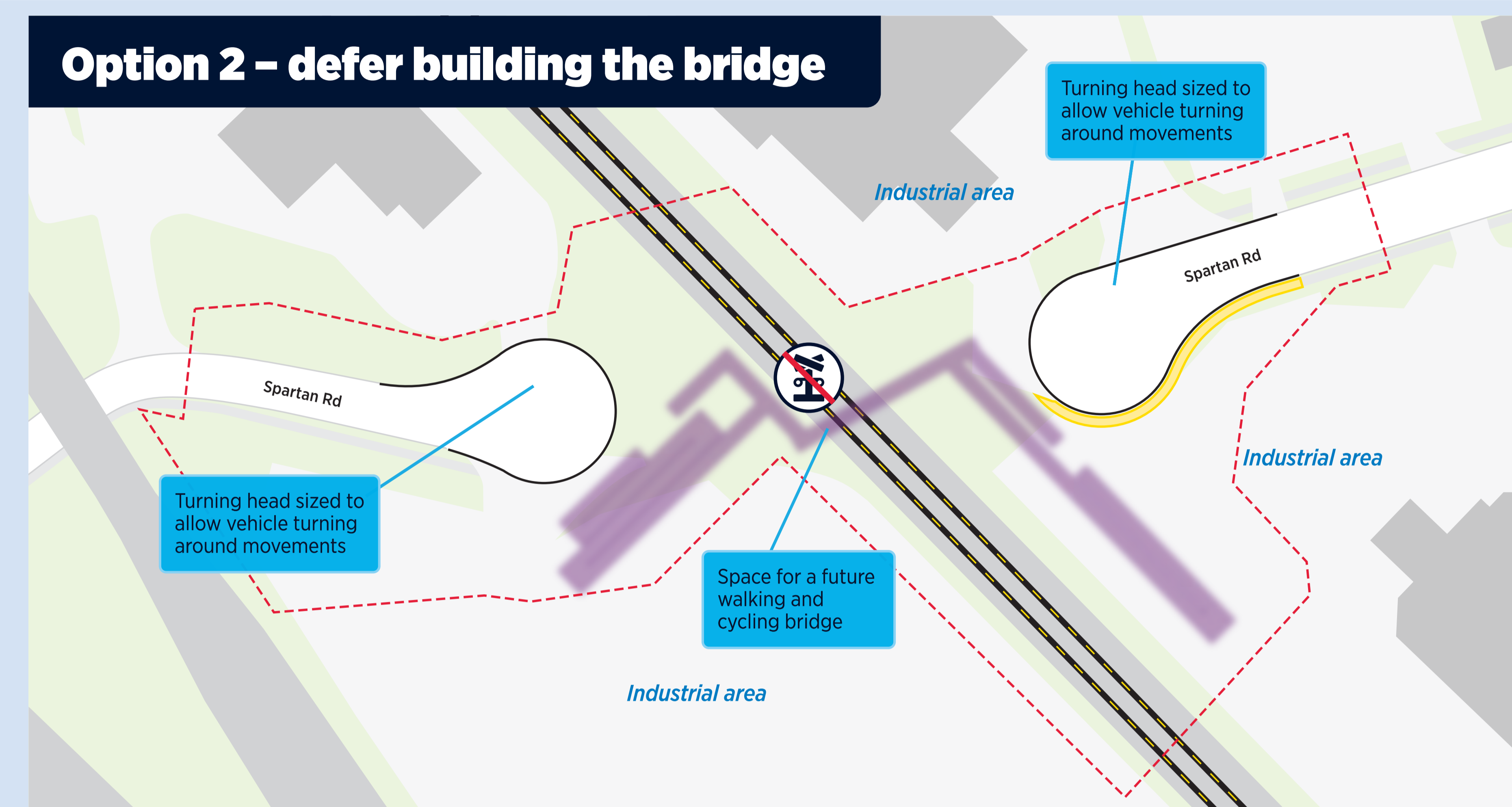


Spartan Road

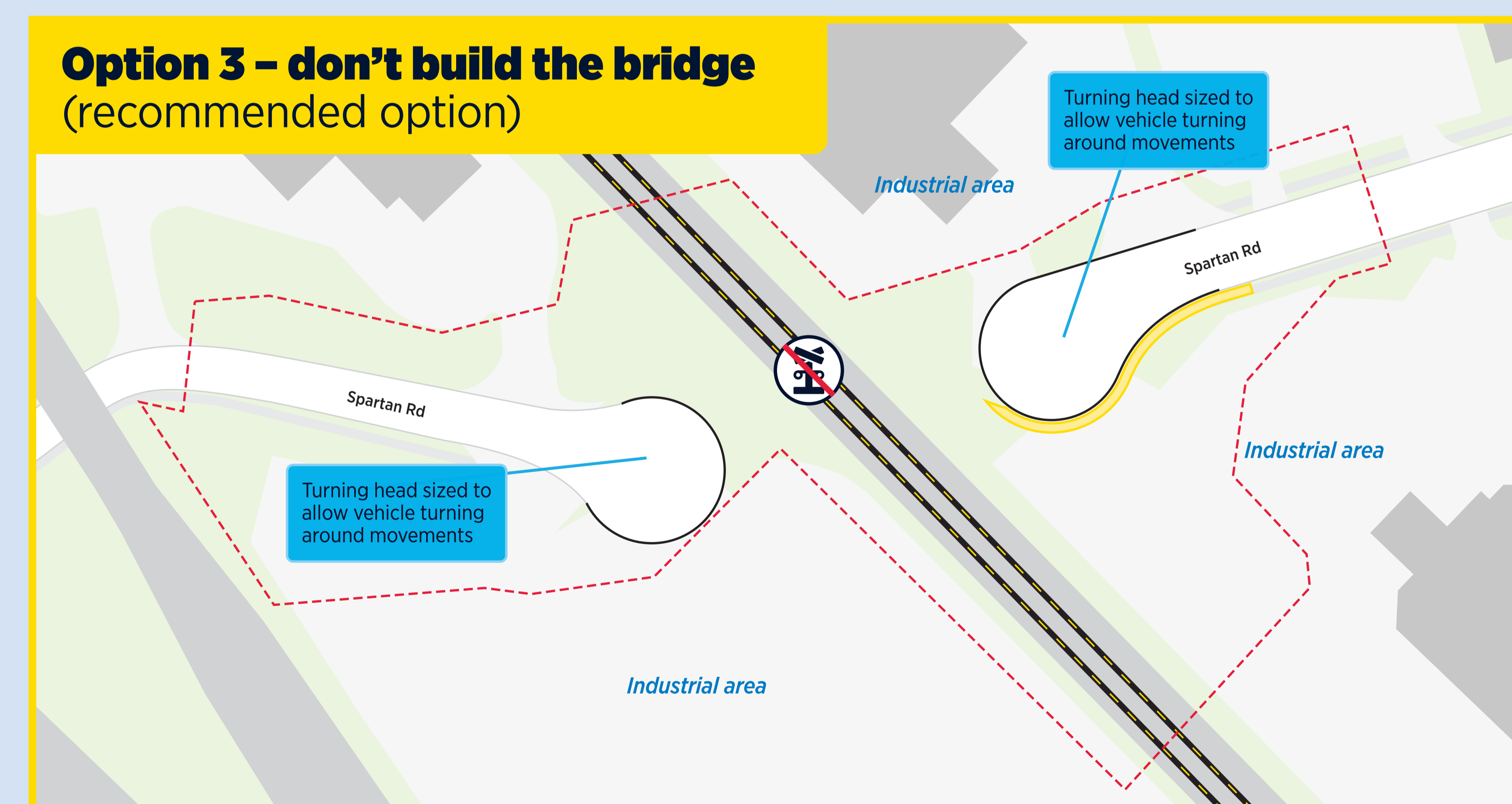
Option 1 – build the bridge



Option 2 – defer building the bridge



Option 3 – don't build the bridge (recommended option)



Close the level crossing but recommend not building the new bridge planned for walking and cycling

Why?

- Low number of pedestrians and cyclists now and expected in the future
- Constraints with the SH1 off-ramp
- Impact on major utilities with cost implications
- Industrial environment/heavy vehicles
- New Manuia Road bridge will offer a safer alternative for people walking and cycling
- No future residential growth planned

Three options

Option 1 – build the bridge

Build the walking and cycling bridge as planned

Option 2 – defer building the bridge

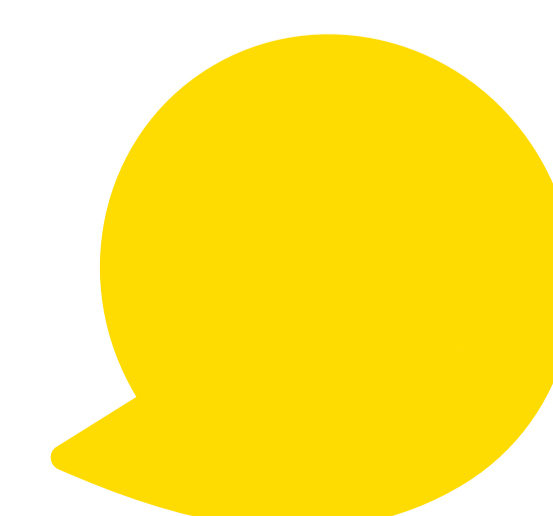
Protect the land for the bridge to be built in the future

Option 3 – don't build the bridge

Remove it from the project plan altogether and utilise the funds in another part of the project. This is the recommended option



We're seeking your feedback now



Have your say by

26 June 2026

