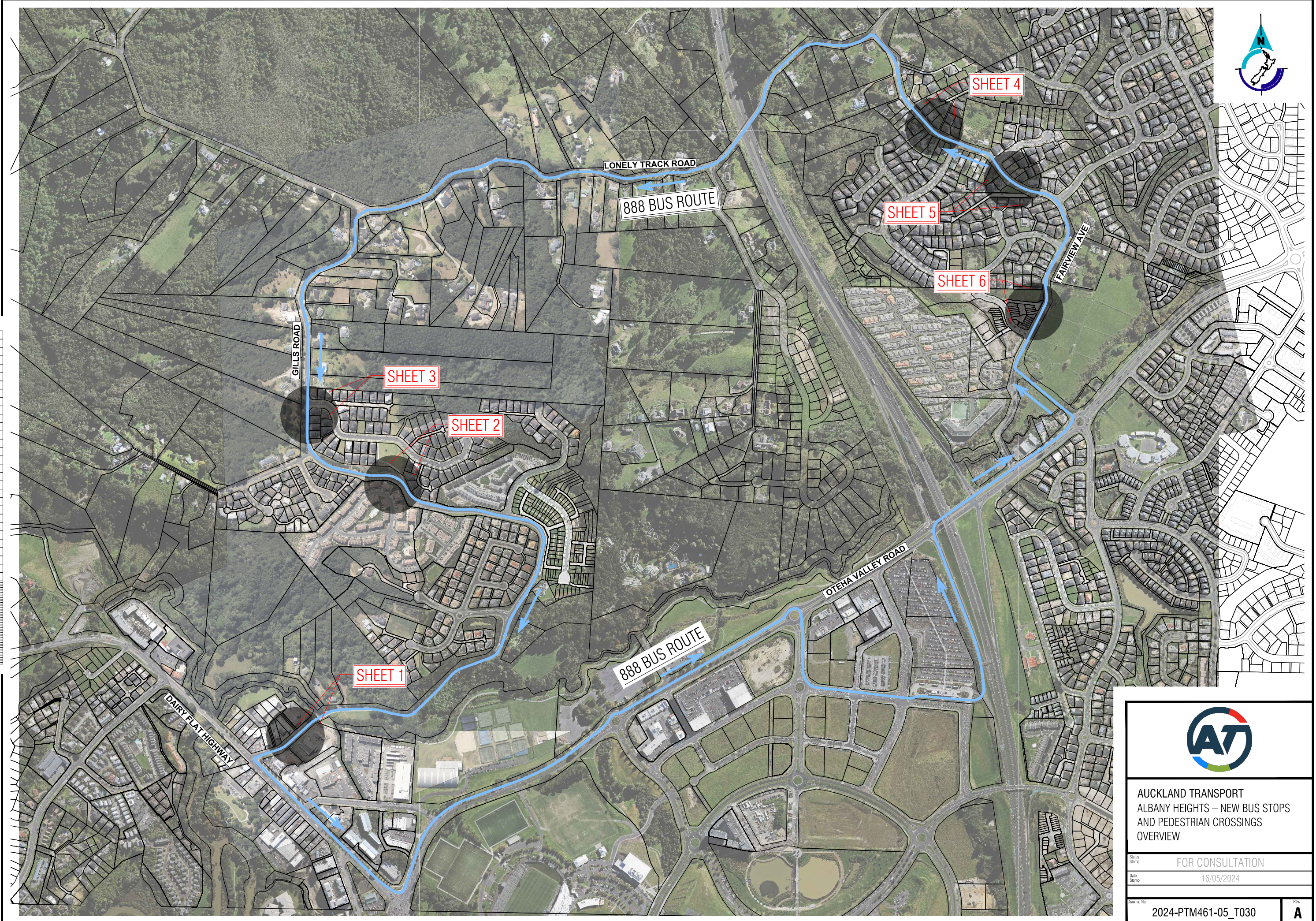




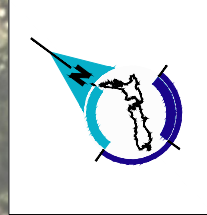
ORIGINAL SIZE A1
200mm
150
100
90
80
70
60
50
40
30
20
10
0



AUCKLAND TRANSPORT
ALBANY HEIGHTS – NEW BUS STOPS
AND PEDESTRIAN CROSSINGS
OVERVIEW

Status Stamp FOR CONSULTATION
Date Stamp 16/05/2024

Drawing No. 2024-PTM461-05_T030 Rev. A



200mm
150
100
90
80
70
60
50
40
30
20
10
0
ORIGINAL SIZE A1
DO NOT SCALE - IF IN DOUBT, ASK



TACTILE PAVERS ARE YELLOW GUIDANCE NON-SLIP PAVING MARKERS TO HELP VISUALLY IMPAIRED PEOPLE FIND THEIR WAY TO THE FRONT DOOR OF A BUS ON A BUS STOP.

- 15** NEW PEDESTRIAN CROSSING & REFUGE ISLANDS
- 16** EXISTING PRAM CROSSING AND TACTILE PAVERS
- 17** NEW PRAM CROSSING AND TACTILE PAVERS
- 18** NEW BUS STOP ROAD MARKING

SUMMARY OF NET CARPARK LOSSES

NORTHBOUND: 11 SPACES
SOUTH BOUND: 11 SPACES
NET CARPARK LOSSES: 22 SPACES

LEGEND

- EXISTING KERBLINE / ROADMARKING
- NEW ROADMARKING
- NEW KERBLINE
- NEW NO STOPPING LINE
- NEW ISLAND
- NEW FOOTPATH / CONCRETE HARDSTAND
- EXISTING SIGN
- NEW / RELOCATED SIGN
- NEW WARNING TACTILE PAVERS
- NEW DIRECTIONAL TACTILE PAVERS
- NEW PRAM RAMP
- NEW BUS SHELTER



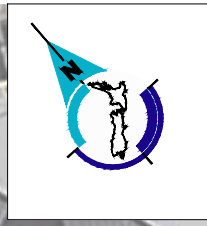
AUCKLAND TRANSPORT
ALBANY HEIGHTS – NEW BUS STOPS
AND PEDESTRIAN CROSSINGS
SHEET 4

FOR CONSULTATION

Date Stamp 16/05/2024

Drawing No. 2024-PTM461-05_T034

Rev. **A**



ORIGINAL SIZE A1

200mm

150

100

90

80

70

60

50

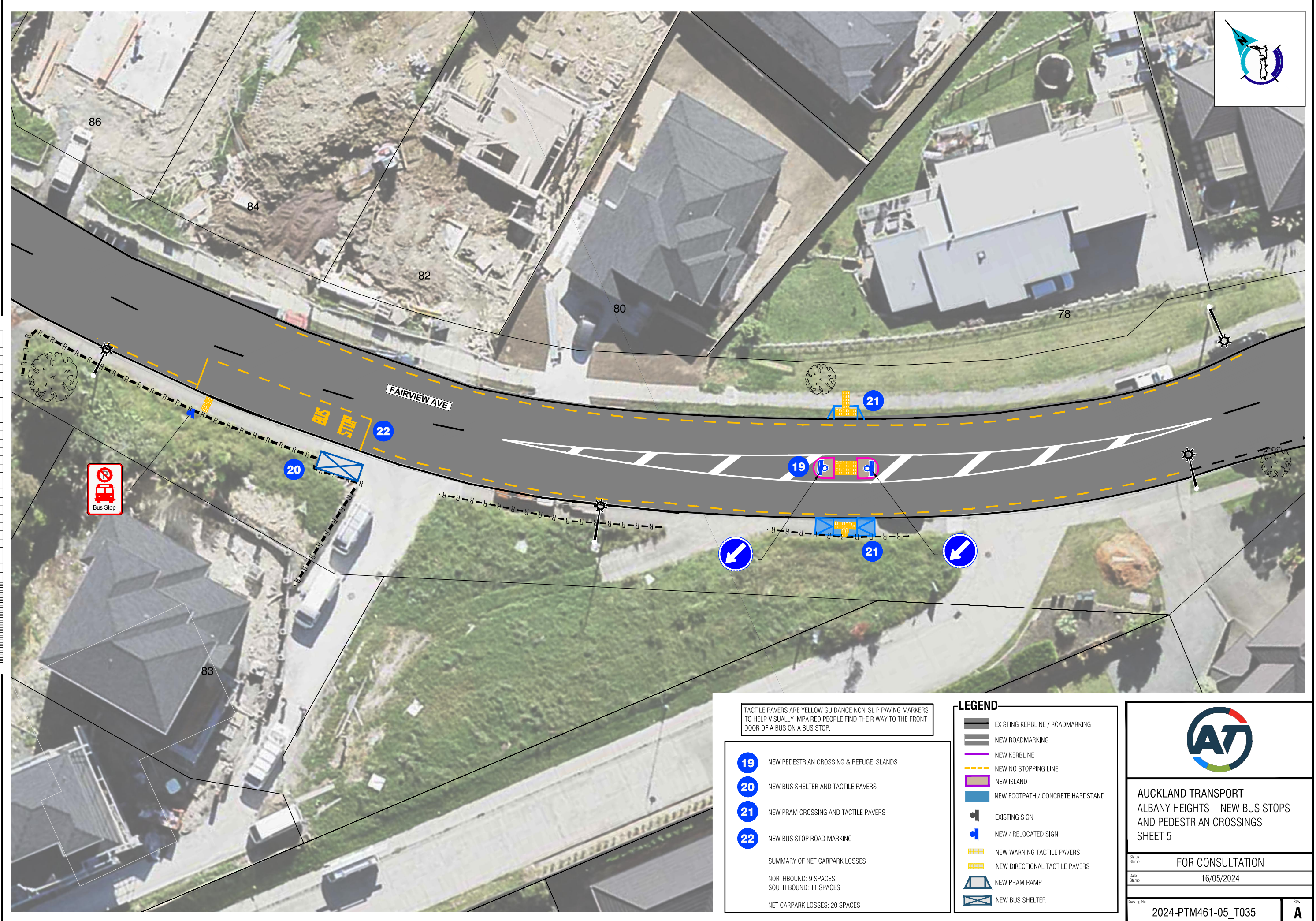
40

30

20

10

0



TACTILE PAVERS ARE YELLOW GUIDANCE NON-SLIP PAVING MARKERS TO HELP VISUALLY IMPAIRED PEOPLE FIND THEIR WAY TO THE FRONT DOOR OF A BUS ON A BUS STOP.

- 19** NEW PEDESTRIAN CROSSING & REFUGE ISLANDS
 - 20** NEW BUS SHELTER AND TACTILE PAVERS
 - 21** NEW PRAM CROSSING AND TACTILE PAVERS
 - 22** NEW BUS STOP ROAD MARKING
- SUMMARY OF NET CARPARK LOSSES
- NORTHBOUND: 9 SPACES
SOUTHBOUND: 11 SPACES
- NET CARPARK LOSSES: 20 SPACES

LEGEND

	EXISTING KERBLINE / ROADMARKING
	NEW ROADMARKING
	NEW KERBLINE
	NEW NO STOPPING LINE
	NEW ISLAND
	NEW FOOTPATH / CONCRETE HARDSTAND
	EXISTING SIGN
	NEW / RELOCATED SIGN
	NEW WARNING TACTILE PAVERS
	NEW DIRECTIONAL TACTILE PAVERS
	NEW PRAM RAMP
	NEW BUS SHELTER

Auckland Transport

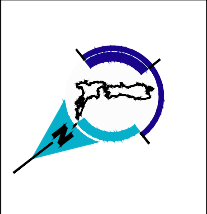
ALBANY HEIGHTS – NEW BUS STOPS AND PEDESTRIAN CROSSINGS SHEET 5

FOR CONSULTATION

Date Stamp: 16/05/2024

Drawing No: 2024-PTM461-05_T035

Rev: **A**



ORIGINAL SIZE A1
20mm
DO NOT SCALE - IF IN DOUBT, ASK



TACTILE PAVERS ARE YELLOW GUIDANCE NON-SLIP PAVING MARKERS TO HELP VISUALLY IMPAIRED PEOPLE FIND THEIR WAY TO THE FRONT DOOR OF A BUS ON A BUS STOP.

- 23** NEW BUS SHELTER
- 24** EXISTING FOOTPATH TO BE RECONSTRUCTED AND WIDENED
- 25** NEW BUS STOP ROAD MARKING

SUMMARY OF NET CARPARK LOSSES

NORTHBOUND: 7 SPACES
SOUTH BOUND: 0 SPACES

NET CARPARK LOSSES: 7 SPACES

LEGEND

- EXISTING KERBLINE / ROADMARKING
- NEW ROADMARKING
- NEW KERBLINE
- NEW NO STOPPING LINE
- NEW ISLAND
- NEW FOOTPATH / CONCRETE HARDSTAND
- EXISTING SIGN
- NEW / RELOCATED SIGN
- NEW WARNING TACTILE PAVERS
- NEW DIRECTIONAL TACTILE PAVERS
- NEW PRAM RAMP
- NEW BUS SHELTER
- REMOVED / RELOCATED TREE



**AUCKLAND TRANSPORT
ALBANY HEIGHTS – NEW BUS STOPS
AND PEDESTRIAN CROSSINGS
SHEET 6**

Status Stamp: **FOR CONSULTATION**

Date Stamp: 16/05/2024

Drawing No. 2024-PTM461-05_T036

Rev. **A**