

Waiheke Island - Matiatia Wharf

Retail Leasing Opportunities – Request for Proposals (RFP)

Visual Attachment – to be read in conjunction with the RFP document

Procurement Number: 754-26-031-GS

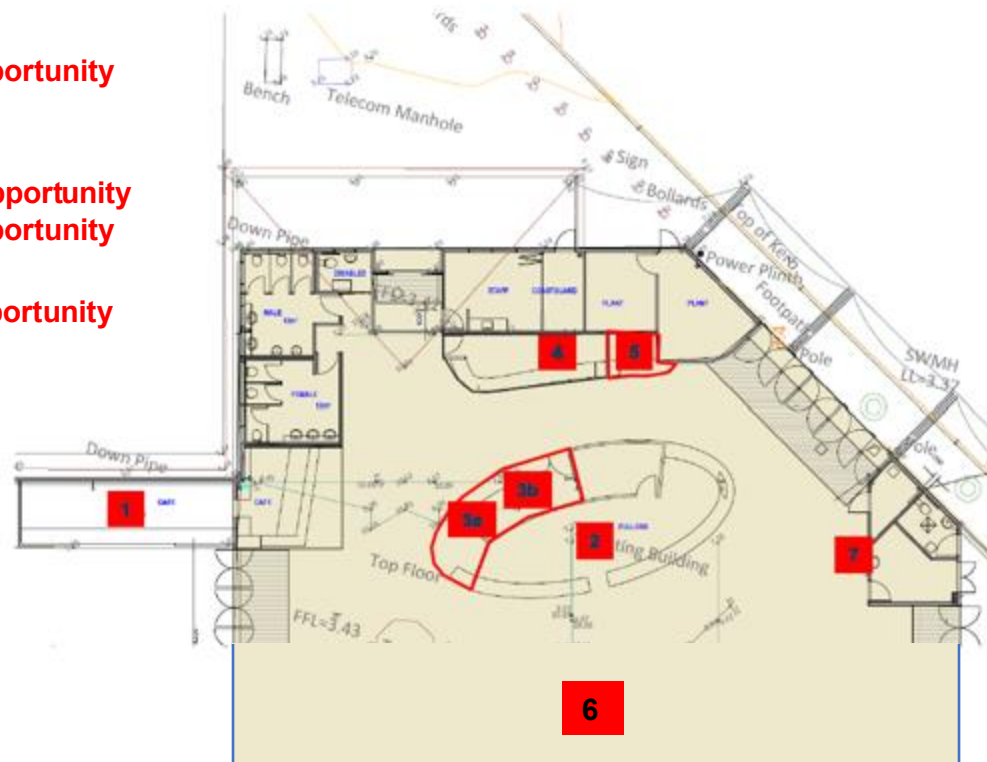


Matiatia Wharf Tenancy Configuration

Matiatia Wharf - Tenancy Configuration

Unit:

- 1** = Unit 1 EOI Opportunity
- 2** = Fullers
- 3a** = Waiheke Tourism
- 3b** = Unit 3B EOI Opportunity
- 4** = Unit 4 EOI Opportunity
- 5** = E-Locker
- 6** = Unit 6 EOI Opportunity
- 7** = ATM - Westpac



Unit 1 Matiatia Ferry Terminal



- Approx 38sqm space
- Existing lease expiry March 2026
- Attached picture is an example of previous fitout
- Continued on following slide(s)







Unit 3B Matiatia Ferry Terminal



- Approx 12sqm space
- Existing lease expiry December 2025
- Attached picture is an example of previous fitout





Unit 4 Matiatia Ferry Terminal



- Approx 13.5 sqm space
- Existing lease expiry June 2025
- Utilities connections: electricity
- Attached picture is an example of previous fitout





Unit 6 Matiatia Ferry Terminal



- Approx 13.5 sqm space
- Existing lease expiry December 2025
- Utilities connections: electricity
- Attached picture is an example of previous fitout







Thank you

We look forward to your proposal.

