



Auckland Transport Open Board Meeting – 25 February 2025

Agenda item 14.0

Public presentation: Safety on inter-regional connector roads and major roads in Rodney

By Geoff Upson

Safety on inter-regional connectors and major rural roads

Prepared by Geoff Upson on behalf of road users.

Millwater

Share

← 142 Wainui Rd
Silverdale, Auckland
Google Street View
Mar 2012 See latest date



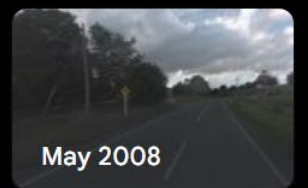
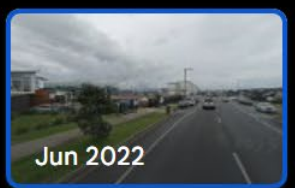
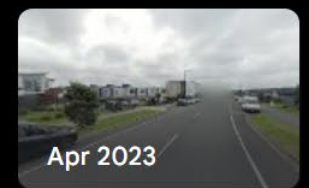
Millwater

Share

← 142 Wainui Rd
Silverdale, Auckland

Google Street View

Jun 2022 See latest date



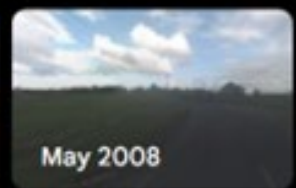
Millwater

Share

← 142 Wainui Rd
Silverdale, Auckland

Google Street View

Mar 2012 See latest date



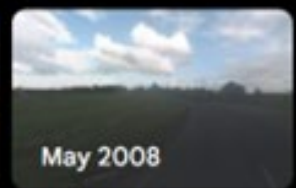
Millwater

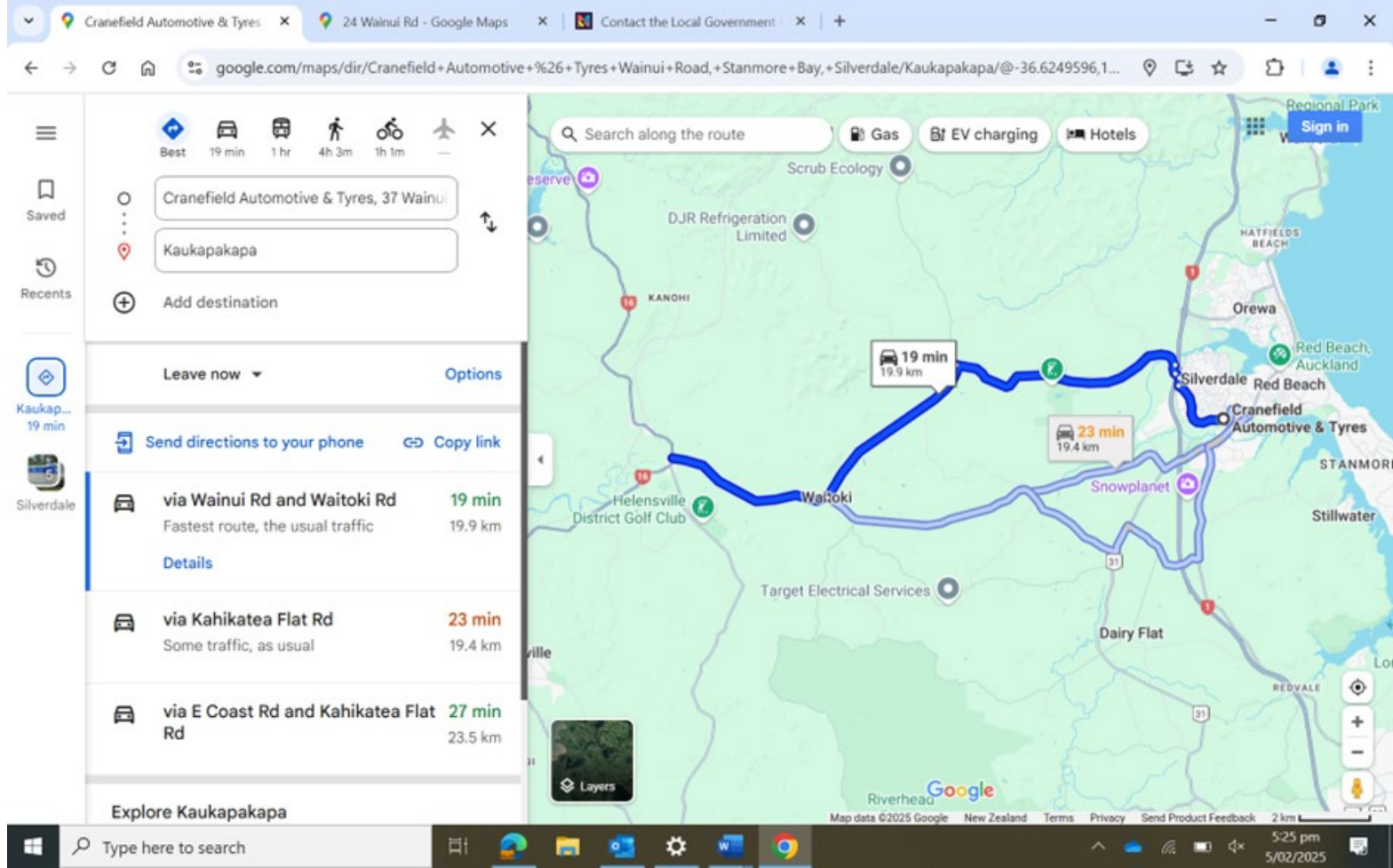
Share

← 142 Wainui Rd
Silverdale, Auckland

Google Street View

Apr 2023 See latest date





A trip which would have been around 12-13 minutes now takes 19 minutes due to development.



Same shop, different surroundings 5 minutes longer travel time.



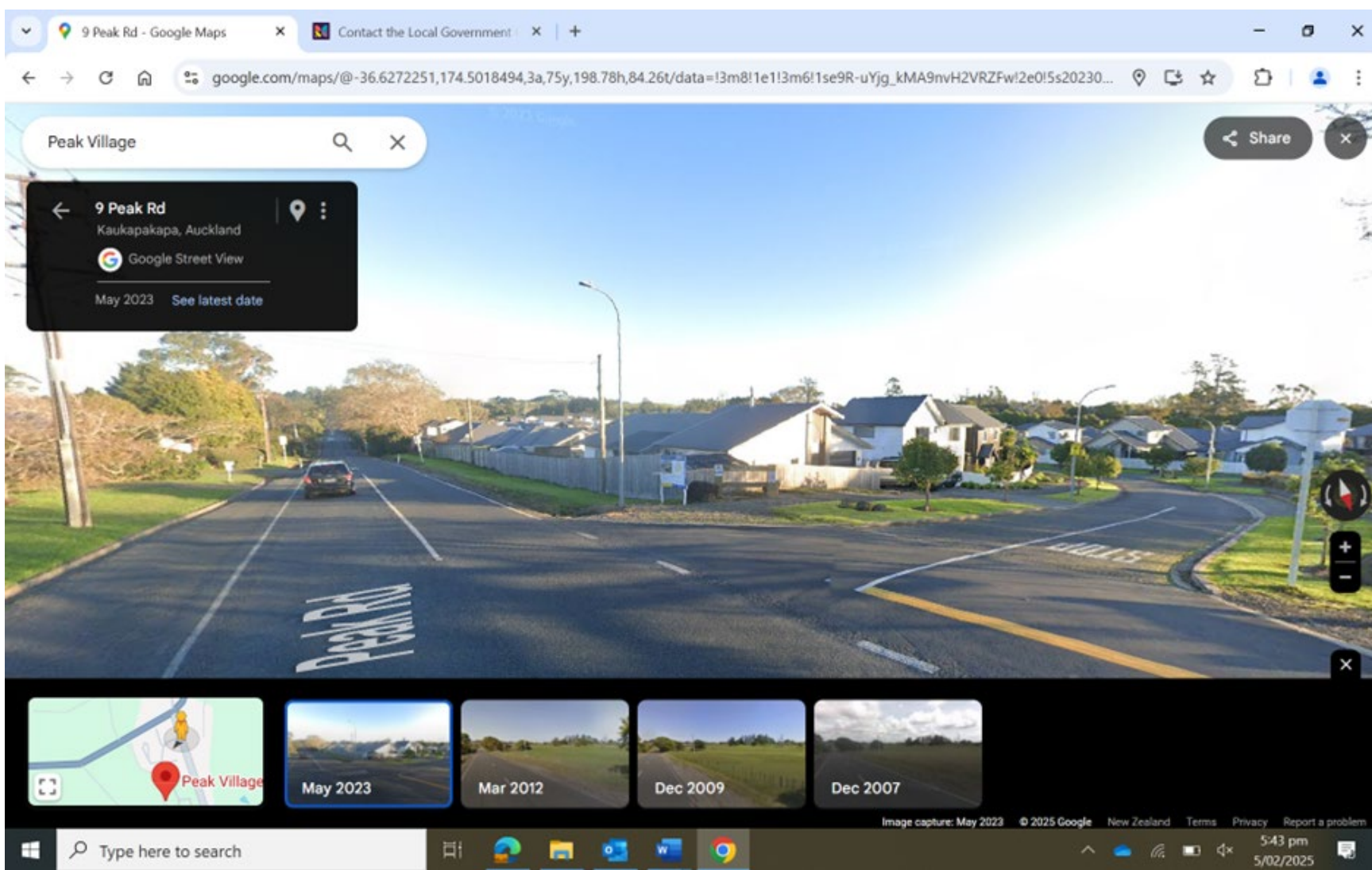
5 minutes per trip = 10 minutes extra per return trip

If for example this is your route to work that's 50+ minutes per week or over 43 hours extra time on the road per year just to let developers use the existing highways.

What is the issue?

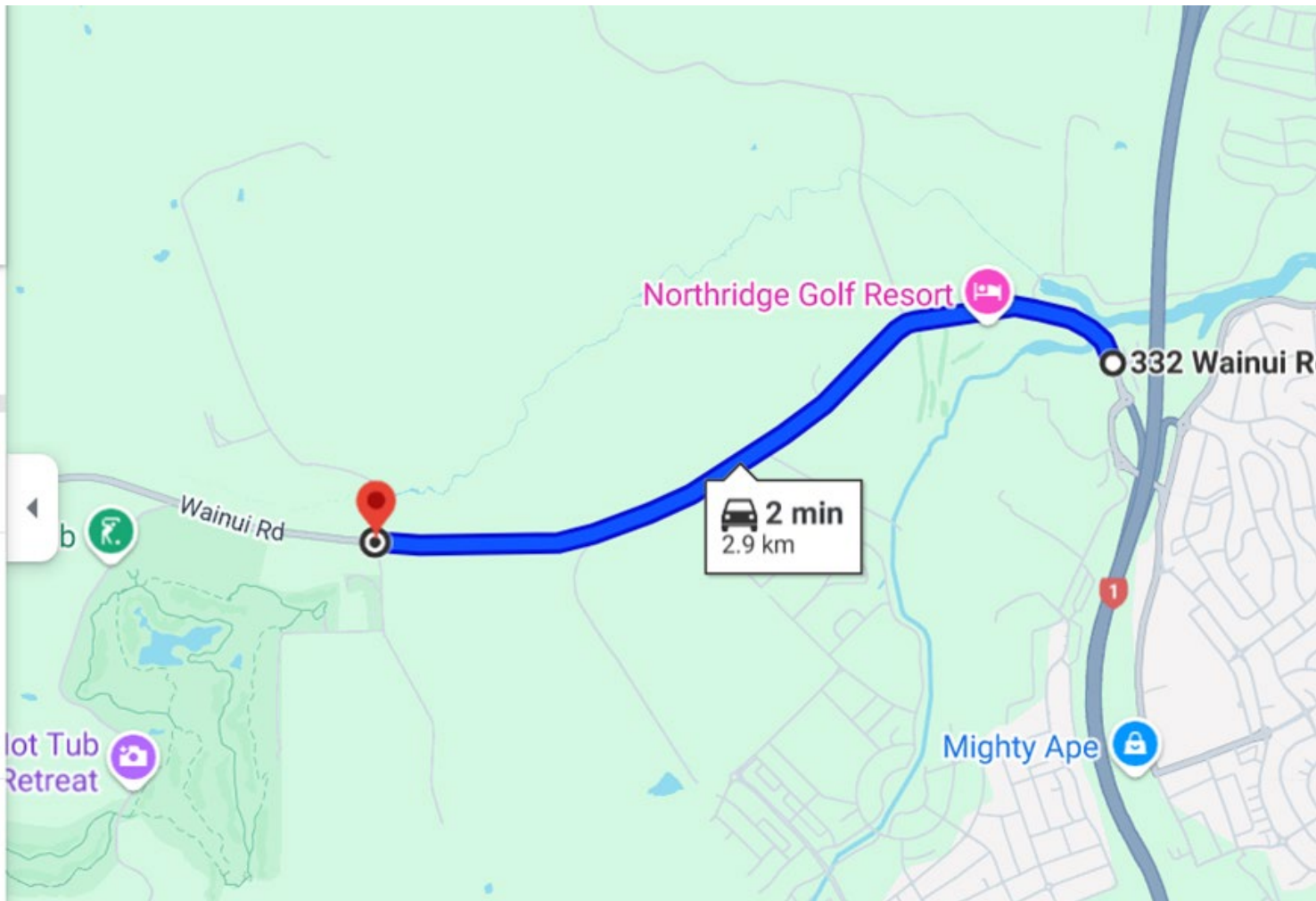
Development needs to happen

But why do we need to build the houses onto rural roads which will negatively impact the road users?



Here's a development built safely next to a major inter regional route between Auckland and Northland

Note: zero driveways onto the inter regional connector.



Future development of green fields will see another 3km of road which is currently safe for all road users with an appropriate speed limit of 100km/h get changed to urban with houses along the side of it.

This is Wainui road, the same road in the first 4 slides

The farmers, inter regional, regional and local travel will still need to use this road including access to two Quarries and as you know Quarries are hard to keep open in Auckland but we are reliant on the material for construction and maintenance.

12 **Notice of Motion - Geoff Upson - Designation of vital transport corridors as 'Regional Strategic Roads'**

Resolution number RD/2024/82

MOVED by Member G Upson, seconded by Member C Smith:

That the Rodney Local Board:

a) **tono / request that Auckland Transport:**

- i) **designate vital transport corridors, within the Rodney Local Board area or connecting the Rodney Local Board area, as 'Regional Strategic Roads' or other suitable designation which will provide protection for road users into the future and provide a higher level of priority for maintenance and resilience work**
- ii) **designate some of the most important and essential transport corridors within the Rodney Local Board area or connecting the Rodney Local Board area, as 'Limited Access Roads' the same as the state highway network**
- iii) **give priority to the transport corridors with high traffic volumes within the Rodney Local Board area or connecting the Rodney Local Board area, or which serve as detour routes when the state highway network is closed or congested.**

A division was called for, voting on which was as follows:

<u>For</u>	<u>Against</u>	<u>Abstained</u>
Member M Carmichael	Chairperson B Bailey	
Member M Dennis		
Member T Holdgate		
Deputy Chairperson L Johnston		
Member C Smith		
Member G Upson		
Member I Wagstaff		
Member G Wishart		

The motion was declared CARRIED by 8 votes to 1.

CARRIED

8 out of 9 elected members of the Rodney local board agree that we need to protect these roads for road users.

One member expressed concerns about the land developers rights and if we start to prioritise road users and safe travel this would impact their private property rights to develop their land.

We need new houses, which means we need green field developments

but

lets stop developers putting their profits above safe travel through our beautiful region 😊

Our major roads are not for driveways and footpaths, they are for long distance driving!!!!