

# Construction Update September

Thank you for your support, we know it has been tough on the neighbourhood and the construction seems to be forever but there is an end in sight. This newsletter is to let you know:

- What work is planned for October
- Business Spotlight
- What we did in September

## October – What's Up?

### Meola Road:

- Tree planting and landscaping continues.
- Line marking and other works continue.
- Point Chevalier / Meola Road roundabout construction.
- Meola Road / Garnet Road roundabout construction.



### Pt Chevalier Road:

- Alberta Street speed table completion.
- Footpath and cycle way Southern end from Miller Street towards Great North Road.



- Stormwater works in progress Southern end.

## Local Business Spotlight Caci Clinic Pt Chevalier

“Support Local: Experience Caci Clinic's Services”

It's time for a  
*Spring cleanse*

Have a free consultation and try  
a Hydradermabrasion for only \$100!  
(usually \$135)\*

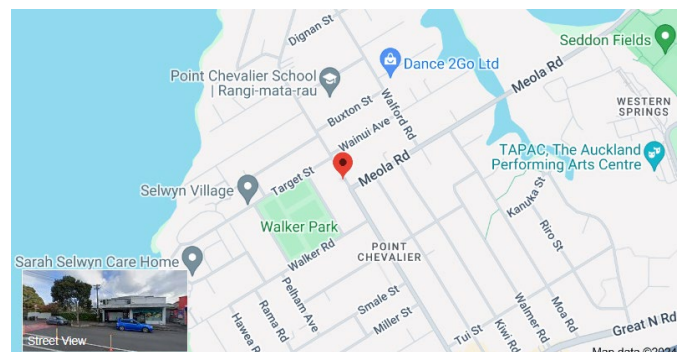
Get started: Book your free consultation.  
caci.co.nz | ptchevalier@caci.co.nz

**CACI** Caci Pt Chevalier  
222 Point Chevalier Rd

### Hours:

- Monday: 10am to 2pm
- Tuesday: 10am to 4pm
- Wednesday 10am to 7pm
- Thursday 10am to 7pm
- Friday 10am to 2pm
- Closed Saturday and Sunday

Phone: 09 849 5401



- Bus shelter and finishing works.
- Line marking and street furniture placement.
- Streetlight installation.

### Garnet Road:

- William Denny Avenue closed for continued work on the roundabout.
- Planting and street furniture placement.
- Line marking.

If you would like your business highlighted in this section, please contact [projects@at.govt.nz](mailto:projects@at.govt.nz) and we will be in touch.

## Unsafe / Illegal Parking

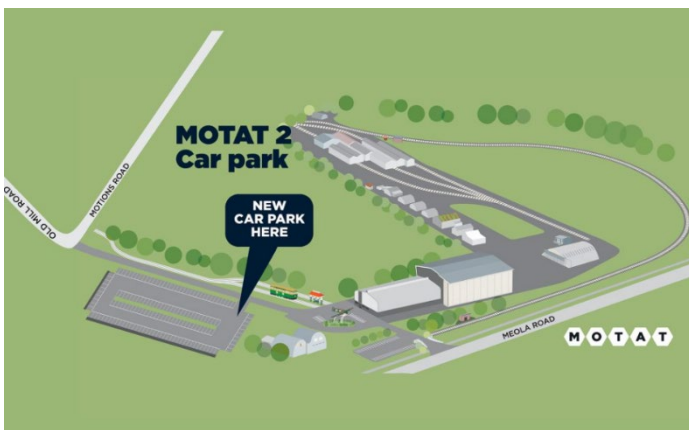
There have been a number of drivers parking on the grass berms or cycle lane on Meola Road.

This is very dangerous as they are driving over the cycle lane and footpath areas to gain access.

**Footpaths are for pedestrians – not cars!**

**Cycle lanes are for cyclists use – not cars!**

For nearby parking, please use the MOTAT car park, accessible via Motions Road.



To ensure the community can use the footpaths and cycle lanes safely our parking officers will be monitoring and enforcing illegal parking in the area.

Incorrect parking / driving examples shared by the community:



## What have we done?

September has been a very busy month on multiple sites with a number of key milestones completed:

### Meola Road:

- Tree planting and landscaping work.



### Pt Chevalier Road:



- Final Layer of asphalt from Walker Road to Miller Street.
- Footpath and cycle way-Southern end from Wakatipu Street towards Great North Road on the Eastern side of Point Chevalier.
- Asphalt cycle way Walker Road to Miller Road.
- Bus shelter and finishing works.

Please **DO NOT** park over the footpaths, cycle lanes and berm areas near Seddon Fields or Meola Dog Park.



- First concrete pour for the new Point Chevalier Road and Meola Road roundabout.

### Garnet Road:



- Completion of footpath, crossings and cycle way in the shopping center
- First concrete pour for the new Garnet Road and Meola Road roundabout.

## The Good Stuff

### Bike to Football at Seddon Fields

A very successful Bike to Football programme was run by the Bike Pt Chev community, supported by Auckland Transport and backed by Western Springs Football Club.

The idea was to support junior players, and their families keen to bike to football using the new cycle facilities.

Over the three weekends of the initiative, the Bike Pt Chev team valet-parked more than a thousand bikes. That's over 2000 car-free trips along Meola Road!

**A great success - thank you to all who supported and participated.**



# The Stages

Please see below for our high-level lookahead. Please note that timeframes are approximate and are dependent on any complications that might arise or unexpected weather events.

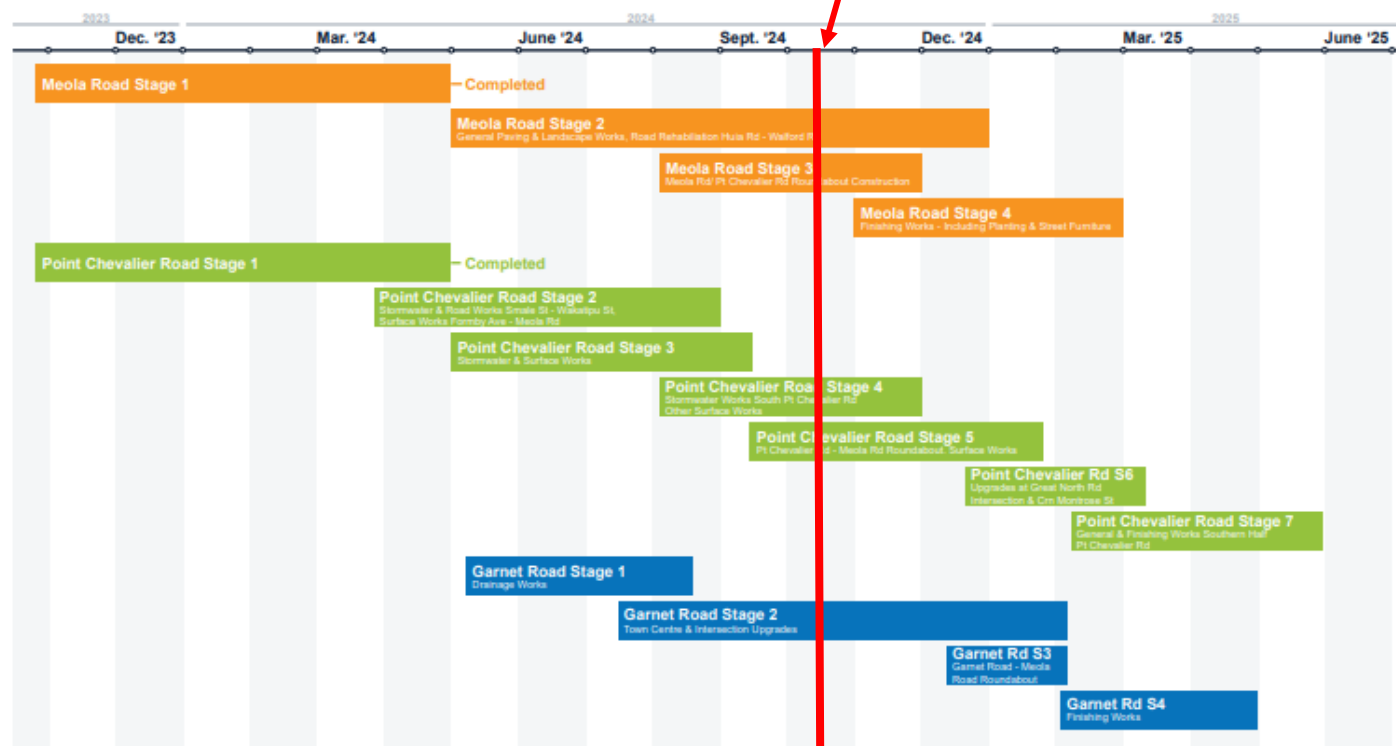
Our work programme and dates are always subject to change due to construction progress, clashes with existing unknown services (including asbestos pipes), weather and reprogramming.

All dates and information are provided as a guide only. Directly affected residents and neighbours will be notified of night work, road closures and construction impacts.

## Point Chevalier To Westmere Improvements Project Staging Overview

Project Started October 2023 | Project Completion End of June 2025

Revision Date: August 2024 | Information and dates subject to change pending weather and site conditions



### Meola Road:

- May 2024 to December 2024: Stage 2 paving, landscaping and road repairs from Huia Road to Walford Road
- August 2024 to November 2024: Stage 3 roundabout construction
- November 2024 to February 2025: Stage 4 finishing works.

### Pt Chevalier Road:

- March 2024 to August 2024: Stage 2 stormwater and roadworks from Smale Street to Wakatipu Street
- May 2024 to September 2024: Stage 3 stormwater and surface works
- August 2024 to November 2024: Stage 4 stormwater works on the southern part of Point Chevalier Road
- September 2024 to January 2025: Stage 5 Meola Road roundabout and surface works
- December 2024 to March 2025: Stage 6 upgrades at the Great North Road intersection
- February 2025 to May 2025: Stage 7 finishing works on the southern part of Point Chevalier Road.

### Garnet Road:

- May 2024 to August 2024: Stage 1 drainage works
- July 2024 to February 2025: Stage 2 town centre and intersection upgrades
- December 2024 to February 2025: Stage 3 Garnet Road to Meola Road roundabout
- February 2025 to April 2025: Stage 4 finishing works.

## What to expect throughout construction

There is a lot to do over the next 9 months and it will be disruptive at times, especially for neighbouring properties. As always, we will do our best to minimise the effects of these works on businesses, neighbours, pedestrians, cyclists and motorists.

- Active modes – Pedestrian and cycle access will be maintained.
- People should anticipate slower travel times, delays and congestion when passing through the area.
- At times, residents will have limited access to driveways and there will be no parking available on the road in work areas.
- As work progresses you will notice less disruption and less crews on site.
- **Please note** rubbish bin management by the Dempsey Wood team will be in place for properties within the full road closure area on Meola Road and Point Chevalier Road from PK Superette through to Great North Road.

### Traffic Controller

The unsung heroes that keep all road users safe during works. They direct and manage the flow of vehicles and pedestrians around temporary work sites.



Traffic Controllers are usually the first person seen on site and quite often verbally abused by road users on a daily basis which can be quite challenging for them.

They love to interact with people and help people find their way through the construction area.

- Direct traffic and ensure the safe movement of vehicles and pedestrians.
- Set up and remove traffic control equipment as needed.
- Monitor and communicate traffic patterns and potential hazards.
- They will also wave, say hello and possibly wave to try and slow you down if you are going through the worksite too fast or posing a risk to others that are using the road.

Don't be afraid to say hello to them from time to time remember the Traffic Controllers are here to keep everyone safe including our teams.

Please always respect our workers, we know it's been a long rough road with noise, detours etc but there is **No Excuse For Abuse!**

**Next Month: Sustainability**

### Support Through Construction

For general AT or project enquiries, email [projects@at.govt.nz](mailto:projects@at.govt.nz) or phone 09 930 5090.

If you have any questions or concerns about construction, please contact Dempsey Wood on 0800 782 429 or email [PtC2W@dempseywood.co.nz](mailto:PtC2W@dempseywood.co.nz).

Visit AT's website to learn more about the [project](#).

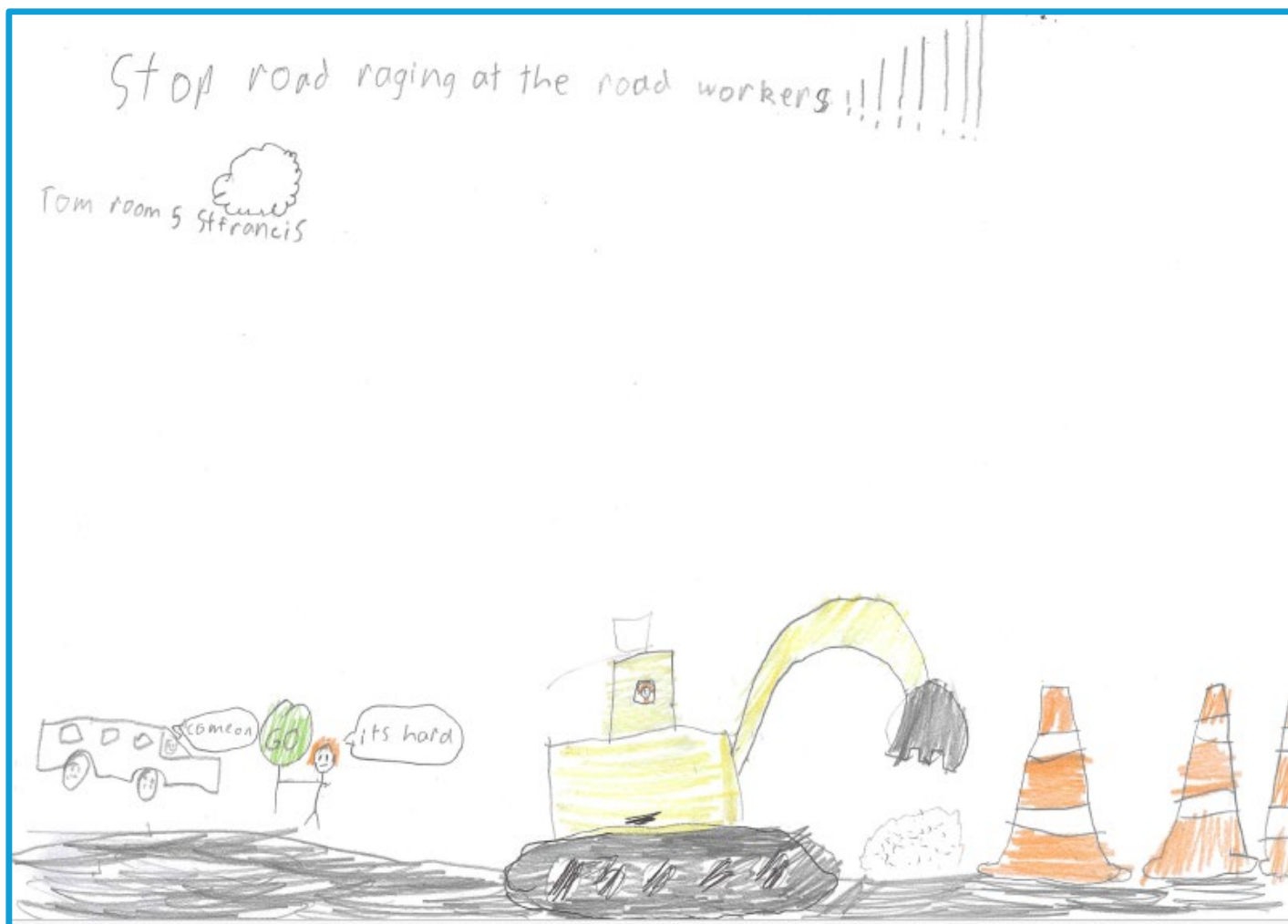


### Potholes!!

Auckland Transport maintenance contractors have an existing pro-active roving programme checking the network for potholes and other repairs required.

However, if you notice a pothole or other issue that needs fixing, please call 09 3553553 or log via the Report a problem link <https://at.govt.nz/about-us/contact-us>.

## Awesome Artwork from Tom, Room 5 St Francis School



If you have received this update from a friend and would like to receive it directly to your mailbox each month, please email [projects@at.govt.nz](mailto:projects@at.govt.nz) to sign up.

We thank you for your continued patience and support – it has been and is appreciated by our team.

Ngā mihi,

**The Pt Chevalier to Westmere Improvements Project Team**