

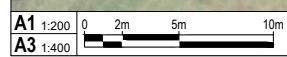
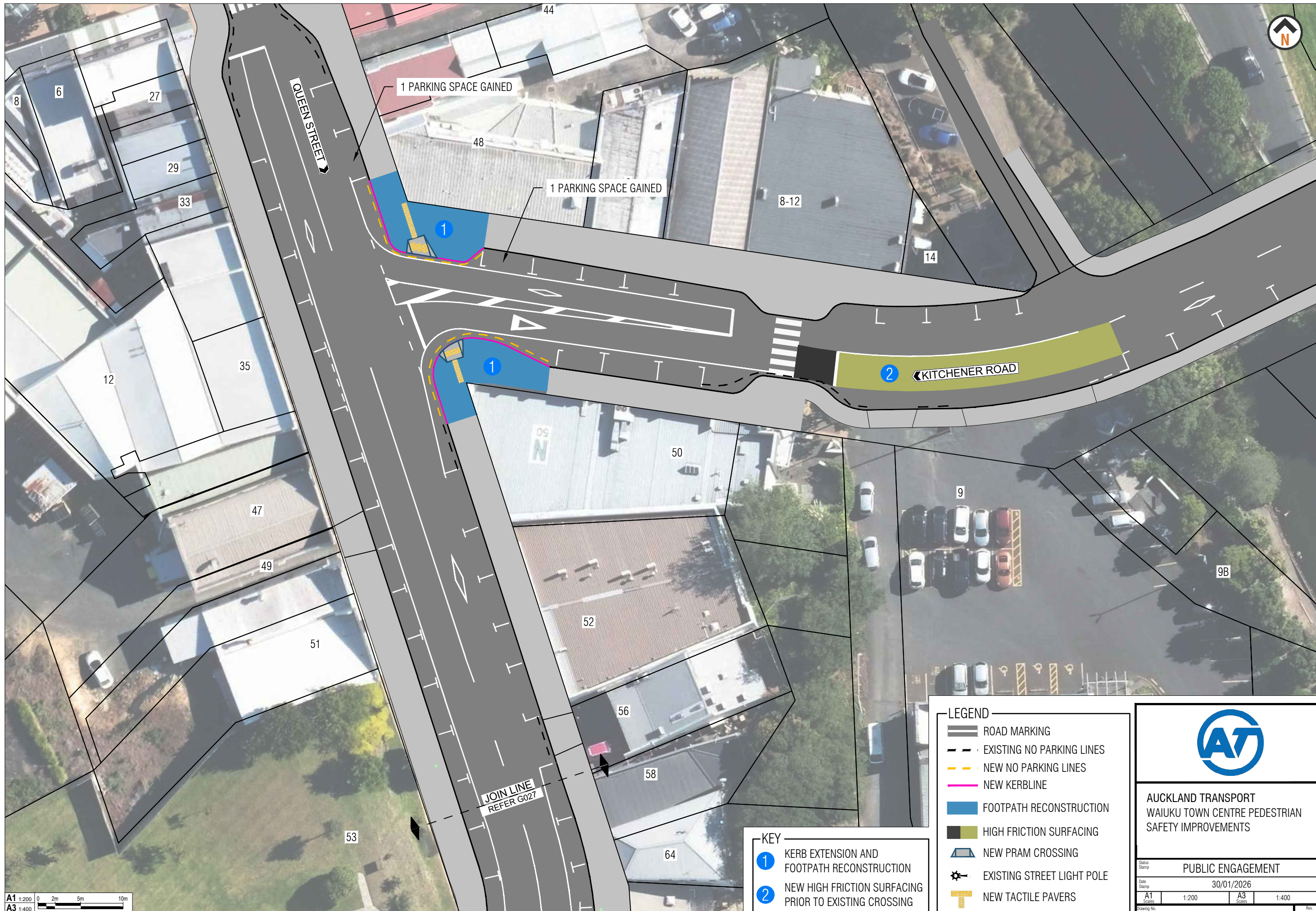
ORIGINAL SIZE A1 0 10 20 30 40 50 60 70 80 90 100 150 200mm DO NOT SCALE - IF IN DOUBT, ASK



AUCKLAND TRANSPORT
WAIUKU TOWN CENTRE PEDESTRIAN
SAFETY IMPROVEMENTS
OVERALL LAYOUT


Status Stamp	PUBLIC ENGAGEMENT	
Date Stamp	30/01/2026	
A1 Scale	A3 Scale	
Drawing No.	2025-AT-26-02_G025	Rev. A

ORIGINAL SIZE A1
20mm
DO NOT SCALE - IF IN DOUBT, ASK



- KEY**
- 1 KERB EXTENSION AND FOOTPATH RECONSTRUCTION
 - 2 NEW HIGH FRICTION SURFACING PRIOR TO EXISTING CROSSING

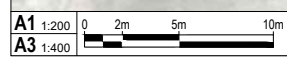
- LEGEND**
- ROAD MARKING
 - EXISTING NO PARKING LINES
 - NEW NO PARKING LINES
 - NEW KERBLINE
 - FOOTPATH RECONSTRUCTION
 - HIGH FRICTION SURFACING
 - NEW PRAM CROSSING
 - EXISTING STREET LIGHT POLE
 - NEW TACTILE PAVERS



AUCKLAND TRANSPORT
WAIUKU TOWN CENTRE PEDESTRIAN
SAFETY IMPROVEMENTS

Status Stamp	PUBLIC ENGAGEMENT			
Date Stamp	30/01/2026			
A1 Scale	1:200	A3 Scale	1:400	
Drawing No.	2025-AT-26-02_G026		Rev	A

ORIGINAL SIZE A1 DO NOT SCALE - IF IN DOUBT, ASK



- KEY**
- 1 KERB EXTENSION AND FOOTPATH RECONSTRUCTION
 - 2 NEW PEDESTRIAN CROSSING POINT

- LEGEND**
- ROAD MARKING
 - EXISTING NO PARKING LINES
 - NEW NO PARKING LINES
 - NEW KERBLINE
 - FOOTPATH RECONSTRUCTION
 - NEW TRAFFIC ISLAND
 - NEW PRAM CROSSING
 - NEW TACTILE PAVERS



AUCKLAND TRANSPORT
WAIUKU TOWN CENTRE PEDESTRIAN
SAFETY IMPROVEMENTS

Status Stamp PUBLIC ENGAGEMENT

Date Stamp 30/01/2026

A1 Scale 1:200 A3 Scale 1:400

Drawing No. 2025-AT-26-02_G027 Rev. A